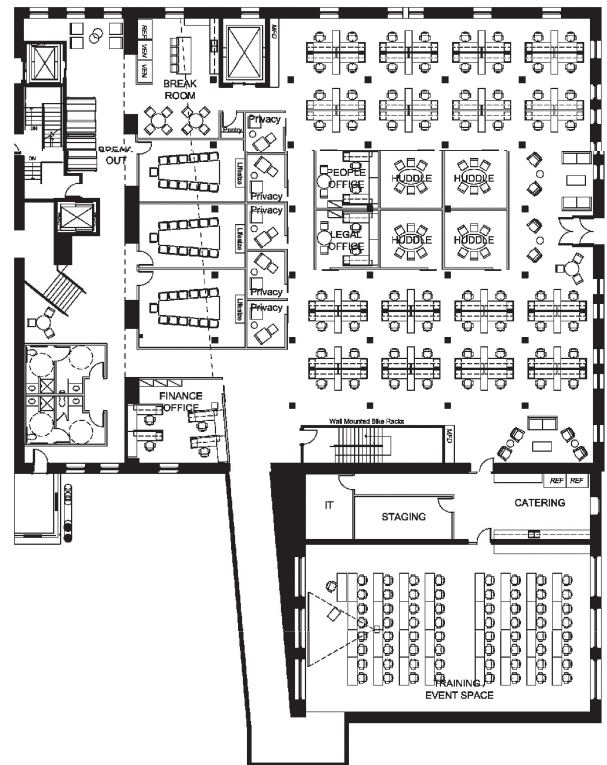


MERCANTILE SQUARE

1550 WYNKOOP STREET, DENVER, CO 80202

28,317 SF Available

1-2 Floor Brick & Timber Suite Across from Union Station



1st Floor | **12,066 SF**

- WIDE OPEN BRICK AND TIMBER SUITE WITH PRIVATE RESTROOMS
- GROUND FLOOR UNION STATION CONNECTIVITY

2nd Floor | **16,251 SF**

Available January 1, 2027 | Fully Furnished

- 12 PRIVATE OFFICES
- 4 CONFERENCE ROOMS
- BREAK ROOM
- PRIVATE RESTROOMS
- 5 PHONE ROOMS
- CATERING KITCHEN
- TRAINING/ EVENT SPACE
- OPEN AREA
- RECEPTION

CONTACT

Sarajane Goodfellow

+1 303 628 7414

sarajane.goodfellow@cbre.com



Former Tattered Cover Bookstore
Grand Staircase



*Revive the connectivity
that once was!*

