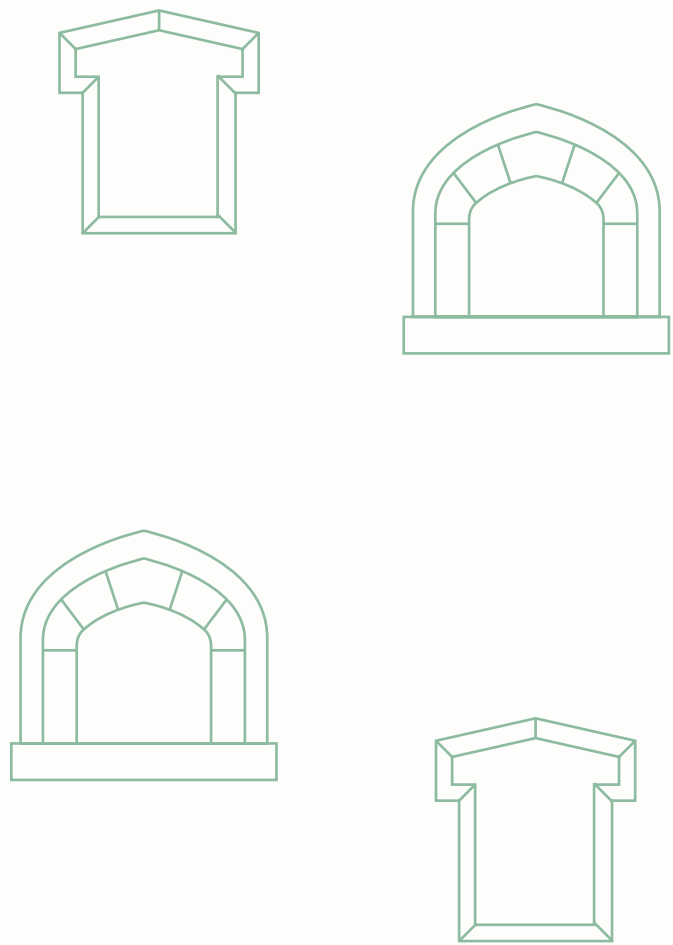




# pacific place

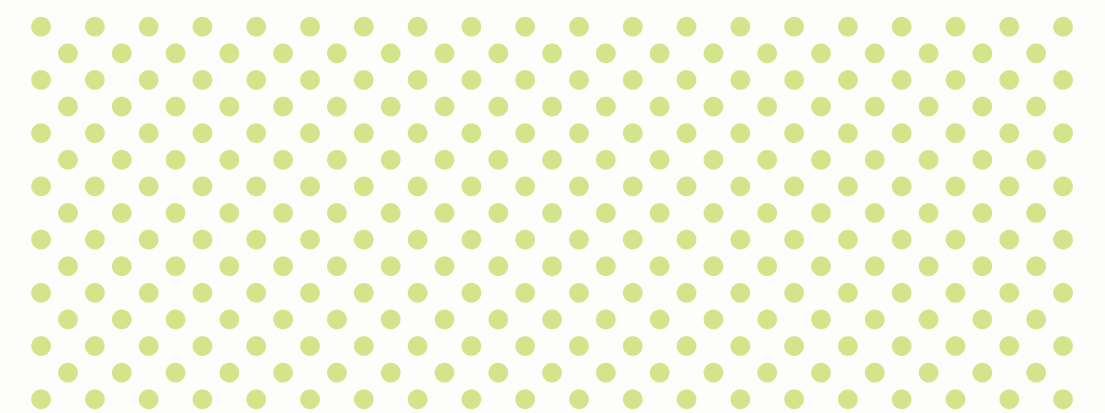
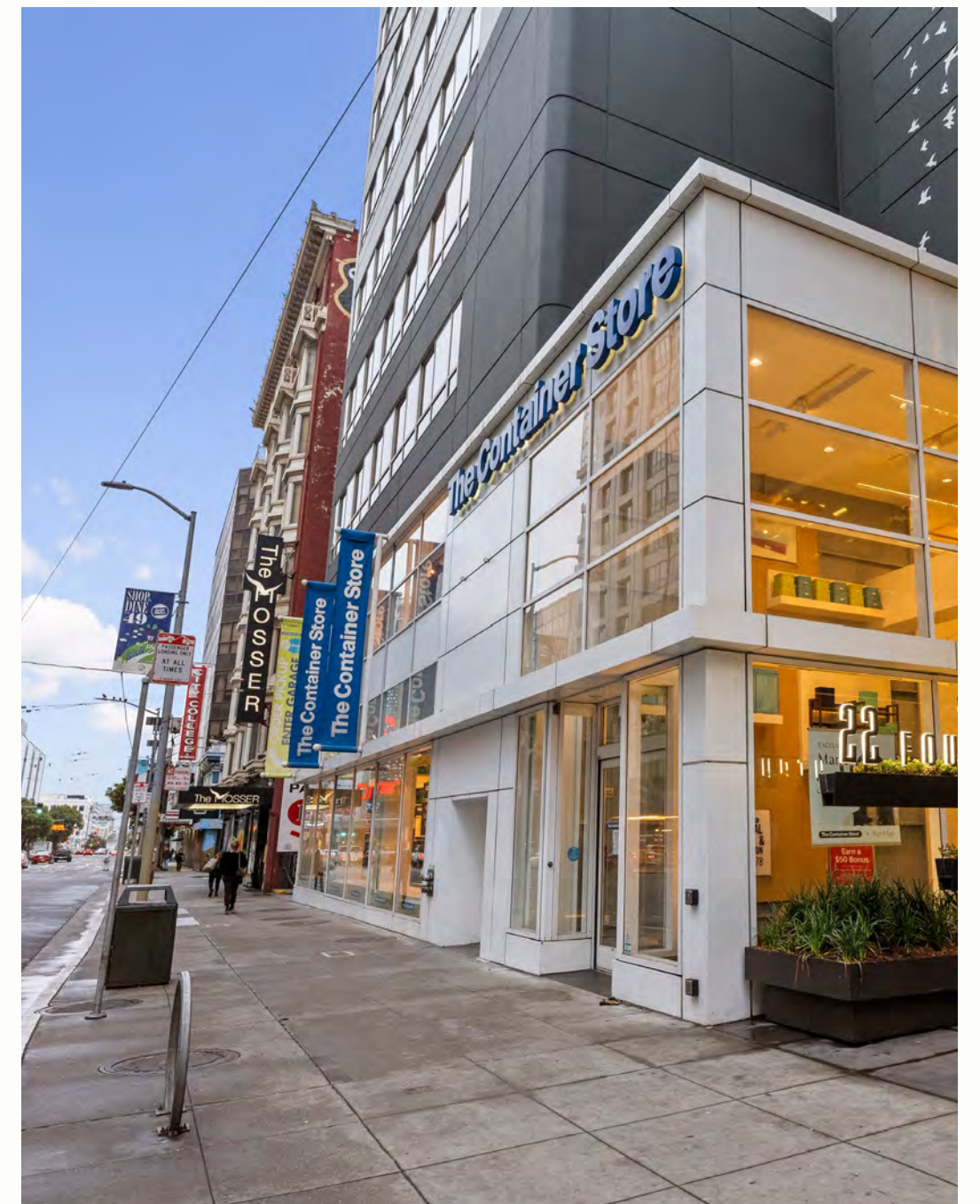
801 MARKET STREET,  
SAN FRANCISCO,  
CALIFORNIA 94103



# Market with an Edge

## It's about choice.

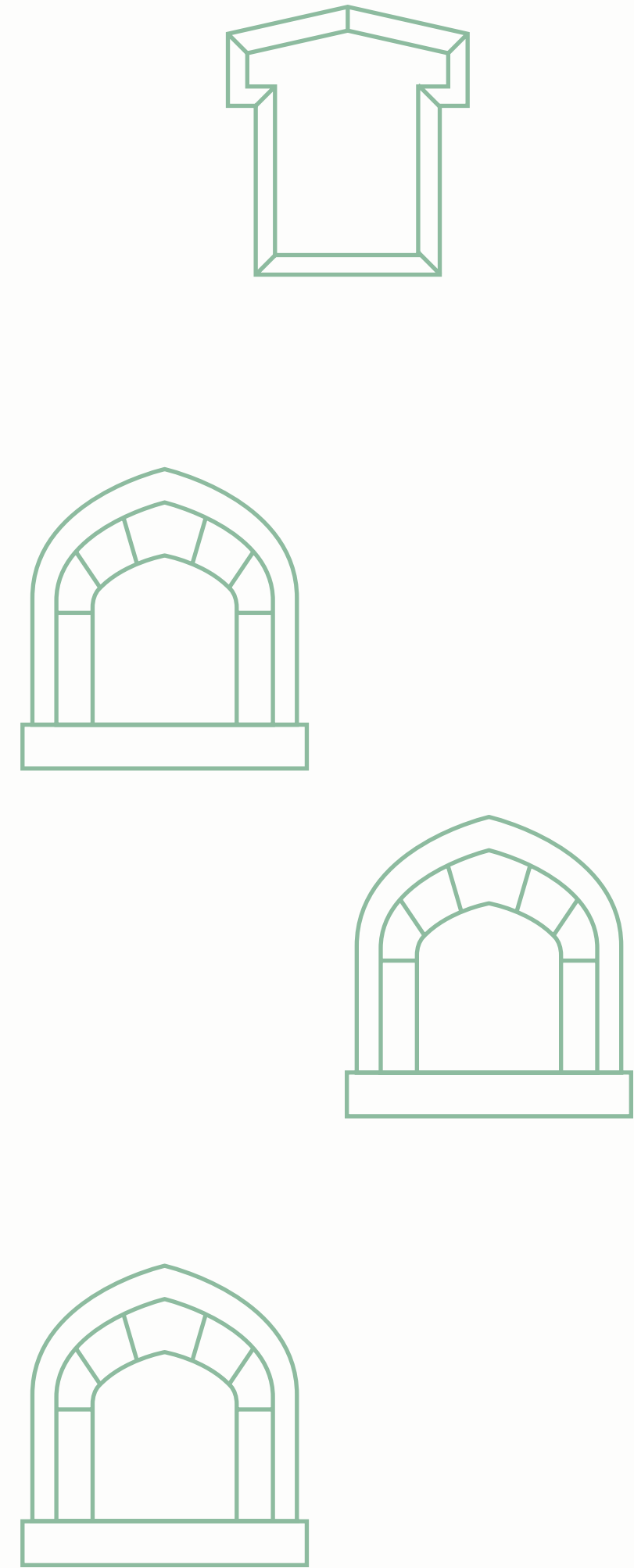
At the gateway to Market Street and just **blocks away from Union Square and the 1,500-room Marriott Marquis**, Pacific Place is the ideal retail hub – **well served by transit**, adjacent to established **casual fashion, food and grocery**. Pacific Place gives you more room to create, design and enhance your retail offerings, giving you scale and flexibility like no other.





# Stepping Out

Proximity to Powell, Market and Union Square and the cluster of retail options there offers more than brick and mortar. **It's about possibilities.**



# The Outlook Is Brighter Than Ever

With almost 4 million visitors to Union Square in 2025, Pacific Place provides visibility, access and eyeline to what people want.

Already well-served by transportation, the property now benefits from the new Central Subway line which provides convenient access to the nearby 4th and Brannan Station, enhancing connectivity for residents and businesses in the Chinatown and South of Market neighborhoods.

PRE-COVID

26.2  
million

VISITORS  
(2019)

\$10.2  
billion

IN SPENDING

2025

23.7  
million

VISITORS

\$9.4  
billion

IN SPENDING

FUTURE FORECAST

24.2  
million

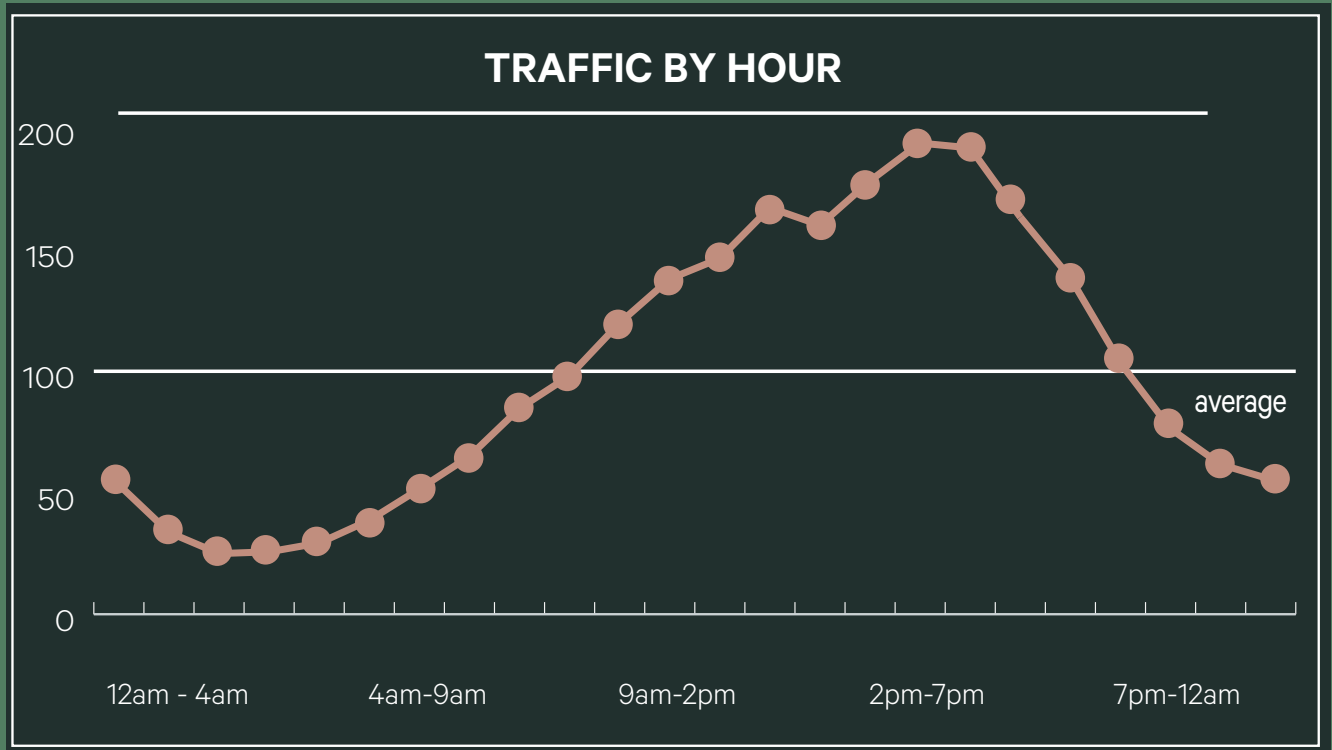
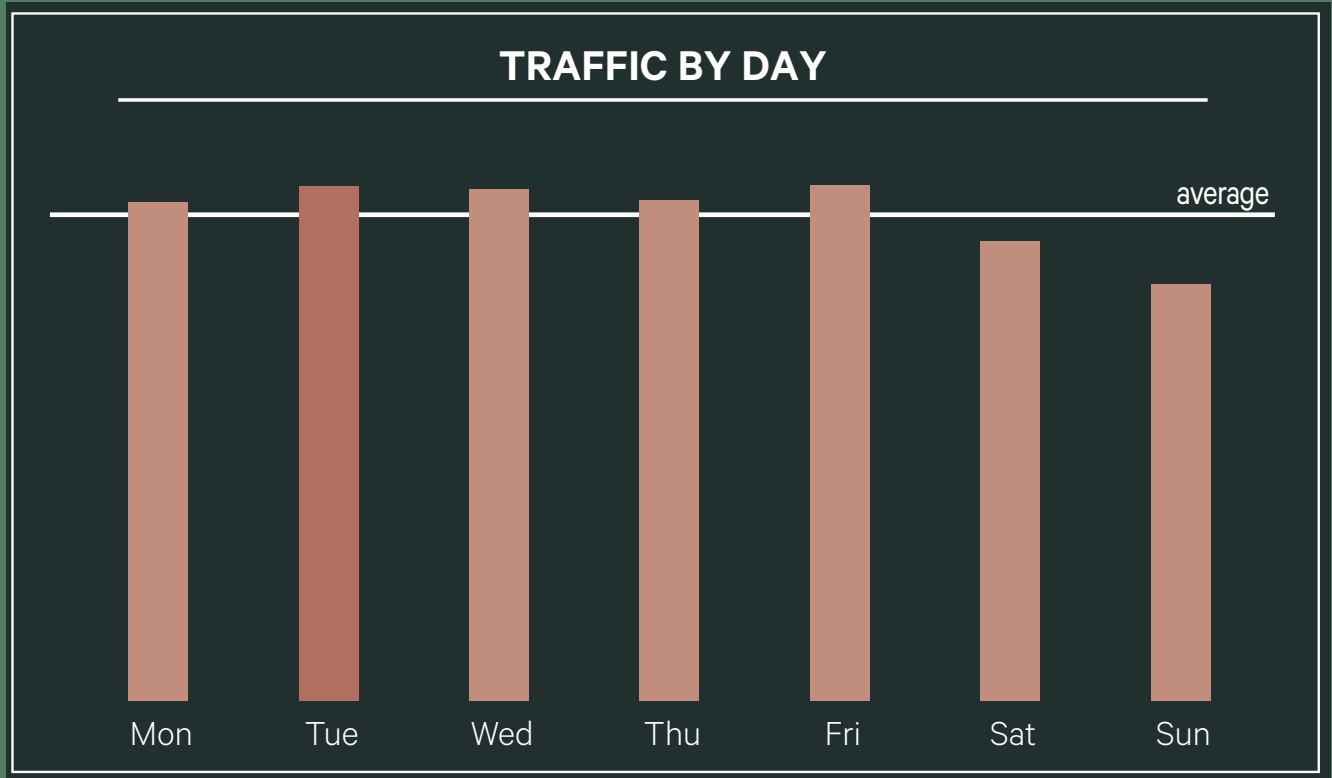
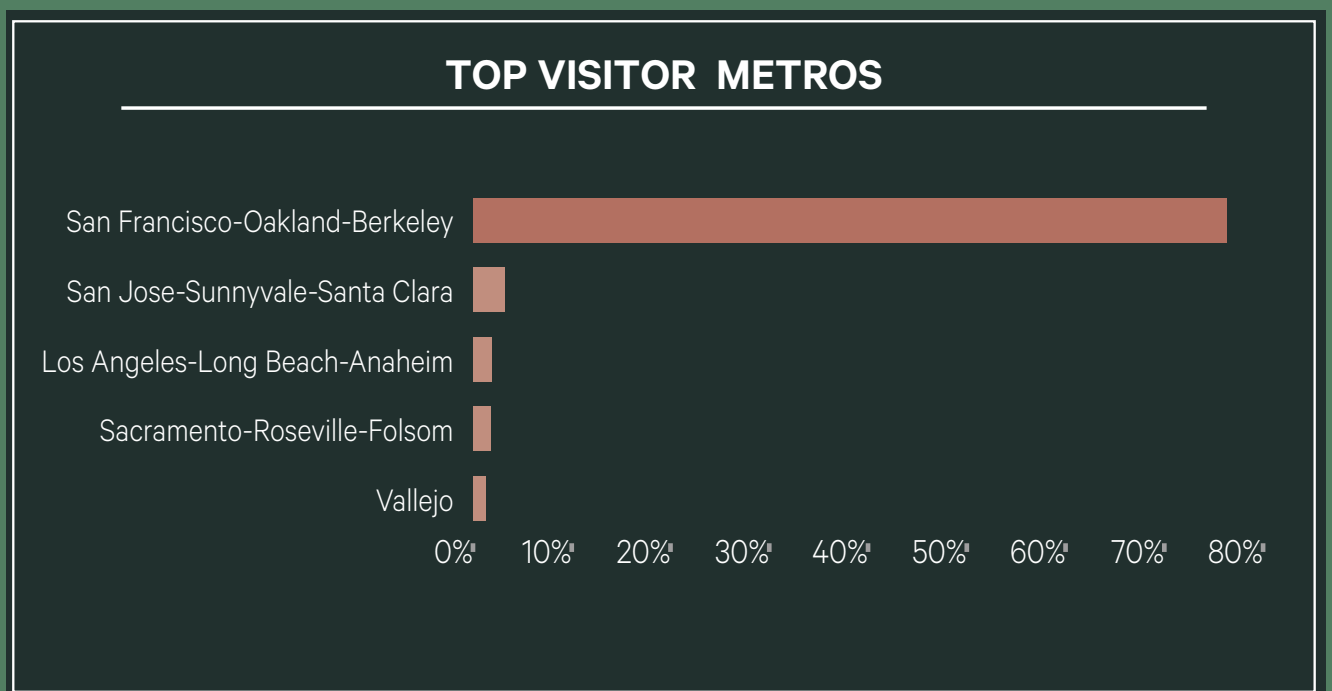
VISITORS  
(PROJECTED 2026)

\$9.9  
billion

IN SPENDING  
(PROJECTED 2026)



# Market Demographics



San Francisco hosted an estimated **23.7 million visitors** in 2025



Visitors to SF spent an estimated **\$9.4 billion** in 2025



San Francisco International Airport (SFO) served over **54.5 million passengers** in 2025, up 4.3% from 2024



**Over 34,000 hotel rooms** in San Francisco with a 67.2% occupancy rate and a projected 69% rate for 2026



In 2025, almost 56% of the **\$333 billion venture capital funding nationally** came into the Bay Area, which drives huge spending power locally

.25 Miles

.5 Miles



**7,419**  
hotel rooms

**10,899**  
hotel rooms

HOTEL



**1,000+**  
theatre seats

**9,100+**  
theatre seats

ENTERTAINMENT



**4.8M<sub>SF</sub>**  
of office space

**27.2M<sub>SF</sub>**  
of office space

OFFICE



**23,760**  
employees

**92,382**  
employees

DAYTIME POPULATION

Beyond Boundaries

# The City Advantage



Level 1: 10,213 RSF

Total RSF: 20,564

Restrooms: Two separate restrooms located on the second floor 2 stalls/1 urinal and 3 stalls

Venting: TBC

Frontage: 64'-8" on Market Street

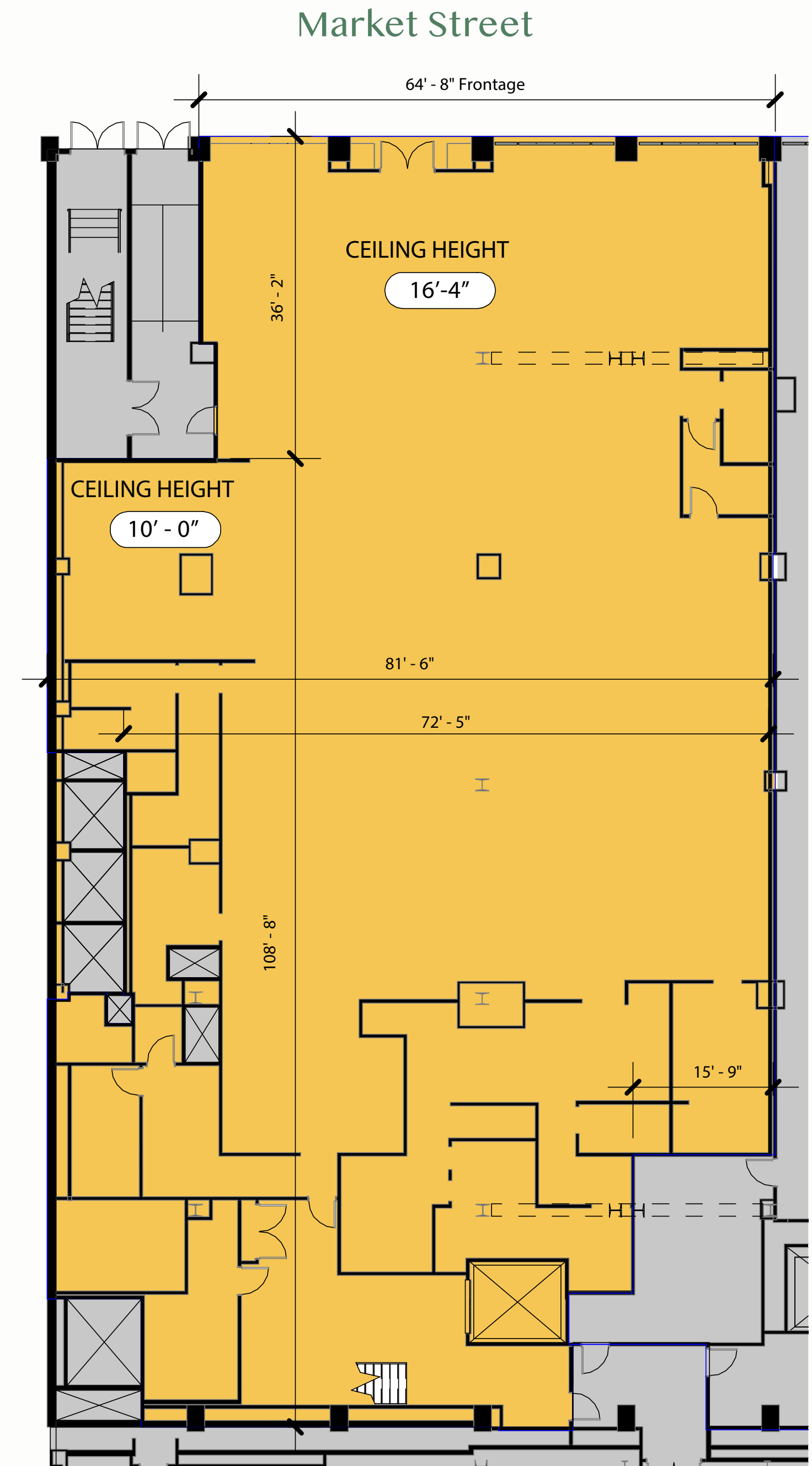
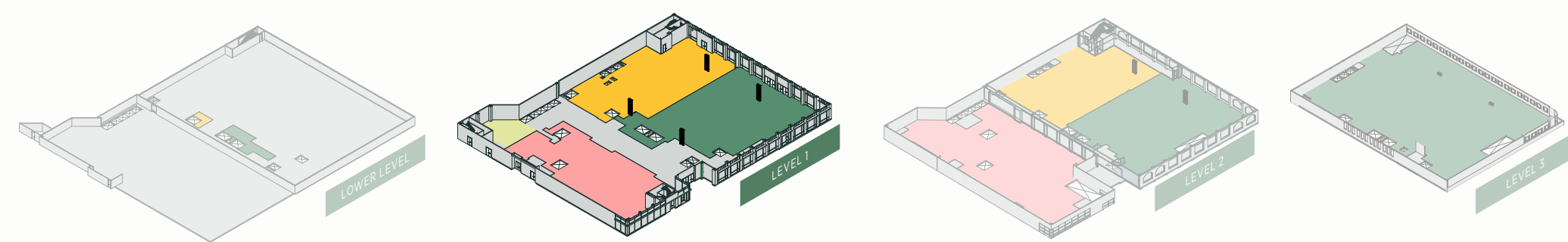
Ceiling heights:

**Ground Floor** - 10'-0" / EXPOSED @ 16'-4"

**Second Floor** - EXPOSED @ 14'-4"

High visibility Market Street location

Steps from Powell Street BART station



Beyond Boundaries

# The City Advantage



Level 2: 10,042 RSF

Total RSF: 20,564

Restrooms: Two separate restrooms located on the second floor 2 stalls/1 urinal and 3 stalls

Venting: TBC

Frontage: 64'-8" on Market Street

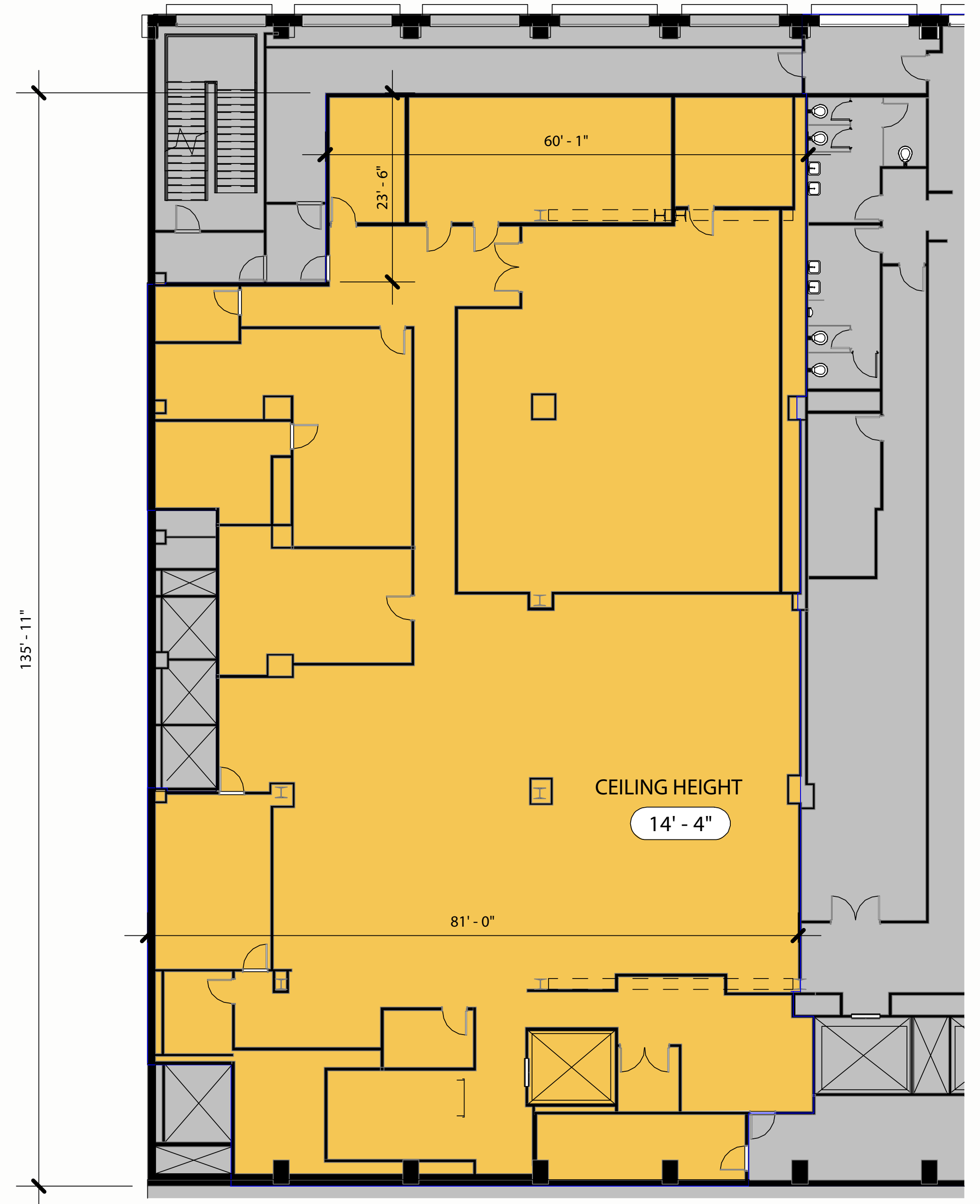
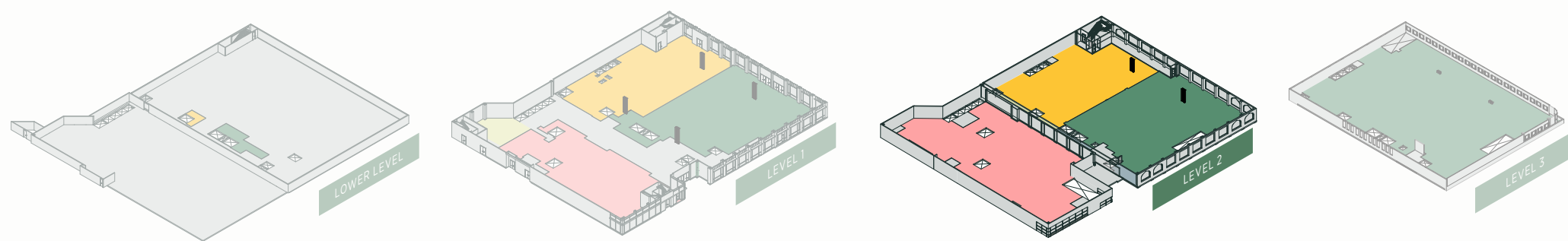
Ceiling heights:

**Ground Floor** - 10'-0" / EXPOSED @ 16'-4"

**Second Floor** - EXPOSED @ 14'-4"

High visibility Market Street location

Steps from Powell Street BART station



# Beyond Boundaries

# The City Advantage



Lower Level: 309 RSF

Total RSF: 20,564

Restrooms: Two separate restrooms located on the second floor 2 stalls/1 urinal and 3 stalls

Venting: TBC

Frontage: 64'-8" on Market Street

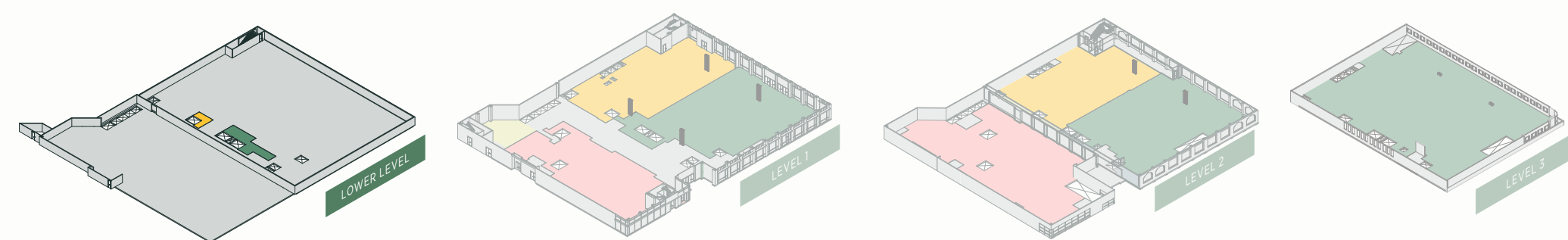
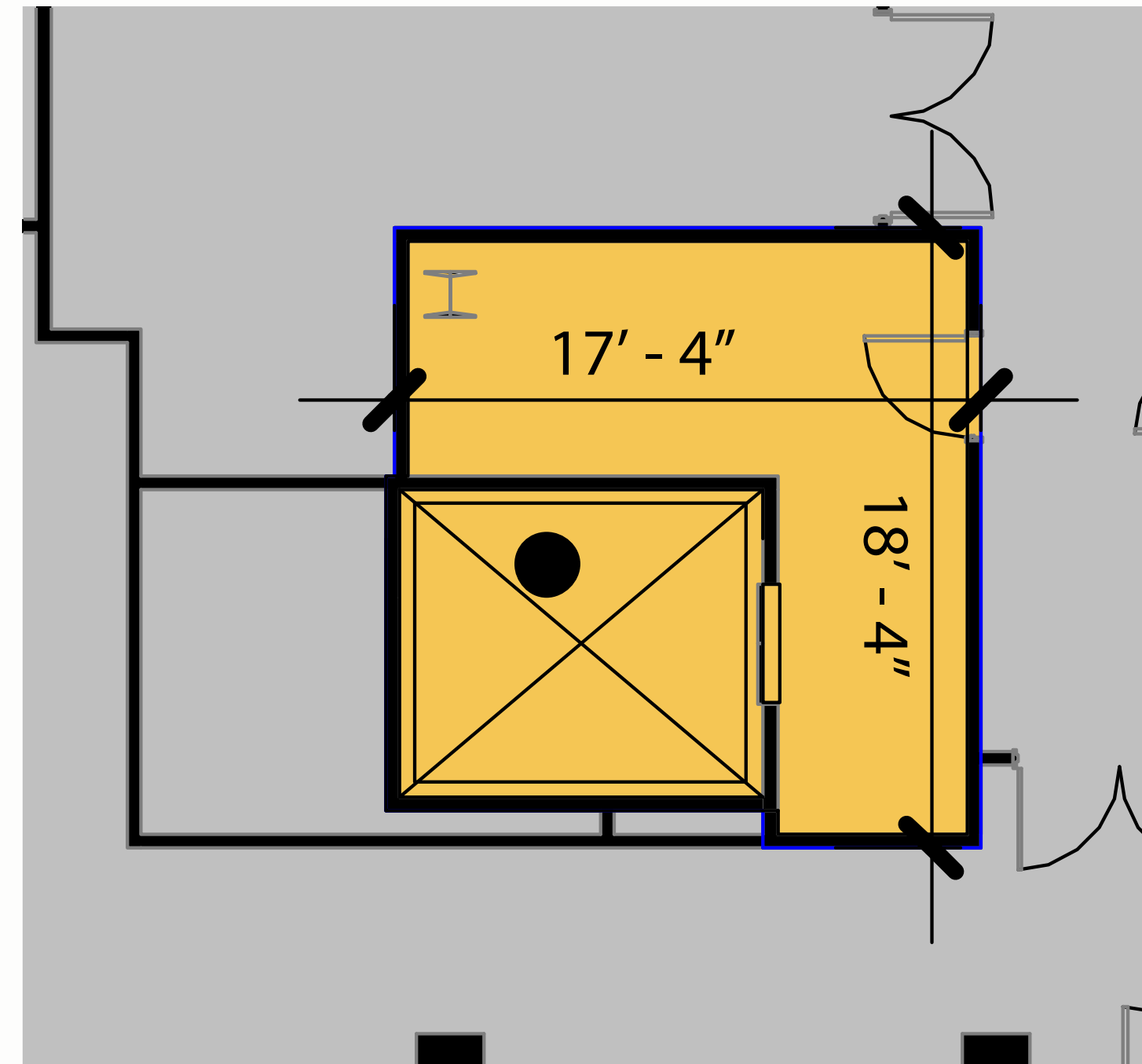
Ceiling heights:

**Ground Floor** - 10'-0" / EXPOSED @ 16'-4"

**Second Floor** - EXPOSED @ 14'-4"

High visibility Market Street location

Steps from Powell Street BART station



Beyond Boundaries

# The City Advantage

801 Market Street | Level 1: 13,496 RSF

Total RSF: 56,838

Restrooms: Two separate restrooms located on the second level (2 stalls/1 urinal and 3 stalls)

Venting: TBC

Frontage: 113'-3" on Market Street / 65' on 4th Street

Ceiling heights:

**Level 1** - EXPOSED @ 16'-4"

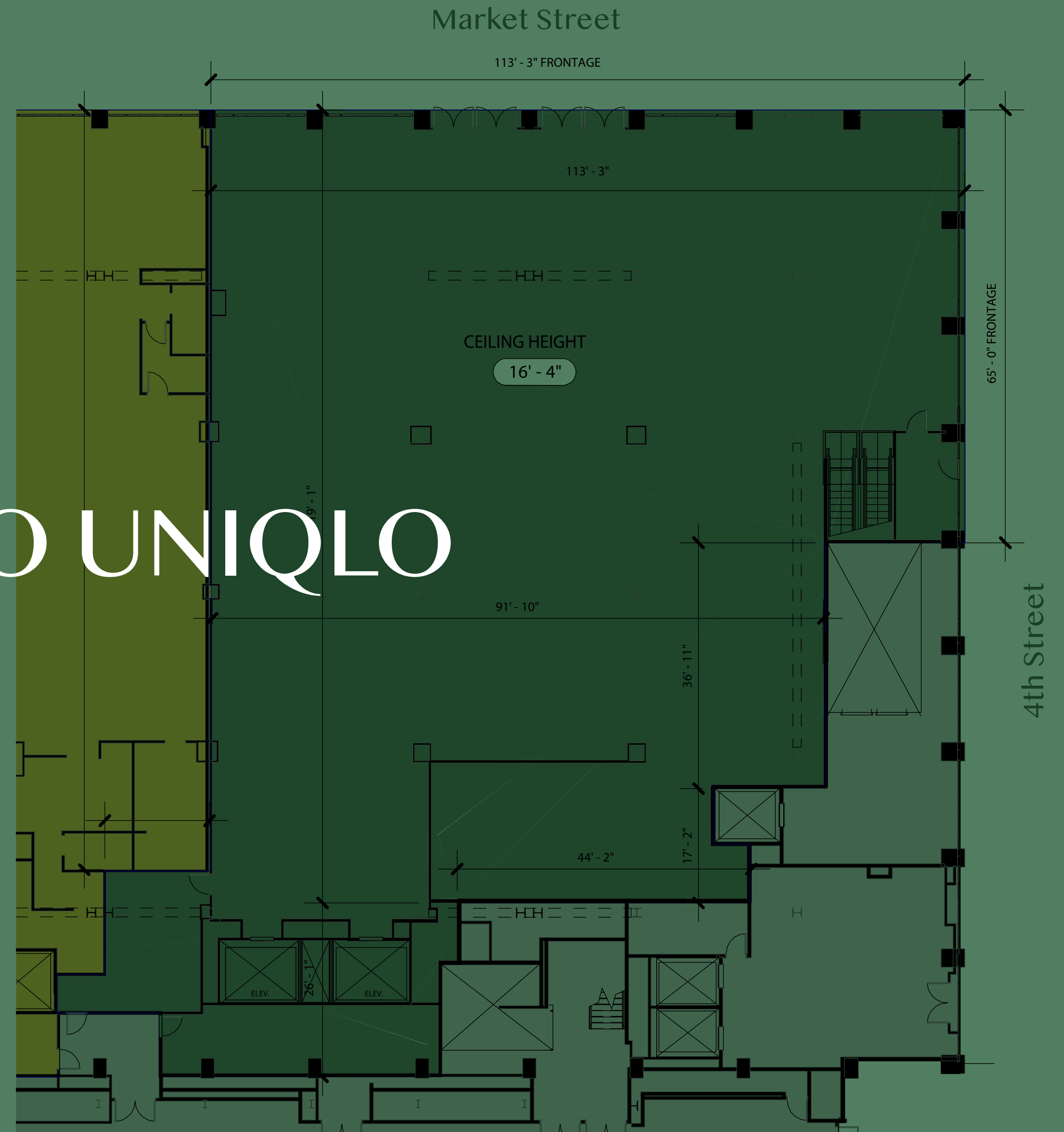
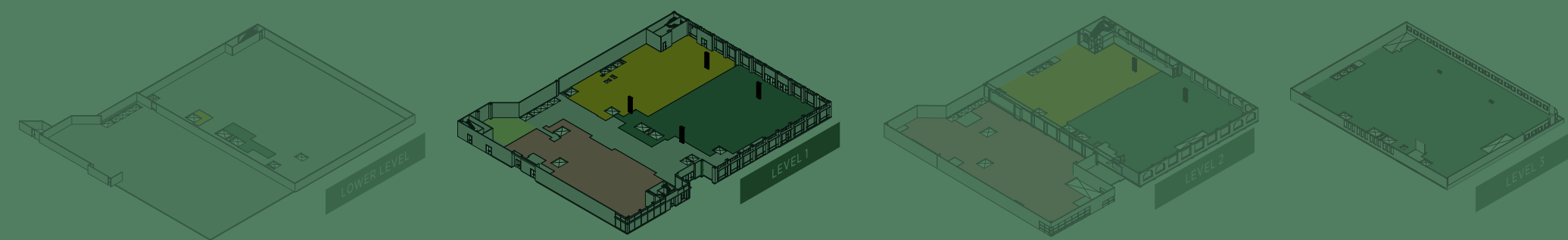
**Level 2** - EXPOSED @ 14'-2"

**Level 3** - EXPOSED @ 20'-2"

High visibility Market Street corner location

Steps from Powell Street BART station

# LEASED TO UNIQLO



Beyond Boundaries

# The City Advantage

801 Market Street | Level 2: 15,854 RSF

Total RSF: 56,838

Restrooms: Two separate restrooms located on the second level (2 stalls/1 urinal and 3 stalls)

Venting: TBC

Frontage: 113'-3" on Market Street / 65' on 4th Street

Ceiling heights:

**Level 1** - EXPOSED @ 16'-4"

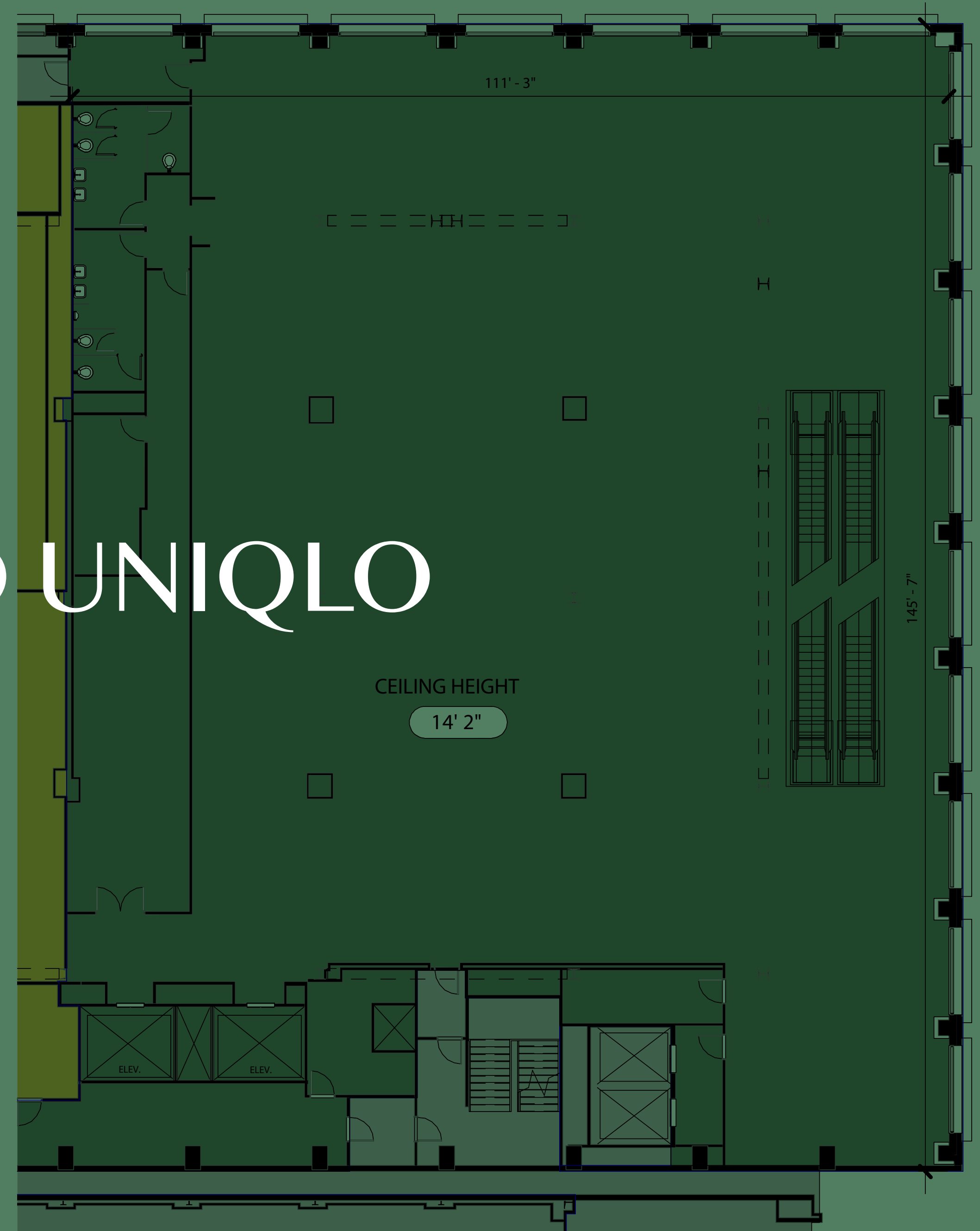
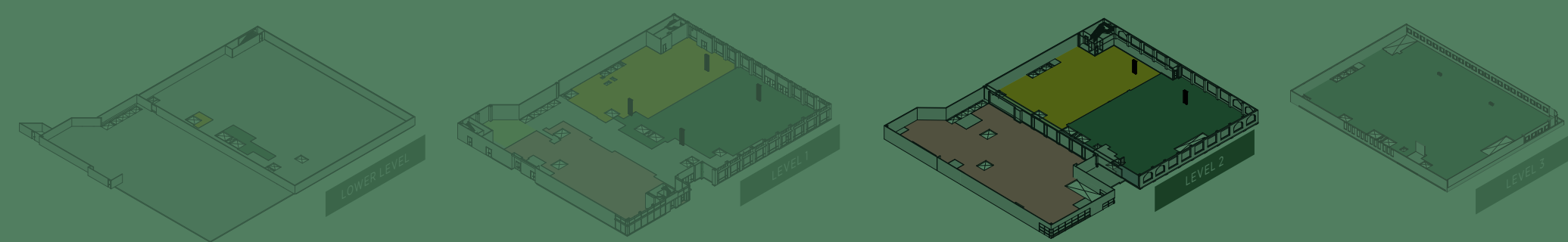
**Level 2** - EXPOSED @ 14'-2"

**Level 3** - EXPOSED @ 20'-2"

High visibility Market Street corner location

Steps from Powell Street BART station

# LEASED TO UNIQLO



Beyond Boundaries

# The City Advantage

801 Market Street | Lower Level: 1,040 RSF

Total RSF: 56,838

Restrooms: Two separate restrooms located on the second level (2 stalls/1 urinal and 3 stalls)

Venting: TBC

Frontage: 113'-3" on Market Street / 65' on 4th Street

Ceiling heights:

**Level 1** - EXPOSED @ 16'-4"

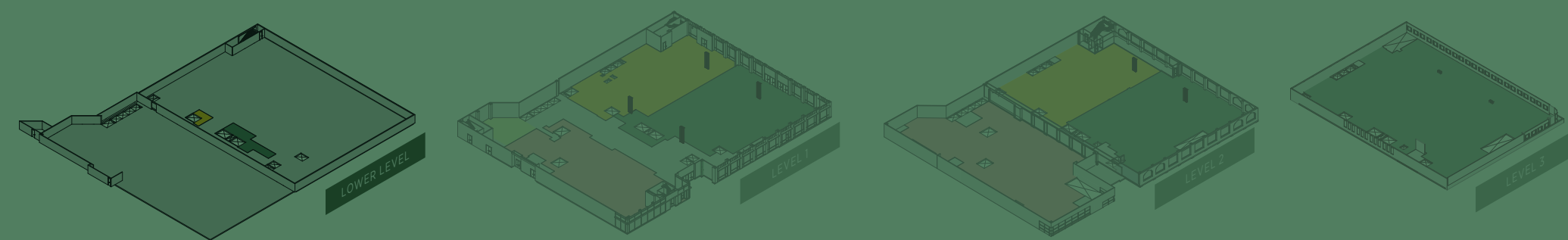
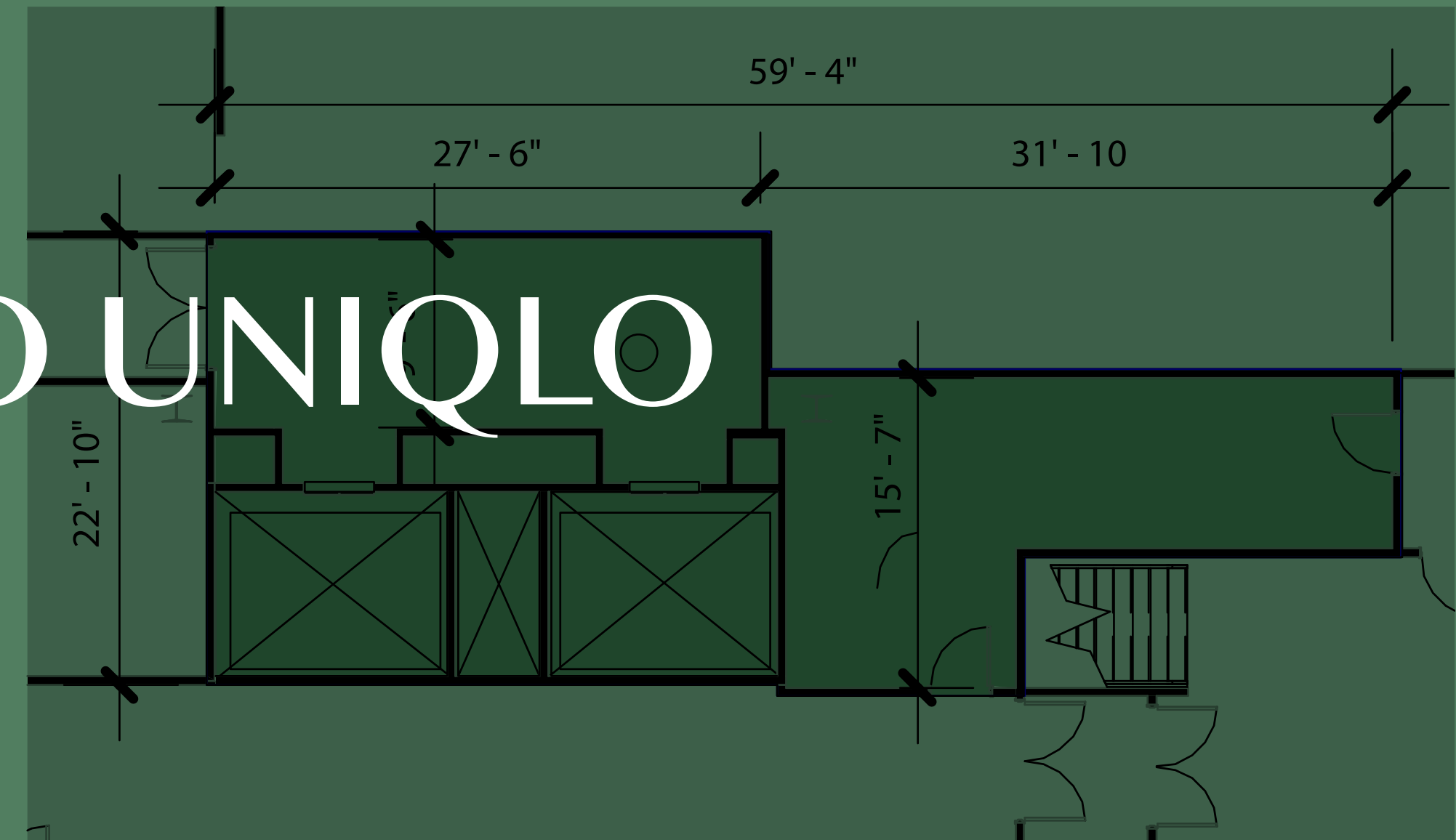
**Level 2** - EXPOSED @ 14'-2"

**Level 3** - EXPOSED @ 20'-2"

High visibility Market Street corner location

Steps from Powell Street BART station

# LEASED TO UNIQLO



Beyond Boundaries

# The City Advantage

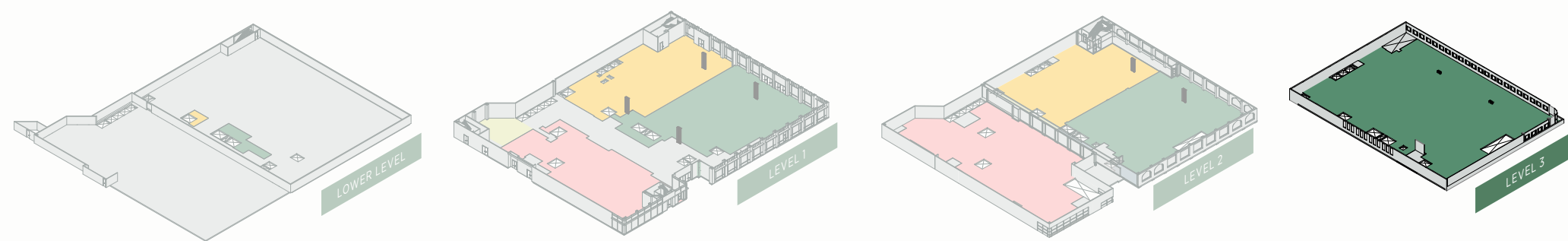
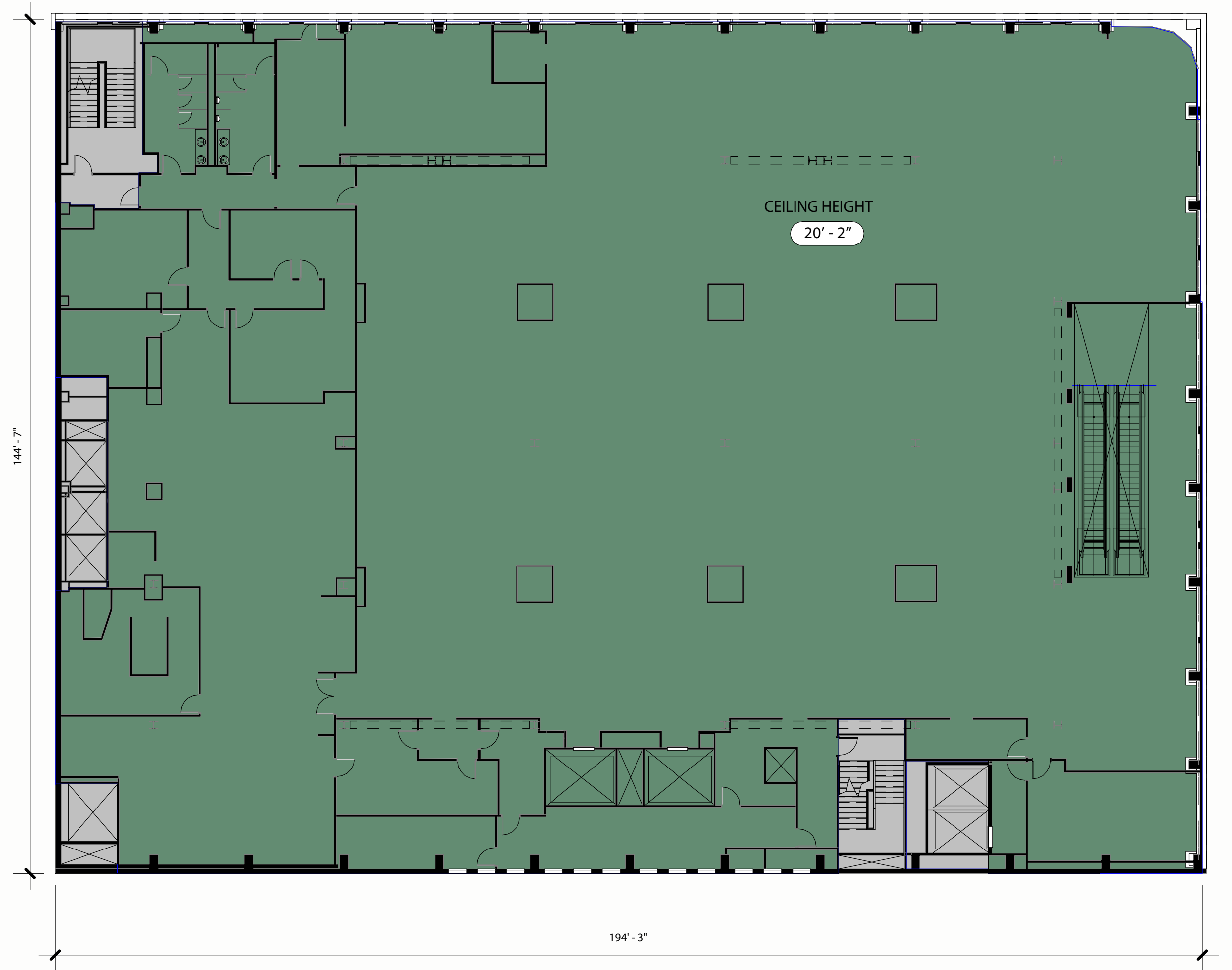
801 Market Street | Level 3: 26,448 RSF

Total RSF: 26,448 RSF

Upper floor retail space with access through common area.

No frontage.

Signage opportunity on Market Street



# Beyond Boundaries

# The City Advantage

Level 1: 12,518 RSF

Total RSF: 30,266

Restrooms: Two separate restrooms located on the second level

Venting: TBC

Frontage: 78' on 4th Street

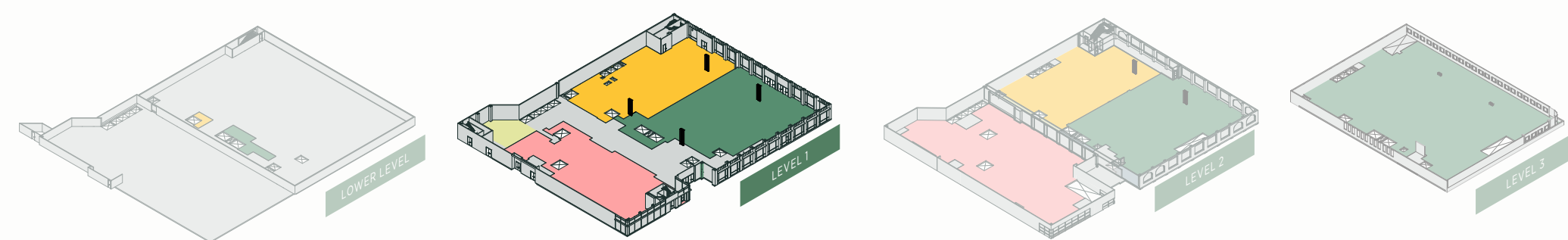
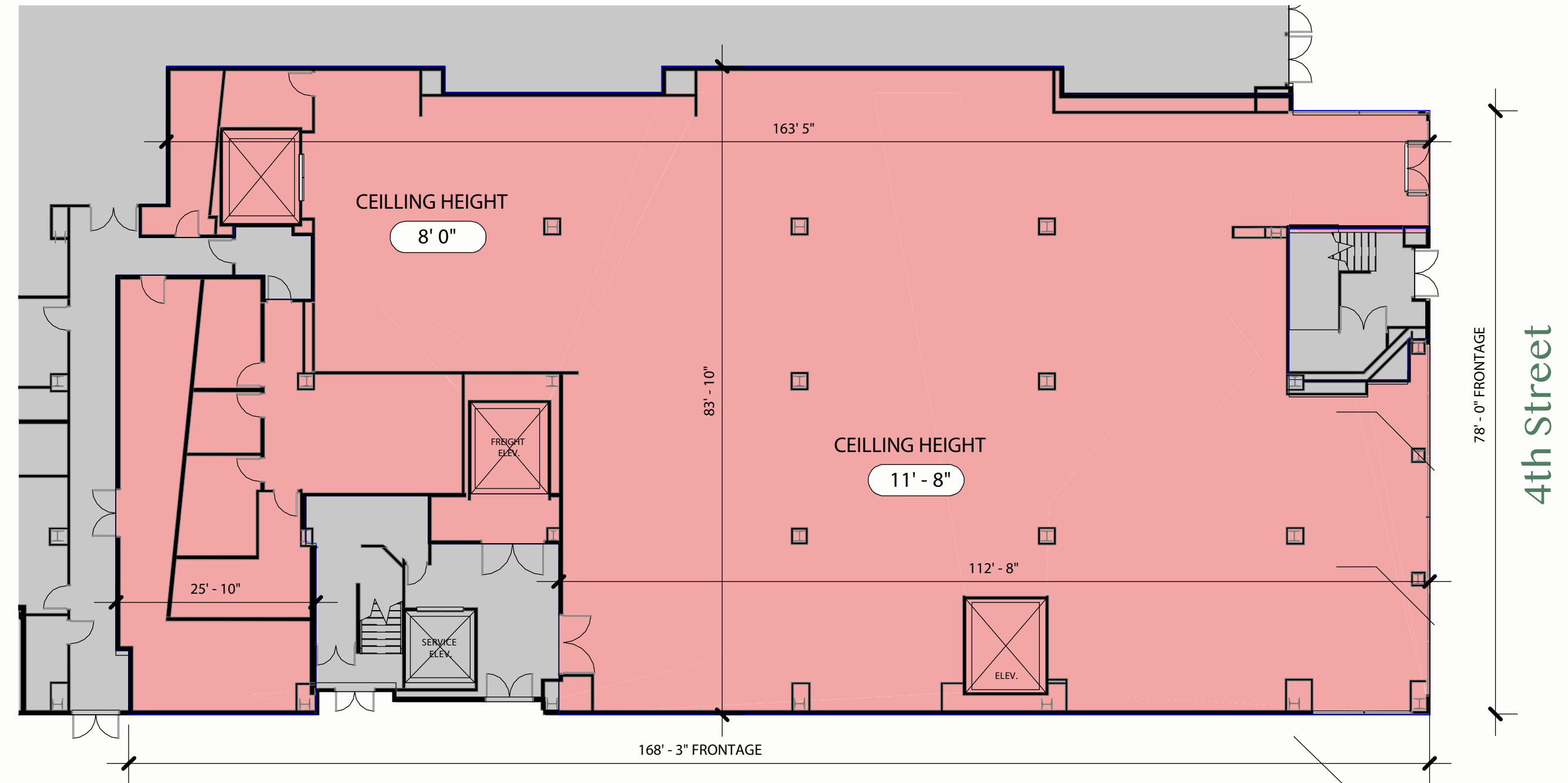
Ceiling heights:

**Level 1** - 12'-0" / EXPOSED @ 15'-4"

**Level 2** - 8'-0" / EXPOSED @ 11'-8"

Next to the largest Trader Joe's in San Francisco

Steps from Powell Street BART station







+1 415 772 0306

## Alex Sagues

Lic. 02055525  
alex.sagues@cbre.com

## Madeline Redmond

Lic. 02186119  
madeline.redmond@cbre.com



© 2026 CBRE, Inc. All rights reserved. This information has been obtained from sources believed reliable but has not been verified for accuracy or completeness. You should conduct a careful, independent investigation of the property and verify all information. Any reliance on this information is solely at your own risk. CBRE and the CBRE logo are service marks of CBRE, Inc. All other marks displayed on this document are the property of their respective owners, and the use of such logos does not imply any affiliation with or endorsement of CBRE.