

±1,474 SF OFFICE SPACE AVAILABLE

2205

PLAZA DRIVE

ROCKLIN, CA 95765

CBRE



PROPERTY DETAILS

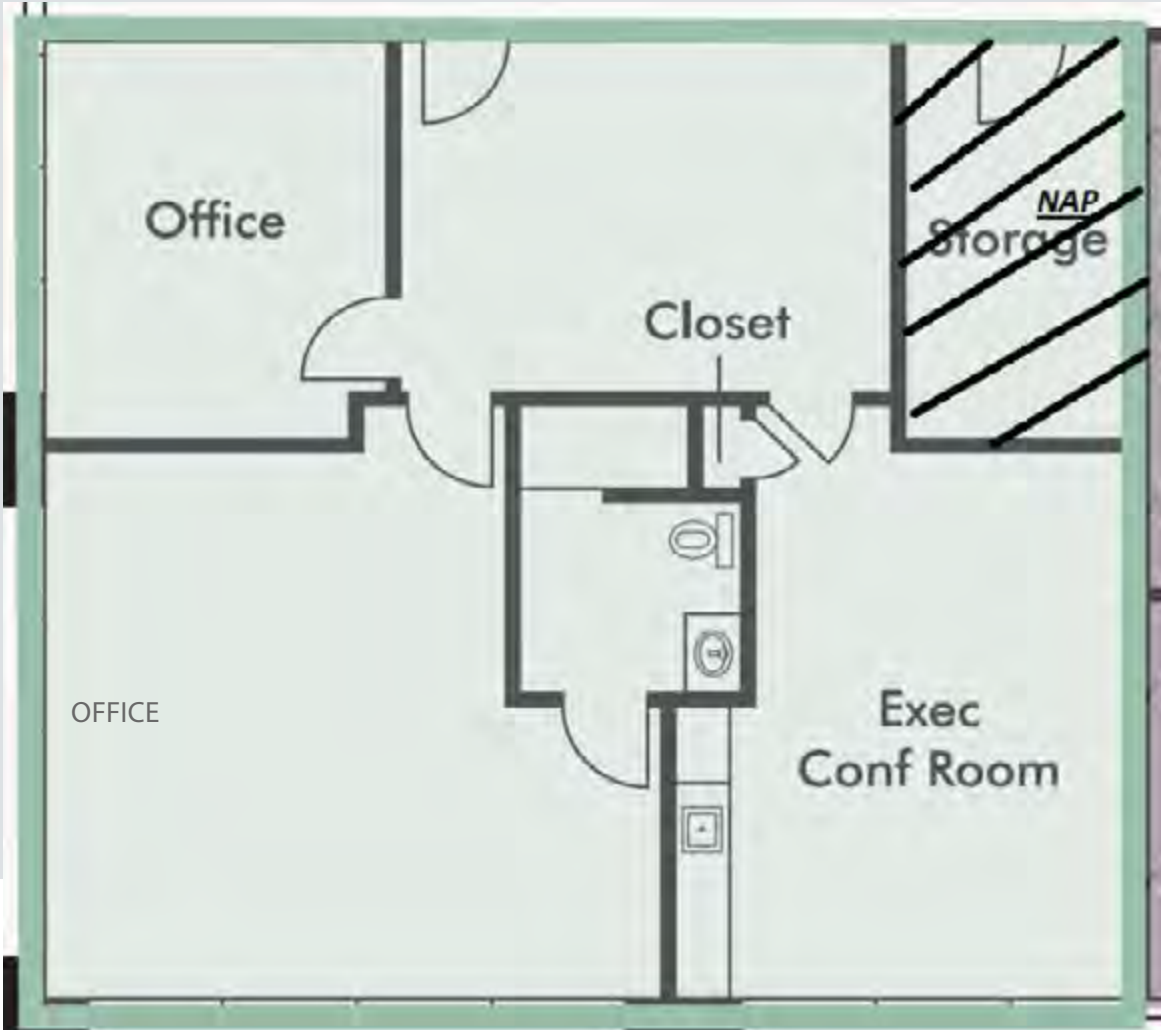
SUITE 275 | ±1,474 SF

- ⇒ **Lease Rate:** \$2.00 PSF/Per Month
- ⇒ **Lease Type:** Full Service Gross
- ⇒ ±21,470 SF Office Building
- ⇒ Two Stories
- ⇒ Built in 2007
- ⇒ Located in the Stanford Ranch Office Plaza
- ⇒ Walking distance to The Plaza at Stanford Ranch
- ⇒ Near amenities like Starbucks, The Human Bean, Catrina's Cantina, Chipotle, Taco Bell, Bel Air, and much more

2205 PLAZA DRIVE, ROCKLIN, CA 95765

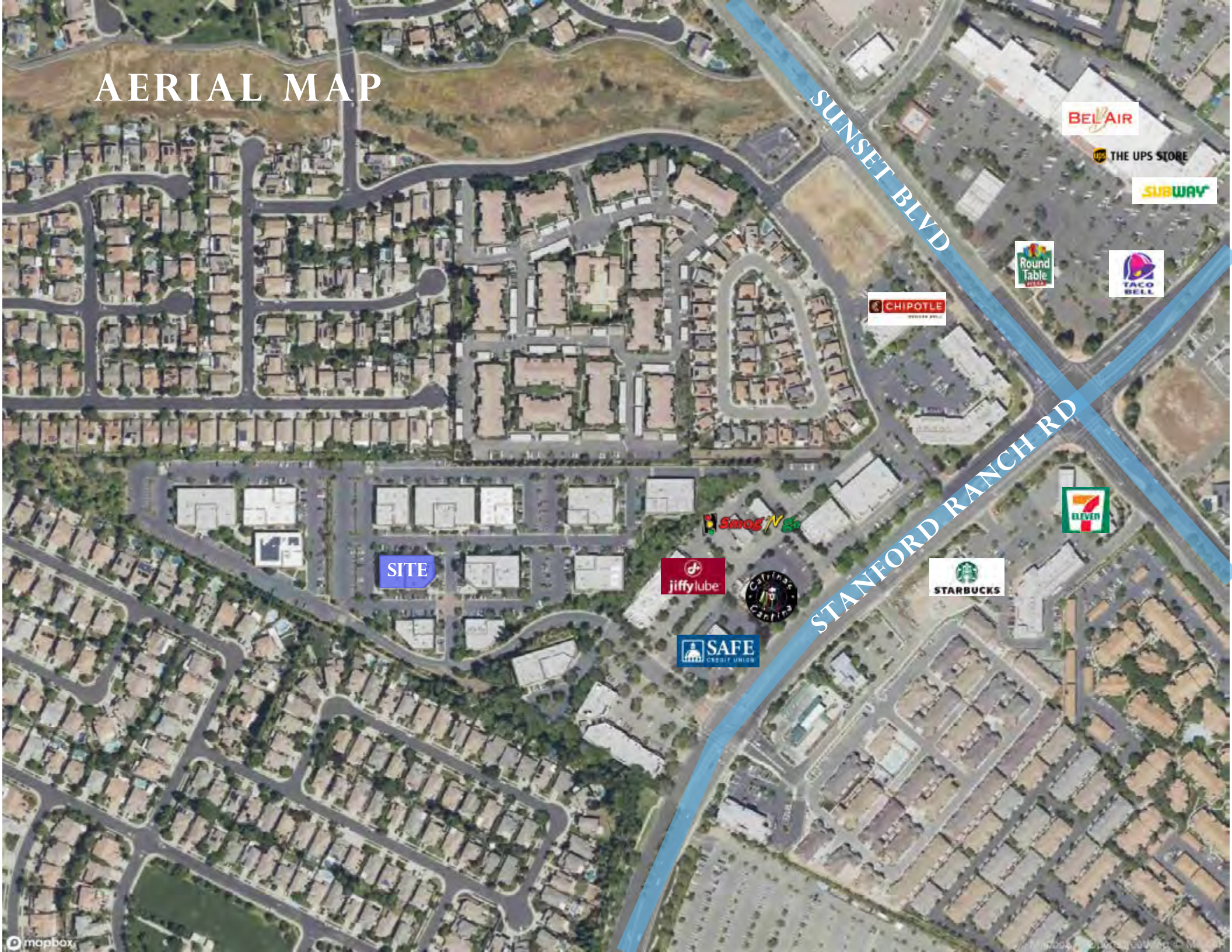
FLOOR PLAN

SUITE 275 | ±1,474 SF



NOT TO SCALE. ALL DIMENSIONS ARE APPROXIMATE.

AERIAL MAP



SUNSET BLVD

STANFORD RANCH RD

SITE

BEL AIR

THE UPS STORE

SUBWAY

Round Table PIZZA

TACO BELL

CHIPOTLE

7-ELEVEN

STARBUCKS

SMOG V Go

jiffylube

SAFE CREDIT UNION



2205 Plaza Drive, Rocklin, CA
95765

PROPERTY
PHOTOS



2205 PLAZA DRIVE

ROCKLIN, CA 95765

KEVIN LARSCHIED
Executive Vice President
+1 916 781 4818
kevin.larscheid@cbre.com
Lic. 00816790

SCOTT RUSH
First Vice President
+1 916 781 4802
scott.rush@cbre.com
Lic. 01228497

PHILLIP LARSCHIED
Sales Associate
+1 916 781 4848
phillip.larscheid@cbre.com
Lic. 02434984



© 2026 CBRE, Inc. All rights reserved. This information has been obtained from sources believed reliable but has not been verified for accuracy or completeness. CBRE, Inc. makes no guarantee, representation or warranty and accepts no responsibility or liability as to the accuracy, completeness, or reliability of the information contained herein. You should conduct a careful, independent investigation of the property and verify all information. Any reliance on this information is solely at your own risk. CBRE and the CBRE logo are service marks of CBRE, Inc. All other marks displayed on this document are the property of their respective owners, and the use of such marks does not imply any affiliation with or endorsement of CBRE. Photos herein are the property of their respective owners. Use of these images without the express written consent of the owner is prohibited.