

GATEWAY OAKS

II

FOR LEASE

2151 River Plaza Drive | Sacramento, CA

 **VIDEO
TOUR**

MODERN CLASS A WORKPLACE SUPPORTING CULTURE, COLLABORATION, AND WELLNESS

TONY WHITTAKER
+1 916 492 6914
TONY.WHITTAKER@CBRE.COM
LIC. 01780828

JASON GOFF
+1 916 446 8222
JASON.GOFF@CBRE.COM
LIC. 01205230

NELLIE CRUZ
+1 916 492 6915
NELLIE.CRUZ@CBRE.COM
LIC. 02086140

HAYDEN NABERS
+1 916 446 8207
HAYDEN.NABERS@CBRE.COM
LIC. 02231233






 **BASIN STREET
PROPERTIES** EST. 1974

CBRE

BUILDING PARK VISUAL OVERVIEW



PROPERTY AMENITIES

-  ON-SITE PROPERTY MANAGEMENT & ENGINEER
-  FITNESS CENTER WITH SHOWERS
-  CONFERENCE FACILITIES IN GATEWAY I & IV
-  TENANT LOUNGE IN GATEWAY I & IV
-  BIKE RACKS
-  EV CHARGING STATIONS

IN ADDITION TO THE PROPERTY AMENITIES, BELOW ARE THE SERVICES AND EXPERIENCES OFFERED TO TENANTS:

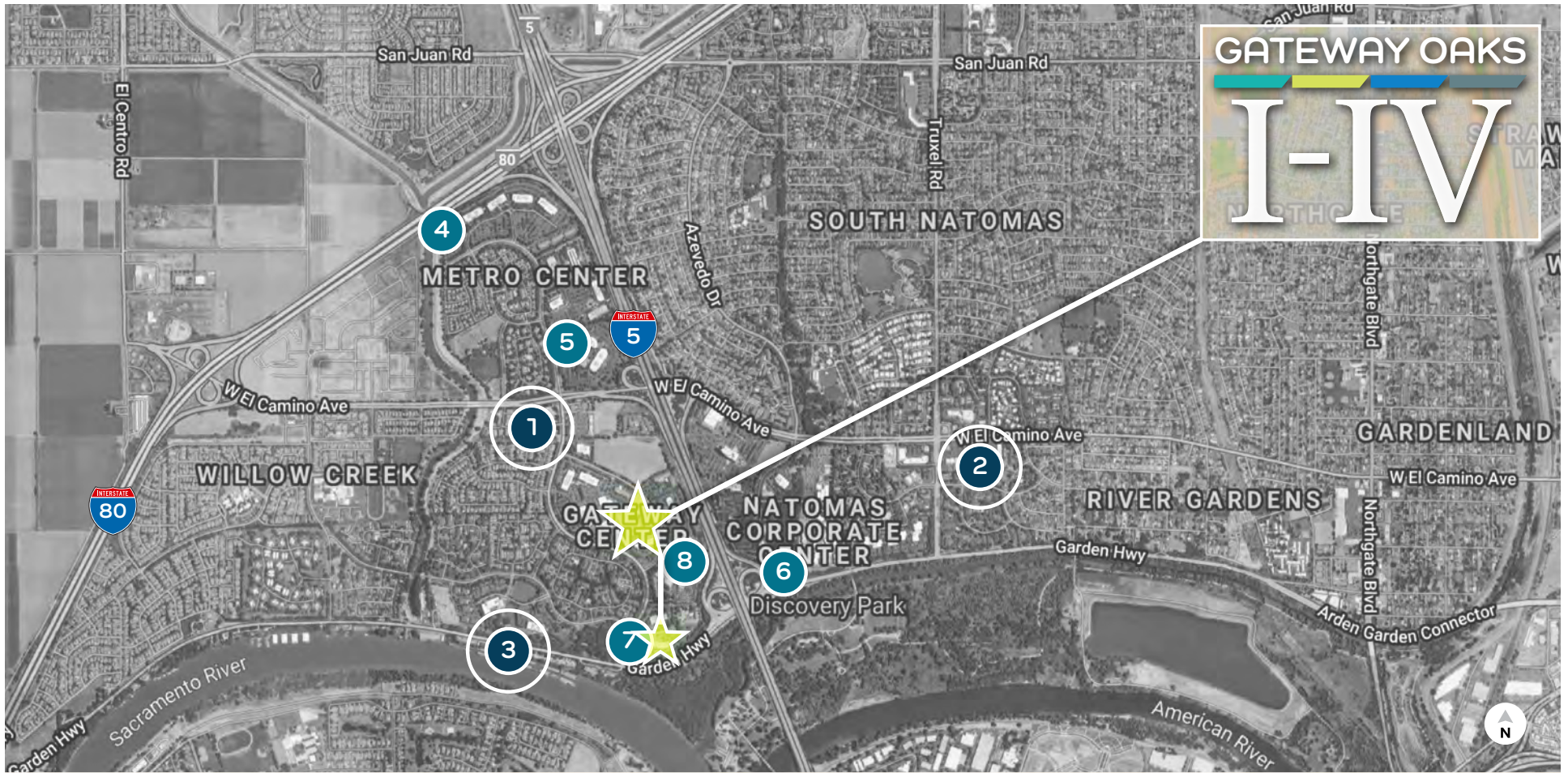
- PLENTIFUL FREE PARKING
- WIFI THROUGHOUT ALL COMMON AREAS & COLLABORATION SPACES
- HOTEL ROOM & BANQUET HALL DISCOUNTS AT THE COURTYARD BY MARRIOTT
- LUSH LANDSCAPE GROUNDS WITH TRANQUIL WATER FOUNTAINS
- NEW LOBBY & COMMON AREA IMPROVEMENTS
- FULLY FURNISHED SUITES AVAILABLE
- ON-SITE CAFÉ IN GATEWAY I
- NEW SECURITY SYSTEMS
- MERV-13 HVAC SYSTEMS



BUILDING PHOTOS



LOCATION OVERVIEW - NEARBY AMENITIES



- 1** GATEWAY OAKS DR. / W. EL CAMINO
- 2** TRUXEL / W. EL CAMINO
- 3** RIVER BANK MARINA
- OFFICE PARK CAFÉS**

- Jack in the Box
- Golden 1 Credit Union
- Sushi King
- New York Pizza Plus
- Subway
- Happy Chinese
- Shell
- Carl's Jr.
- Starbucks
- Togo's
- Baskin Robins
- Jamba Juice
- Good Friends Chinese
- Ruchi Indian Cuisine
- The Sandwich Spot

- Taco Bell
- Main Street Bagel Café
- Starbucks
- Bel Air
- Anthony's Italian Cuisine
- Azucar Sushi
- Dominos Pizza

- Donuts Plus
- Subway
- Pizza Guys
- La Bou
- Mezcal Taqueria
- Cheers Sports Bar
- Lotus Fusion Sushi & Chinese
- Country Waffles
- Little Caesars Pizza
- CVS Pharmacy
- Chang's Chinese
- Mr. Carnitas

- Chevy's
- Pearl
- Crawdad's

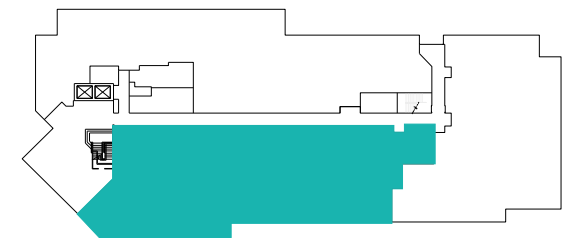
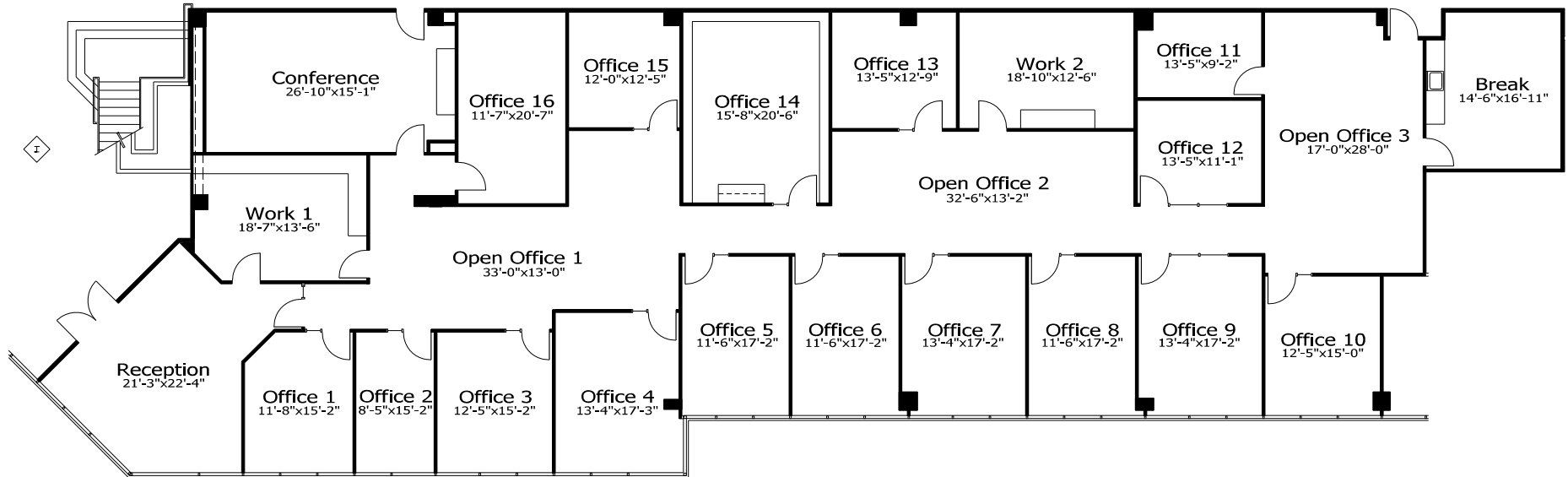
- 4** Metro Café
- 5** City Café
- 6** Natomas Café
- 7** Marriott Café
- 8** Venture Café

7,470 RSF | SUITE 100

2151 River Plaza Drive



Suites 100/150 Contiguous up to 9,962 RSF



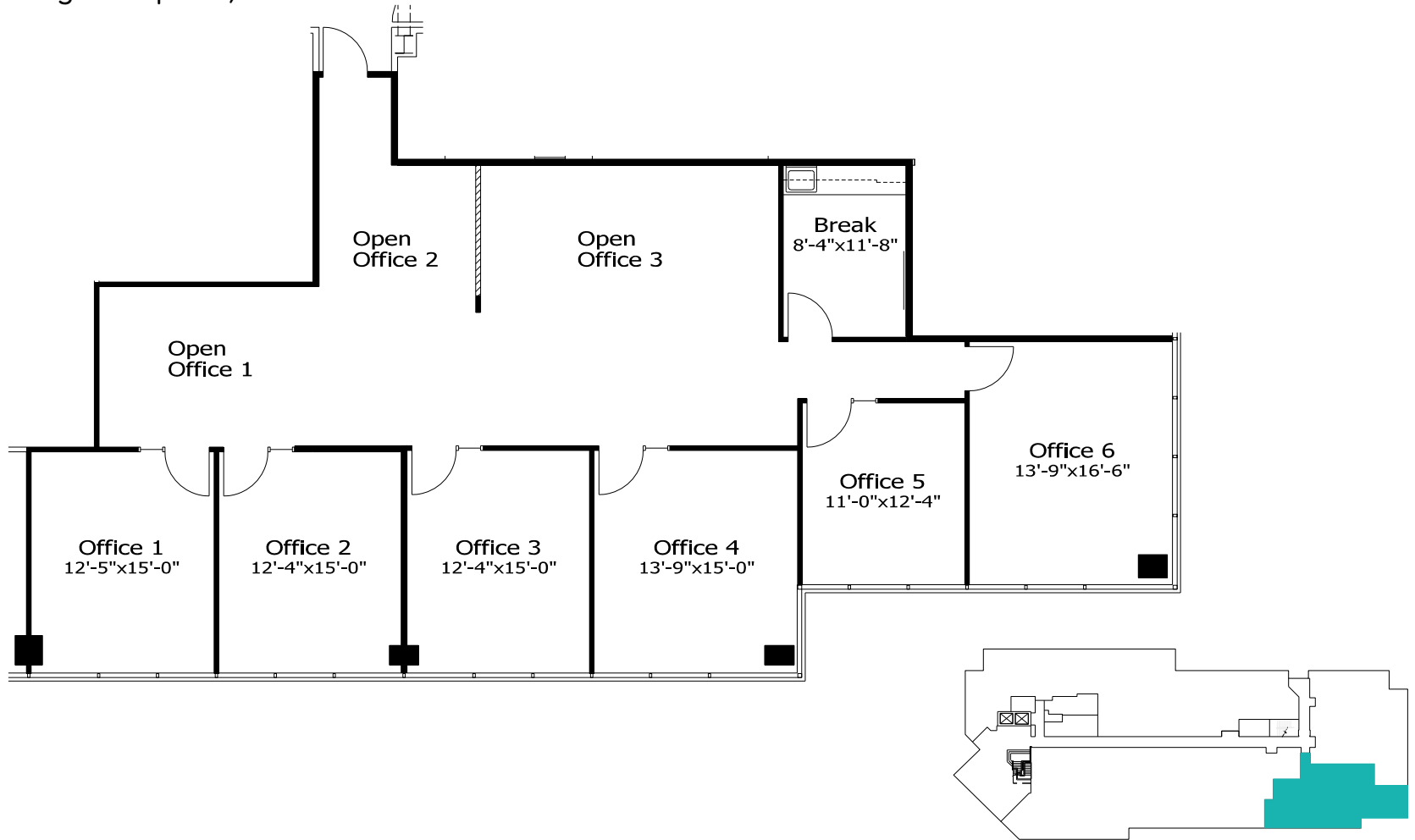
NOT TO SCALE. ALL MEASUREMENTS ARE APPROXIMATE.

2,492 RSF | SUITE 150

2151 River Plaza Drive

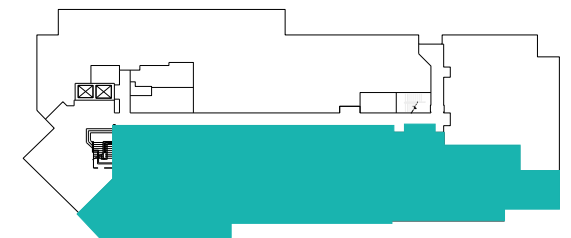
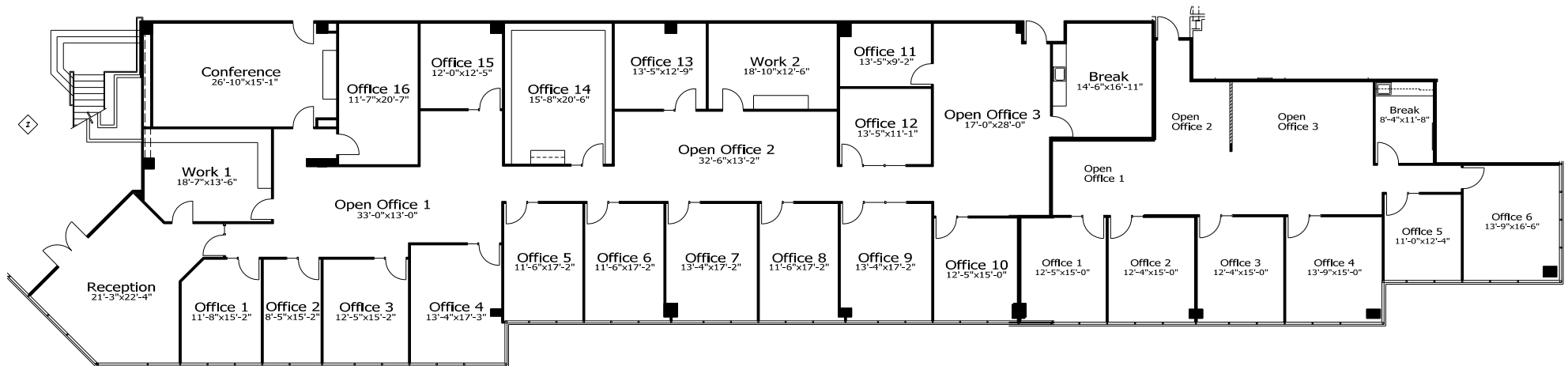


Suites 100/150 Contiguous up to 9,962 RSF



NOT TO SCALE. ALL MEASUREMENTS ARE APPROXIMATE.

9,962 RSF | SUITES 100/150
2151 River Plaza Drive



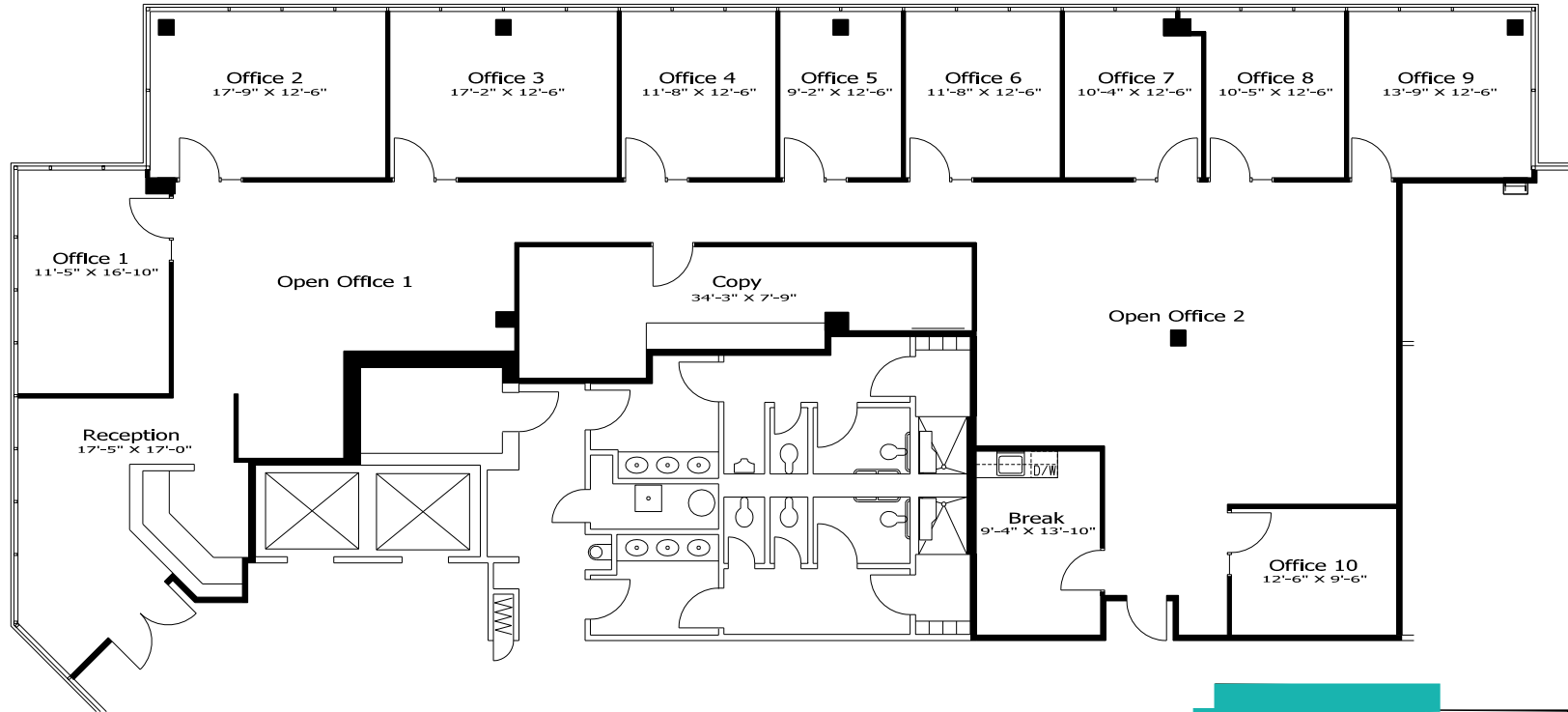
NOT TO SCALE. ALL MEASUREMENTS ARE APPROXIMATE.

4,368 RSF | SUITE 105

2151 River Plaza Drive



Suites 105/195 Contiguous up to 7,089 RSF



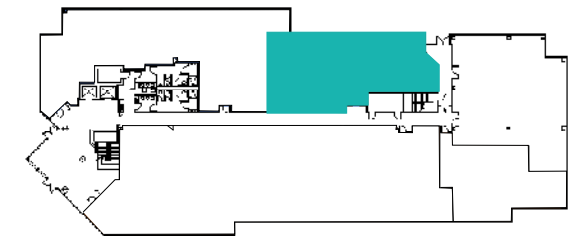
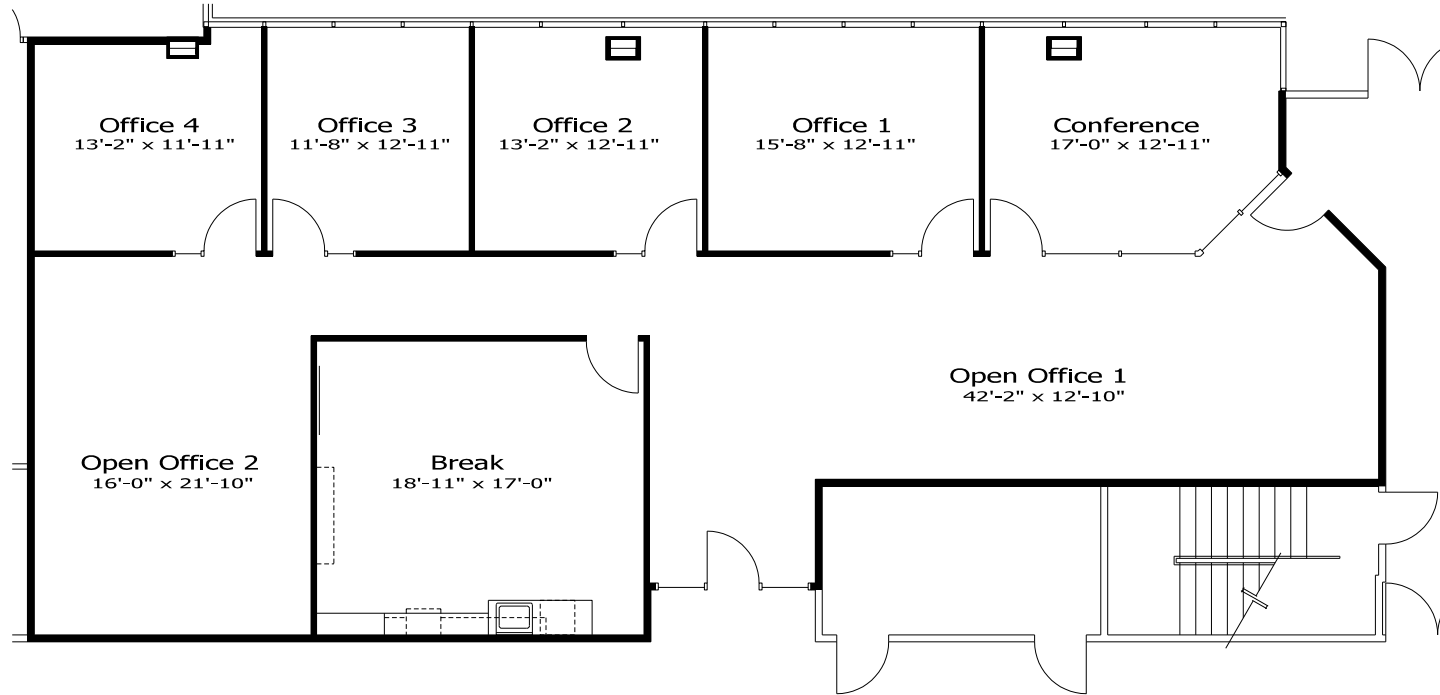
NOT TO SCALE. ALL MEASUREMENTS ARE APPROXIMATE.

2,721 RSF | SUITE 195

2151 River Plaza Drive



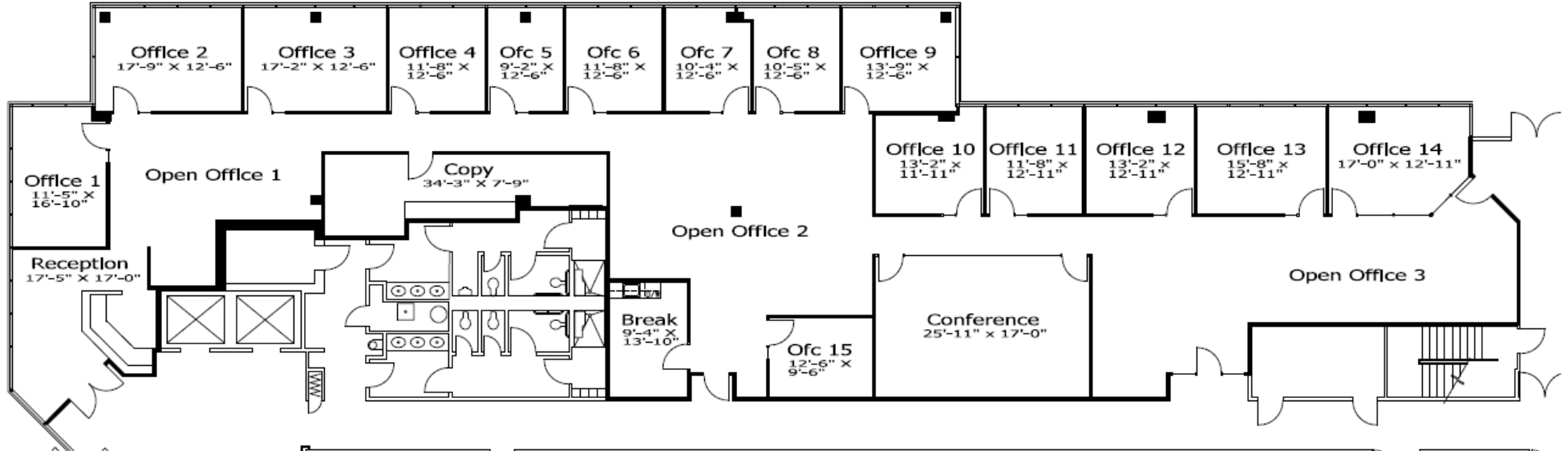
Suites 105/195 Contiguous up to 7,089 RSF



NOT TO SCALE. ALL MEASUREMENTS ARE APPROXIMATE.

7,089 RSF | SUITES 105/195

2151 River Plaza Drive



NOT TO SCALE. ALL MEASUREMENTS ARE APPROXIMATE.

FOR LEASE

2151 River Plaza Drive | Sacramento, CA

GATEWAY OAKS

II

EXCLUSIVE LISTING AGENTS:

TONY WHITTAKER

+1 916 492 6914
TONY.WHITTAKER@CBRE.COM
LIC. 01780828

JASON GOFF

+1 916 446 8222
JASON.GOFF@CBRE.COM
LIC. 01205230

NELLIE CRUZ

+1 916 492 6915
NELLIE.CRUZ@CBRE.COM
LIC. 02086140

HAYDEN NABERS

+1 916 446 8207
HAYDEN.NABERS@CBRE.COM
LIC. 02231233

