

FOR LEASE

2150 River Plaza Drive | Sacramento, CA

GATEWAY OAKS

I


**VIDEO
TOUR**

MODERN CLASS A WORKPLACE SUPPORTING CULTURE, COLLABORATION, AND WELLNESS

TONY WHITTAKER
+1 916 492 6914
TONY.WHITTAKER@CBRE.COM
LIC. 01780828

JASON GOFF
+1 916 446 8222
JASON.GOFF@CBRE.COM
LIC. 01205230

NELLIE CRUZ
+1 916 492 6915
NELLIE.CRUZ@CBRE.COM
LIC. 02086140

 **BASIN STREET
PROPERTIES** EST. 1974

CBRE

BUILDING PARK VISUAL OVERVIEW



GATEWAY OAKS I-IV

Downtown Sacramento

Sacramento River

American River



GO - I

GO - II

GO - IV

GO - III

GO - I

2150 RIVER PLAZA DR

GO - II

2151 RIVER PLAZA DR

GO - III

2295 GATEWAY OAKS DR

GO - IV

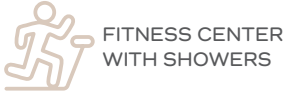
2520 VENTURE OAKS WY



PROPERTY AMENITIES



ON-SITE PROPERTY MANAGEMENT & ENGINEER



FITNESS CENTER WITH SHOWERS



CONFERENCE FACILITIES IN GATEWAY I & IV



TENANT LOUNGE IN GATEWAY I & IV



BIKE RACKS



EV CHARGING STATIONS

IN ADDITION TO THE PROPERTY AMENITIES, BELOW ARE THE SERVICES AND EXPERIENCES OFFERED TO TENANTS:

- PLENTIFUL FREE PARKING
- WIFI THROUGHOUT ALL COMMON AREAS & COLLABORATION SPACES
- HOTEL ROOM & BANQUET HALL DISCOUNTS AT THE COURTYARD BY MARRIOTT
- LUSH LANDSCAPE GROUNDS WITH TRANQUIL WATER FOUNTAINS
- NEW LOBBY & COMMON AREA IMPROVEMENTS
- FULLY FURNISHED SUITES AVAILABLE
- NEW SECURITY SYSTEMS

GATEWAY I AMENITIES TOUR

NEW CONCIERGE SERVICES!
NOW AVAILABLE ON DEMAND FOR TENANT BUSINESS SERVICES, FAMILY ENTERTAINMENT & TRAVEL ARRANGEMENTS

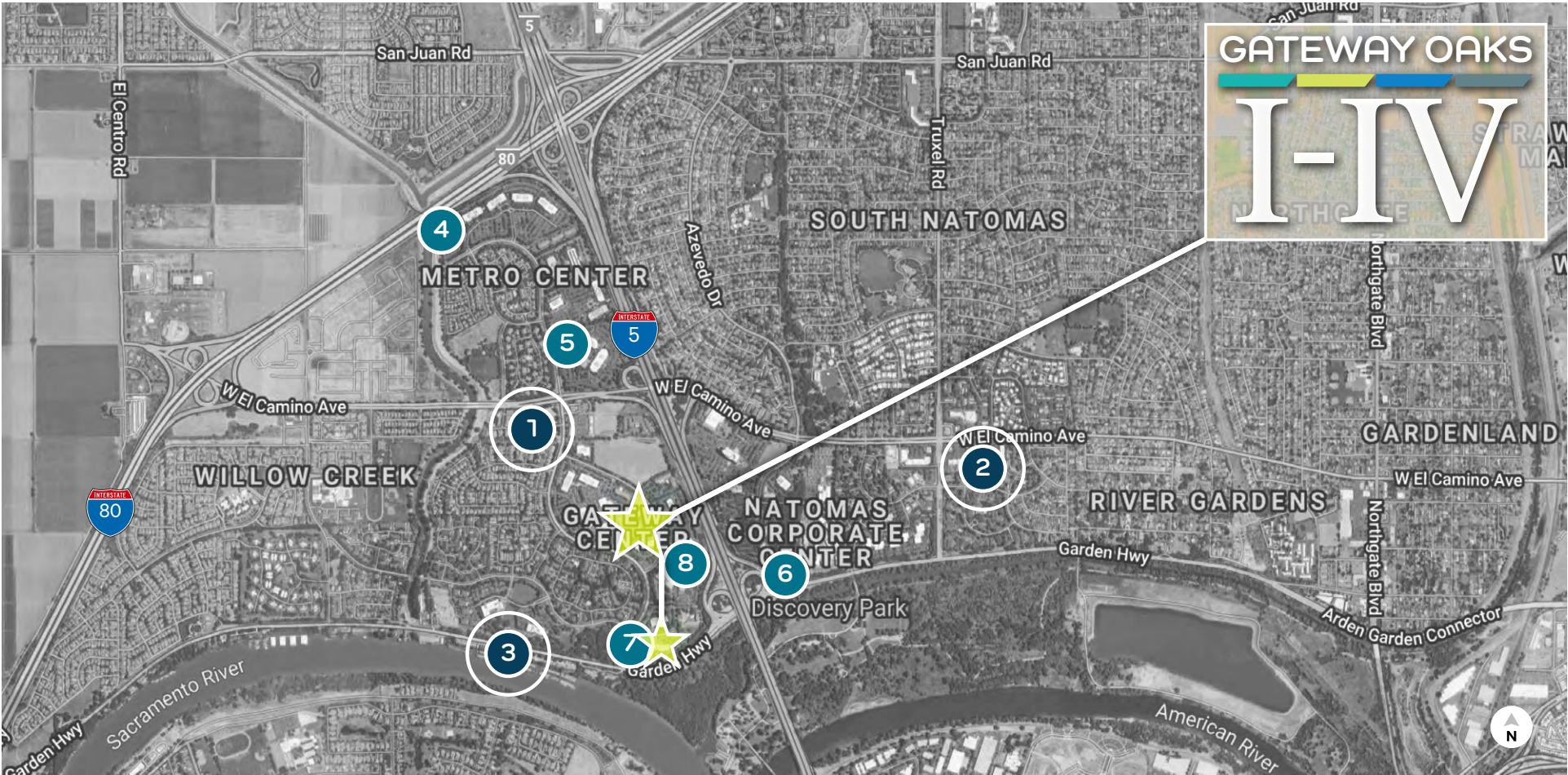
[*CLICK HERE FOR MORE INFORMATION](#)



BUILDING PHOTOS



LOCATION OVERVIEW - NEARBY AMENITIES



GATEWAY OAKS
I-IV

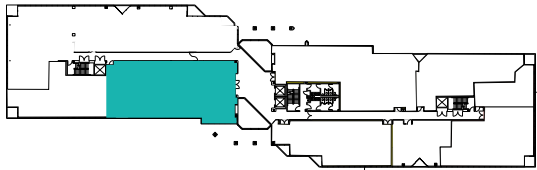
- 1** GATEWAY OAKS DR. / W. EL CAMINO
- 2** TRUXEL / W. EL CAMINO
- 3** RIVER BANK MARINA
- OFFICE PARK CAFÉS**

- | | | | | | |
|--|--|--|---|--|-------------------------------|
| Jack in the Box
Golden 1 Credit Union
Sushi King
New York Pizza Plus
Subway
Happy Chinese | Shell
Carl's Jr.
Starbucks
Togo's
Baskin Robins
Jamba Juice | Good Friends Chinese
Ruchi Indian Cuisine
The Sandwich Spot
Taco Bell
Main Street Bagel Café
Starbucks
Bel Air
Anthony's Italian Cuisine
Azukar Sushi
Dominos Pizza | Donuts Plus
Subway
Pizza Guys
La Bou
Mezcal Taqueria
Cheers Sports Bar
Lotus Fusion Sushi & Chinese | Country Waffles
Little Caesars Pizza
CVS Pharmacy
Chang's Chinese
Mr. Carnitas | Chevy's
Pearl
Crawdad's |
|--|--|--|---|--|-------------------------------|

- 4** Metro Café
- 5** City Café
- 6** Natomas Café
- 7** Marriott Café
- 8** Venture Café

5,249 RSF | SUITE 100

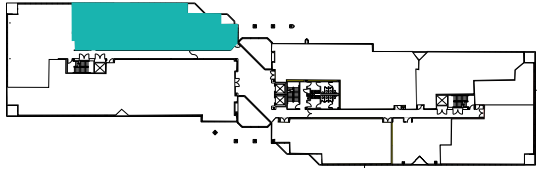
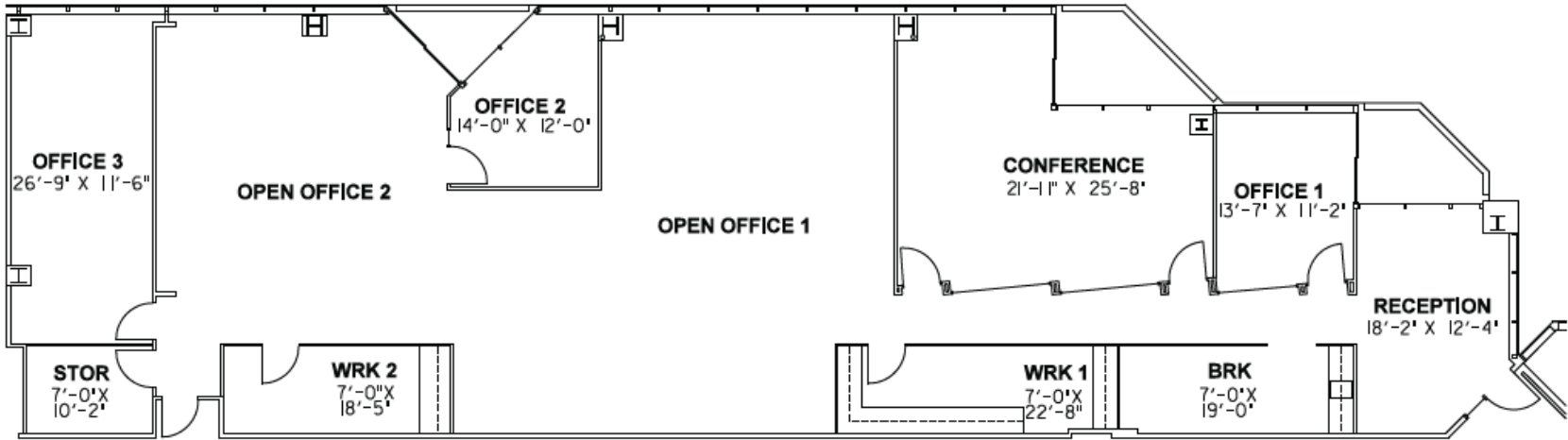
2150 River Plaza Drive



NOT TO SCALE. ALL MEASUREMENTS ARE APPROXIMATE.

4,284 RSF | SUITE 245

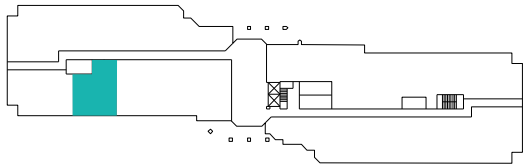
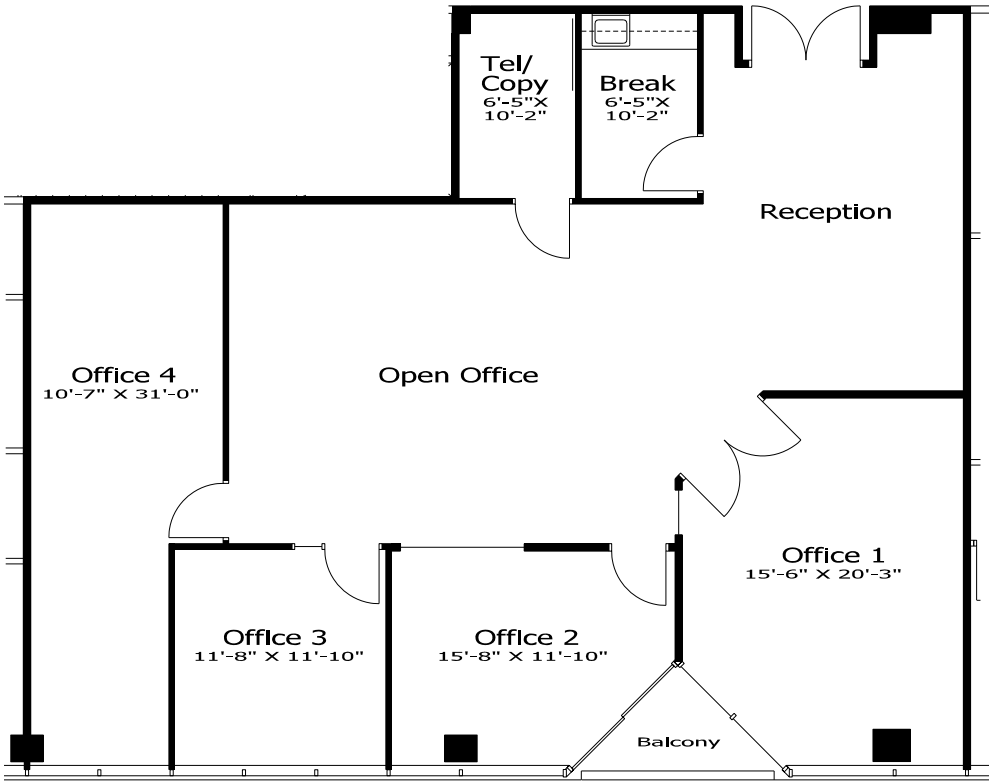
2150 River Plaza Drive



NOT TO SCALE. ALL MEASUREMENTS ARE APPROXIMATE.

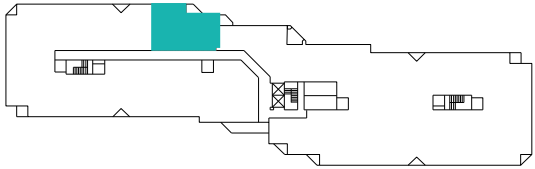
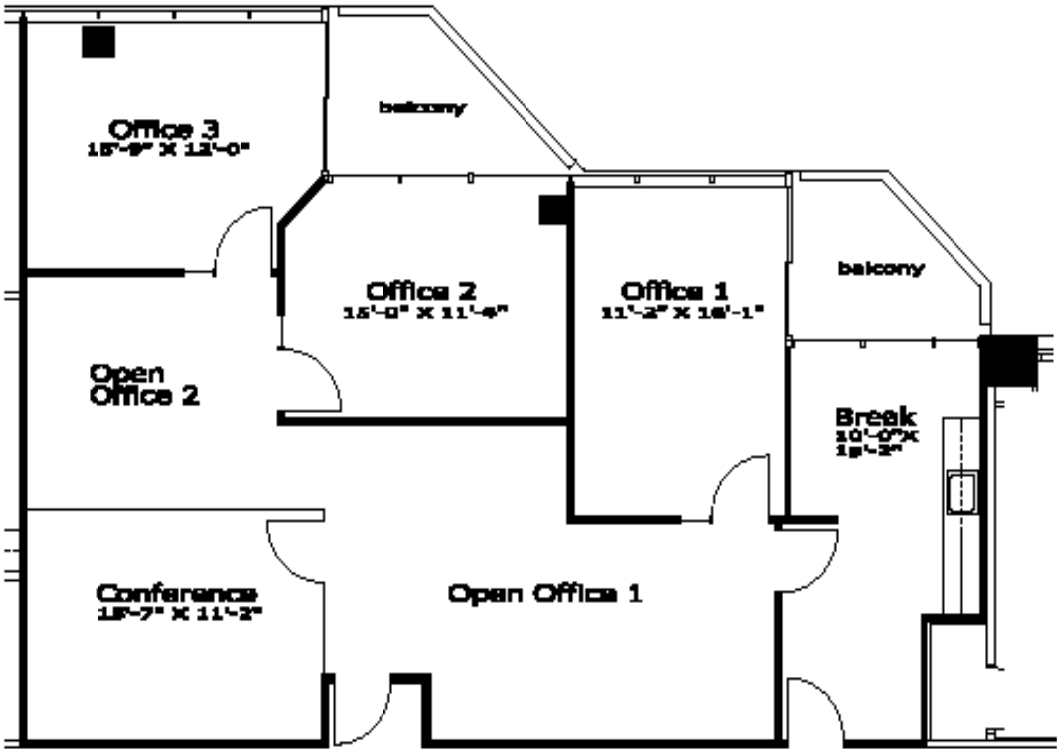
2,231 RSF | SUITE 340

2150 River Plaza Drive



NOT TO SCALE. ALL MEASUREMENTS ARE APPROXIMATE.

1,805 RSF | SUITE 420
2150 River Plaza Drive



NOT TO SCALE. ALL MEASUREMENTS ARE APPROXIMATE.

FOR LEASE

2150 River Plaza Drive | Sacramento, CA

GATEWAY OAKS

I

EXCLUSIVE LISTING AGENTS:

TONY WHITTAKER

+1 916 492 6914

TONY.WHITTAKER@CBRE.COM

LIC. 01780828

JASON GOFF

+1 916 446 8222

JASON.GOFF@CBRE.COM

LIC. 01205230

NELLIE CRUZ

+1 916 492 6915

NELLIE.CRUZ@CBRE.COM

LIC. 02086140

