

Eton Office Centre

Suite 225

8321 East 61st Street
Tulsa, OK 74133



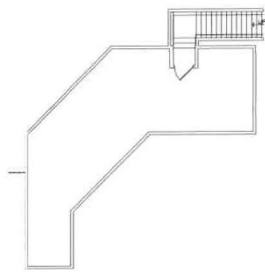
Suite 225 Features:

- + 9,713± RSF
- + Office, Medical, Retail Space
- + Signage Available
- + Full Service Gross Lease
- + Efficient General Office Layout
 - Storefront Entrance
 - Kitchen
 - Private Restroom
 - Conference Room
 - Multiple Hard Wall Offices

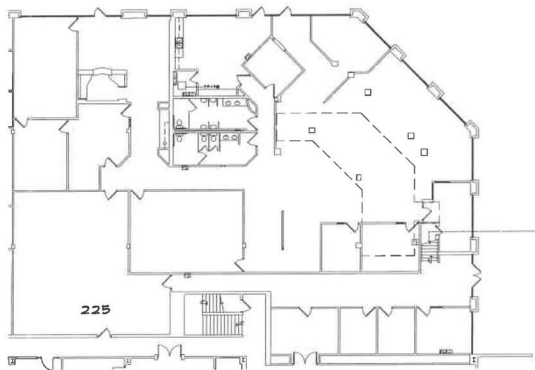
Property Features:

Eton Office Centre, located at 61st Street and Memorial Drive, provides an excellent South Tulsa location, with multiple suites available. This property offers ample parking, 24/7 access, and immediate proximity to restaurants and retail.

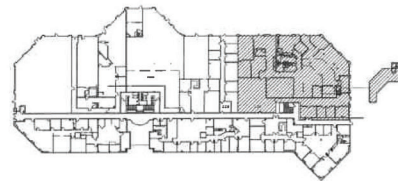
Floor Plan



B MEZZANINE FLOOR PLAN  781.69 R.S.F.
SCALE: N.T.S.



A 1ST FLOOR PLAN 
SCALE: N.T.S.



±9,713 RSF



kinslow, kelth & todd, inc.
architecture interior engineering
tel 918.744.4270
fax 918.744.7849
7700 south ulsaco plaza, suite 300
tulsa, oklahoma 74114
www.kktarchitects.com



**ETON
SQUARE
BUILDING B**

SUITE 225

NO.	REV.	DATE
1	ISSUED	11/15/14

AS-BUILT
PLAN

AS-2

Contact Us

Carrie Claiborne
Senior Associate
+1 918 906 0224
carrie.claiborne@cbre.com

Leslie Kirkpatrick, MBA
Associate
+1 918 557 2231
leslie.kirkpatrick@cbre.com

© 2022 CBRE, Inc. All rights reserved. This information has been obtained from sources believed reliable, but has not been verified for accuracy or completeness. You should conduct a careful, independent investigation of the property and verify all information. Any reliance on this information is solely at your own risk. CBRE and the CBRE logo are service marks of CBRE, Inc. All other marks displayed on this document are the property of their respective owners, and the use of such logos does not imply any affiliation with or endorsement of CBRE. Photos herein are the property of their respective owners. Use of these images without the express written consent of the owner is prohibited.

