

Braniff Park West

10536 E Pine Street
Tulsa, OK 74116
www.cbre.com/tulsa

Property Features

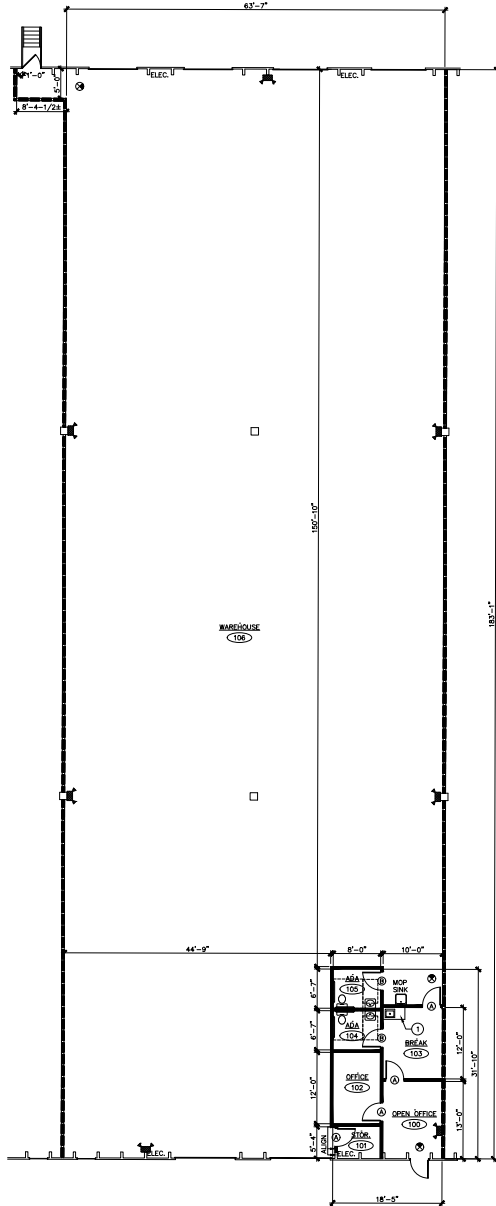
- + 11,642± SF Total
 - + 587± SF Office Area*
 - + 21' Ceiling Height
 - + Fully Sprinklered
 - + (2) 10' x 14' Drive-In Doors
 - + (3) 9' x 10' Dock High Doors with Dock Seals & Edge of Dock Levelers & Dock Lights
 - + (1) 9' x 9' Dock High Door with Dock Seals & Edge of Dock Levelers & Dock Lights
 - + Exhaust Fans
 - + Shop Heaters
 - + LED Lights
 - + Parking Ratio: 0.53/1,000 SF
 - + Built in 1978
 - + Zoned IL
 - + Highway 169 Frontage
- *Source: Owner



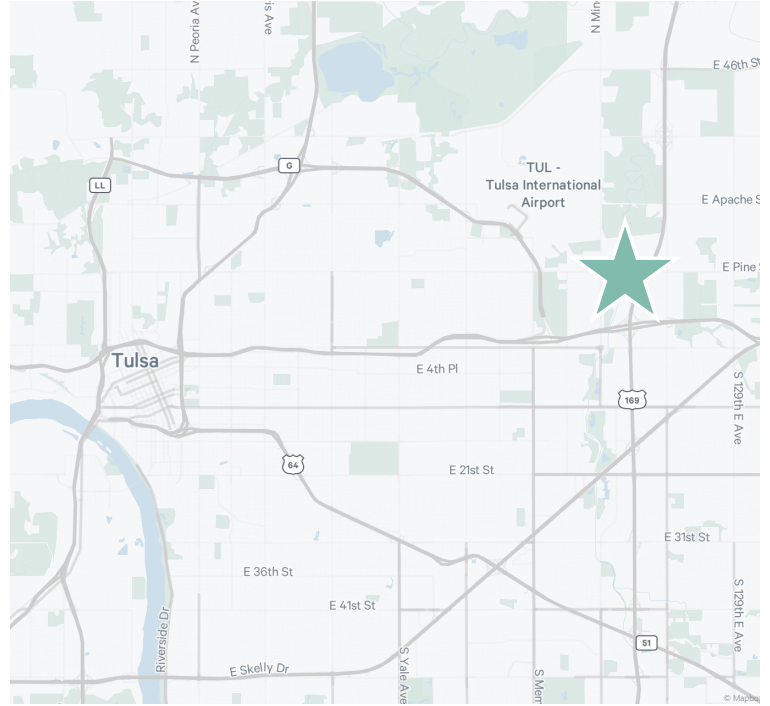
Braniff Park West

10568-10590 E Pine Street | Tulsa, OK 74116

For Lease



A FLOOR PLAN
SCALE: 1/8" = 1'-0"
NORTH



Contact Us

David Glasgow, SIOR, CCIM

First Vice President
+1 918 798 8787
david.glasgow@cbre.com

Alex Powell, CCIM

First Vice President
+1 918 706 3578
alexander.powell@cbre.com

Kurt Giller, SIOR, CCIM

Vice President
+1 785 341 7071
kurt.giller@cbre.com

© 2026 CBRE, Inc. All rights reserved. This information has been obtained from sources believed reliable, but has not been verified for accuracy or completeness. You should conduct a careful, independent investigation of the property and verify all information. Any reliance on this information is solely at your own risk. CBRE and the CBRE logo are service marks of CBRE, Inc. All other marks displayed on this document are the property of their respective owners, and the use of such logos does not imply any affiliation with or endorsement of CBRE. Photos herein are the property of their respective owners. Use of these images without the express written consent of the owner is prohibited.