



# CLARION PARTNERS

## JOHN YOUNG BUSINESS PARK

7153 S. JOHN YOUNG PARKWAY ORLANDO, FL, 32809

**FOR LEASE**



**±85,450 SF AVAILABLE | 30' CLEAR HEIGHT | 31 DOCK-HIGH DOORS**

### Warehouse Space for Lease in Orlando's Prime Location:

- + Situated in Orlando Central Park
- + John Young Parkway Direct Frontage
- + 5.6 Miles | 10 Minutes to Interstate-4
- + 7.4 Miles | 14 Minutes to Florida's Turnpike
- + 12.1 Miles | 15 Minutes to Orlando Int'l Airport
- + 11.7 Miles | 16 Minutes to Beachline Expressway



**David Murphy**  
 Vice Chairman  
 +1 407 404 5020  
 david.murphy@cbre.com

**Monica Wonus**  
 Executive Vice President  
 +1 407 404 5042  
 monica.wonus@cbre.com

**Gaby Gissy**  
 Associate  
 +1 407 404 5012  
 gaby.gissy@cbre.com

**Sharif Baker**  
 Associate  
 +1 407 404 5018  
 sharif.baker@cbre.com





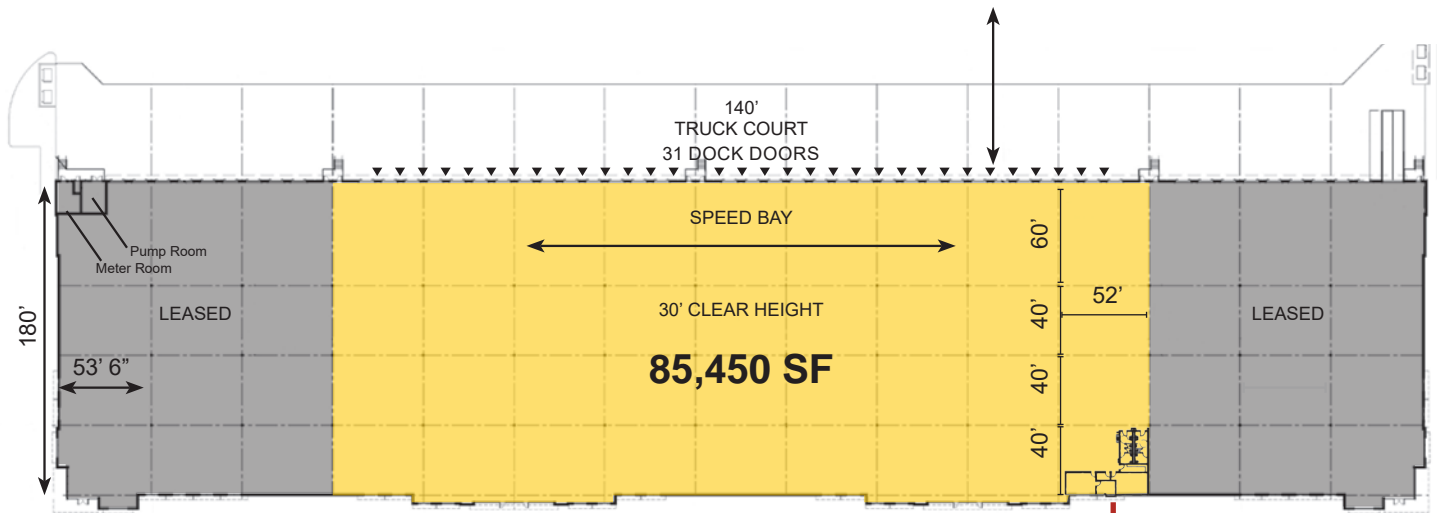
# CLARION PARTNERS

## JOHN YOUNG BUSINESS PARK

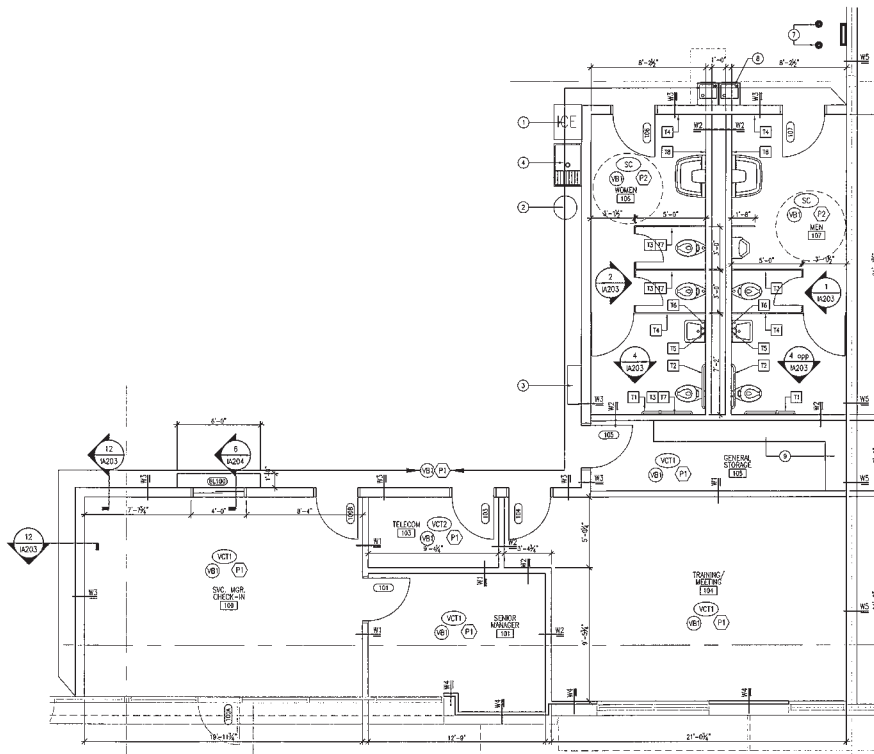
7153 S. JOHN YOUNG PARKWAY ORLANDO, FL, 32809

### PROPERTY OVERVIEW

- 85,450± SF Available
- 1,405 SF Office
- Loading: Dock-High, Rear Load
- Doors: 31 Dock High, 1 Ramped Door 12'x14'
- Clear Height" 30'
- Column Width: 52'
- Truck Court: 140'
- Additional Trailer Parking: 15 Spaces
- Parking Ratio: 1.4/1,000
- Fire Suppression: (ESFR) System for Racking to Girders
- T8 Interior Lighting with Occupancy Sensors
- 2 Big Ass Fans
- Fans at every dock door
- 4 Exhaust Fans
- 600 Amps at 277/480V



### OFFICE: 1,405 SF





# CLARION PARTNERS

## JOHN YOUNG BUSINESS PARK

7153 S. JOHN YOUNG PARKWAY ORLANDO, FL, 32809



### DAVID MURPHY

Vice Chairman  
407 404 5020  
david.murphy@cbre.com

### MONICA WONUS

Executive Vice President  
407 404 5042  
monica.wonus@cbre.com

### GABY GISSY

Associate  
407 404 5012  
gaby.gissy@cbre.com

### SHARIF BAKER

Associate  
407 404 5018  
sharif.baker@cbre.com