



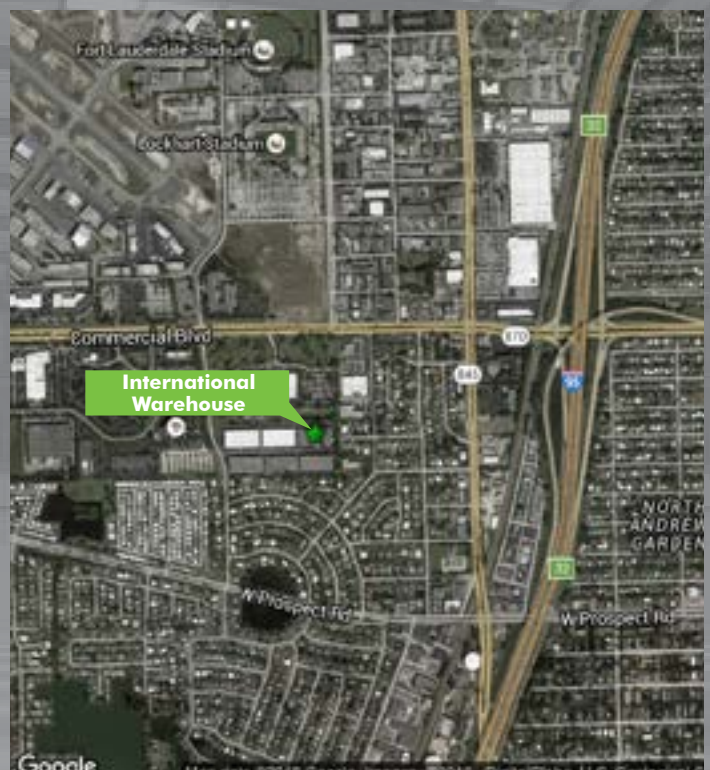
International Warehouse

4710 NW 15th Avenue, Unit 5 B-C | Fort Lauderdale, FL 33309

International Warehouse is located just off of Commercial Blvd. and I-95 in Fort Lauderdale, FL. Building 4710 Suite 5 C consists of a total $\pm 9,560$ SF with $\pm 1,000$ SF of office in an open plan layout with perimeter offices, conference room, kitchenette and restrooms. This space also has two (2) van doors, and one(1) drive-in door. All loading doors are oversized. This is ideal for any company that utilizes both dock and grade level loading doors allowing flow from multiple points in the building. The oversized doors are also perfect for parking larger service vehicles indoors. This suite features; LED lighting, a Twin-T-Roof, $\pm 22'$ clear height, it has partial fire sprinklers, professional property management and institutional ownership. This industrial park offers suites from $\pm 3,000$ SF to over $\pm 30,000$ SF.

Highlights

Total Building SF:	39,766 SF
Available Space:	$\pm 9,560$ SF
Office SF:	$\pm 1,000$ SF
Ceiling Height:	22' clear
Sprinkler System:	Partial
HVAC:	100%
Loading:	1 drive-in, 1 dock, 2 van height doors
Lighting:	LED
Roof:	Twin-T-Roof
Available:	April 1, 2025
Amenities:	Top schools, banks/retail, hotels, airports & seaports and high end residential communities nearby.



International Warehouse

4710 NW 15th Avenue, Unit 5C | Fort Lauderdale, FL 33309

For Lease



Contacts

Broker Contact:

Tom O'Loughlin

Vice Chairman

Direct: (954) 817-3919

tom.oloughlin@cbre.com

Michael Oretsky

Vice President

Direct: (954) 798-4284

michael.oretsky@cbre.com

CBRE

Owner Contact:

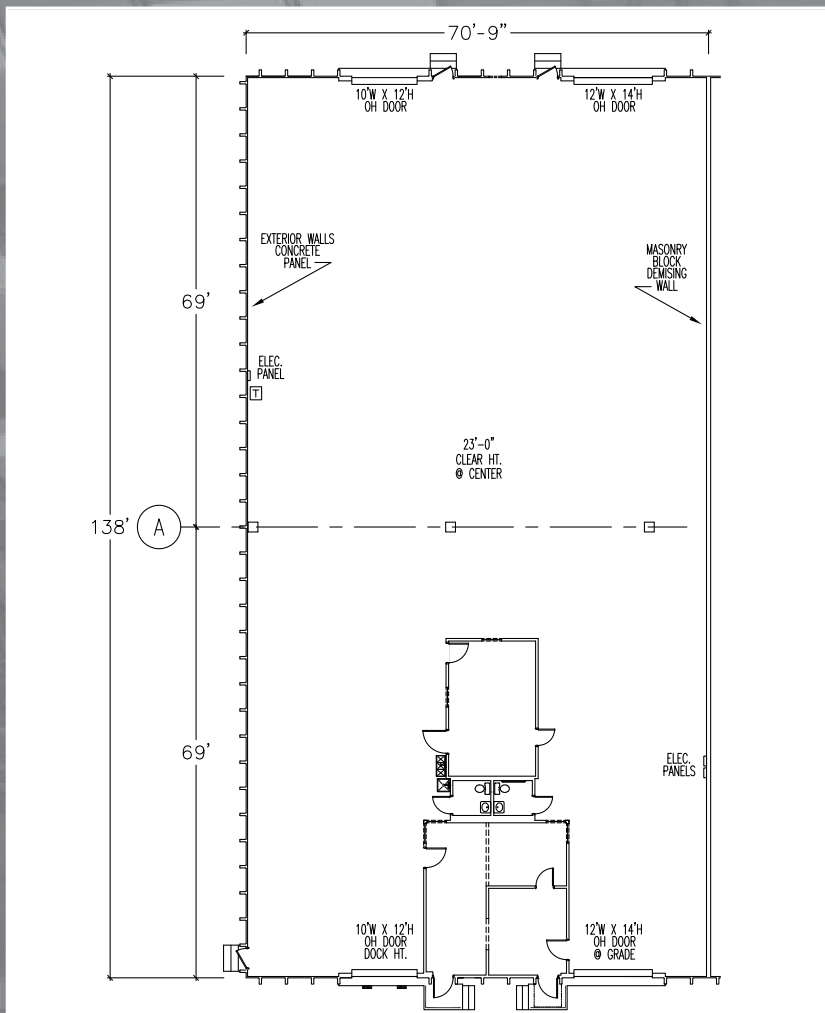
Brad Kluever

Senior Regional Director

Direct: (312) 344-4347

bkluever@firt.com

FIRST
INDUSTRIAL
REALTY • TRUST



© 2025 CBRE, Inc. This information has been obtained from sources believed reliable. We have not verified it and make no guarantee, warranty or representation about it. Any projections, opinions, assumptions or estimates used are for example only and do not represent the current or future performance of the property. You and your advisors should conduct a careful, independent investigation of the property to determine to your satisfaction the suitability of the property for your needs.

CBRE, Inc. | Licensed Real Estate Broker

www.firstindustrial.com
www.cbre.com