

# 1677

eureka road suite 100

FOR LEASE



**CBRE**

# property details

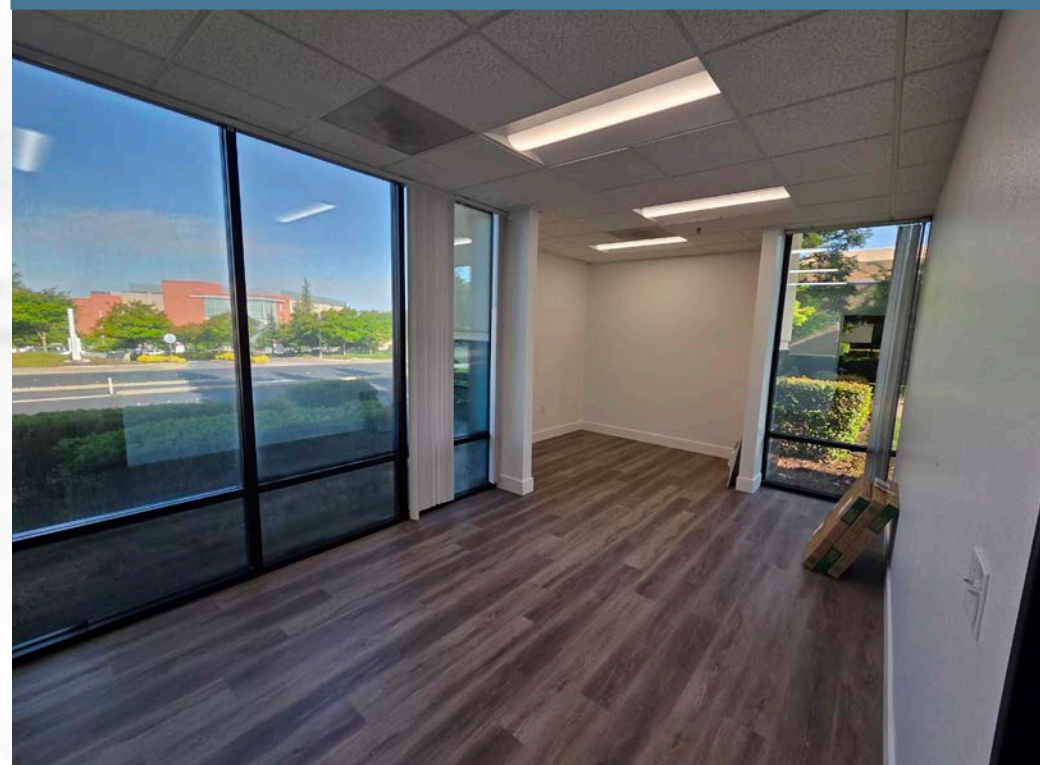
1677 Eureka Road, Roseville, CA 95661

Suite 100 | ±3,694 SF | Available Now

\$2.05 PSF | Full Service Gross

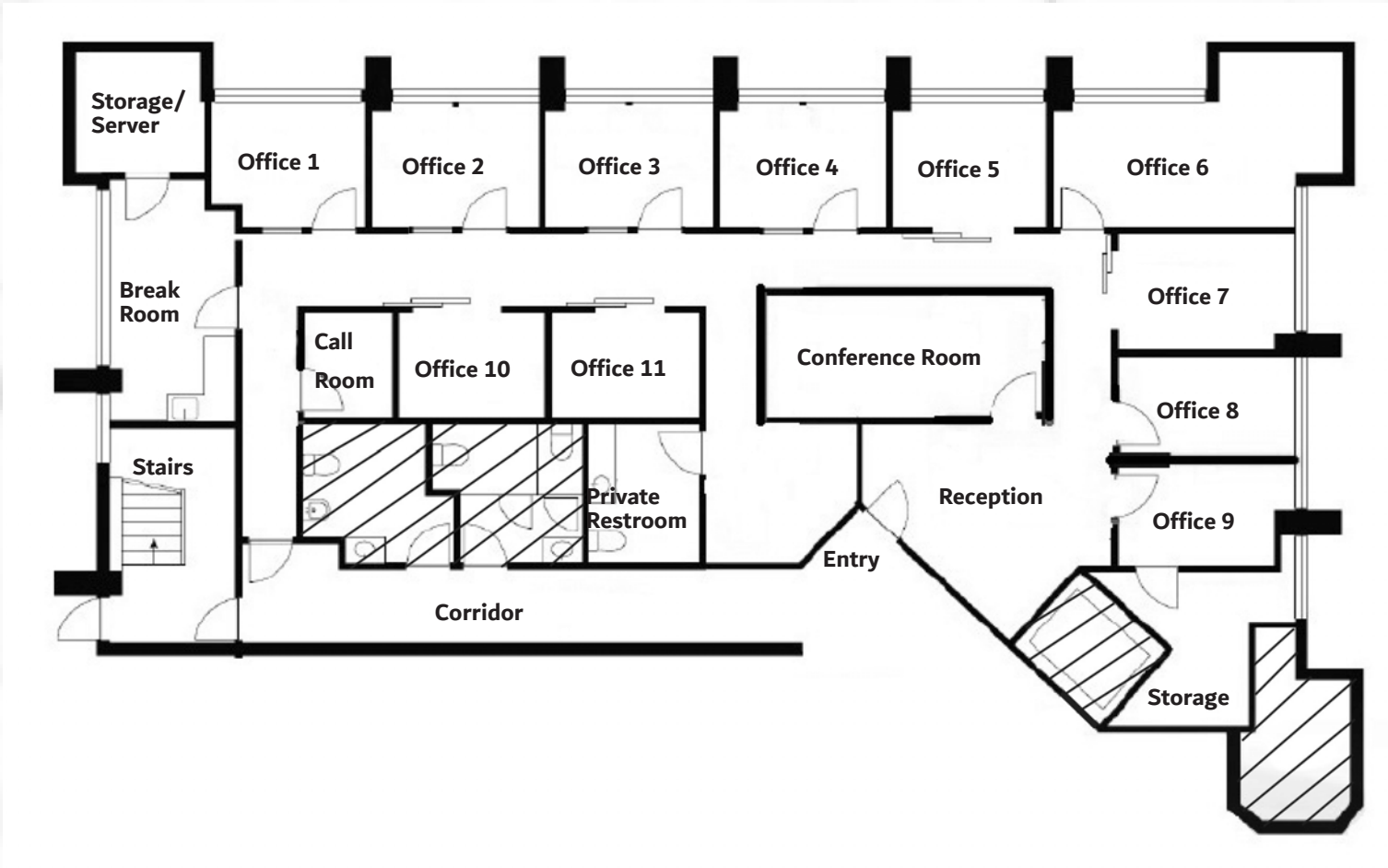
Suite has Private Restroom and Break Room

- » 2 Stories, Class B Office Building
- » Built in 1997
- » ±11,915 SF total in building
- » Located in the Olympus Pointe Center off of Douglas Boulevard and Eureka Road
- » Walking distance to Mikuni Sushi, Bennett's, Casa Ramos, Jamba Juice, Sprouts, and more
- » Near restaurants, shopping, entertainment, and banking



# FLOOR PLAN

Suite 100 | ±3,694 SF | \$2.05 PSF, FSG | Available Now



Not to scale. All dimensions are approximate.



# 1677

## eureka road

---

### CONTACT US

Kevin Larscheid  
Executive Vice President  
+1 916 781 4818  
kevin.larscheid@cbre.com  
Lic. 00816790

Scott Rush  
First Vice President  
+1 916 781 4802  
scott.rush@cbre.com  
Lic. 01228497

Phillip Larscheid  
Sales Associate  
+1 916 781 4848  
phillip.larscheid@cbre.com  
Lic. 02434984

© 2023 CBRE, Inc. All rights reserved. This information has been obtained from sources believed reliable, but has not been verified for accuracy or completeness. You should conduct a careful, independent investigation of the property and verify all information. Any reliance on this information is solely at your own risk. CBRE and the CBRE logo are service marks of CBRE, Inc. All other marks displayed on this document are the property of their respective owners, and the use of such logos does not imply any affiliation with or endorsement of CBRE. Photos herein are the property of their respective owners. Use of these images without the express written consent of the owner is prohibited.



**CBRE**