

Available SF 22,390 SF

Industrial For Lease

Building Size 22,390 SF



Address: 6111 Scott Way, Commerce, CA 90040

Cross Streets: Scott Way/Randolph St

Great Commerce Location, Cul-De-Sac
Large Fenced Yard
2 Dock High Positions

Lease Rate/Mo:	\$27,988	Sprinklered:	Yes	Office SF / #:	3,280 SF / 4
Lease Rate/SF:	\$1.25	Clear Height:	20'	Restrooms:	3
Lease Type:	Gross	GL Doors/Dim:	3	Office HVAC:	Heat & AC
Available SF:	22,390 SF	DH Doors/Dim:	2	Finished Ofc Mezz:	1,590 SF
Minimum SF:	22,390 SF	A: 1200 V: 480 O: 3 W: 4		Include In Available:	Yes
Prop Lot Size:	1.15 Ac / 49,912 SF	Construction Type:	TILT UP	Unfinished Mezz:	0 SF
Term:	Acceptable to Owner	Const Status/Year Blt:	Existing / 1966	Include In Available:	No
Sale Price:	NFS	Whse HVAC:	No	Possession:	Now
Sale Price/SF:	NFS	Parking Spaces: 30 / Ratio: 1.3:1		Vacant:	Yes
Taxes:	\$22,515 / 2025	Rail Service:	No	To Show:	Call broker
Yard:	Fenced	Specific Use:	Light Industrial	Market/Submarket:	Commerce/Vernon
Zoning:	M2			APN#:	6332-017-011,6332-017-012
Listing Company:	CBRE - El Segundo				
Agents:	Jack Mergenthaler 310-363-4946 , John Stephens 626-862-5215 , Jeff Stephens 213-613-3761				
Listing #:	45157605	Listing Date:	06/29/2026	FTCF:	CB250N000S000/A0AA
Notes:	All measurements approximate. Tenant's broker to verify all information.				



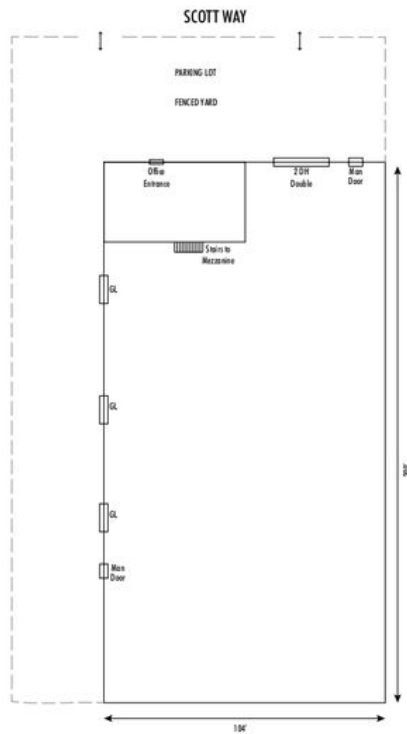
Industrial | For Lease



6111 Scott Way

Commerce, CA

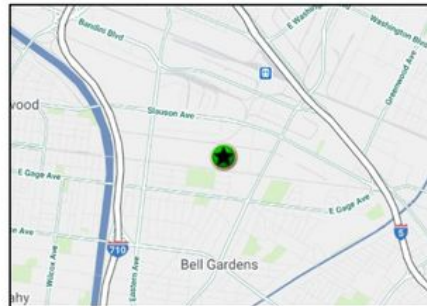
SITE PLAN



HIGHLIGHTS

- Great Commerce Location
- Cul-De-Sac
- Large Fenced Yard
- 2 Dock High Positions

LOCATOR MAP



Contact Us

Jack Mergenthaler, SIOR

Senior Vice President
 +1 310 363 4946
 jack.mergenthaler@cbre.com
 Lic. 01942974

John Stephens

Associate
 +1 626 862 5215
 john.r.stephens@cbre.com
 Lic. 02159924

Jeff Stephens, SIOR

Executive Vice President
 +1 213 952 0174
 jeffrey.stephens@cbre.com
 Lic. 01051764

© 2026 CBRE, Inc. All rights reserved. This information has been obtained from sources believed reliable, but has not been verified for accuracy or completeness. You should conduct a careful, independent investigation of the property and verify all information. Any reliance on this information is solely at your own risk. CBRE and the CBRE logo are service marks of CBRE, Inc. All other marks displayed on this document are the property of their respective owners, and the use of such logos does not imply any affiliation with or endorsement of CBRE. Photos herein are the property of their respective owners. Use of these images without the express written consent of the owner is prohibited.



Jack Mergenthaler
 jack.mergenthaler@cbre.com
 310-363-4946

