



CLARION PARTNERS

For Lease

1100 N. 28<sup>th</sup> Avenue

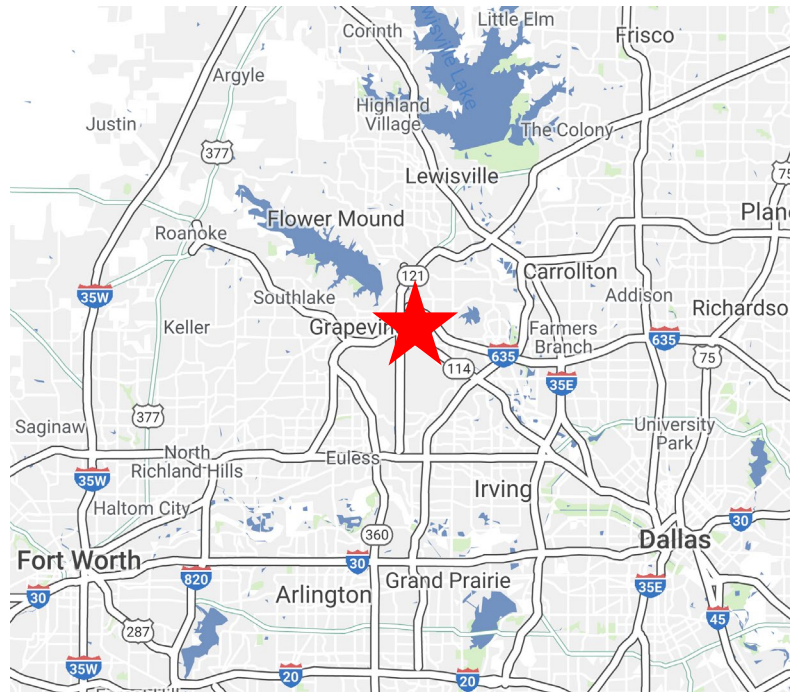
Irving, TX 75063

40,000 Square Feet Available



#### BUILDING HIGHLIGHTS

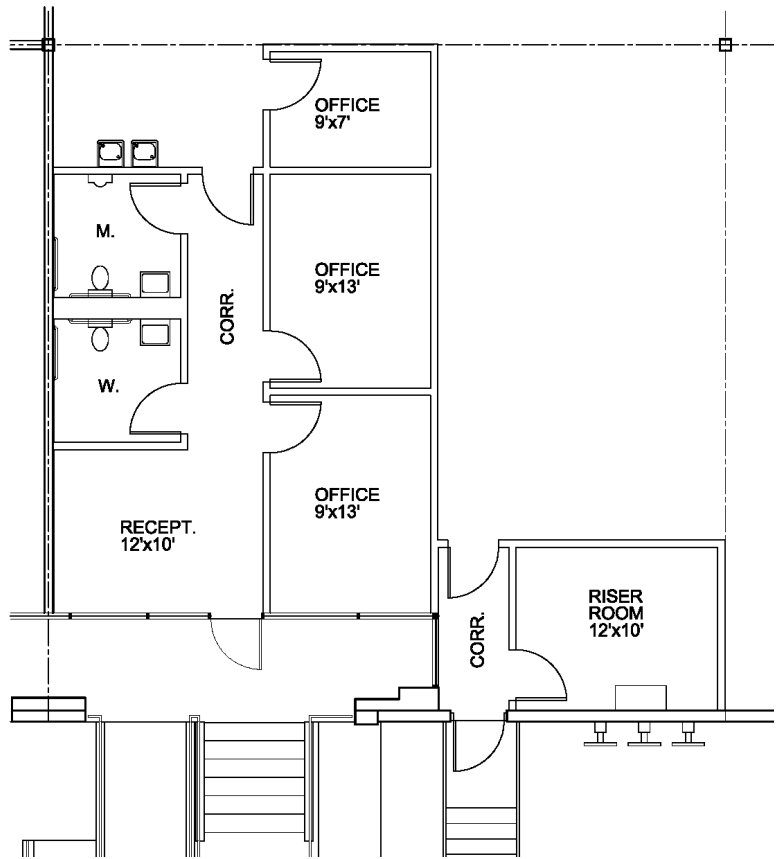
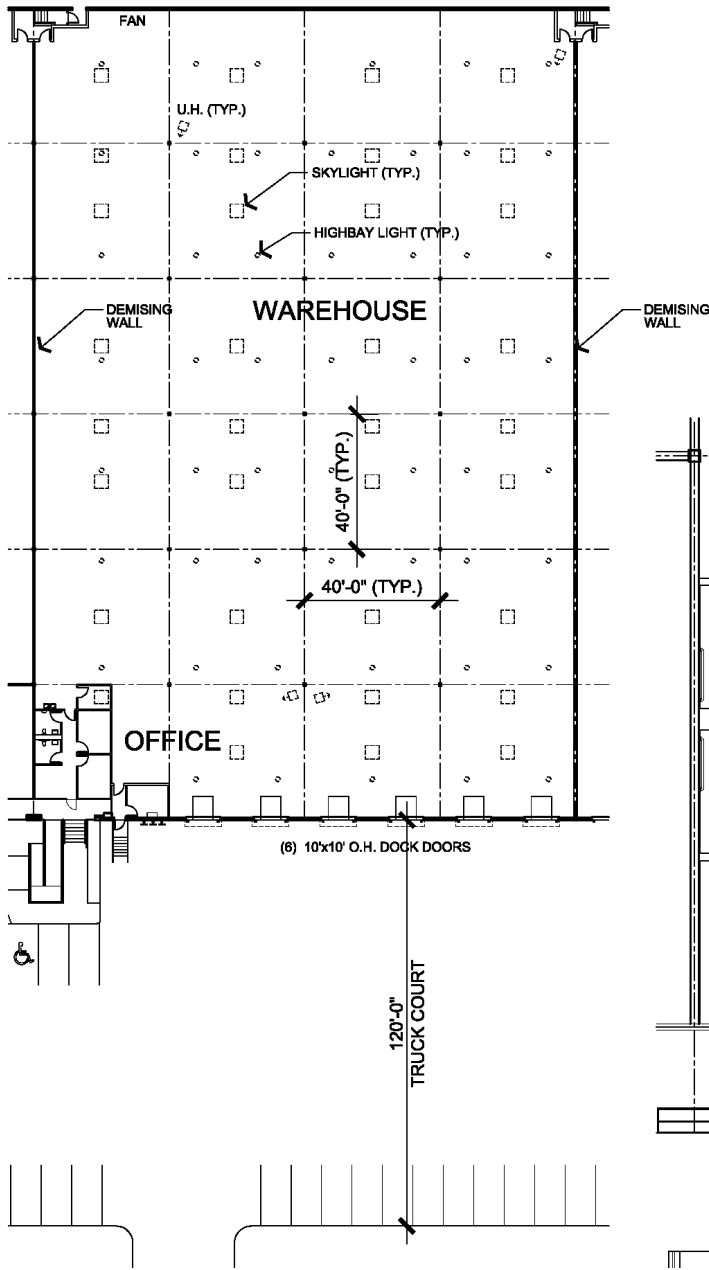
- 40,000 SF Available
- 827 SF Office
- 24' Clear
- (6) 10' x 10' Dock High
- 40' x 40' Column Spacing
- 240' Building Depth
- Front Load Design
- Fully Sprinklered
- 120' Concrete Truck Court
- Foreign Trade Zone
- Easy Access to All Major Thoroughfares





# CLARION PARTNERS

1100 N. 28<sup>th</sup> AVE



For more information on this opportunity, please contact



**CLARION PARTNERS**

[www.clarionpartners.com](http://www.clarionpartners.com)



Steve Trese  
214.979.6534

[Steve.trese@cbre.com](mailto:Steve.trese@cbre.com)

Wilson Brown  
214.979.6582

[Wilson.brown@cbre.com](mailto:Wilson.brown@cbre.com)