

FOR LEASE



111 EAST SEGO LILY  
**nuveen**

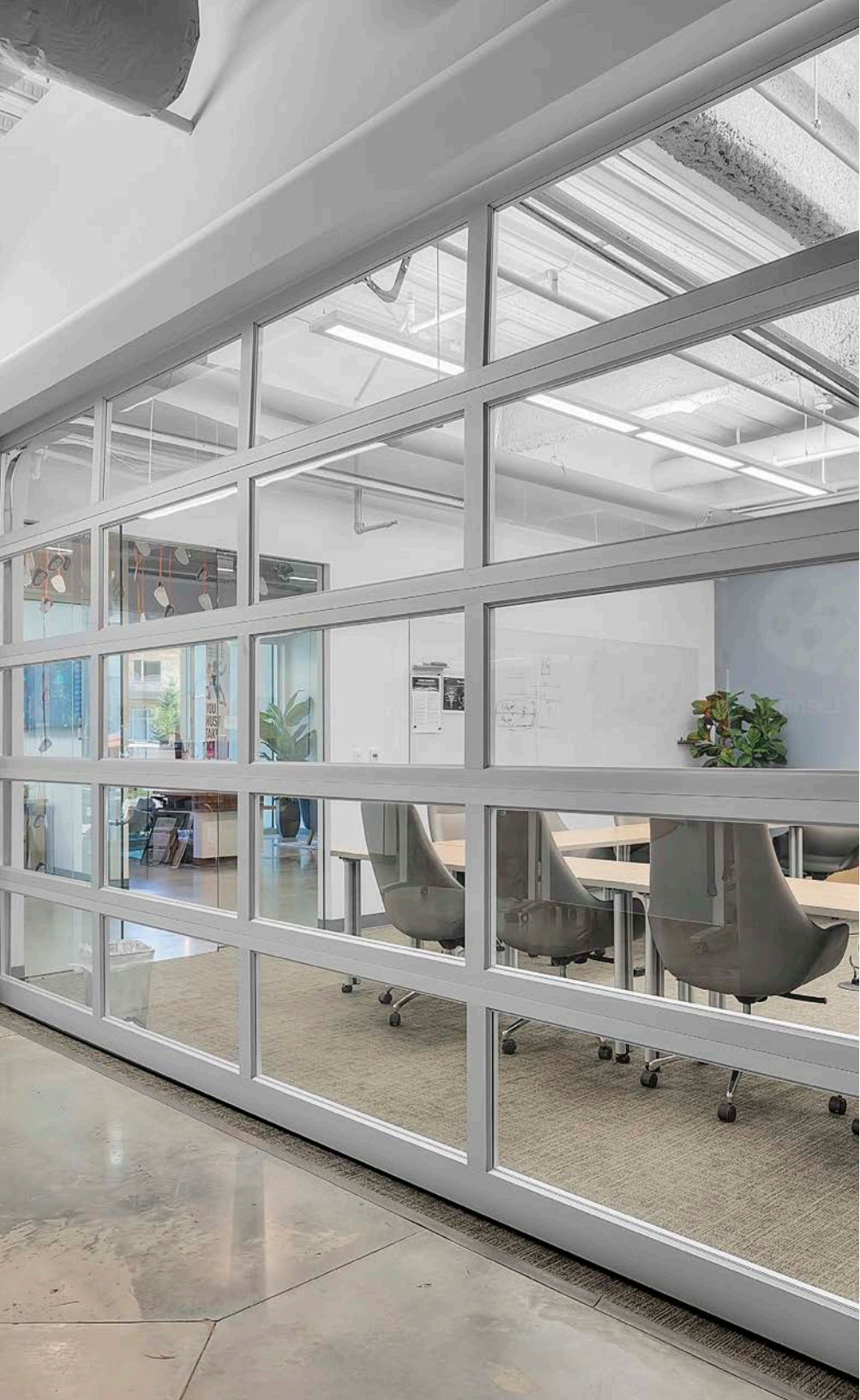
111 East Sego Lily  
Sandy, Utah 84070

# Beautifully appointed. Amazing location.

- \$31.00/ RSF, Full Service Gross
- 4.5/1,000 Parking Ratio per USF Structural/covered Parking
- Four electric charging stations
- Excellent access to I-15 from either 90th South or 106th South
- Telecommunications services provided by XO Communications (Verizon), CenturyLink, and Comcast
- Floor to ceiling glass
- LEED Platinum v4
- Exercise facility with lockers and showers
- Short walk to South Jordan FrontRunner Station
- Short drive to The Shops at South Town and many additional amenities
- In close proximity to bike/walking paths and picnic areas via the Jordan River Parkway

111 SEGO LILY | SANDY, UT 84070

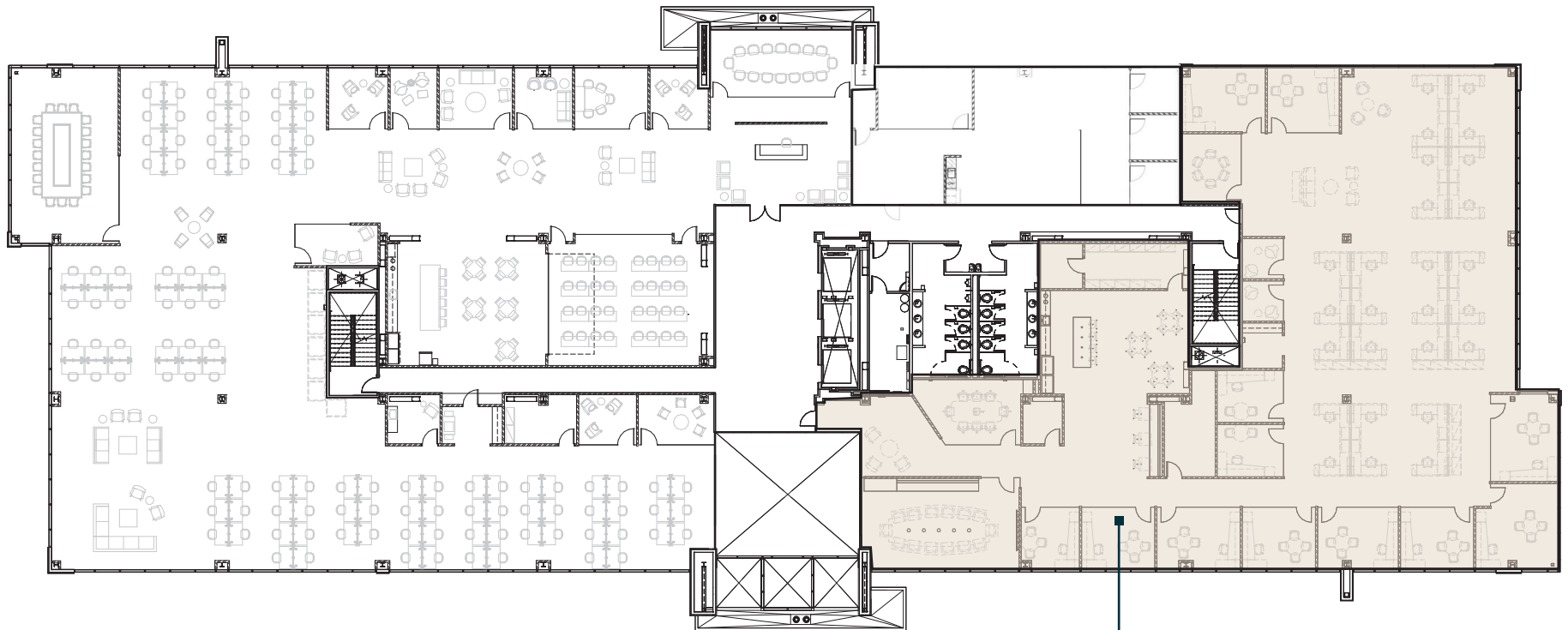






# Floor plan | Second floor

Suite 200 - 11,673 RSF Available September 1, 2026



Suite 200 - 11,673 RSF



BRIDGE  
INVESTMENT  
GROUP

avidexchange

111 Sego Lily  
Sandy, Utah 84070



## CONTACT INFORMATION.

### SCOTT WILMARTH

Executive Vice President  
+1 801 869 8025  
scott.wilmarth@cbre.com

---

### NADIA LETEY

Senior Vice President  
+1 801 869 8055  
nadia.letey@cbre.com

---

### ROMAN BERNARDO

Senior Associate  
+1 801 930 6118  
roman.bernardo@cbre.com

---

### DYLAN WHITE

Senior Associate  
+1 801 869 8054  
dylan.white@cbre.com

---

# 111 EAST SEGO LILY

## nuveen

[www.cbre.com/slc](http://www.cbre.com/slc) | 111 Segó Lily, Sandy, UT 84070

The CBRE logo is positioned vertically on the right side of the page. It consists of the letters 'CBRE' in a bold, white, sans-serif font, stacked vertically.