

# Marple Medical Center

2000-2004 Sproul Road, Broomall, PA



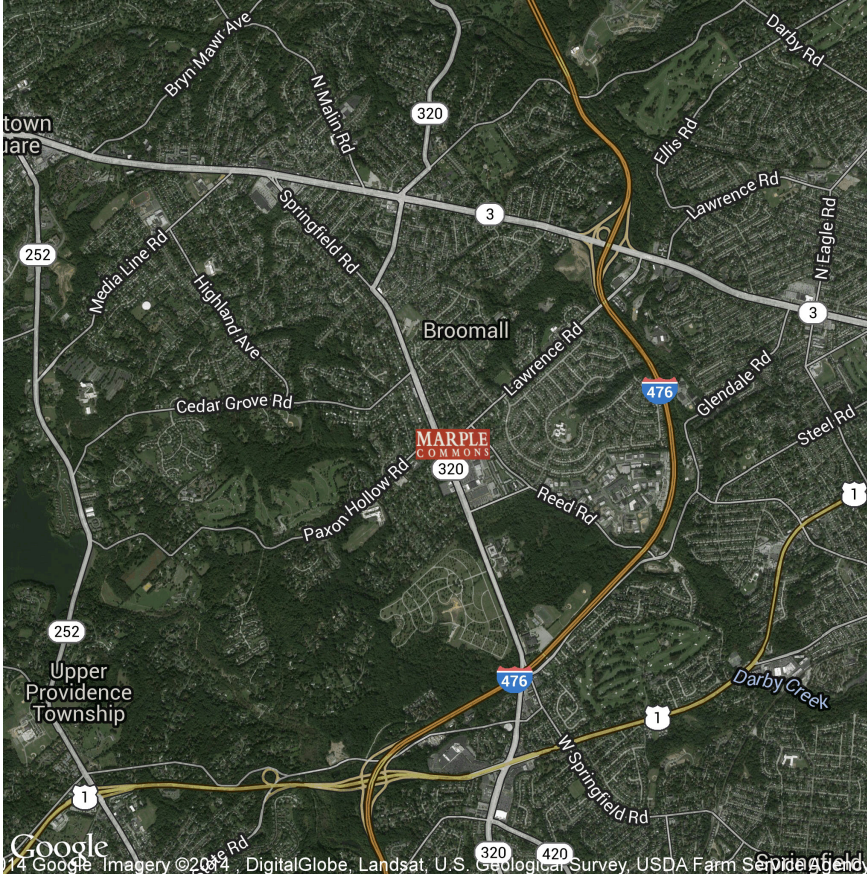
## Building Features

- + Individual controlled heat pumps and security key system
- + Ideal for Healthcare Users and Medical Professionals
- + High visibility location in Delaware County
- + Convenient to local amenities including banks, restaurants, and convenience stores
- + Located within minutes of Exit 5 of the Blue Route
- + Serviced by SEPTA bus route 112



**Monument Signage Available**

# Aerial Map



## SUITES AVAILABLE

1,574 - 4,904 RSF - SUITE 204/206  
AVAILABLE IMMEDIATELY

2,243 RSF - SUITE 200  
AVAILABLE IMMEDIATELY

## Contact Us

### Stephen Kriz

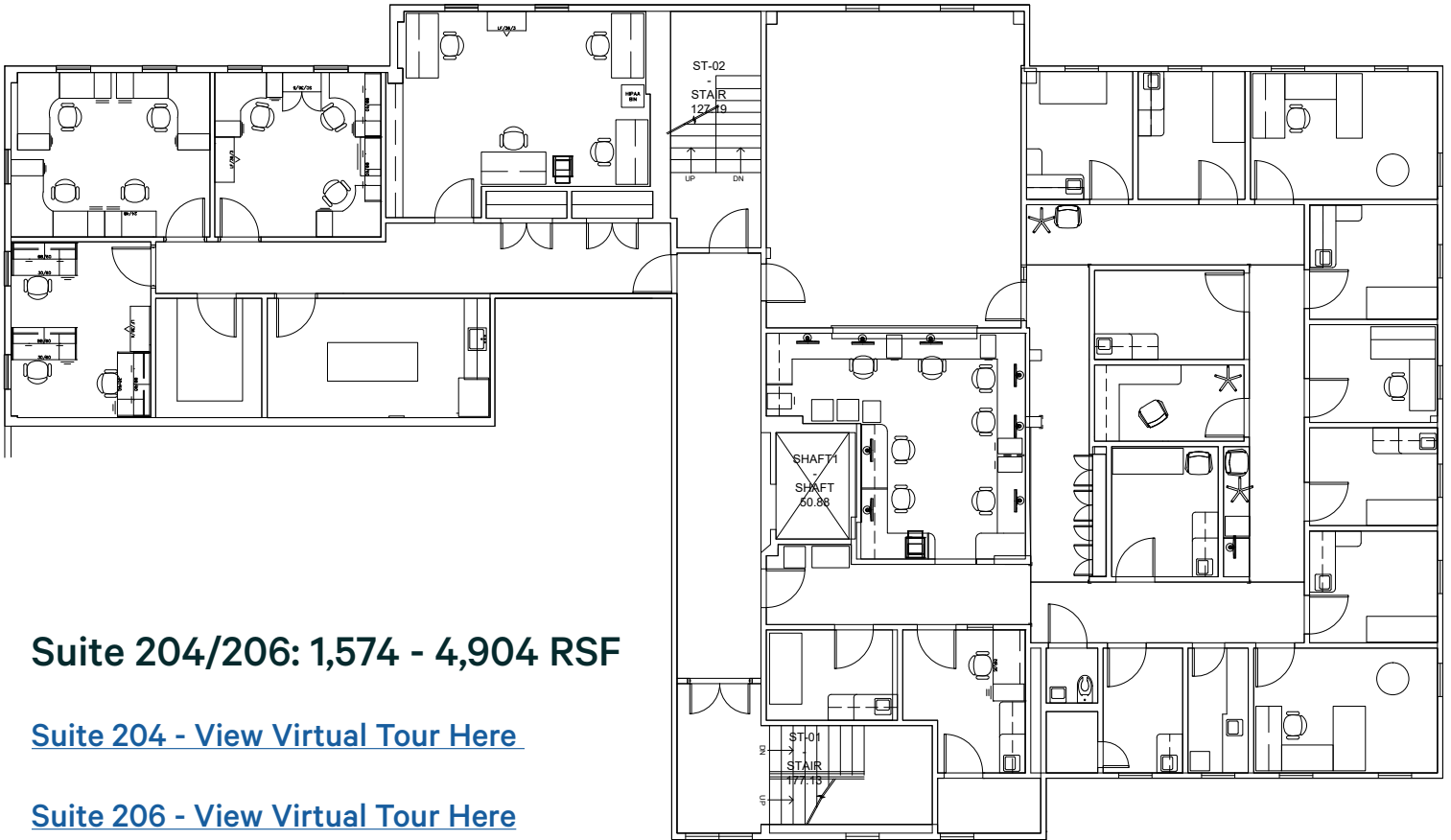
Senior Vice President  
+1 610 251 5177  
stephen.kriz@cbre.com  
Licensed: PA

### CBRE, Inc.

555 E. Lancaster Ave., Suite 120  
Radnor, PA 19087  
+1 610 251 0820  
Licensed Real Estate Broker

© 2026 CBRE, Inc. All rights reserved. This information has been obtained from sources believed reliable, but has not been verified for accuracy or completeness. You should conduct a careful, independent investigation of the property and verify all information. Any reliance on this information is solely at your own risk. CBRE and the CBRE logo are service marks of CBRE, Inc. All other marks displayed on this document are the property of their respective owners, and the use of such logos does not imply any affiliation with or endorsement of CBRE. Photos herein are the property of their respective owners. Use of these images without the express written consent of the owner is prohibited.

# Second Floor Plans



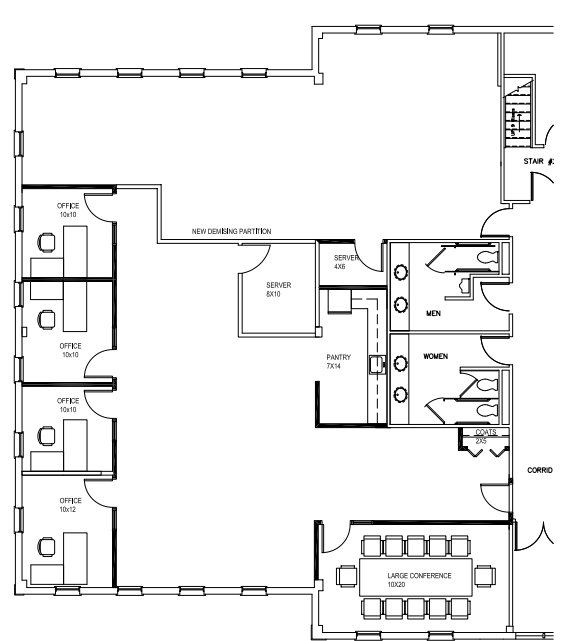
**Suite 204/206: 1,574 - 4,904 RSF**

[Suite 204 - View Virtual Tour Here](#)

[Suite 206 - View Virtual Tour Here](#)

**Suite 200: 2,243 RSF**

[Suite 200 - View Virtual Tour Here](#)



© 2026 CBRE, Inc. All rights reserved. This information has been obtained from sources believed reliable, but has not been verified for accuracy or completeness. You should conduct a careful, independent investigation of the property and verify all information. Any reliance on this information is solely at your own risk. CBRE and the CBRE logo are service marks of CBRE, Inc. All other marks displayed on this document are the property of their respective owners, and the use of such logos does not imply any affiliation with or endorsement of CBRE. Photos herein are the property of their respective owners. Use of these images without the express written consent of the owner is prohibited.

# Photos



© 2026 CBRE, Inc. All rights reserved. This information has been obtained from sources believed reliable, but has not been verified for accuracy or completeness. You should conduct a careful, independent investigation of the property and verify all information. Any reliance on this information is solely at your own risk. CBRE and the CBRE logo are service marks of CBRE, Inc. All other marks displayed on this document are the property of their respective owners, and the use of such logos does not imply any affiliation with or endorsement of CBRE. Photos herein are the property of their respective owners. Use of these images without the express written consent of the owner is prohibited.