

3900

LENNANE
DRIVE

FOR LEASE

SACRAMENTO, CA 95834

3900



TAKE THE
VIRTUAL TOUR



GPR VENTURES **CBRE**



AVAILABLE SPACE

Suite 110 ±3,694-7,864 RSF For Lease



LEASE RATE:
\$1.85/SF, FSG

PROPERTY FEATURES



- Exterior building upgrades plus lobby, restrooms & corridor renovations recently completed!



- Approximately ±7,864 RSF available



- Building/Monument signage available



- On site showers and lockers



- Surrounded by professional amenities and restaurants



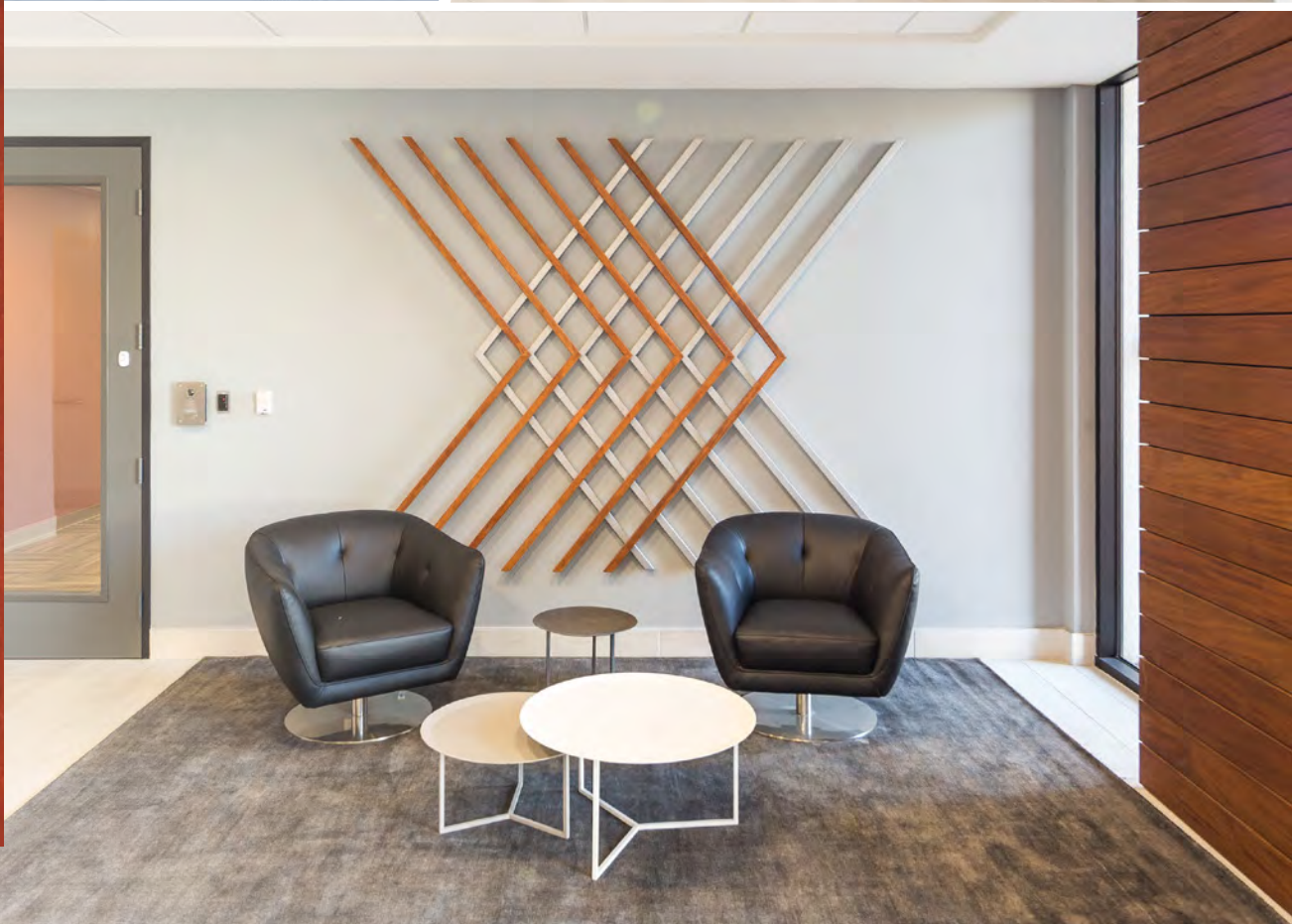
- Professionally managed by GPR Ventures

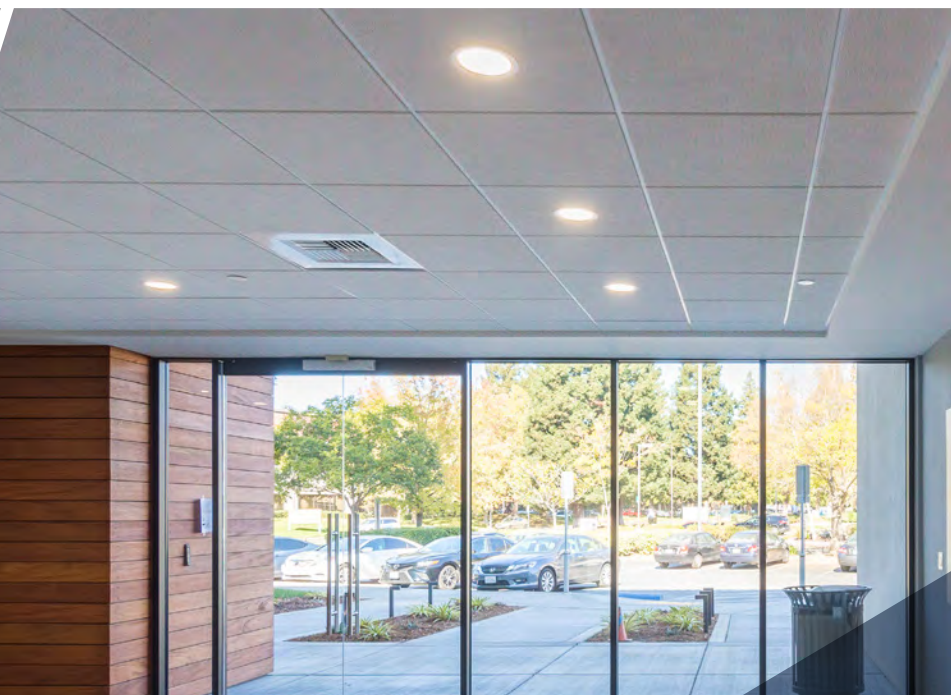
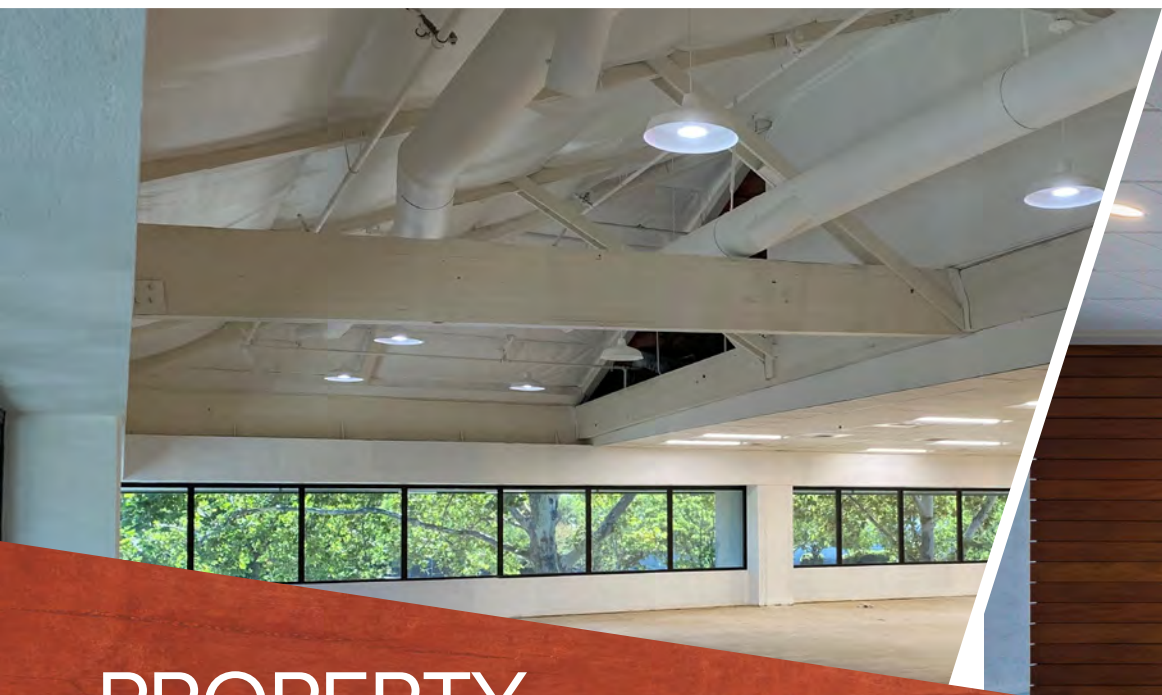


- Close proximity to Sacramento International Airport, Golden 1 Center and the CA State Capitol



- Convenient access to Highway 80 and Interstate 5





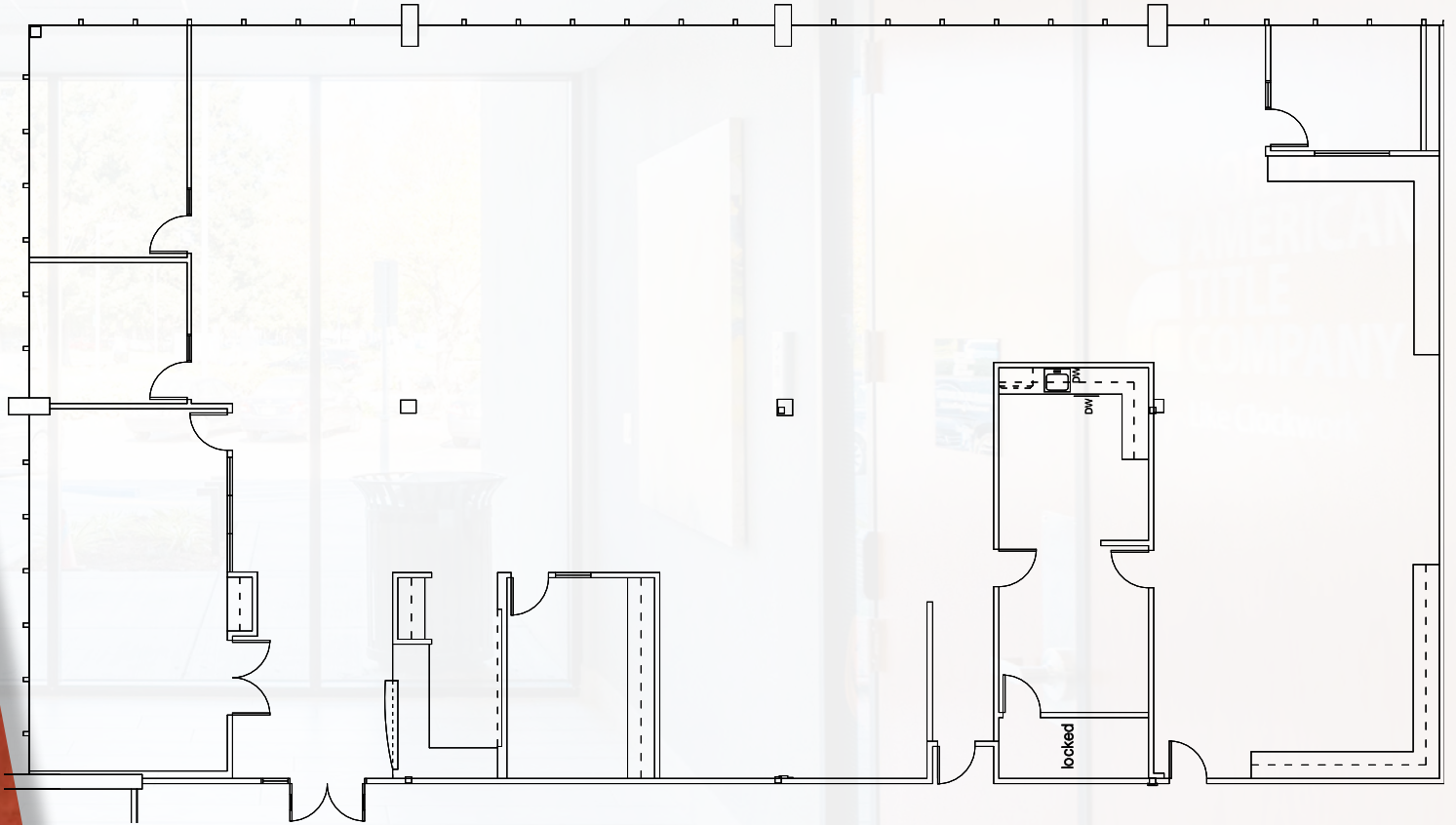
PROPERTY
PHOTOS



PROPERTY
PHOTOS

FIRST FLOOR PLAN

SUITE 110: ±7,864 RSF

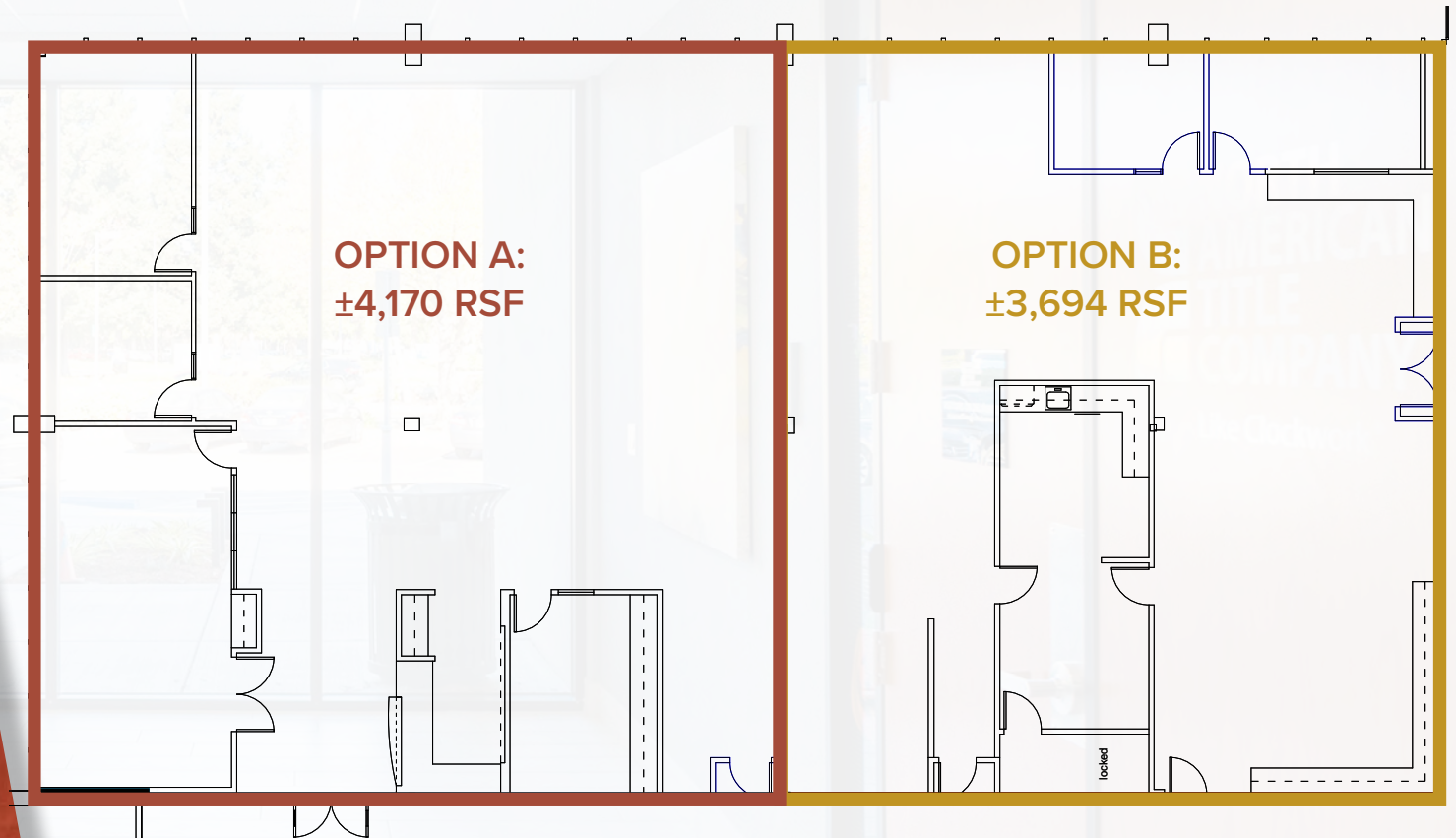


FIRST FLOOR PLAN

PROSPECTIVE DEMISE PLAN

OPTION A: $\pm 4,170$ - $7,864$ RSF

OPTION B: $\pm 3,694$ - $7,864$ RSF



3900

LENNANE
DRIVE

CONTACT:

TONY WHITTAKER

Senior Vice President

Lic. 01780828

+1 916 492 6914

tony.whittaker@cbre.com

NELLIE CRUZ

Vice President

Lic. 02086140

+1 916 492 6915

nellie.cruz@cbre.com

HAYDEN NABERS

Associate

Lic. 02231233

+1 916 446 8207

hayden.nabers@cbre.com

CBRE, INC.

500 Capitol Mall

24th Floor

Sacramento, CA 95814

www.cbre.com/sacramento



GPR VENTURES

CBRE