

FOR LEASE

1 SCRIPPS

Campus Commons Medical Plaza

SACRAMENTO, CA 95825

LEASE RATE: \$2.50/SF, FSG

TONY WHITTAKER
Senior Vice President
+1 916 492 6914
tony.whittaker@cbre.com
Lic. 01780828

NELLIE CRUZ
Vice President
+1 916 492 6915
nellie.cruz@cbre.com
Lic. 02086140

CBRE

PROPERTY HIGHLIGHTS

Sacramento's Most Recognizable Medical Address

- » Located in the Heart of Sacramento's Scripps Drive Medical Hub
- » Professional Medical Environment with Synergistic Tenant Mix
- » Sacramento's Largest Family Practice Operator (Sockolov and Sockolov) located on 2nd Floor of the Property
- » Professional Property Management
- » On-site Parking
- » Close proximity to Top Rated Restaurants and Professional Amenities
- » Close proximity to Sacramento's Prominent Residential Neighborhoods
- » Convenient Freeway Access



AVAILABILITY

SUITES	RENTABLE SQ. FT.
104	±465 RSF



COMMON AREA PHOTOS



1ST FLOOR



1ST FLOOR



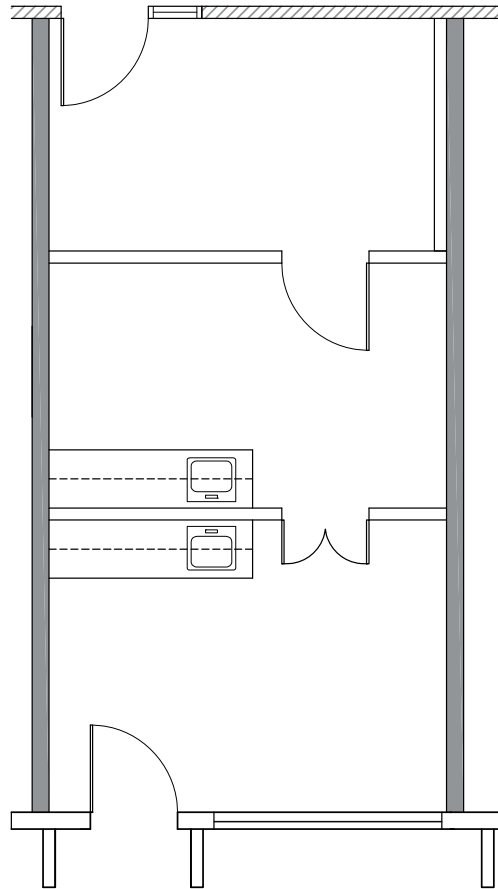
2ND FLOOR



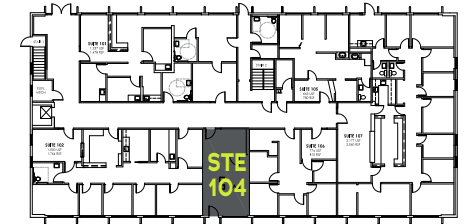
3RD FLOOR

FLOOR PLAN

SUITE 104: ±465 RSF



KEY PLAN



CONTACT US:

TONY WHITTAKER

Senior Vice President

+1 916 492 6914

tony.whittaker@cbre.com

Lic. 01780828

NELLIE CRUZ

Vice President

+1 916 492 6915

nellie.cruz@cbre.com

Lic. 02086140

FLOOR PLANS NOT TO SCALE--ALL DIMENSIONS ARE APPROXIMATE.

1 SCRIPPS

Campus Commons Medical Plaza

TONY WHITTAKER

Senior Vice President
+1 916 492 6914
tony.whittaker@cbre.com
Lic. 01780828

NELLIE CRUZ

Vice President
+1 916 492 6915
nellie.cruz@cbre.com
Lic. 02086140

© 2026 CBRE, Inc. All rights reserved. This information has been obtained from sources believed reliable, but has not been verified for accuracy or completeness. You should conduct a careful, independent investigation of the property and verify all information. Any reliance on this information is solely at your own risk. CBRE and the CBRE logo are service marks of CBRE, Inc. All other marks displayed on this document are the property of their respective owners, and the use of such logos does not imply any affiliation with or endorsement of CBRE. Photos herein are the property of their respective owners. Use of these images without the express written consent of the owner is prohibited. PMStudio_March2026



Sacramento, California

CONTACT US

CBRE