



THE OFFICES AT RIVERPARK

a **KBS** property

FOR LEASE



15809 BEAR CREEK PARKWAY | REDMOND, WA 98052

Proudly leased
and managed by

CBRE



BUILDING DETAILS

Building Size	±107,030 RSF Class A Office Building
Green Construction	LEED Silver Certified, Energy Star Rated & Verified-Healthy Building for Indoor Air
Parking	3.0/1,000 RSF of covered parking at \$75.00/stall/month
2026 Estimated Operating Expenses	\$13.95/SF
Light Rail	Walking distance to the Downtown Redmond Light Rail Station
Building Features	Tenant Amenity Center including conference facilities, bike racks and lockers



AVAILABLE SPACE

Suite 130: 2,821 RSF
Available August 1, 2026

Suite 320: 8,331 RSF
Available October 1, 2026 (or sooner)



Building Lobby

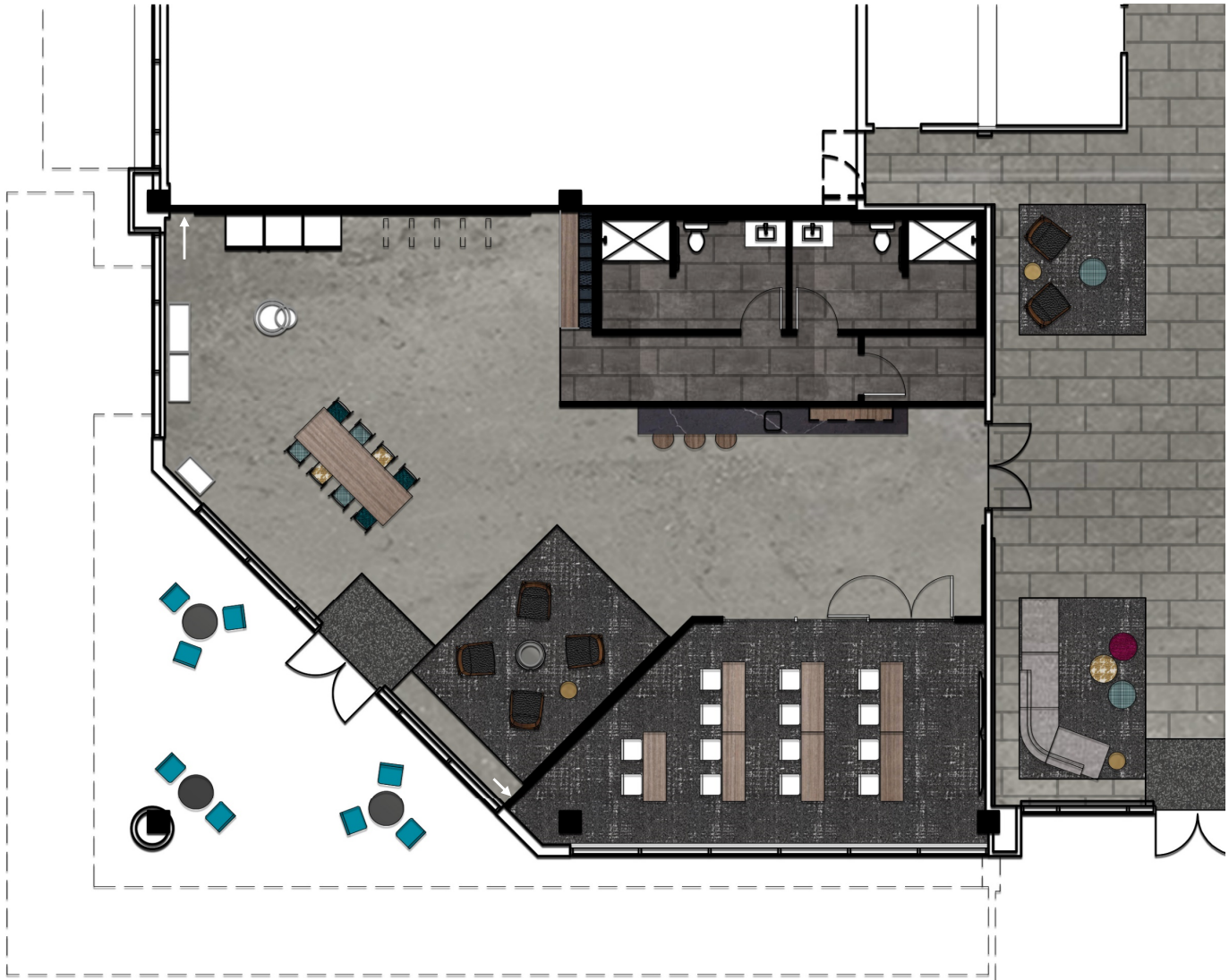
SITE DETAILS



TENANT AMENITY CENTER



VIRTUAL TOUR
AVAILABLE



AMENITY CENTER FEATURES



Conference / Training Room



Lounge Seating



Casual Meeting Spaces



Bike Racks



Coffee Bar



Lockers & Showers



Arcade Games



THE NEW REDMOND

Surrounded by housing,
entertainment opportunities
and retail amenities



Redmond Link
light rail extension



36

is the median age
in Redmond



700+

new apartment units
under construction
in downtown Redmond





THE OFFICES AT RIVERPARK

a **KBS** property

CONTACT INFO

SCOTT DAVIS

Executive Vice President

+1 425 462 6912

scott.davis@cbre.com

TIM OWENS

Senior Vice President

+1 425 462 6913

tim.owens@cbre.com

© 2026 CBRE, Inc. All rights reserved. This information has been obtained from sources believed reliable, but has not been verified for accuracy or completeness. You should conduct a careful, independent investigation of the property and verify all information. Any reliance on this information is solely at your own risk. CBRE and the CBRE logo are service marks of CBRE, Inc. All other marks displayed on this document are the property of their respective owners. Photos here in are the property of their respective owners. Use of these images without the express written consent of the owner is prohibited. BSO 5.13.26

CBRE, INC. | 929 108TH AVENUE NE | SUITE 700 | BELLEVUE, WA 98004

Proudly leased
and managed by

CBRE

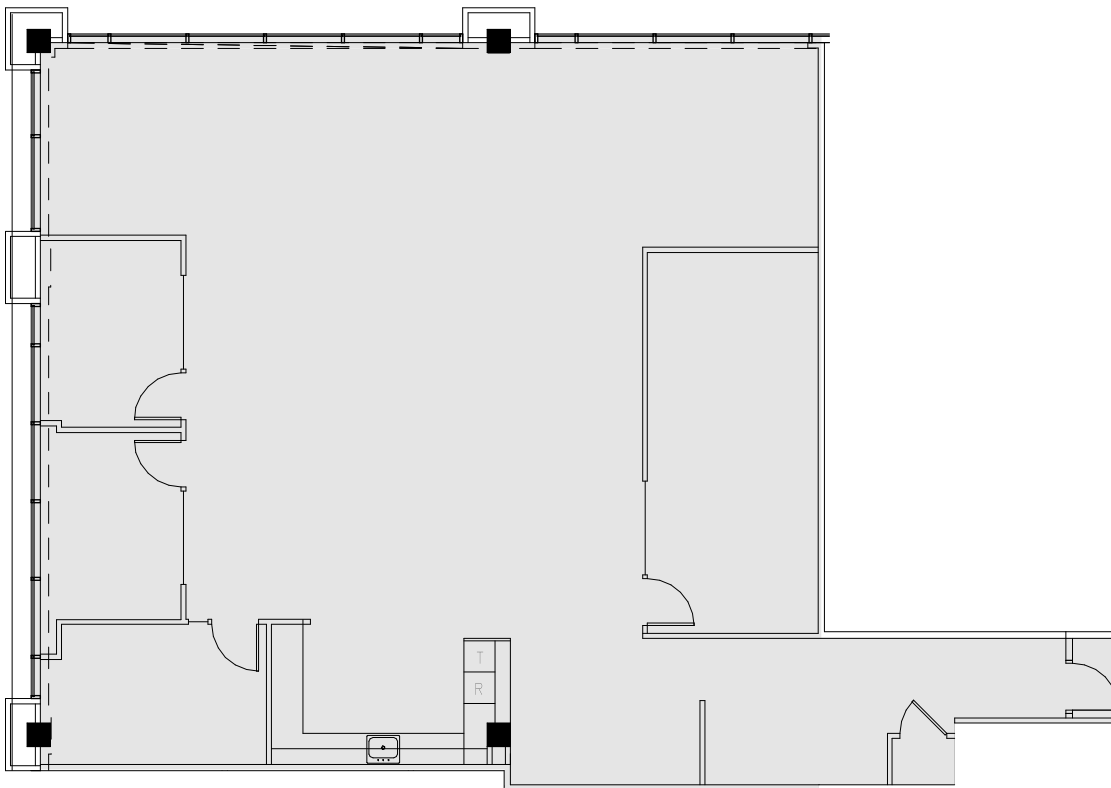
THE OFFICES AT **RIVERPARK**

a **KBS** property

15809 BEAR CREEK PARKWAY
REDMOND, WA 98052

SUITE 130 | 2,821 RSF

Available August 1, 2026



© 2026 CBRE, Inc. All rights reserved. This information has been obtained from sources believed reliable, but has not been verified for accuracy or completeness. You should conduct a careful, independent investigation of the property and verify all information. Any reliance on this information is solely at your own risk. CBRE and the CBRE logo are service marks of CBRE, Inc. All othermarks displayed onthis document are the property of their respective owners. Photos herein are the property of their respective owners. Use of these images without the express written consent of the owner is prohibited.

SCOTT DAVIS
Executive Vice President
+1 425 462 6912
scott.davis@cbre.com

TIM OWENS
Senior Vice President
+1 425 462 6913
tim.owens@cbre.com

Proudly leased
and managed by

CBRE

CBRE, INC. | 929 108TH AVENUE NE | SUITE 700 | BELLEVUE, WA 98047



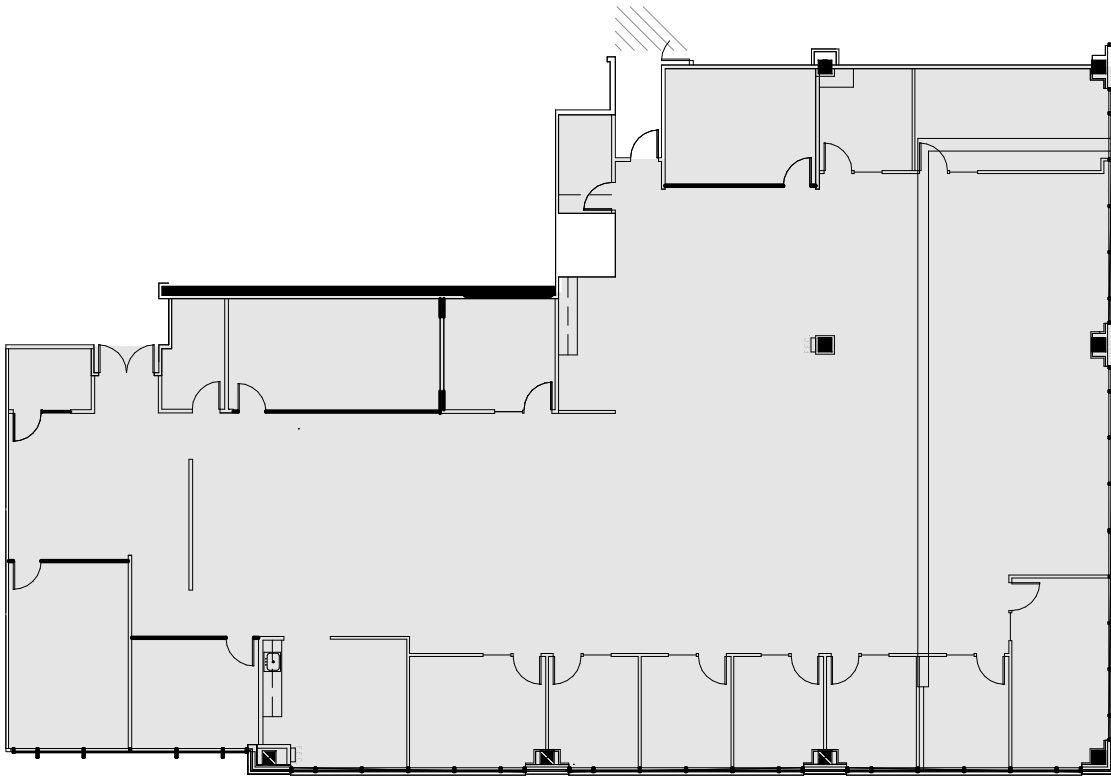
THE OFFICES AT **RIVERPARK**

a **KBS** property

15809 BEAR CREEK PARKWAY
REDMOND, WA 98052

SUITE 320 | 8,331 RSF

Available October 1, 2026 (or sooner)



© 2026 CBRE, Inc. All rights reserved. This information has been obtained from sources believed reliable, but has not been verified for accuracy or completeness. You should conduct a careful, independent investigation of the property and verify all information. Any reliance on this information is solely at your own risk. CBRE and the CBRE logo are service marks of CBRE, Inc. All other marks displayed on this document are the property of their respective owners. Photos herein are the property of their respective owners. Use of these images without the express written consent of the owner is prohibited.

SCOTT DAVIS
Executive Vice President
+1 425 462 6912
scott.davis@cbre.com

TIM OWENS
Senior Vice President
+1 425 462 6913
tim.owens@cbre.com

Proudly leased
and managed by

CBRE

CBRE, INC. | 929 108TH AVENUE NE | SUITE 700 | BELLEVUE, WA 98047

