

The Commons

9370 SW GREENBURG ROAD | TIGARD, OR 97223



FOR MORE INFORMATION CONTACT:

Brian Norton

First Vice President
+1 503 221 4871
brian.norton@cbre.com
Licensed in OR & WA

PROPERTY HIGHLIGHTS

- + Parking Ratio 3.66/1,000 SF
- + Five Buildings
- + All Common Areas Remodeled

LOCATION

- + Near Washington Square Mall
- + Active Hall, Oleson & Greenburg intersection
- + South of The Portland Clinic
- + Easy access to Highway 217

www.cbre.com/portland

THE COMMONS

9370 SW Greenburg Road | Tigard, OR 97223

Medical & Office Space | For Lease



FEATURES & AMENITIES

- + Distinctive Colonial style architecture with attractive landscaping
- + Meticulously maintained
- + Attractive Washington County taxes
- + Desirable Portland or Tigard address
- + Established medical location
- + Imaging services
- + Broad base of medical providers
- + Strong area retail services & businesses at Washington Square
- + Ample parking

GRANT BUILDING

Suite B 1,868 RSF

Suite O 2,150 RSF

Suite O space is in warm shell condition.

RATE: \$32/SF FSG

LINCOLN BUILDING

Suite 423 954 RSF

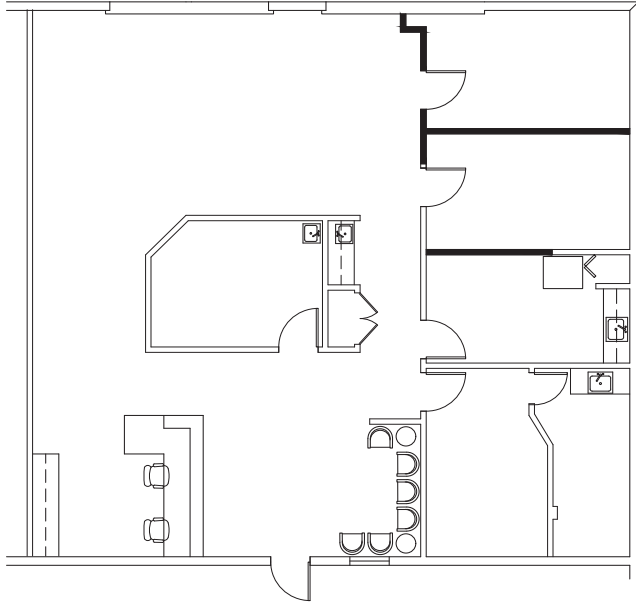
Suite is located on 2nd floor, no elevator.

RATE: \$26/SF FSG



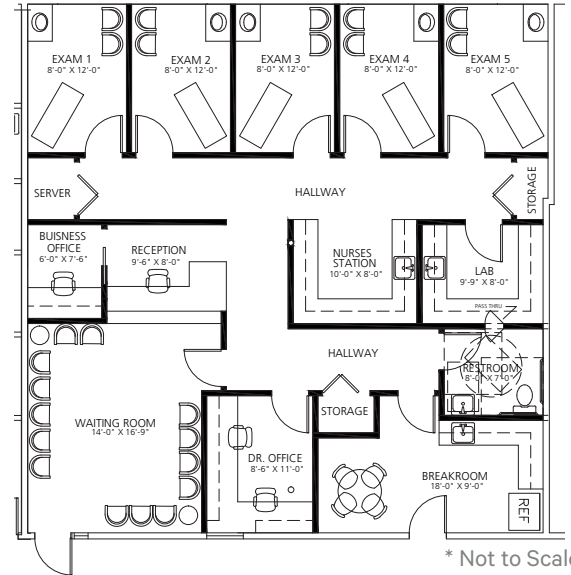
THE COMMONS

Suite B: 1,868 RSF | Grant Building



Suite O: 2,150 RSF | Grant Building

Rendering of example medical office. Space is currently in warm shell condition, design ready

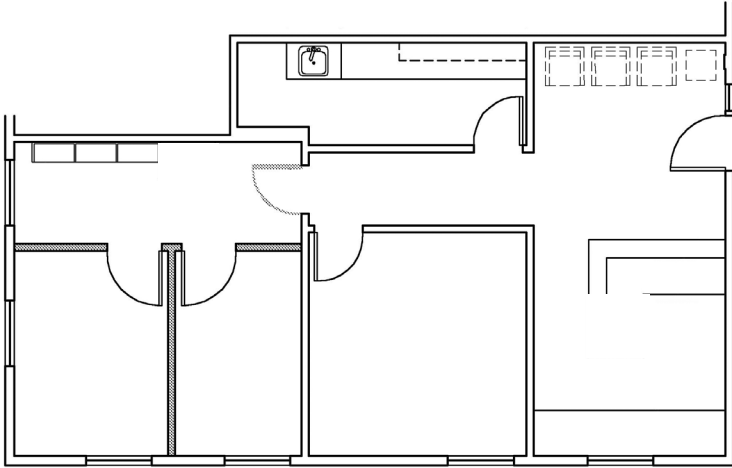


THE COMMONS

9370 SW Greenburg Road | Tigard, OR 97223

Medical & Office Space | For Lease

Suite 423: 954 RSF | Lincoln Building
Second floor space, no elevator.



* Not to Scale



CONTACT:

Brian Norton

First Vice President

+1 503 221 4871

brian.norton@cbre.com

Licensed in OR & WA

© 2026 CBRE, Inc. All rights reserved. This information has been obtained from sources believed reliable, but has not been verified for accuracy or completeness. You should conduct a careful, independent investigation of the property and verify all information. Any reliance on this information is solely at your own risk. Photos herein are the property of their respective owners. Use of these images without the express written consent of the owner is prohibited.

CBRE