

# The Commons

9370 SW GREENBURG ROAD | TIGARD, OR 97223



## FOR MORE INFORMATION CONTACT:

### Brian Norton

First Vice President  
+1 503 221 4871  
brian.norton@cbre.com  
Licensed in OR & WA

[www.cbre.com/portland](http://www.cbre.com/portland)

## PROPERTY HIGHLIGHTS

- + Parking Ratio 3.66/1,000 SF
- + Five Buildings
- + Common Area Renovations Complete

## LOCATION

- + Near Washington Square Mall
- + Active Hall, Oleson & Greenburg intersection
- + South of The Portland Clinic
- + Easy access to Highway 217

# THE COMMONS

9370 SW Greenburg Road | Tigard, OR 97223

Medical & Office Space | For Lease



## FEATURES & AMENITIES

- + Distinctive Colonial style architecture with attractive landscaping
- + Meticulously maintained
- + Attractive Washington County taxes
- + Desirable Portland or Tigard address
- + Established medical location
- + Imaging services
- + Broad base of medical providers
- + Strong area retail services & businesses at Washington Square
- + Ample parking

## GRANT BUILDING

Suite B 1,868 RSF

*Suite B is Available Now*

Suite O 2,150 RSF

*Suite O space is in warm shell condition.*

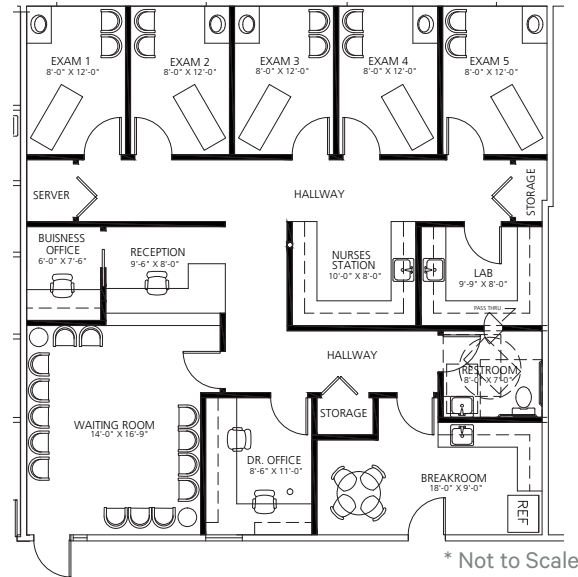
RATE: \$32/SF FSG



THE COMMONS

### Suite O: 2,150 RSF | Grant Building

Rendering of example medical office. Space is currently in warm shell condition, design ready



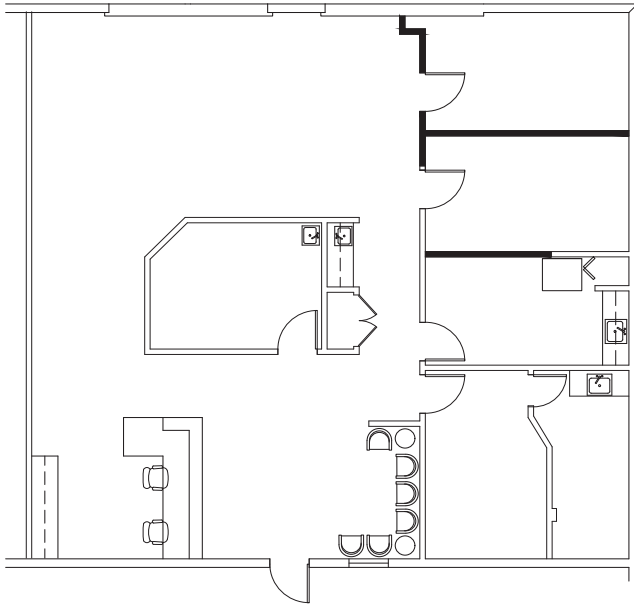
# THE COMMONS

9370 SW Greenburg Road | Tigard, OR 97223

## Medical & Office Space | For Lease

Common Area Renovations Complete

Suite B: 1,868 RSF | Grant Building



### CONTACT:

**Brian Norton**

First Vice President

+1 503 221 4871

brian.norton@cbre.com

Licensed in OR & WA

© 2026 CBRE, Inc. All rights reserved. This information has been obtained from sources believed reliable, but has not been verified for accuracy or completeness. You should conduct a careful, independent investigation of the property and verify all information. Any reliance on this information is solely at your own risk. Photos herein are the property of their respective owners. Use of these images without the express written consent of the owner is prohibited.

# CBRE