

# 21241 S WESTERN AVENUE

*Torrance, CA 90501*

**CBRE**



**FOR LEASE | TORRANCE CENTER SOUTH 2**

FOR LEASE

# OFFICE

TORRANCE CENTER SOUTH 2



**Suite 160**  
3,443 RSF



**Suite 250**  
1,352 RSF



**TERM**  
3-10 Years



**PARKING**  
3.5/1,000 SF



# FLOOR PLAN

## Suite 160

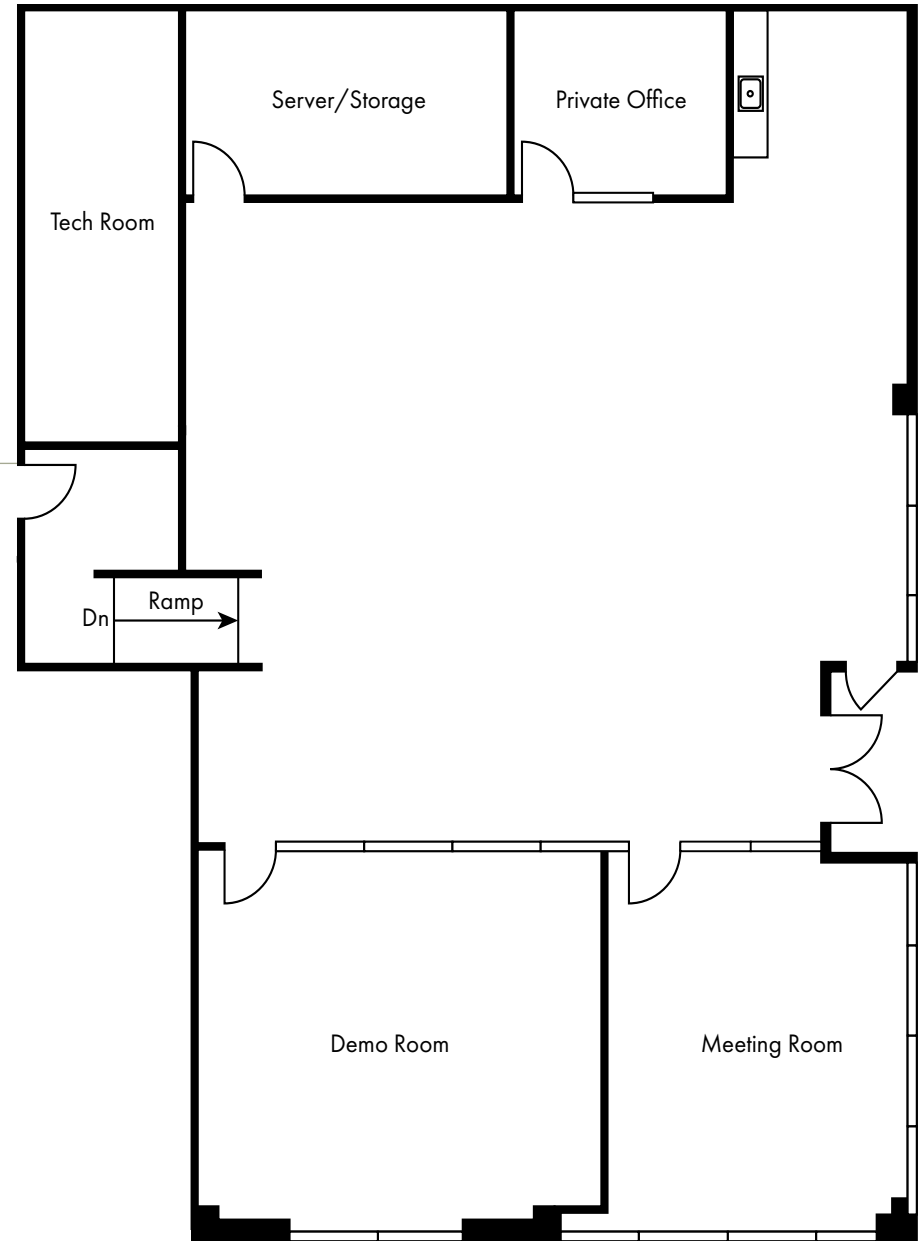
3,443 RSF



**Asking Rate:** \$2.85 PSF



**Occupancy:** Availabel Now



# FLOOR PLAN

## Suite 250

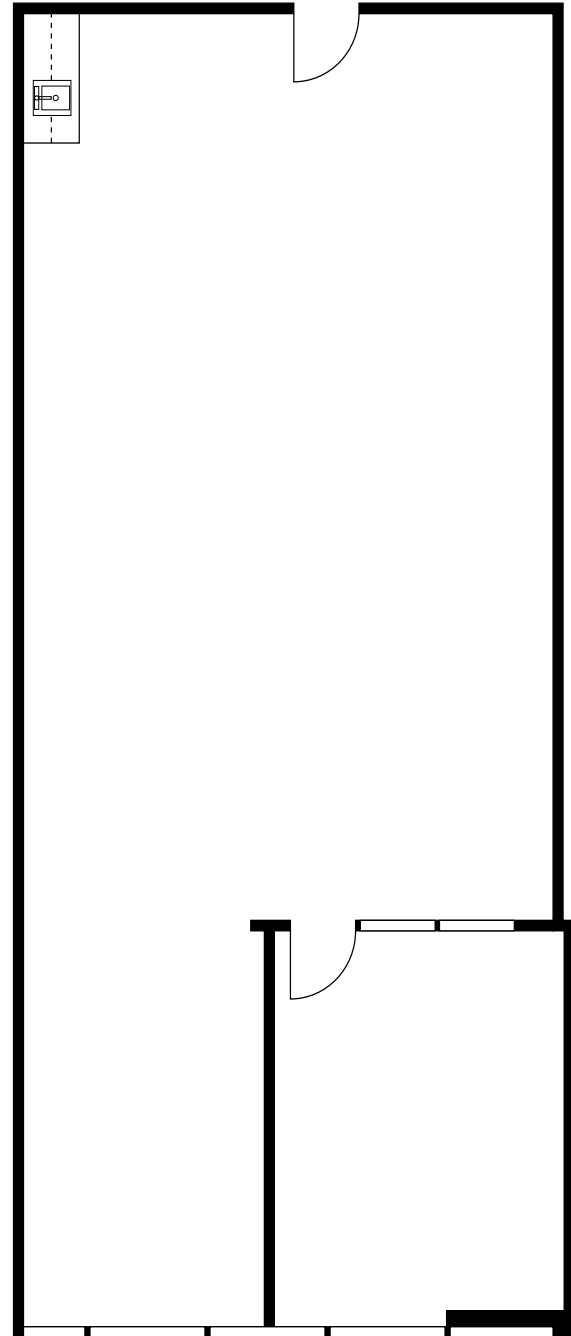
1,352 RSF



**Asking Rate:** \$2.85 PSF



**Occupancy:** Available Now



FOR LEASE

21241  
S WESTERN  
AVENUE

*Torrance, CA 90501*



## CONTACTS

### **TIM VAUGHAN**

Senior Vice President  
+1 310 363 4888  
tim.vaughan@cbre.com  
Lic.00902652

### **KENJI SAKAI**

Executive Vice President  
+1 310 363 4992  
kenji.sakai@cbre.com  
Lic.01348106

**CBRE**

© 2025 CBRE, Inc. All rights reserved. This information has been obtained from sources believed reliable but has not been verified for accuracy or completeness. CBRE, Inc. makes no guarantee, representation or warranty and accepts no responsibility or liability as to the accuracy, completeness, or reliability of the information contained herein. You should conduct a careful, independent investigation of the property and verify all information. Any reliance on this information is solely at your own risk. CBRE and the CBRE logo are service marks of CBRE, Inc. All other marks displayed on this document are the property of their respective owners, and the use of such marks does not imply any affiliation with or endorsement of CBRE. Photos herein are the property of their respective owners. Use of these images without the express written consent of the owner is prohibited.