

21241
S WESTERN
AVENUE

Torrance, CA 90501

CBRE



FOR LEASE | TORRANCE CENTER SOUTH 2

FOR LEASE

OFFICE

TORRANCE CENTER SOUTH 2



Suite 160
3,443 RSF



TERM
3-10 Years



PARKING
3.5/1,000 SF



FLOOR PLAN

Suite 160

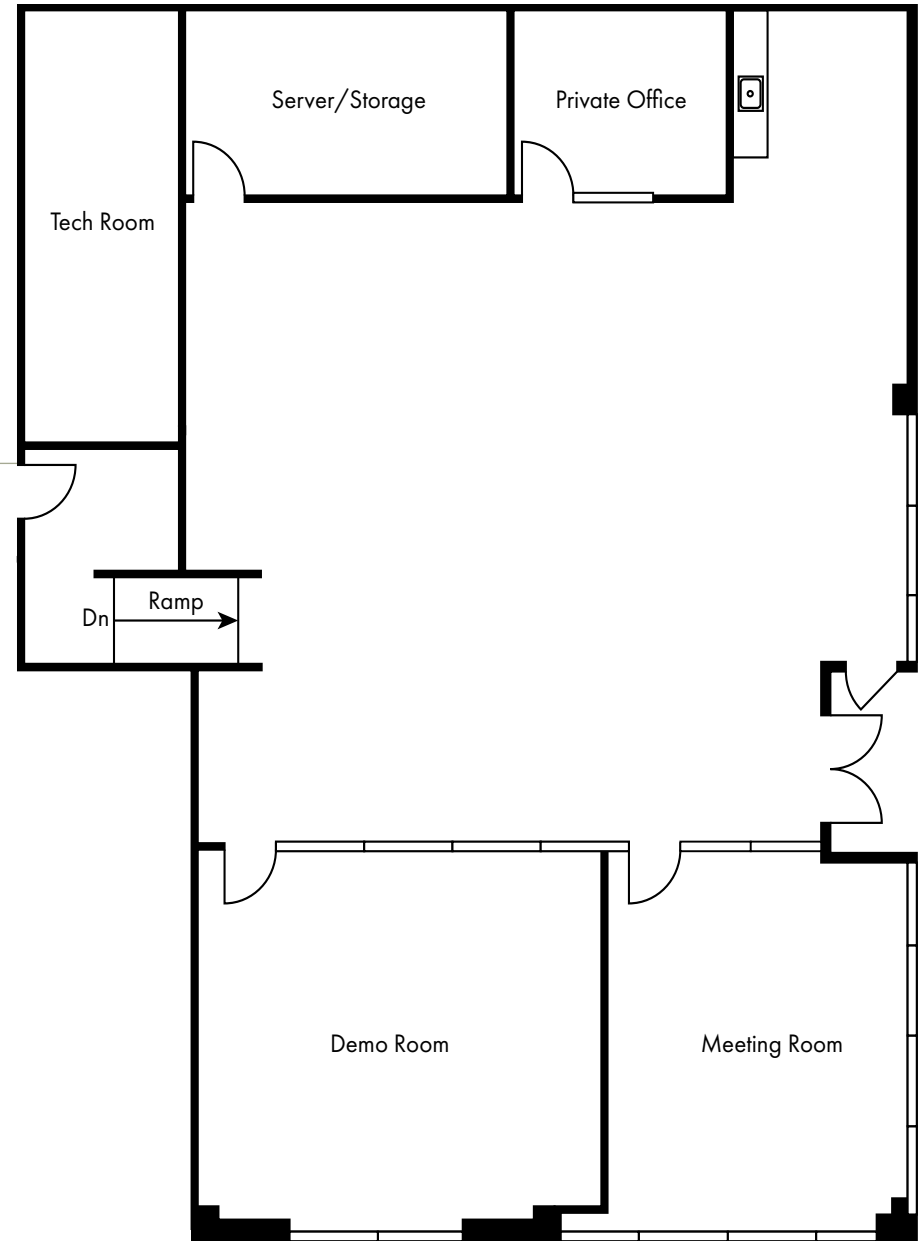
3,443 RSF



Asking Rate: \$2.85 PSF



Occupancy: Available Now



FOR LEASE

21241
S WESTERN
AVENUE

Torrance, CA 90501



CONTACTS

TIM VAUGHAN

Senior Vice President

+1 310 363 4888

tim.vaughan@cbre.com

Lic.00902652

KENJI SAKAI

Executive Vice President

+1 310 363 4992

kenji.sakai@cbre.com

Lic.01348106



© 2026 CBRE, Inc. All rights reserved. This information has been obtained from sources believed reliable but has not been verified for accuracy or completeness. CBRE, Inc. makes no guarantee, representation or warranty and accepts no responsibility or liability as to the accuracy, completeness, or reliability of the information contained herein. You should conduct a careful, independent investigation of the property and verify all information. Any reliance on this information is solely at your own risk. CBRE and the CBRE logo are service marks of CBRE, Inc. All other marks displayed on this document are the property of their respective owners, and the use of such marks does not imply any affiliation with or endorsement of CBRE. Photos herein are the property of their respective owners. Use of these images without the express written consent of the owner is prohibited.