

325 West 1700 South

Clearfield, UT 84015

Property Features

- + Building Size: 10,890 Sq. Ft.
- + Lot Size: 0.68 Acres
- + APN: 12-809-0002
- + Power: 240 Volt, 3 Phase
- + Clear Height: 14'
- + Year Built: 1997
- + Construction: Masonry Block
- + Zoning: C-2, Commercial
- + Located 0.5 Miles to I-15 On/Off Ramp
- + 0.8 Miles to Clearfield Trax Station



Contact Us

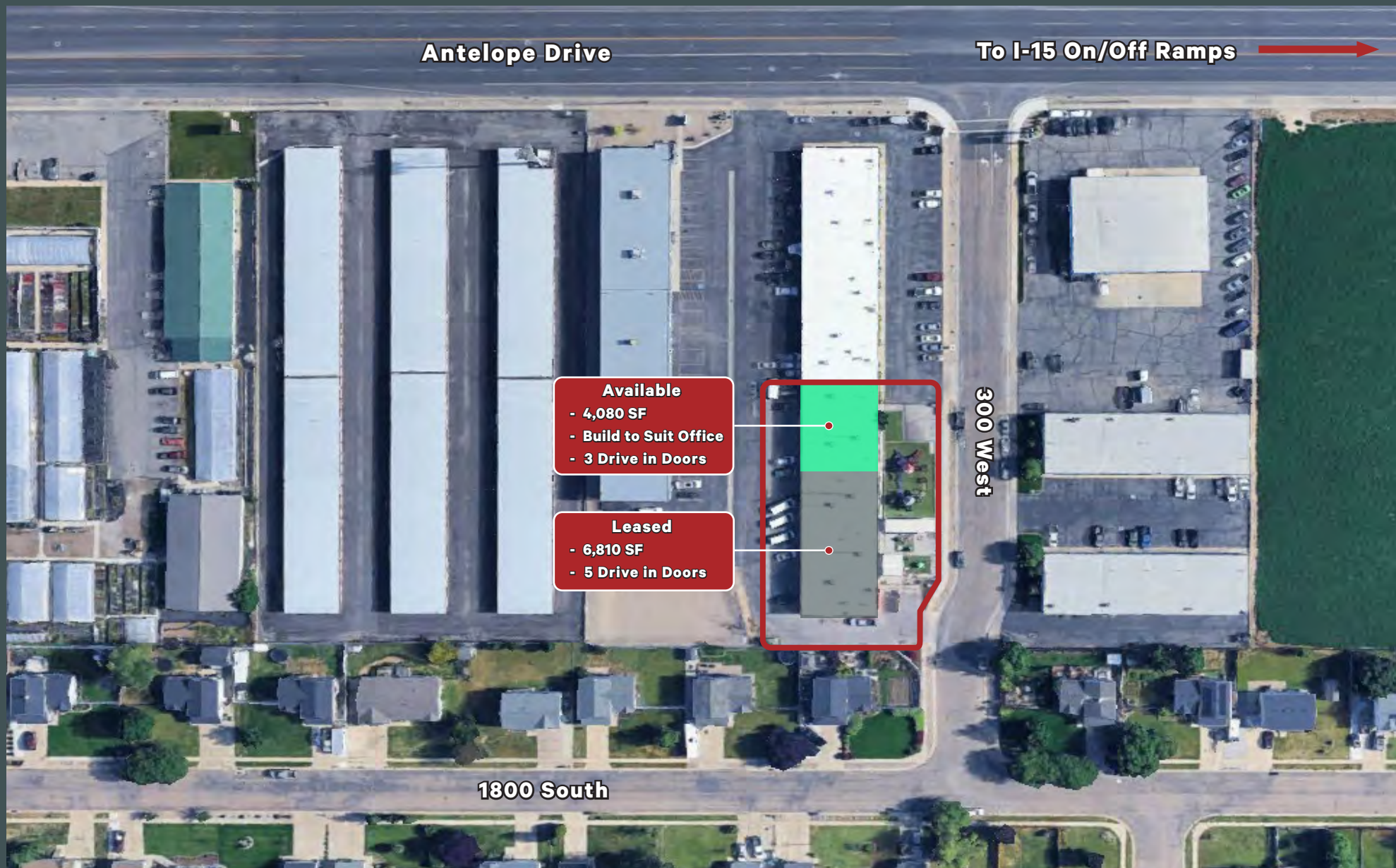
Jeff Richards
Executive Vice President
+1 801 869 8026
jeff.richards@cbre.com

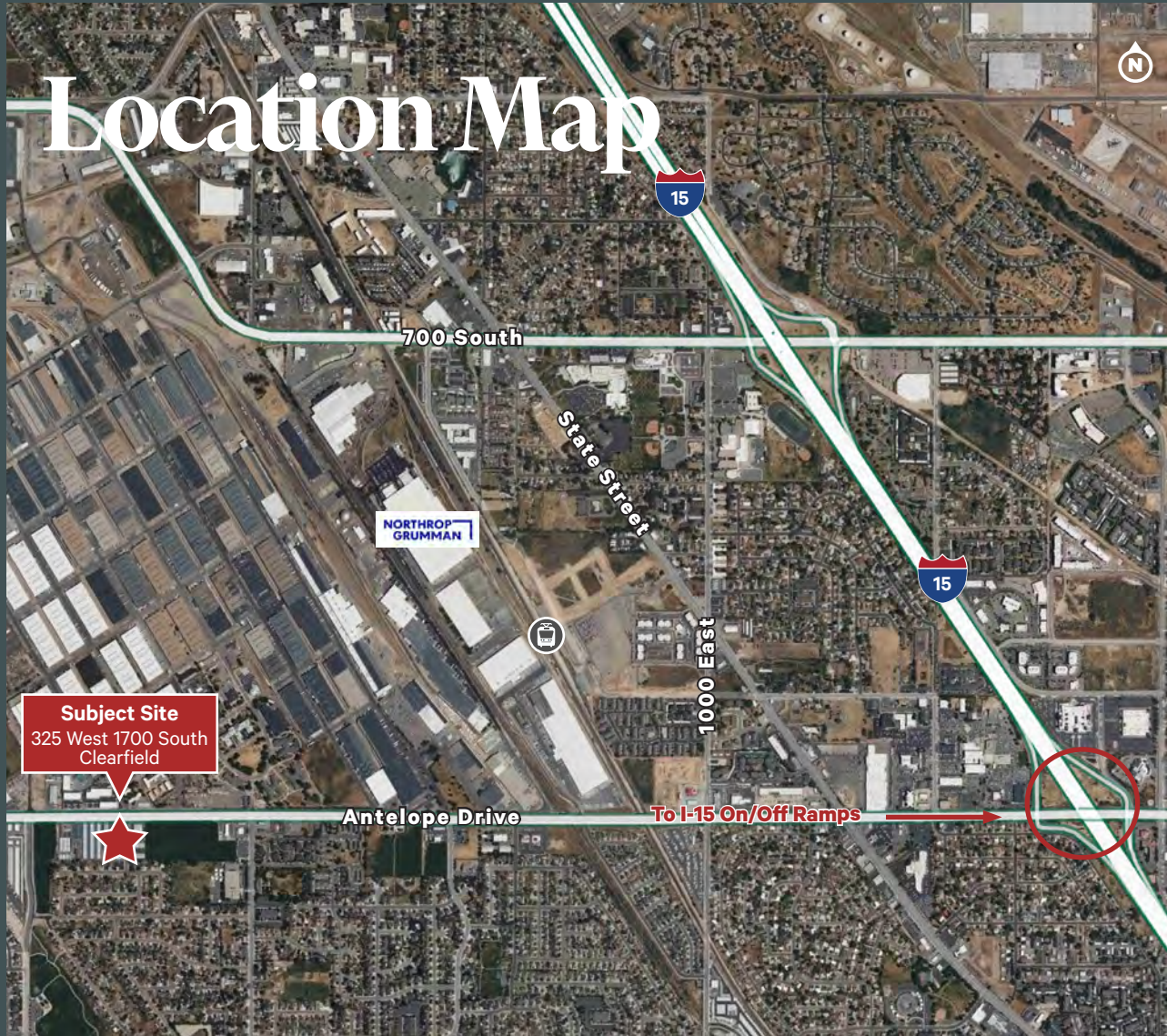
Chris Liddell
Senior Vice President
+1 801 869 8007
chris.liddell@cbre.com

Tom Dischmann
Executive Vice President
+1 801 243 9411
tom.dischmann@cbre.com

Matt McAfee
Senior Vice President
+1 801 869 8023
matt.mcafee@cbre.com

Subject Location





© 2026 CBRE, Inc. All rights reserved. This information has been obtained from sources believed reliable but has not been verified for accuracy or completeness. CBRE, Inc. makes no guarantee, representation or warranty and accepts no responsibility or liability as to the accuracy, completeness, or reliability of the information contained herein. You should conduct a careful, independent investigation of the property and verify all information. Any reliance on this information is solely at your own risk.