

# Civica Office Commons

Suite N-150

225 108th Ave NE  
Bellevue, WA 98004  
[www.cbre.com/bellevue](http://www.cbre.com/bellevue)



## Civica Office Commons

225 108th Ave NE | Bellevue, WA 98004

# For Sublease

## Sublease Information

- + Available Now
- + Plug and Play sublease opportunity with Class A finishes
- + First floor space with vaulted ceilings ideal for tech user
- + New lobby renovations coming in 2026
- + Conference/Training Center to accommodate up to 65 people
- + On-site retail including Seastar Restaurant and Raw Bar and Fonte Coffee
- + Above market parking ratio of 3.4/1,000 SF



8,121

Rentable Square Feet

10/30/31

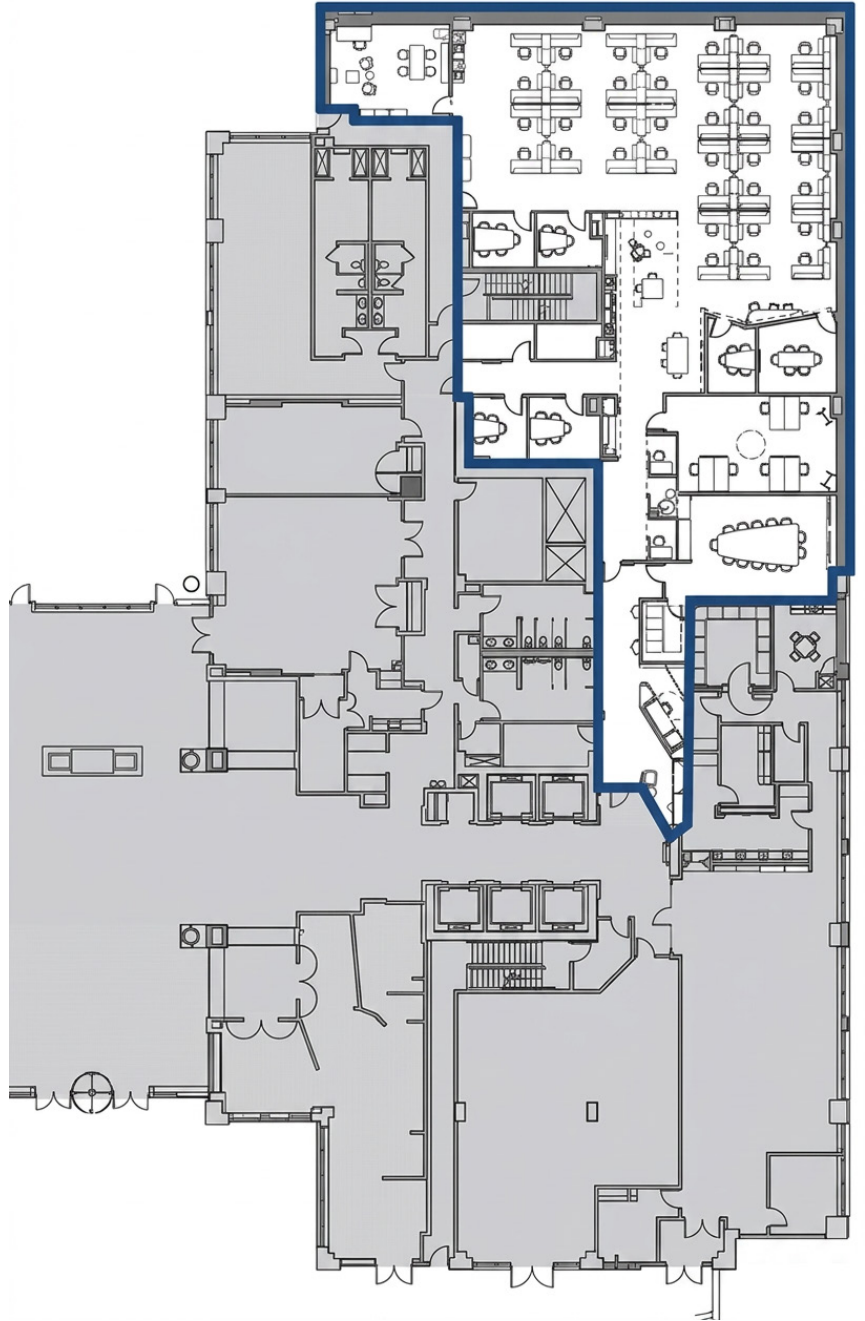
Lease Expiration Date

\$45.00/SF

Asking Rate

\$15.68/SF

NNN Estimate



15,256

Population



46,930

Daytime Population



90

Restaurants



294

Shops

LOCATED WITHIN .5 MILES

## High Ceilings



## Open Floorplan



## Phone Rooms



## Full Kitchen



# Amenity Map

**Nearby Amenities**  
**Located within one block:**

- + Seastar Restaruant & Raw Bar
- + Capelli's Barbershop
- + Bake's Place
- + Bright Horizons
- + Fonte Coffee
- + Potbelly Sandwich Shop
- + Key Bank
- + The Melting Pot
- + AC Lounge
- + Caffe Ladro
- + Cafe Pogacha
- + FOB Poke Bar
- + Chay Concept
- + L'Experience Paris
- + New York Cafe
- + Mendocino Farms
- + Haidilao Hot Pot

## Contact Us

**Lennon Atteberry**  
Senior Vice President  
+1 425 941 7633  
lennon.atteberry@cbre.com

**CBRE, Inc.**  
929 108th Ave NE  
Suite 700  
Bellevue, WA 98004

© 2026 CBRE, Inc. All rights reserved. This information has been obtained from sources believed reliable, but has not been verified for accuracy or completeness. You should conduct a careful, independent investigation of the property and verify all information. Any reliance on this information is solely at your own risk. CBRE and the CBRE logo are service marks of CBRE, Inc. All other marks displayed on this document are the property of their respective owners, and the use of such logos does not imply any affiliation with or endorsement of CBRE. Photos herein are the property of their respective owners. Use of these images without the express written consent of the owner is prohibited.