



1 FirstBank

1 FirstBank

OCEAN BANK

# 848 BRICKELL SUBLEASE

848 Brickell Ave, Miami FL 33131

**CBRE**

# PROPERTY HIGHLIGHTS

*Address*

848 Brickell Ave  
Miami FL 33131

*Size*

2,180 SF

*Term*

August 2027

*Suite*

Penthouse 1

*Asking Rate*

\$16,500/mo  
Gross

*Parking*

1.31/1,000 SF

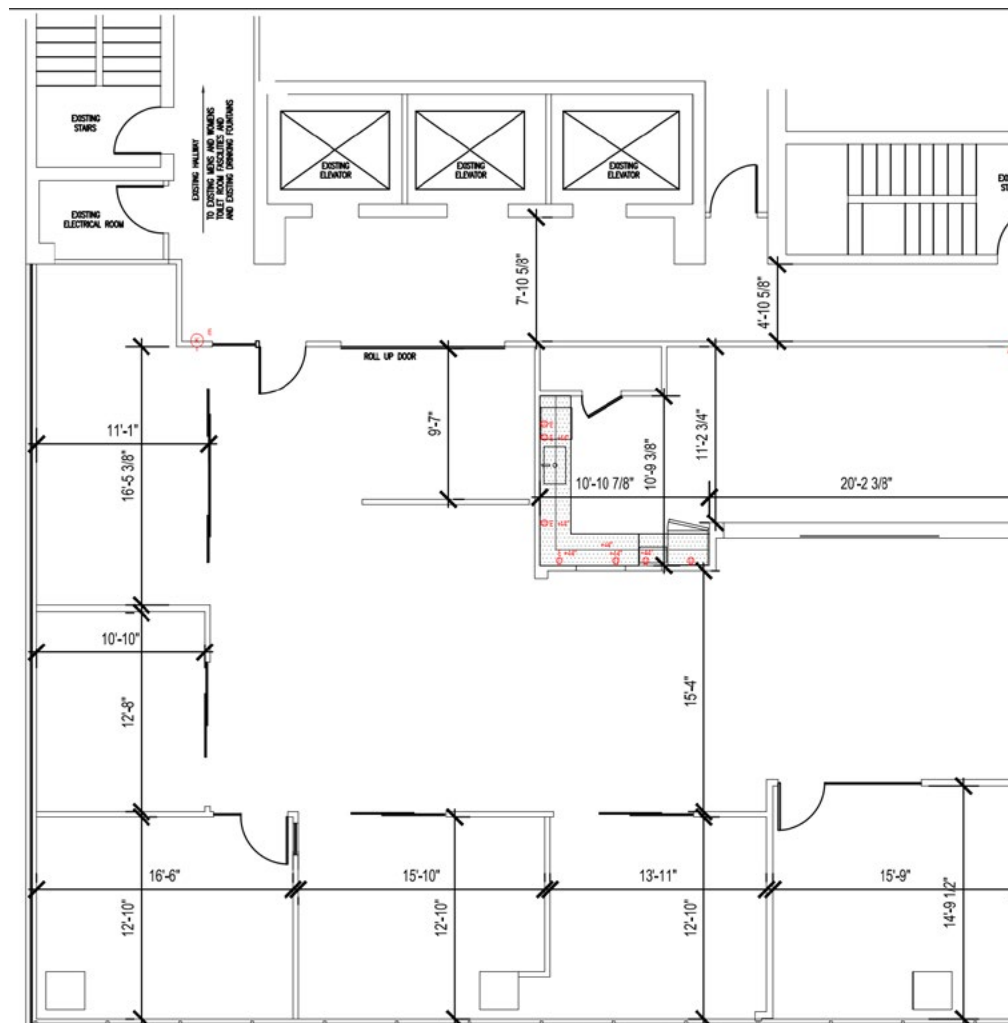
The image shows the exterior of a modern building at 848 Brickell. A large sign above the entrance reads "848 BRICKELL". Below the sign is an outdoor dining area with several tables and chairs. People are seated at the tables, and there are potted plants and a white decorative fence in the foreground. The building has a glass facade and a curved architectural design.

848 BRICKELL

# PENTHOUSE 1

## 2,180 SF

VIEW PH1



848 Brickell Ave, Miami FL 33131



**DESIGNATED  
CONFERENCE ROOM  
AND WAITING AREA**



**OPEN CONCEPT FLOOR PLAN**



**4 INDIVIDUAL  
OFFICES**

## For More Information

---

**Cameron Tallon**

+1 407 284 7455

[cameron.tallon@cbre.com](mailto:cameron.tallon@cbre.com)

**CBRE**

© 2026 CBRE, Inc. This information has been obtained from sources believed reliable. We have not verified it and make no guarantee, warranty or representation about it. Any projections, opinions, assumptions or estimates used are for example only and do not represent the current or future performance of the property. You and your advisors should conduct a careful, independent investigation of the property to determine to your satisfaction the suitability of the property for your needs. CBRE and the CBRE logo are service marks of CBRE, Inc. and/or its affiliated or related companies in the United States and other countries. All other marks displayed on this document are the property of their respective owners.