

SILVER SPRING

METRO PLAZA

SILVER SPRING METRO PLAZA OFFERS IT ALL.
ENJOY A WIDE RANGE OF SPACE AND BRAND NEW
AMENITIES, ALL AT A GREAT LOCATION ON METRO.



CBRE



LOCATION & ACCESS

DINING

All Set Restaurant & Bar
 Baja Fresh
 Ben & Jerry's
 Cold Stone Creamery
 Crisp & Juicy

Dunkin' Donuts
 Einstein Brothers Bagels
 Fuddruckers
 Lebanese Taverna
 Mamma Lucia
 Nando's Peri-Peri

Panera Bread
 Potbelly
 Quizno's
 Red Lobster
 Ruby Tuesdays
 Silver Branch Brewing Co.
 Smoothie King
 Starbucks
 Sushi Jin
 SweetGreen
 zpizza

ENTERTAINMENT

The Fillmore
 Regal Cinemas
 AFI Silver

RETAIL

CVS
 DSW
 FedEx
 Giant
 Hour Eyes
 M&T Bank

Marshalls
 Michaels
 MyEyeDr.
 Rite Aid
 Safeway
 Strosniders
 Suntrust Bank
 ULTA
 UPS
 US Post Office
 Verizon Wireless
 Whole Foods

FITNESS

Orangetheory
 Pure Barre
 LA Fitness
 Gold's Gym

AMENITY HIGHLIGHTS



BUILDING HIGHLIGHTS & AMENITIES

- Direct access to Silver Spring Metro, MARC trains and adjacent to Silver Spring Transit Plaza
- On-site retailers include Dunkin' Donuts, Silver Branch Brewing Co., 9Round, Little Home Deli
- Short walk to Silver Spring Town Center
- Tenant fitness center with Peloton bikes and full-service locker room
- Secure bike room
- Multiple EV charging stations
- Underground parking
- Dedicated, on-site property management
- New modern plaza just delivered
- Tenant lounge/conference center





The Deck

AT SILVER SPRING METRO





SILVERSPRING
METRO PLAZA

AVAILABILITIES



NIEL BEGGY

niel.beggy@cbre.com
+1 301 215 4105

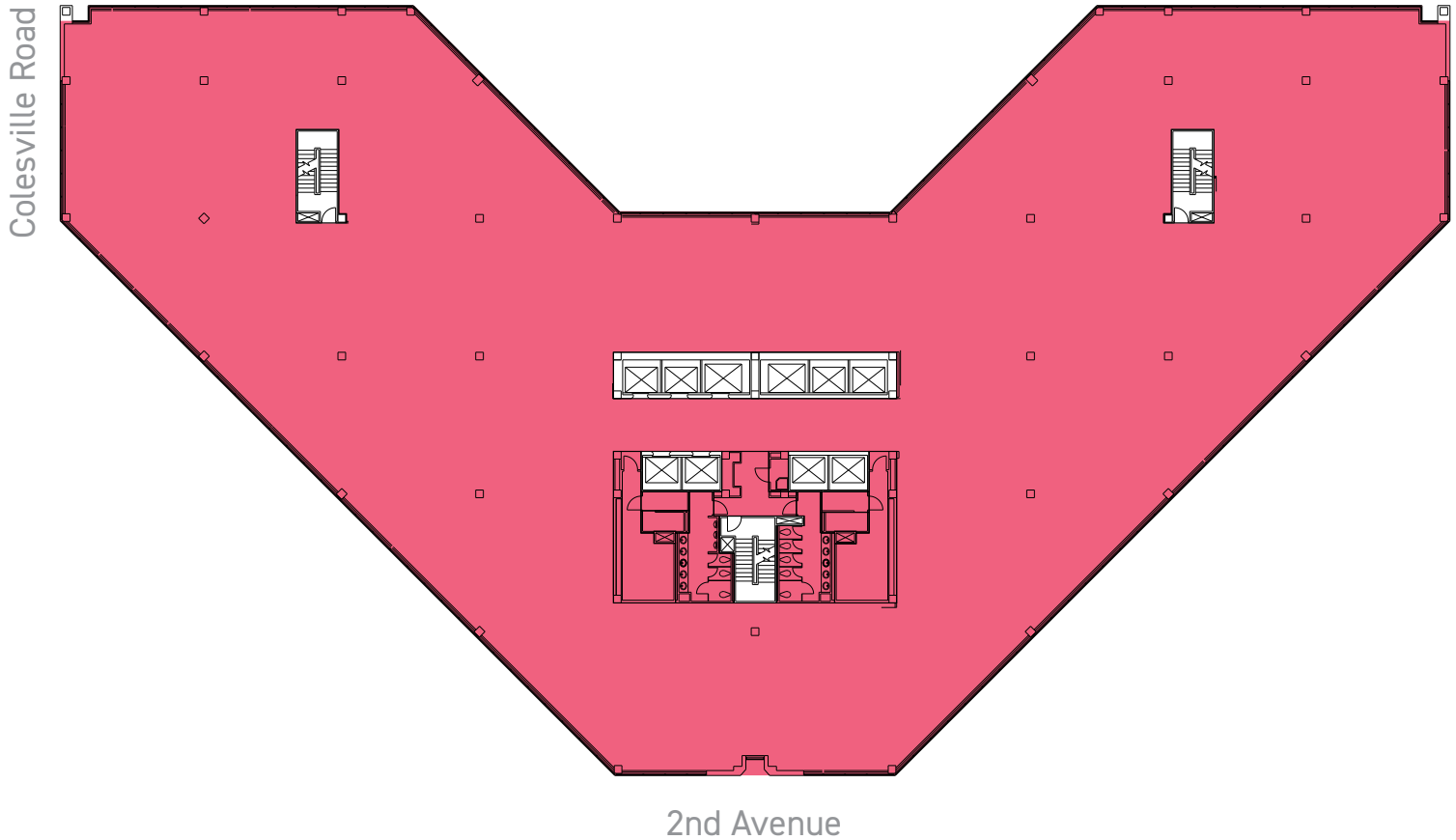
BRIAN MCCARTHY

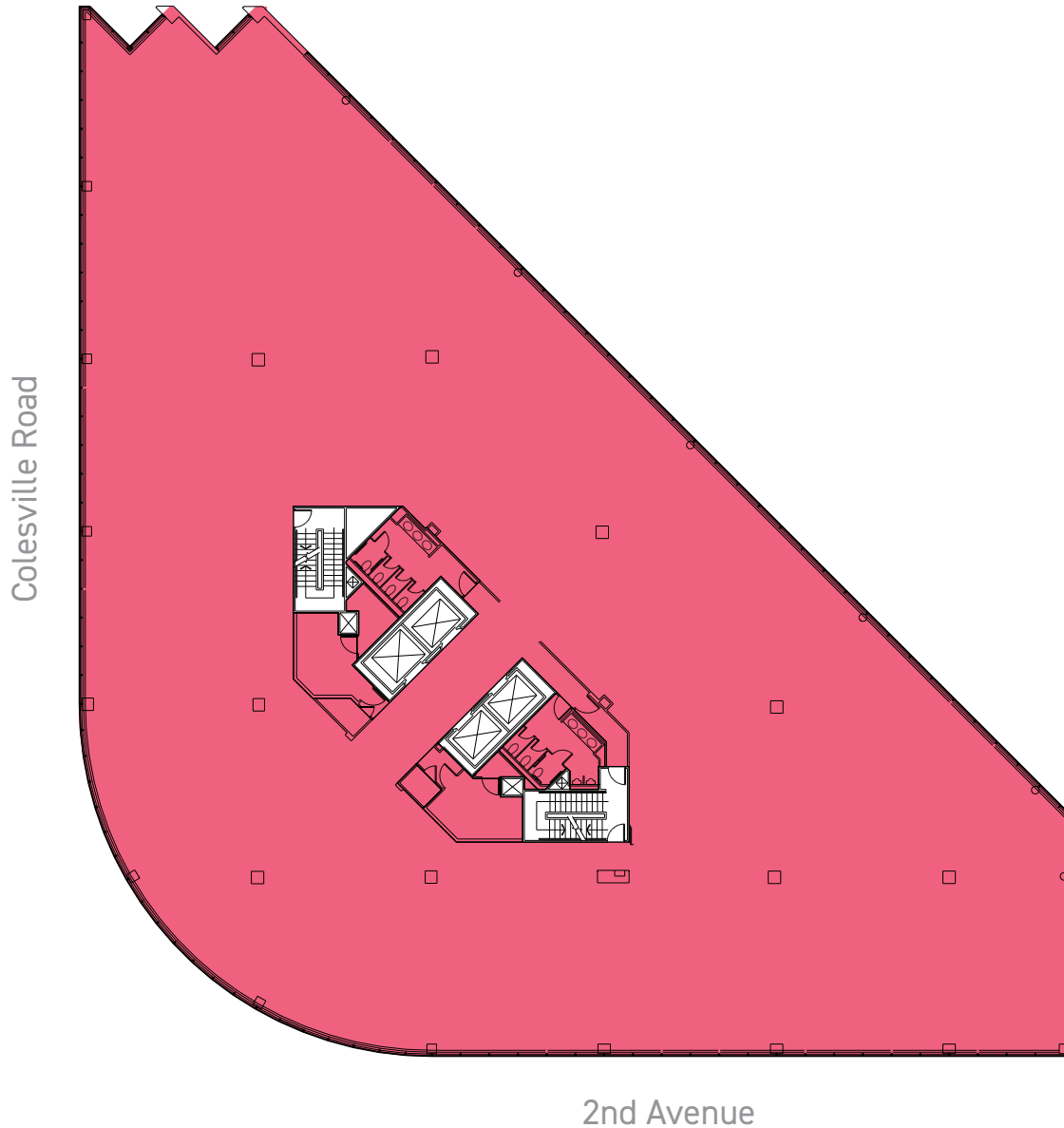
brian.mccarthy@cbre.com
+1 301 215 4121

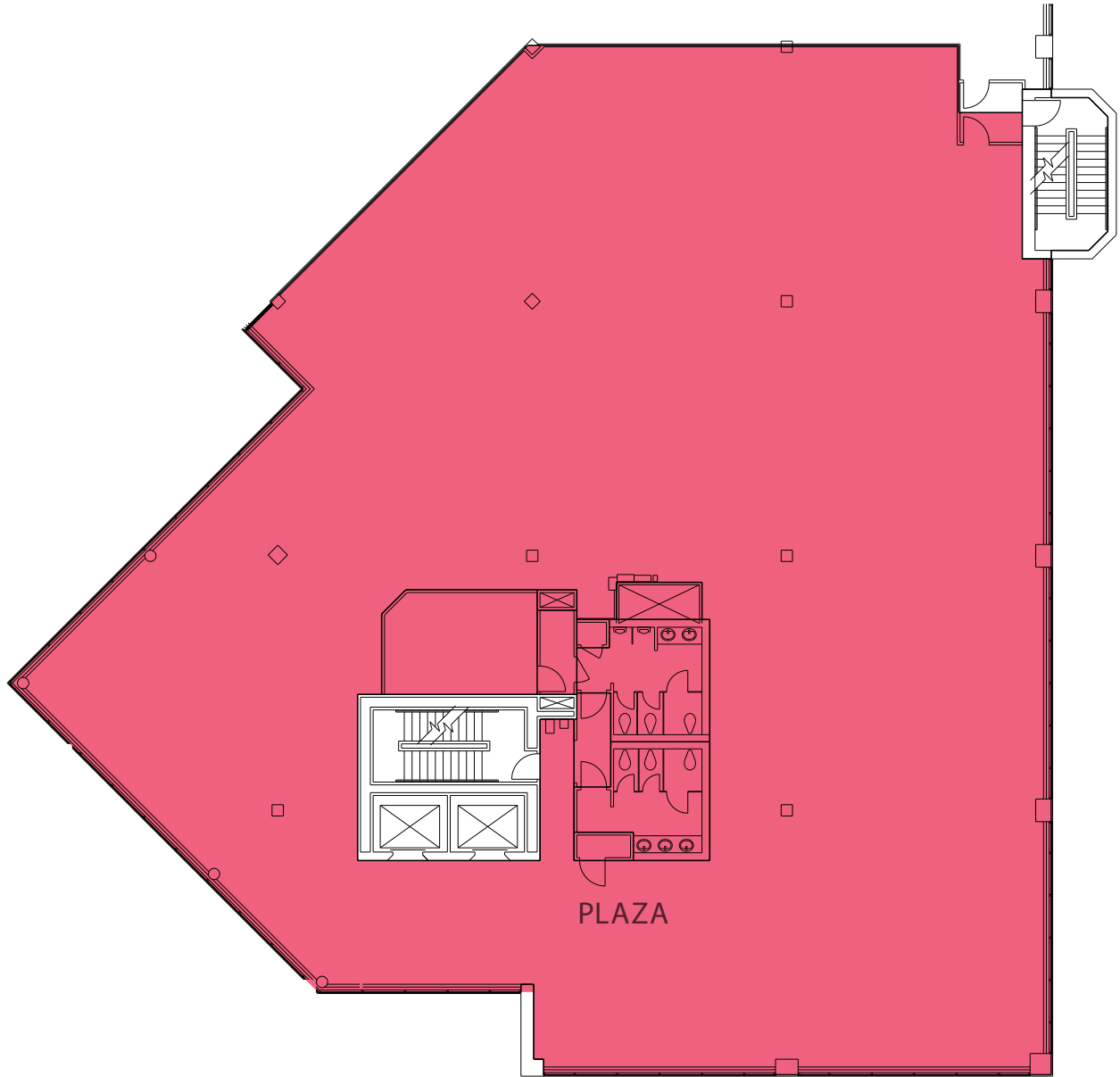
TIM CONNOLLY

tim.connolly@cbre.com
+1 301 215 4122

CBRE







2nd Avenue

NIEL BEGGY

niel.beggy@cbre.com
+1 301 215 4105

BRIAN MCCARTHY

brian.mccarthy@cbre.com
+1 301 215 4121

TIM CONNOLLY

tim.connolly@cbre.com
+1 301 215 4122

SILVERSPRING

METRO PLAZA

NIEL BEGGY
niel.beggy@cbre.com
+1 301 215 4105

BRIAN MCCARTHY
brian.mccarthy@cbre.com
+1 301 215 4121

TIM CONNOLLY
tim.connolly@cbre.com
+1 301 215 4122

CBRE