

# ±126,000 SF Available

5502 Highway 25 N  
Hodges, SC 29653  
Site #2617

Contact broker for pricing



## Contact Us

**Marcus Cornelius, SIOR**  
Senior Vice President  
+1 864 527 6081  
marcus.cornelius@cbre.com

**Campbell Lewis, SIOR**  
Senior Vice President  
+1 864 527 6041  
campbell.lewis@cbre.com

**Catherine Phillips**  
Associate  
+1 803 650 8145  
catherine.phillips@cbre.com

5502 Highway 25 N

Hodges, SC 29653

For Sale

# Property Details

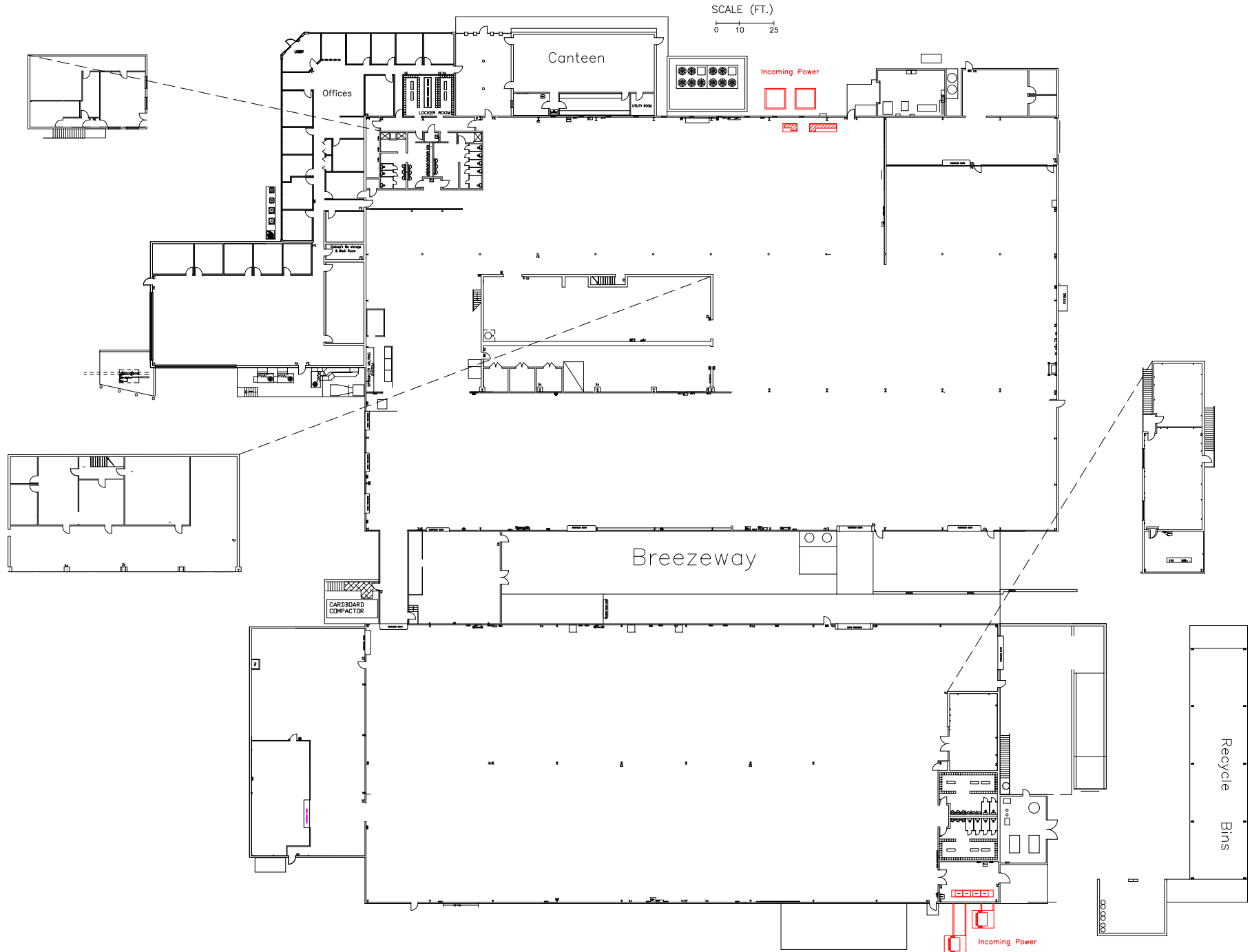
- + Building Size: ±126,000 SF
- + Office Space: ±15,770 SF
- + Land Area: 11.56 AC
- + Year Built: 1993
- + Dock Doors: 4
- + Drive-In Doors: 3
- + Clear Height: 22' - 30'
- + Auto Parking: 234
- + Construction: Tilt wall and metal
- + Sprinkler: Ordinary Hazard
- + HVAC: 100%
- + Greenwood County | Parcel ID #6930-118-548
- + Utilities:
  - Water: Ware Shoals
  - Sewer: Ware Shoals
  - Gas: CPW
  - Electric: Duke Energy
- + Power:
  - Upper Plant:
    - (1) 2000kva transformer & (1) 1000kva transformer
    - (1) 2000 amp Switch Gear & (1) 3000 amp Switch Gear
  - Lower Plant:
    - (2) 1500kva transformers
    - (2) 3000 amp Switch Gears



5502 Highway 25 N

Hodges, SC 29653

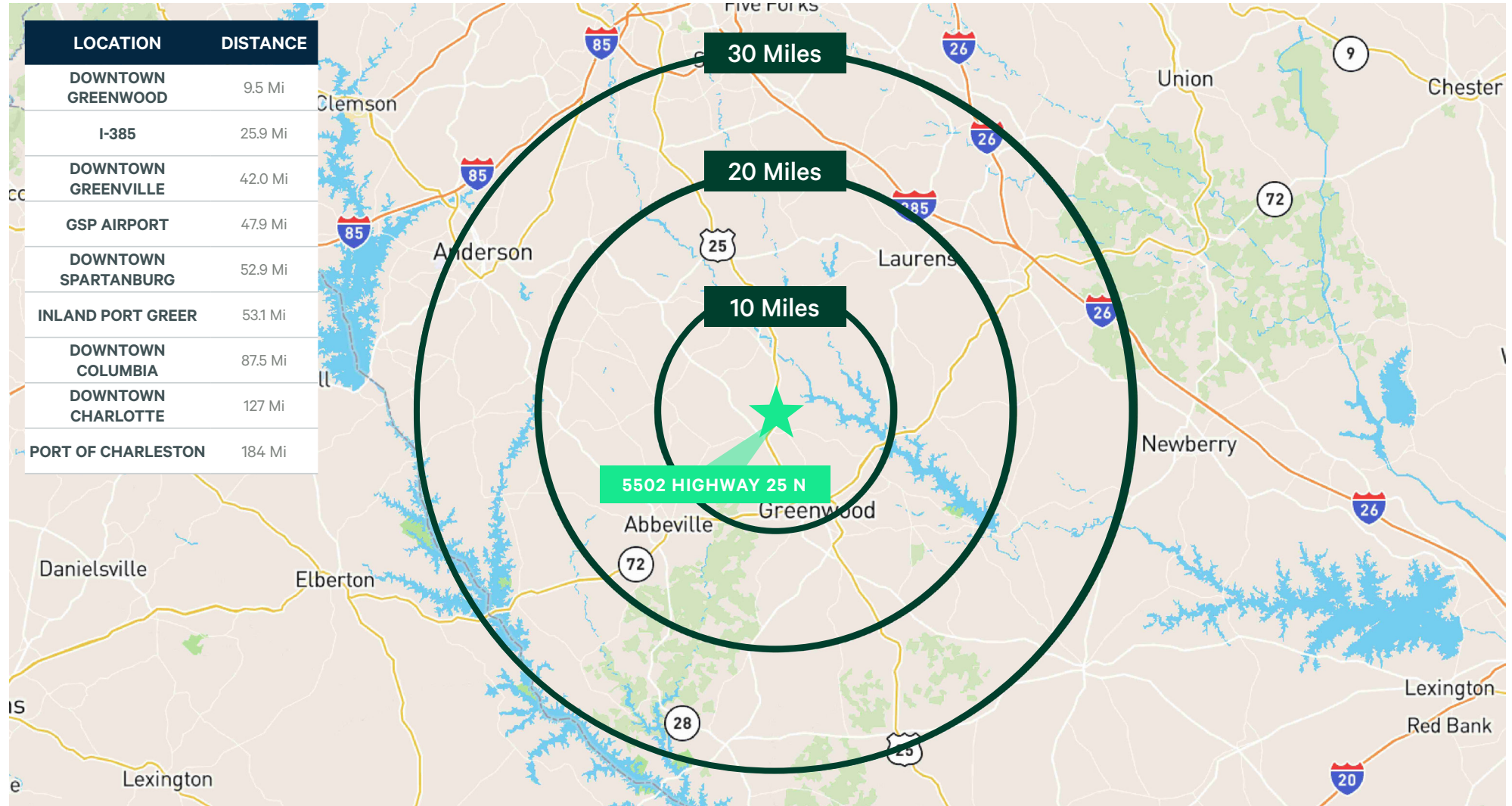
For Sale



# 5502 Highway 25 N

Hodges, SC 29653

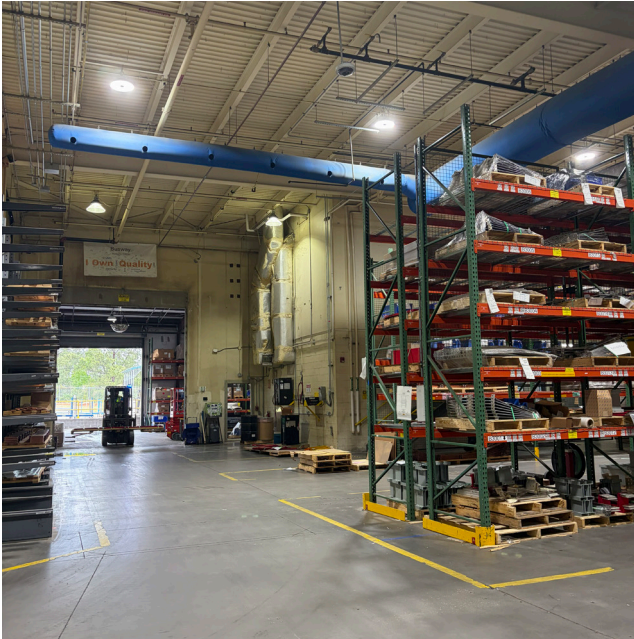
For Sale



	2025 POPULATION	2030 ESTIMATED POPULATION	BACHELOR'S DEGREE OR HIGHER	LABOR FORCE	AVERAGE HH INCOME	BUSINESSES	DAYTIME POPULATION
<b>10 Miles</b>	54,513	54,702	7,241	23,533	\$82,189	2,304	53,127
<b>20 Miles</b>	137,206	137,379	15,028	59,673	\$80,237	4,636	130,849
<b>30 Miles</b>	385,588	398,836	46,696	178,650	\$86,928	10,790	357,081

5502 Highway 25 N  
Hodges, SC 29653

For Sale



© 2026 CBRE, Inc. All rights reserved. This information has been obtained from sources believed reliable, but has not been verified for accuracy or completeness. You should conduct a careful, independent investigation of the property and verify all information. Any reliance on this information is solely at your own risk. CBRE and the CBRE logo are service marks of CBRE, Inc. All other marks displayed on this document are the property of their respective owners, and the use of such logos does not imply any affiliation with or endorsement of CBRE. Photos herein are the property of their respective owners. Use of these images without the express written consent of the owner is prohibited.