

Office | For Sublease

CBRE

# Houghton Plaza Office Building

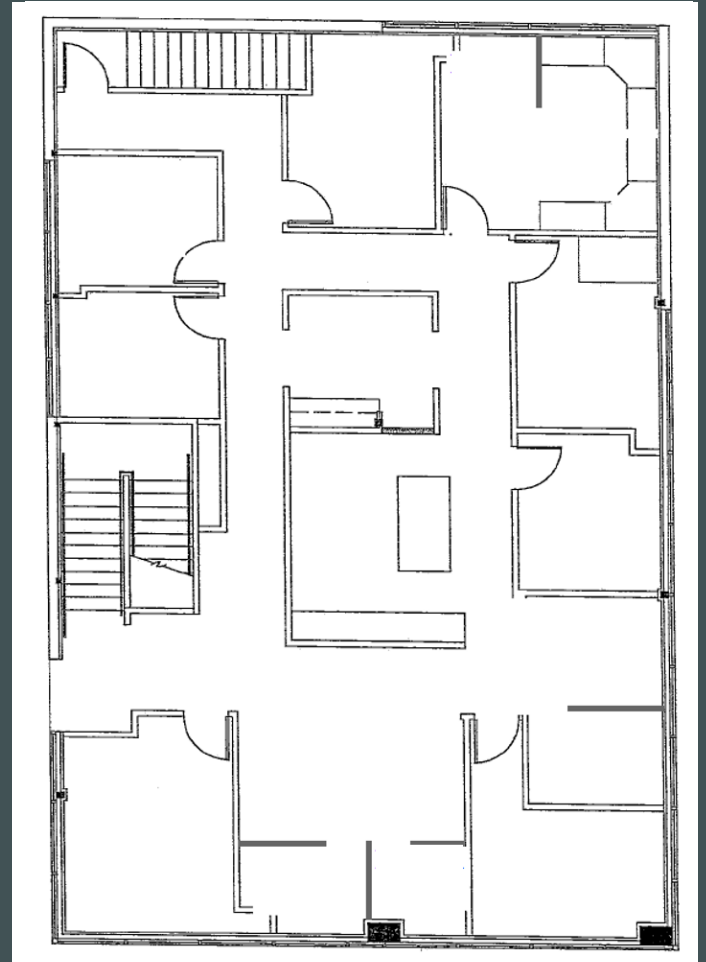
Suite 200: 2,450 SF

750 6th Street South  
Kirkland, WA 98033  
[www.cbre.com/bellevue](http://www.cbre.com/bellevue)



# Property Details

- + Suite 200: 2,450 SF
- + Sublease Term: December 31, 2027
  - Longer term available direct with landlord
- + Available immediately
- + Professional services build out with furniture available
- + Access to building shared conference room
- + Prime Kirkland location adjacent to Google campus within walking distance to retail and amenities
- + Surface and covered parking available free of charge
- + Inquire with brokers for rate details





## Contact Us

**Brian Biege**  
Executive Vice President  
+1 425 462 6914  
[brian.biege@cbre.com](mailto:brian.biege@cbre.com)

**Bryan Oliver**  
Senior Vice President  
+1 425 749 9903  
[bryan.oliver@cbre.com](mailto:bryan.oliver@cbre.com)

**Jacob Hamlin**  
First Vice President  
+1 425 319 7252  
[jacob.hamlin@cbre.com](mailto:jacob.hamlin@cbre.com)

**CBRE, Inc.**  
929 108th Ave NE  
Suite 700  
Bellevue, WA 98004

© 2026 CBRE, Inc. All rights reserved. This information has been obtained from sources believed reliable, but has not been verified for accuracy or completeness. You should conduct a careful, independent investigation of the property and verify all information. Any reliance on this information is solely at your own risk. CBRE and the CBRE logo are service marks of CBRE, Inc. All other marks displayed on this document are the property of their respective owners, and the use of such logos does not imply any affiliation with or endorsement of CBRE. Photos herein are the property of their respective owners. Use of these images without the express written consent of the owner is prohibited. DW 6.2.26