

# Fingerlakes Crossing Shopping Plaza

Prime Location

1620 Clark Street Road  
Auburn, NY 13021

45,000 SF Retail Space | For Sale or Lease



## Offering Overview

This ±45,000 SF anchor opportunity is strategically positioned within one of the region's dominant retail corridors, offering visibility, accessibility, and co-tenancy alongside The Home Depot, Kohl's, Sephora, and Petco. The space can be subdivided or expanded to accommodate a variety of user requirements and benefits from strong traffic counts, significant regional consumer draw, and convenient access to major roadways.

Fingerlakes Crossing features a strong mix of national retailers and destination shopping, making this an ideal opportunity for retail, entertainment, fitness, furniture, specialty grocery, or other high-volume users. The existing layout offers ample parking, prominent signage opportunities, and the infrastructure necessary to support a wide range of retail concepts.

## Offering Details

- + Available for Sale or Lease
- + 45,000 SF Available
- + Space Use: Retail
- + Additional pad site also available for Sale or Lease
- + Contact Broker for Asking Price / Lease Rate

## Fingerlakes Crossing Shopping Plaza

1620 Clark Street, Auburn, NY 13021

# Retail | For Sale or Lease



### CBRE Upstate NY

500 Plum St., Suite 402

Syracuse, NY 13204

+1 315 422 4200

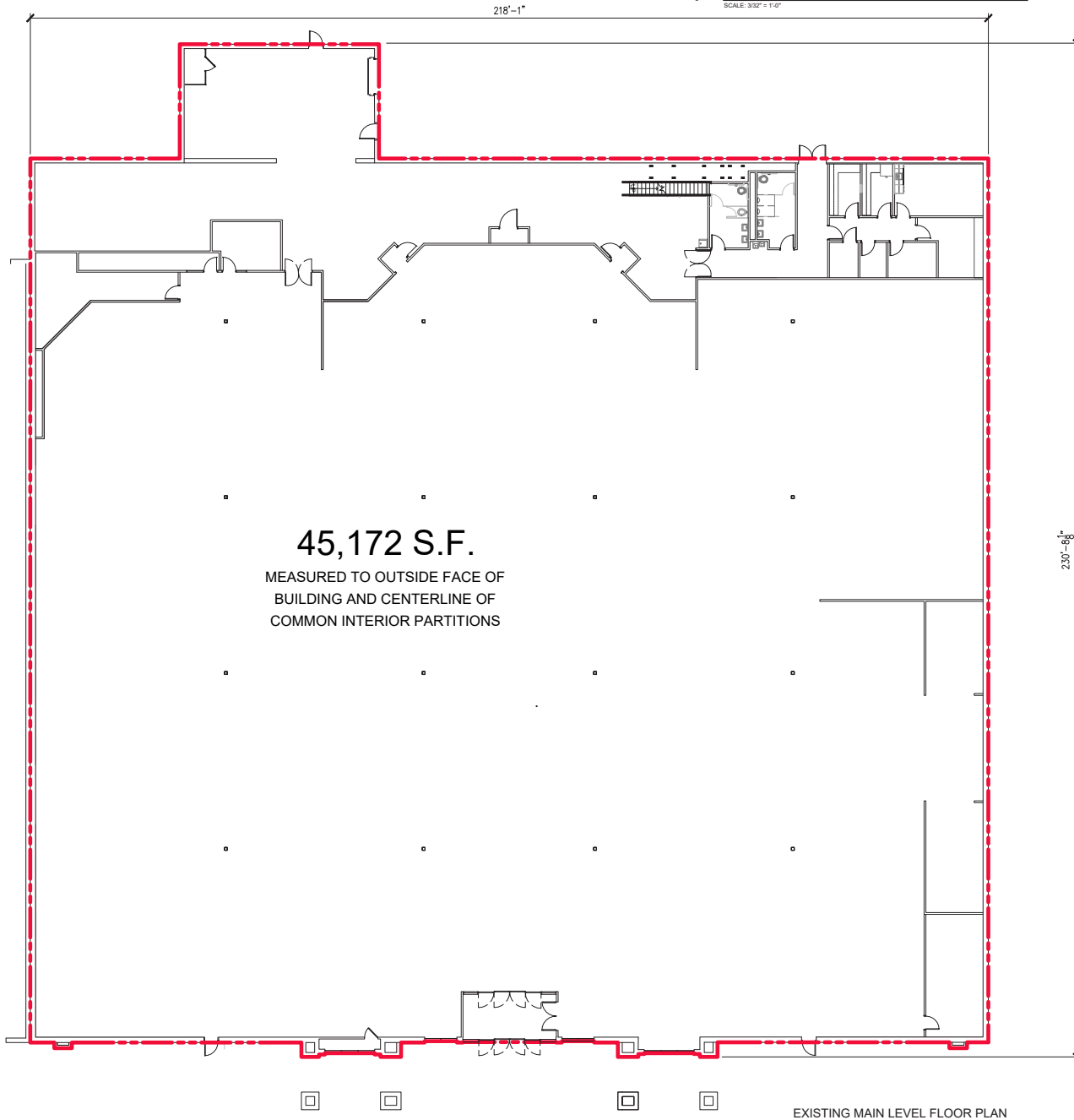
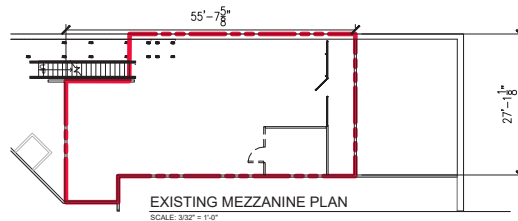
[www.cbre.com/UpstateNY](http://www.cbre.com/UpstateNY)

## CBRE Upstate NY

PART OF THE AFFILIATE NETWORK

1,459 S.F.

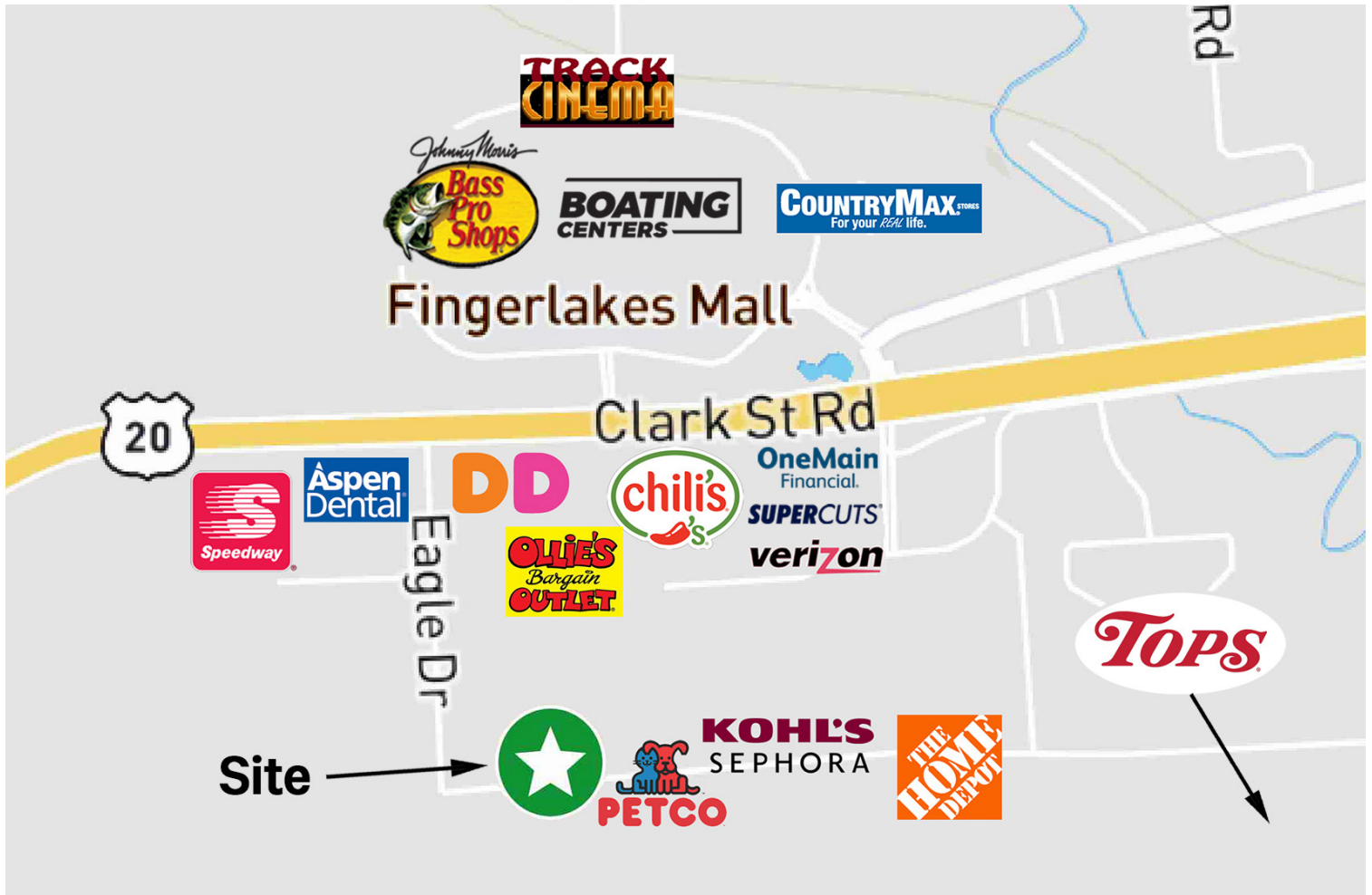
MEASURED TO OUTSIDE FACE OF  
BUILDING AND CENTERLINE OF  
COMMON INTERIOR PARTITIONS



45,172 S.F.

MEASURED TO OUTSIDE FACE OF  
BUILDING AND CENTERLINE OF  
COMMON INTERIOR PARTITIONS

EXISTING MAIN LEVEL FLOOR PLAN  
SCALE: 3/32" = 1'-0"



## Property Overview

- + 45,000 SF of Retail Space
- + 19.33 +/- AC
- + Previous location of Dick's Sporting Goods
- + Space can be subdivided and/or expanded
- + Storefront in Anchored Shopping Plaza
- + Electrical Service: 400A / 3-Phase Power
- + Clear Height: 21' 7"
- + On Bus Line
- + Dedicated Turn Lane
- + Pylon Sign
- + Signage

© 2025 CBRE Upstate NY, part of the CBRE Affiliate Network. All rights reserved. This information has been obtained from sources believed reliable, but has not been verified for accuracy or completeness. You should conduct a careful, independent investigation of the property and verify all information. Any reliance on this information is solely at your own risk. CBRE Upstate NY and the CBRE Upstate NY logo are service marks of CBRE Upstate NY. All other marks displayed on this document are the property of their respective owners, and the use of such logos does not imply any affiliation with or endorsement of CBRE Upstate NY. Photos herein are the property of their respective owners. Use of these images without the express written consent of the owner is prohibited.



# Site Plan

## Traffic Count

Annual Average Daily Traffic	
1620 Clark Street Road	11,728

- + Previous Dick's Sporting Goods, 45,000 SF of Retail Space Available for Sale or Lease, can be subdivided or expanded
- + Additional pad site/outparcel of land in the Fingerlakes Crossing Shopping Plaza available for Sale or Lease
- + Contact Broker for Asking Prices/Lease Rates

© 2025 CBRE Upstate NY, part of the CBRE Aff iliate Network. All rights reserved. This information has been obtained from sources believed reliable, but has not been verified for accuracy or completeness. You should conduct a careful, independent investigation of the property and verify all information. Any reliance on this information is solely at your own risk. CBRE Upstate NY and the CBRE Upstate NY logo are service marks of CBRE Upstate NY. All other marks displayed on this document are the property of their respective owners, and the use of such logos does not imply any aff iliation with or endorsement of CBRE Upstate NY. Photos herein are the property of their respective owners. Use of these images without the express written consent of the owner is prohibited.

**CBRE Upstate NY**  
500 Plum St., Suite 402  
Syracuse, NY 13204  
+1 315 422 4200  
www.cbre.com/UpstateNY

**CBRE Upstate NY**  
PART OF THE AFFILIATE NETWORK

# Fingerlakes Crossing Shopping Plaza

1620 Clark Street, Auburn, NY 13021

# Retail | For Sale or Lease



## Demographics

2025 Demographics	3 Miles	5 Miles	10 Miles
Population	24,080	34,760	61,364
Households	10,721	15,600	27,189
Avg Household Income	\$68,571	\$79,681	\$90,795

## Contact Us

### Amie Culver

+1 315 422 4200 x327

amie.culver@cbre-syr.com

Licensed Real Estate Salesperson, CBRE Upstate NY

### Jaymes Keenan

+1 585 784-3638

jaymes.keenan@cbre-rochester.com

Licensed Real Estate Salesperson, CBRE Upstate NY

### David Townes

+1 973 829 4800

david.townes@jll.com

Managing Director, JLL

© 2025 CBRE Upstate NY, part of the CBRE Aff iliate Network. All rights reserved. This information has been obtained from sources believed reliable, but has not been verified for accuracy or completeness. You should conduct a careful, independent investigation of the property and verify all information. Any reliance on this information is solely at your own risk. CBRE Upstate NY and the CBRE Upstate NY logo are service marks of CBRE Upstate NY. All other marks displayed on this document are the property of their respective owners, and the use of such logos does not imply any aff iliation with or endorsement of CBRE Upstate NY. Photos herein are the property of their respective owners. Use of these images without the express written consent of the owner is prohibited.

### CBRE Upstate NY

500 Plum St., Suite 402

Syracuse, NY 13204

+1 315 422 4200

www.cbre.com/UpstateNY

# CBRE Upstate NY

PART OF THE AFFILIATE NETWORK