

BELLEVUE TOWER

7887 E BELLEVUE AVENUE | DENVER, CO 80237



FOR SUBLEASE - 6,469SF

CBRE

SPACE HIGHLIGHTS



SPACE
6,469 SF



AVAILABLE
30 DAYS



TERM
THROUGH 1/31/2030



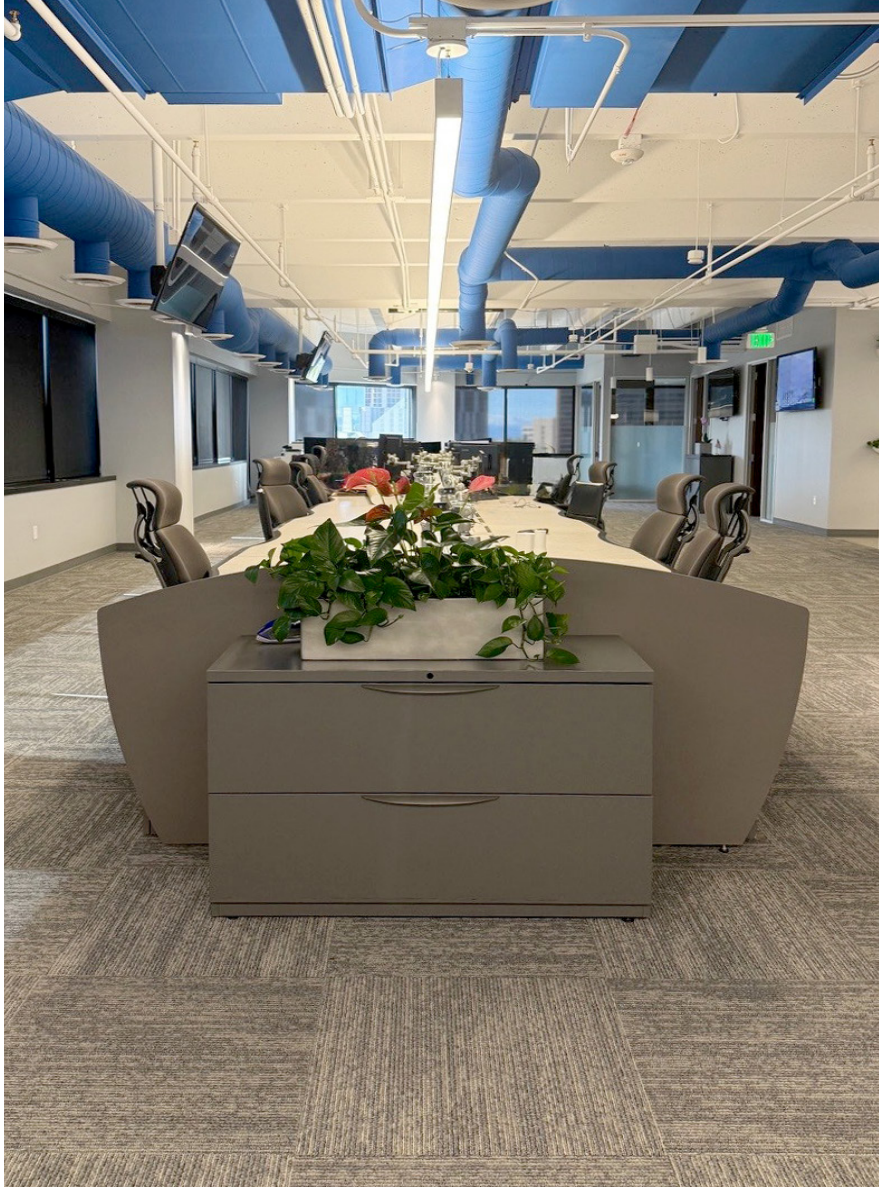
LEASE RATE
NEGOTIABLE



PARKING
3.7/1000

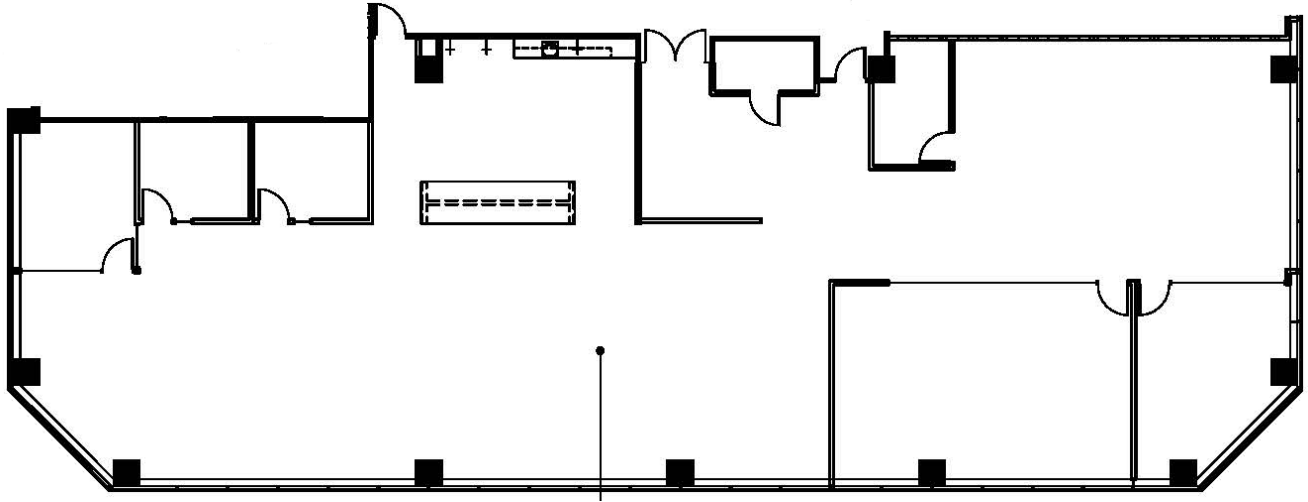


FURNITURE
AVAILABLE



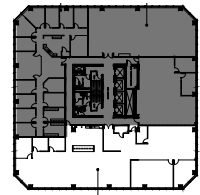
BUILDING AMENITIES

- Fitness Center with Private Yoga Center
- Outdoor Tenant Patio
- Conference Facility
- Free Coffee Bar
- Adjacent to I-25 with quick access to I-225

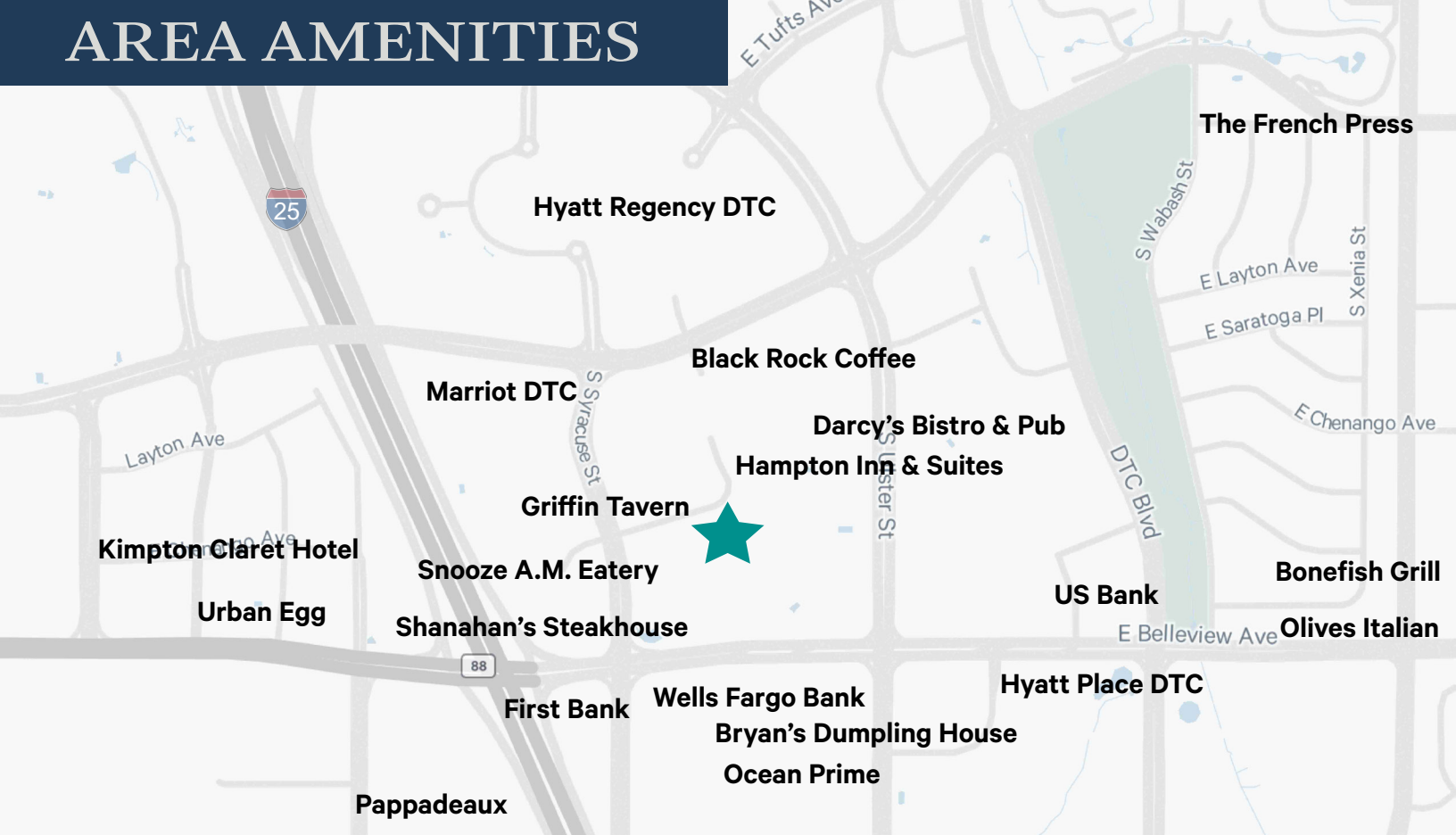


FLOOR PLAN

SUITE 400 | 6,469 SF



AREA AMENITIES



7887 E BELLEVIEW AVENUE | DENVER, CO 80237

BELLEVIEW TOWER

CONTACT US

ZYDIN JASSAT

Senior Vice President
303 819 7516
zydin.jassat@cbre.com

ALEX BUCK

Associate
518 424 3229
alexander.buck@cbre.com

© 2026 CBRE, Inc. All rights reserved. This information has been obtained from sources believed reliable, but has not been verified for accuracy or completeness. You should conduct a careful, independent investigation of the property and verify all information. Any reliance on this information is solely at your own risk. CBRE and the CBRE logo are service marks of CBRE, Inc. All other marks displayed on this document are the property of their respective owners, and the use of such logos does not imply any affiliation with or endorsement of CBRE. Photos herein are the property of their respective owners. Use of these images without the express written consent of the owner is prohibited.

CBRE