



GOODMAN COMMERCE CENTER CYPRESS



93,894 -
581,703 sqft
Industrial
campus

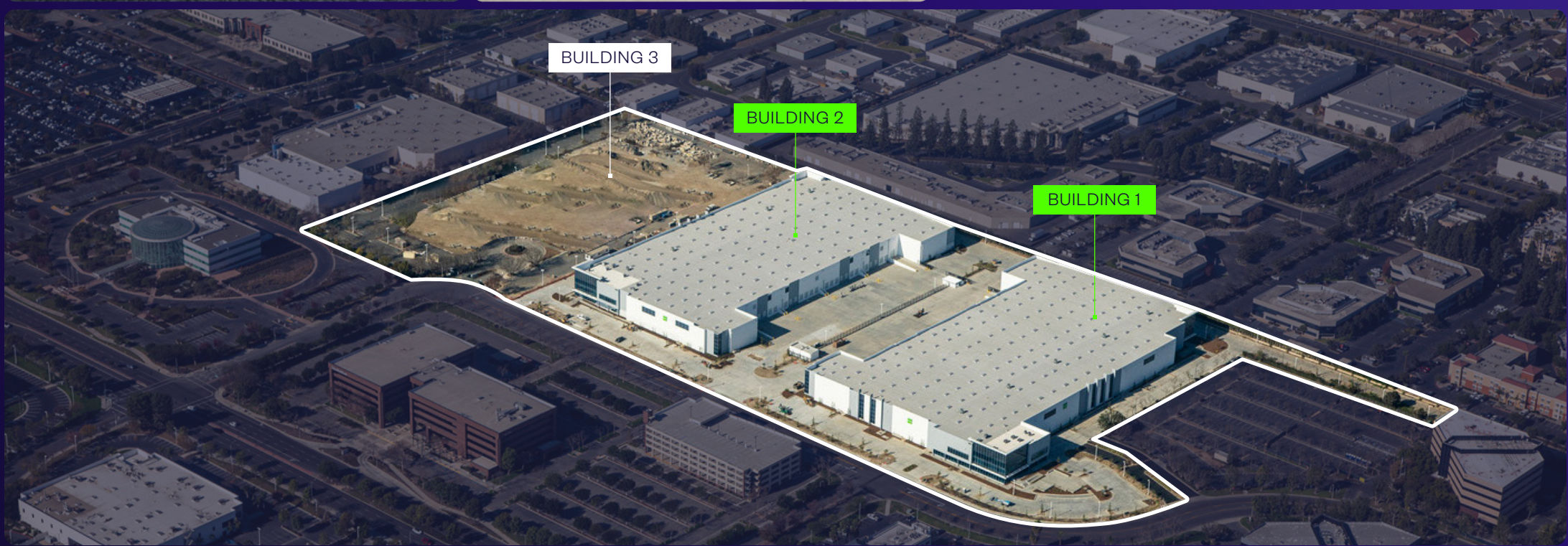
5665-5885 Plaza Drive,
Cypress CA 90630

DESIGNED FOR FLEXIBILITY



SPECIFICATION

- + Power: 4000 amps switchgear, 2000 amps meter section
- + 36 ft clear internal height
- + 25 dock doors per building
- + Secured yard
- + 2 grade level doors per building
- + Solar ready roof
- + 458 auto parking stalls expansion to 632 possible (B1 & B2)
- + 135 ft truck court depth
- + 389,809 sqft total for building 1 and 2 available
- + 23 Level 2 EV chargers installed, expandable
- + LEED Gold Certified building
- + Flat Floors to support automation



SITE PLAN

GCC Cypress 581,703 SF

BUILDING 1 204,465 SF

5885 Plaza Drive, Cypress CA

Warehouse	194,355 sf
Office 1st Floor	5,222 sf
Office 2nd Floor	4,888 sf
Warehouse clear height	36 ft
Grade level doors	2 doors
Dock high doors	25 doors
Auto stalls / + truck court	279-366 stalls
Power	4000a switchgear 2000a meter section
Truck court depth	135 ft
Column spacing	56' x 60'

BUILDING 2 185,344 SF

5755 Plaza Drive, Cypress CA

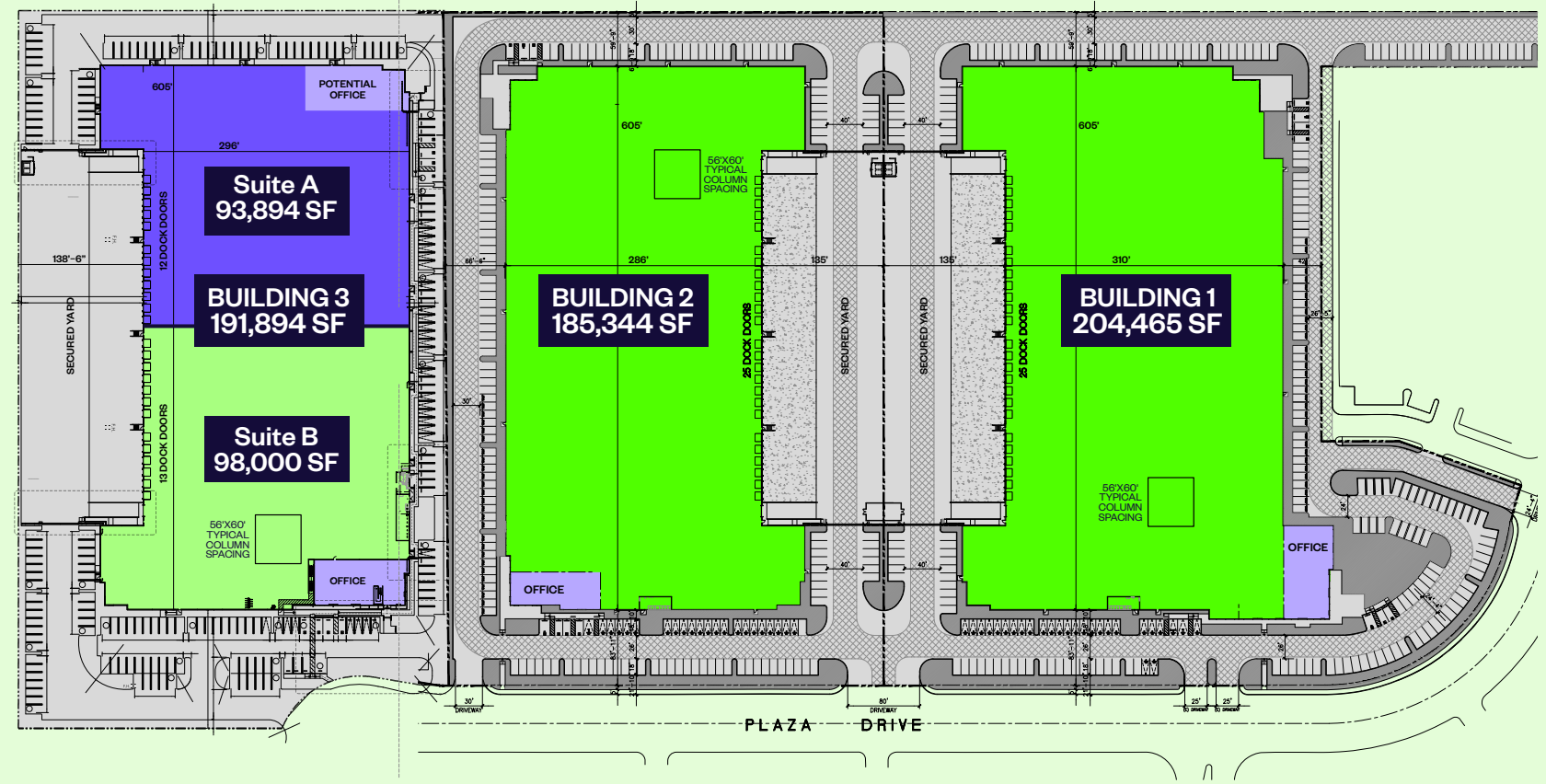
Warehouse	175,011 sf
Office 1st Floor	5,184 sf
Office 2nd Floor	5,149 sf
Warehouse clear height	36 ft
Grade level doors	2 doors
Dock high doors	25 doors
Auto stalls / + truck court	179-266 stalls
Power	4000a switchgear 2000a meter section
Truck court depth	135 ft
Column spacing	56' x 60'

BUILDING 3 191,894 SF

5665 Plaza Drive, Cypress CA

Suite A	93,894 sf
Suite B	98,000 sf
Dock high doors	25 doors
Auto stalls / + truck court	205-294 stalls
Power	4000a switchgear 2000a meter section
Truck court depth	135 ft
Column spacing	56' x 60'

Available Q1 2027
Building may be modified to-suit prior to planned April 2026 construction start - ideal for refrigeration or advanced manufacturing modifications



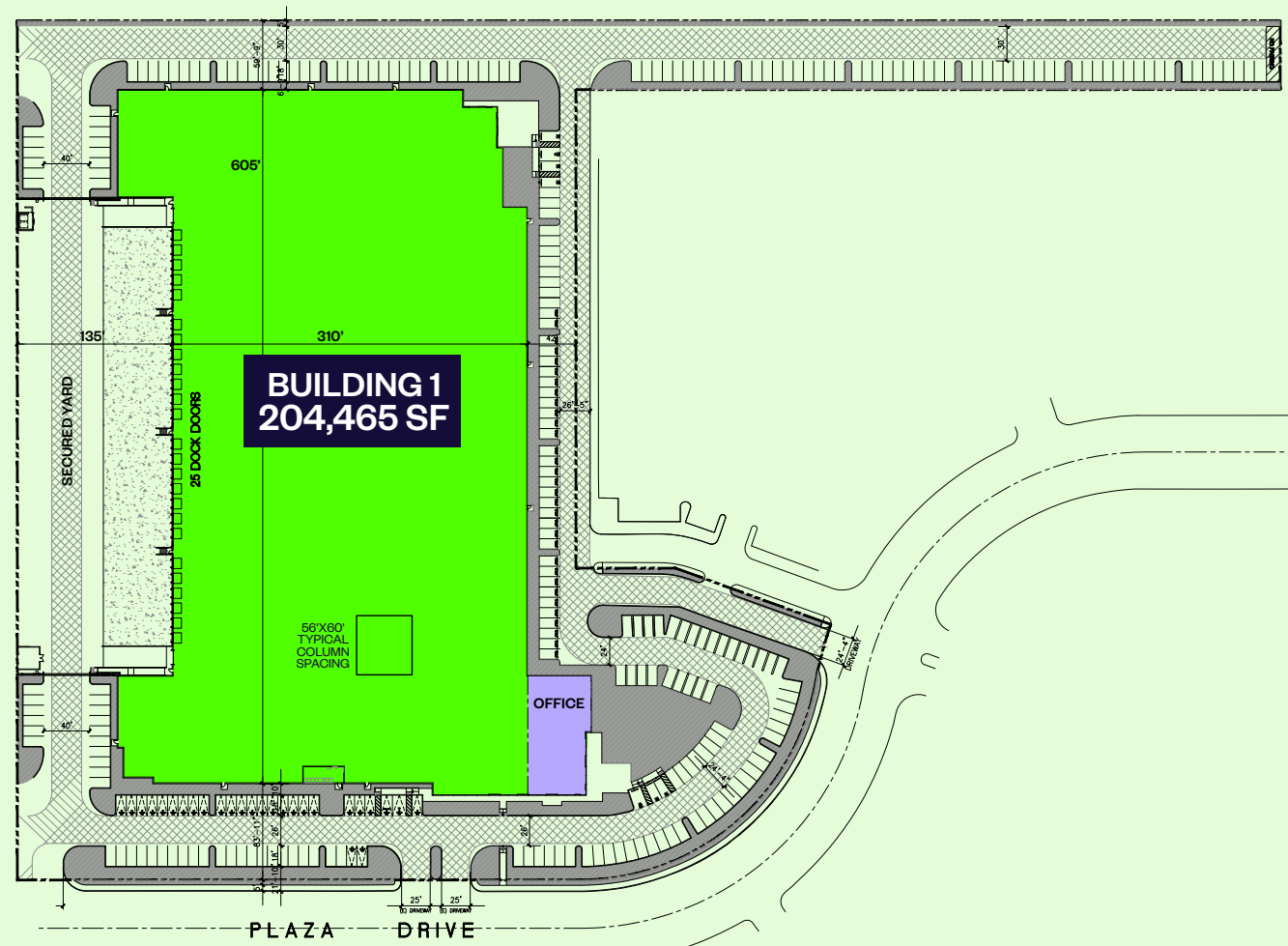
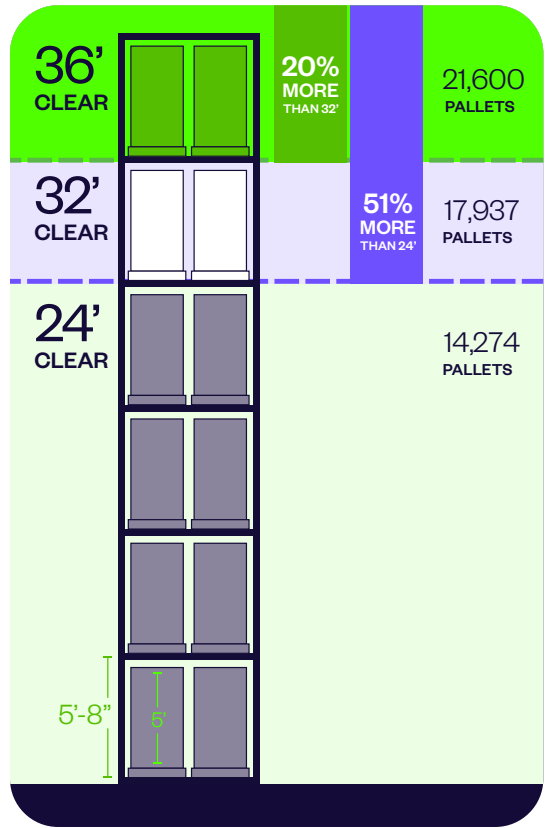
■ OFFICE AND MEZZANINE
■ WAREHOUSE

SITE PLAN

BUILDING 1 204,465 SF

5885 Plaza Drive,
Cypress CA

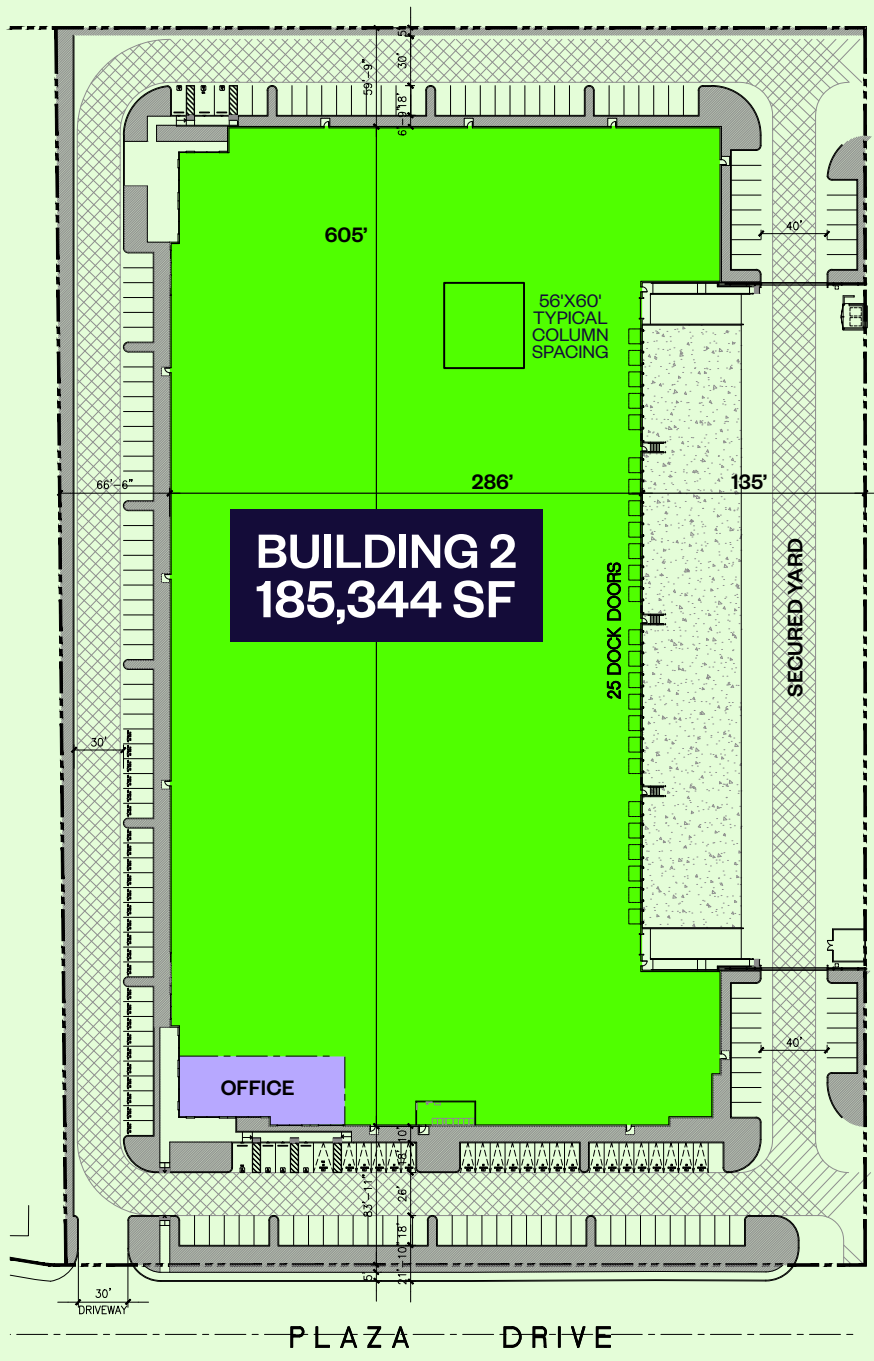
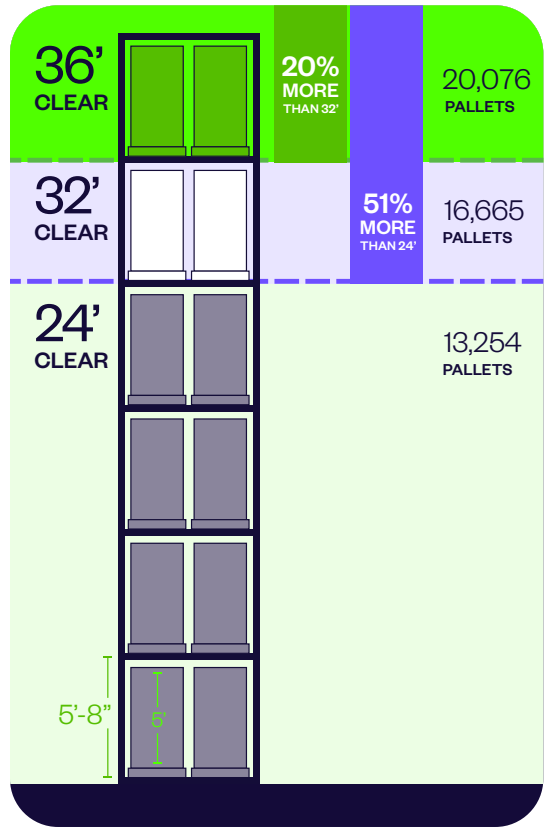
Warehouse	194,355 sf
Office 1st Floor	5,222 sf
Office 2nd Floor	4,888 sf
Warehouse clear height	36 ft
Grade level doors	2 doors
Dock high doors	25 doors
Auto stalls / + truck court	279-366 stalls
Power	4000a switchgear 2000a meter section
Truck court depth	135 ft
Column spacing	56' x 60'



- OFFICE AND MEZZANINE
- WAREHOUSE

SITE PLAN

BUILDING 2	185,344 SF
5755 Plaza Drive, Cypress CA	
Warehouse	175,011 sf
Office 1st Floor	5,184 sf
Office 2nd Floor	5,149 sf
Warehouse clear height	36 ft
Grade level doors	2 doors
Dock high doors	25 doors
Auto stalls / + truck court	179-266 stalls
Power	4000a switchgear 2000a meter section
Truck court depth	135 ft
Column spacing	56' x 60'



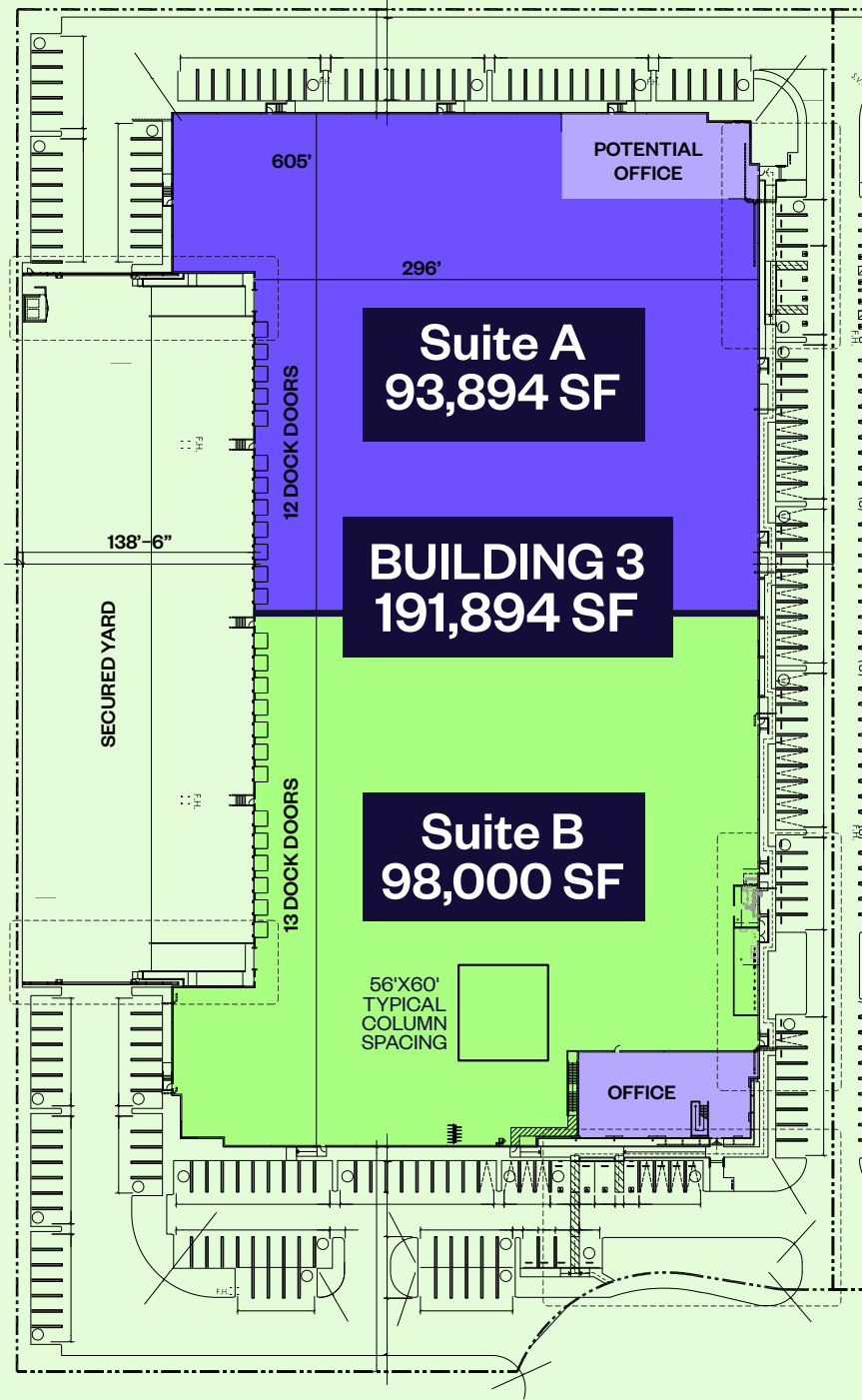
■ OFFICE AND MEZZANINE
■ WAREHOUSE

SITE PLAN

BUILDING 3	191,894 SF
5665 Plaza Drive, Cypress CA	
Suite A	93,894 sf
Suite B	98,000 sf
Dock high doors	25 doors
Auto stalls / + truck court	205-294 stalls
Power	4000a switchgear 2000a meter section
Truck court depth	135 ft
Column spacing	56' x 60'

Available Q1 2027

Building may be modified to-suit prior to planned April 2026 construction start - ideal for refrigeration or advanced manufacturing modifications



- OFFICE AND MEZZANINE
- WAREHOUSE

LOCATION

5665-5885 Plaza Drive,
Cypress CA 90630

Customers enjoy excellent freeway connectivity to key routes, with direct access to the 405, 91, and 605 Freeways.

The Goodman Commerce Center Cypress benefits from superior site access and is strategically located in Northwestern Orange County, offering a cutting-edge environment for businesses with state-of-the-art, flexible, and LEED Gold-certified sustainable spaces.



ROAD

605 freeway	3 miles
405 freeway	3 miles
SR 91 freeway	3.5 miles



AIRPORTS

Long Beach Airport	7 miles
Los Angeles International Airport	30 miles



PORTS

Port of Los Angeles / Long Beach	20 miles
----------------------------------	----------



BUILT FOR SPACE, ENGINEERED FOR SCALE

Positioned in Cypress, within the Space Beach corridor, connecting your business to elite aerospace engineers, technicians, and advanced manufacturing specialists.



AEROSPACE ENGINEERS

Drive Time	Resident Workers	Net Commuters	Avg. Hourly Earnings
15 Minutes	273		\$55.84
30 Minutes	1,715		\$69.64
45 Minutes	3,440	738	\$71.03



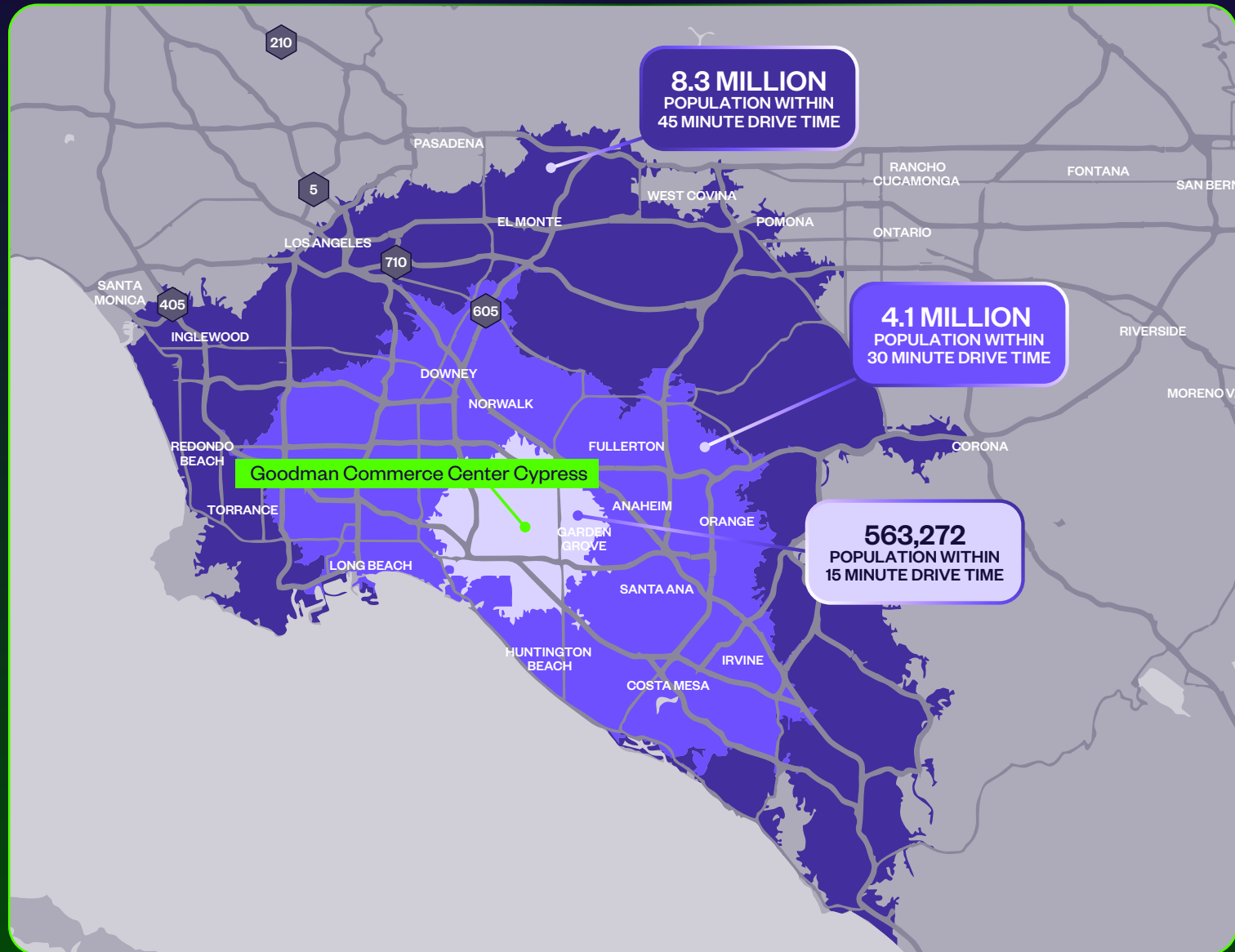
WAREHOUSE WORKERS

Drive Time	Resident Workers	Net Commuters	Avg. Hourly Earnings
15 Minutes	10,822		\$14.86
30 Minutes	79,833	9,004	\$18.37
45 Minutes	166,057	14,162	\$18.81



MANUFACTURERS & FABRICATORS

Drive Time	Resident Workers	Net Commuters	Avg. Hourly Earnings
15 Minutes	2,099		\$16.80
30 Minutes	14,266	2,255	\$20.68
45 Minutes	27,065	3,228	\$21.02



GCC CYPRESS

Aerospace + High Tech Manufacturers
Proximity Map

- 1



ALIGN
PRECISION

Align Precision
Garden Grove
- 2



alliance
spacesystems

Alliance Spacesystems, LLC
Los Alamitos
- 3



ARROWHEAD
ENGINEERED PRODUCTS

Arrowhead Products
Los Alamitos
- 4



CYBER AEROSPACE CORP

Cyber Aerospace Corp
Garden Grove
- 5



DOVER

Dover Corporation
Cypress
- 6



GKN
AEROSPACE

GKN Aerospace
Garden Grove
- 7



L3 Technologies

L3 Technologies
Cypress
- 8



LEONARDO

Leonardo DRS
Cypress
- 9



lisi
AEROSPACE

Lisi Aerospace
Garden Grove
- 10



mercury

Mercury Systems, Inc.
Cypress
- 11



PACIFIC
AEROSPACE

Pacific Aerospace Corp
Stanton
- 12



Pratt & Whitney
A United Technologies Company

Pratt & Whitney
Cypress
- 13



Q-TECH
CORPORATION

Q-Tech Corporation
Cypress
- 14



Rolls-Royce

Rolls-Royce High Temperature
Composites - Cypress
- 15



SAFRAN

Safran Aerospace
Cypress
- 16



Senra Systems

Senra Systems
Cypress
- 17



TJ AEROSPACE

TJ Aerospace
Garden Grove



CONTACT US



ENQUIRE NOW

Blair Dahl
VP Entitlements & Construction,
Southwest
blair.dahl@goodman.com
949 407 0118

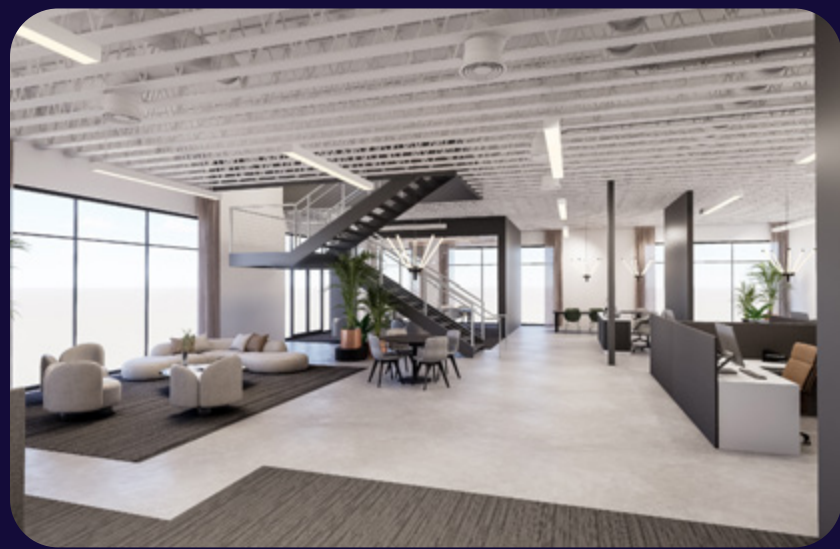
CBRE

Ben Seybold
License #: 01081310
ben.seybold@cbre.com
714 371 9233

Sean Ward
License #: 01415499
sean.ward@cbre.com
714 371 9222

us.goodman.com

Artist impression of office fit-out



This document has been prepared by Goodman North America LLC for general information purposes only. Whilst every care has been taken in relation to its accuracy, no warranty of accuracy is given or implied. You should obtain your own independent advice before making any decisions about the property referred to in this document. Images contained in this document have been used to enable the customer to visualise the development concepts only, and are not intended to definitively represent the final product. March 2026 us.goodman.com