

For Sublease

CBRE

±1,400 SF Available

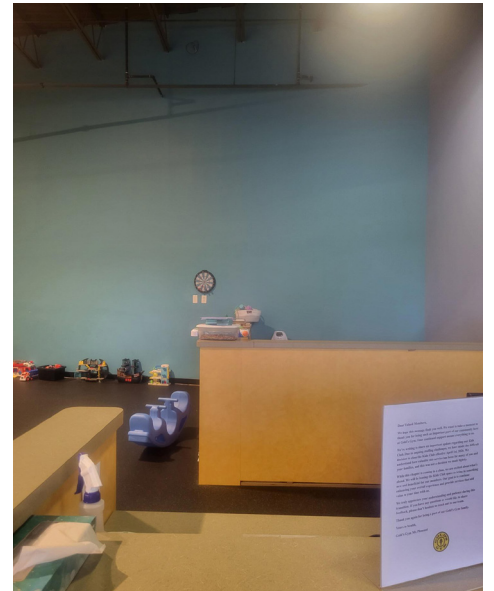
730 Coleman Boulevard

Mount Pleasant, South Carolina | www.cbre.com/charlestonsc



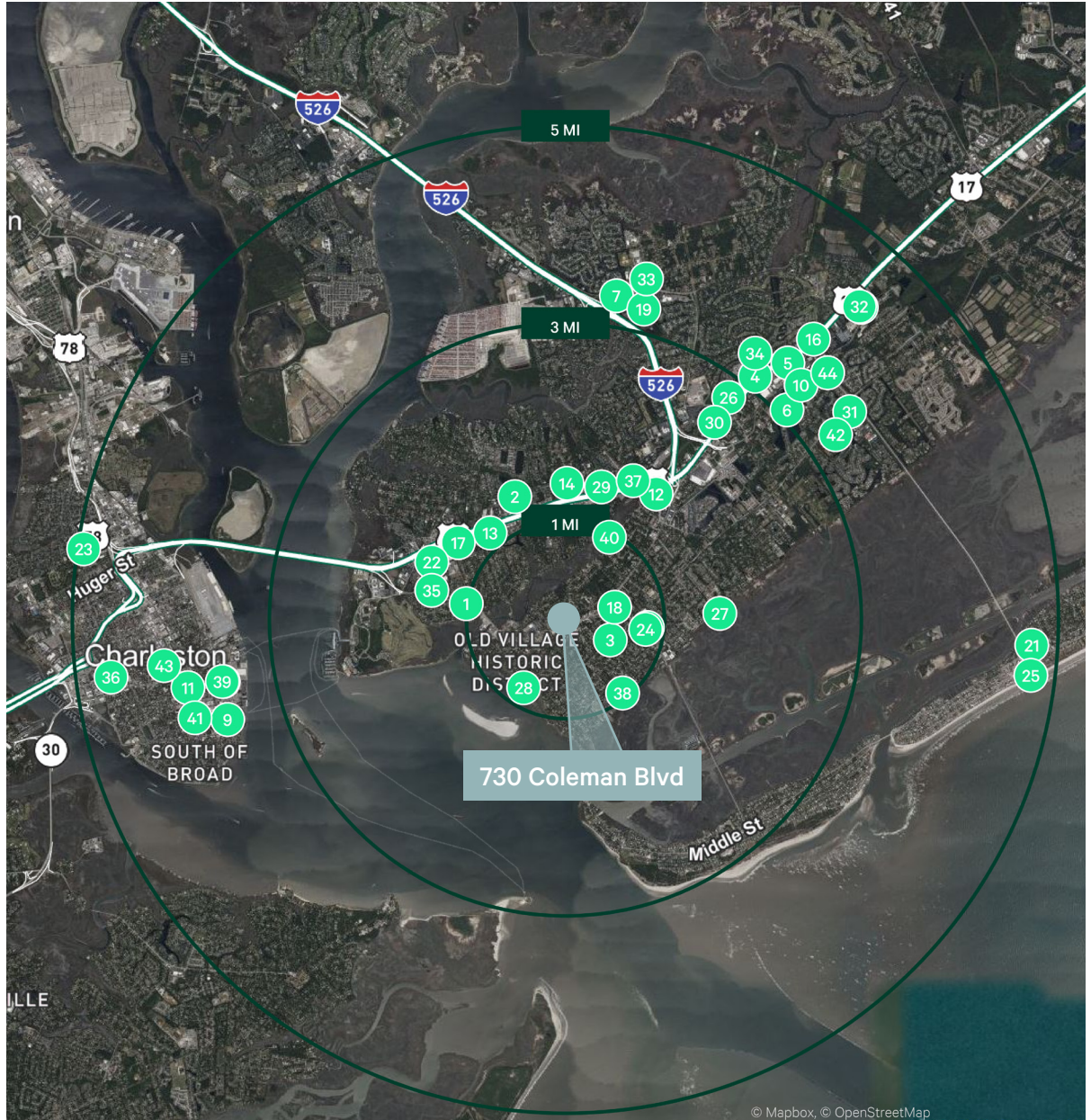
Property Details

- + Approximately 1,400 SF space available now
- + Former kids club location for Gold's Gym; Open space ready for immediate occupancy
- + Entrance to the space will be off of the main foyer area of the main entrance to Gold's Gym
- + Brookgreen Town Center is located off of Coleman Boulevard which sees 36,600 VPD
- + Excellent location in Mount Pleasant | Great for retail, restaurant, and office/service related retail.
- + Other tenants within Brookgreen Town Center include Mozzo's Deli, Starbucks, Star Nail Spa and Verde and more
- + **Lease Rate: \$39.00 PSF Gross**



	1 Mile	3 Miles	5 Miles
2025 Population	9,622	36,723	101,531
2030 Population Projection	10,022	38,113	107,210
2025-2030 Annual Population Growth Rate	0.82%	0.75%	1.09%
Businesses	717	3,024	7,856
Labor Force	6,126	22,121	57,410
Bachelor's Degree or Higher	3,352	12,423	30,632
Average Household Income	\$170,420	\$177,618	\$160,652

- 1 Vicious Biscuit
- 2 Buffalo Wild Wings
- 3 Flying Biscuit Café
- 4 IHOP
- 5 P.F. Chang's China Bistro
- 6 First Watch Restaurants
- 7 Waffle House
- 8 Steel City Pizza
- 9 Ruby Slipper & Ruby Sunshine
- 10 Grimaldi's Pizzeria
- 11 Bartaco
- 12 The Fresh Market
- 13 ALDI
- 14 Publix Supermarkets
- 15 Harris Teeter
- 16 Trader Joe's
- 17 Trader Joe's
- 18 Harris Teeter
- 19 Harris Teeter
- 20 Harris Teeter
- 21 Harris Teeter
- 22 Harris Teeter
- 23 Food Lion
- 24 Publix Supermarkets
- 25 New York Butcher Shoppe
- 26 OPIE Drive-Thru Grocery
- 27 New York Butcher Shoppe
- 28 Starbucks US
- 29 Summit Coffee
- 30 Dunkin' Donuts
- 31 Starbucks US
- 32 Starbucks US
- 33 Summit Coffee
- 34 Starbucks US
- 35 Starbucks US
- 36 PJ's Coffee of New Orleans
- 37 Starbucks US
- 38 Dunkin' Donuts
- 39 Starbucks US
- 40 Walmart USA
- 41 Target
- 42 Target
- 43 Einstein Brothers
- 44 Just Love Coffee



Contact Us

Joyce Beach
First Vice President
+1 843 224 4242
joyce.beach@cbre.com

CBRE Charleston
+1 843 577 0702
1080 Morrison Drive, Suite 140
Charleston, SC 29403

© 2024 CBRE, Inc. All rights reserved. This information has been obtained from sources believed reliable but has not been verified for accuracy or completeness. CBRE, Inc. makes no guarantee, representation or warranty and accepts no responsibility or liability as to the accuracy, completeness, or reliability of the information contained herein. You should conduct a careful, independent investigation of the property and verify all information. Any reliance on this information is solely at your own risk. CBRE and the CBRE logo are service marks of CBRE, Inc. All other marks displayed on this document are the property of their respective owners, and the use of such marks does not imply any affiliation with or endorsement of CBRE. Photos herein are the property of their respective owners. Use of these images without the express written consent of the owner is prohibited.