

Office | For Sublease



REDUCED LEASE RATE!
\$1.85 PSF - Full Service

Gateway Oaks II

2151 River Plaza Drive
Sacramento, CA



±4,962 RSF Available for Sublease

Contact Us

Tony Whittaker
Senior Vice President
+1 916 492 6914
tony.whittaker@cbre.com
Lic. 01780828

Nellie Cruz
Vice President
+1 916 492 6915
nellie.cruz@cbre.com
Lic. 02086140

Scott Rush
First Vice President
+1 916 781 4802
scott.rush@cbre.com
Lic. 01228497



Gateway Oaks II

2151 River Plaza Drive | Sacramento, CA



Property Description

Gateway Oaks Corporate Campus is the versatile office experience promoting culture, collaboration and wellness. The building park is comprised of four Class A office buildings located at 2150 River Plaza Drive, 2151 River Plaza Drive, 2295 Gateway Oaks Drive and 2520 Venture Oaks Way. These buildings are rich in amenities including tenant lounges, conferencing facilities, indoor and outdoor collaboration areas with WiFi, fitness center and group classes, and more. Located less than a mile from highways, Gateway Oaks Corporate Campus is nearby to suburban neighborhoods, a 5-minute drive to Downtown Sacramento, and 10 minutes to Sacramento International Airport (SMF).

Gateway Oaks II

2151 River Plaza Drive | Sacramento, CA

Property Highlights

- ±4,962 RSF available on the Third Floor
- Master lease expires 6/15/2027; available immediately
- On-site property management and engineer
- Fitness center with showers
- Conference facilities in Gateway I & IV
- Tenant lounge in Gateway I & IV
- Bike racks
- EV charging stations
- Plentiful free parking
- WiFi throughout all common areas and collaboration spaces
- Hotel room and banquet hall discounts at the Courtyard by Marriott
- Lush landscape grounds with tranquil water fountains
- New lobby and common area improvements
- On-site cafe in Gateway I
- New security systems
- Merv-13 HVAC systems



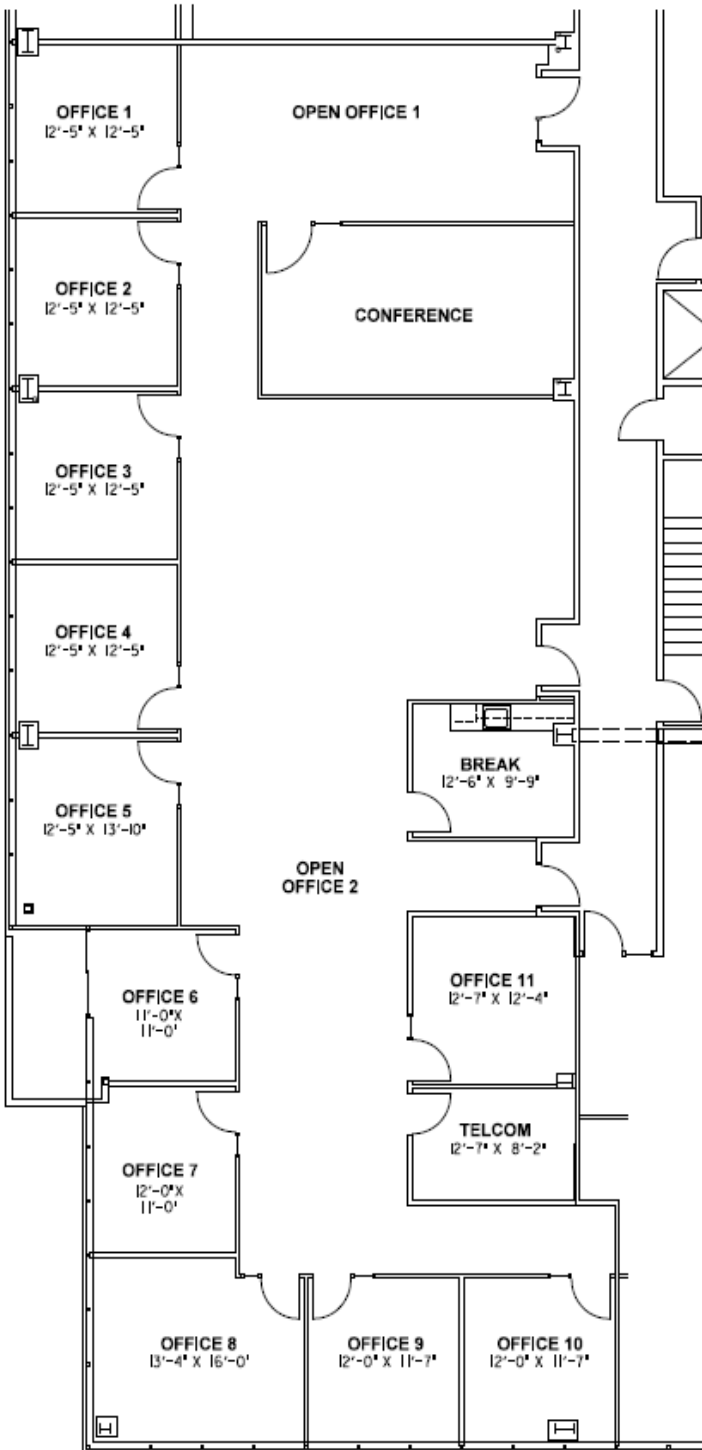
\$1.85 PSF - Full Service



Gateway Oaks II

2151 River Plaza Drive | Sacramento, CA

Floor Plan

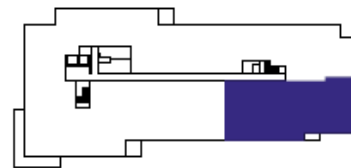


2151

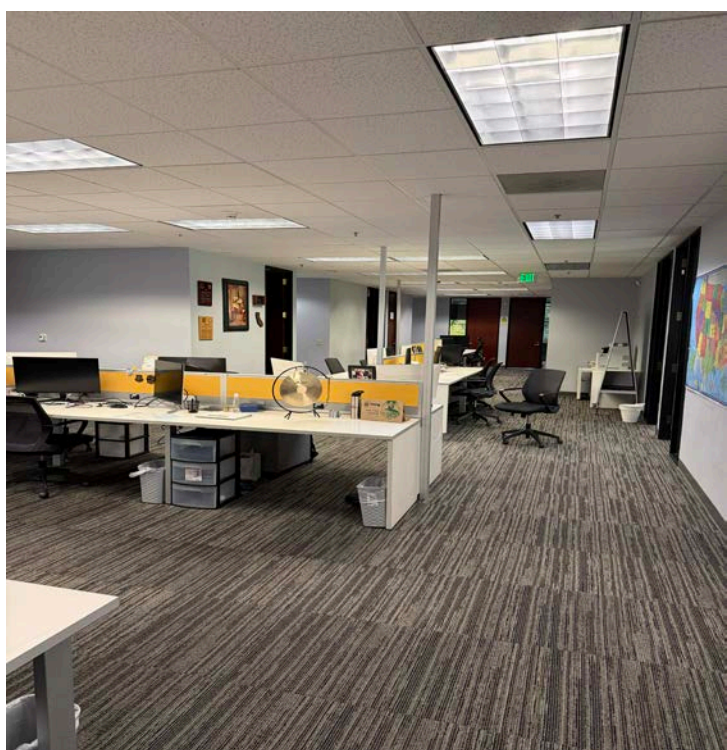
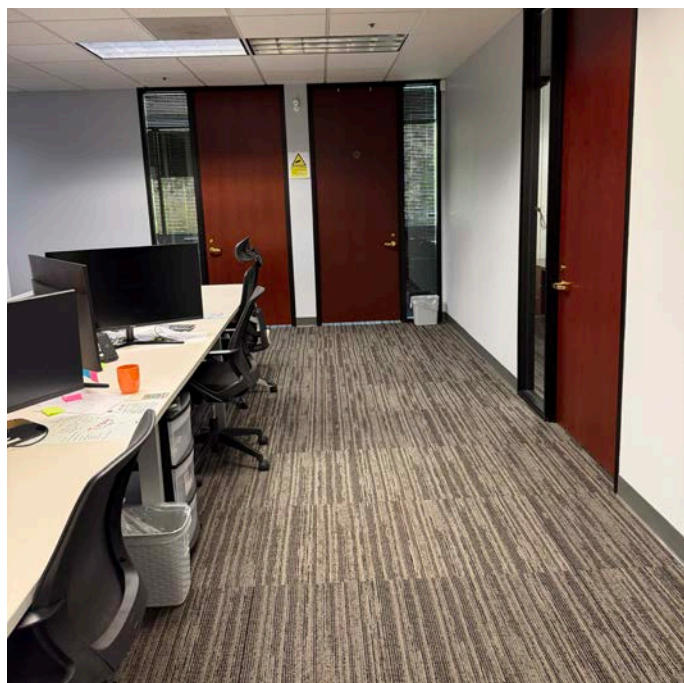
RIVER PLAZA DRIVE

SUITE 320
2151 River Plaza Drive,
Sacramento, CA

4,962 RSF



Interior Photos



Gateway Oaks II

2151 River Plaza Drive

Sacramento, CA



Contact Us

Tony Whittaker

Senior Vice President
+1 916 492 6914
tony.whittaker@cbre.com
Lic. 01780828

Nellie Cruz

Vice President
+1 916 492 6915
nellie.cruz@cbre.com
Lic. 02086140

Scott Rush

First Vice President
+1 916 781 4802
scott.rush@cbre.com
Lic. 01228497

© 2026 CBRE, Inc. All rights reserved. This information has been obtained from sources believed reliable but has not been verified for accuracy or completeness. CBRE, Inc. makes no guarantee, representation or warranty and accepts no responsibility or liability as to the accuracy, completeness, or reliability of the information contained herein. You should conduct a careful, independent investigation of the property and verify all information. Any reliance on this information is solely at your own risk. CBRE and the CBRE logo are service marks of CBRE, Inc. All other marks displayed on this document are the property of their respective owners, and the use of such marks does not imply any affiliation with or endorsement of CBRE. Photos herein are the property of their respective owners. Use of these images without the express written consent of the owner is prohibited.