

Office | For Sublease

# Gateway Oaks II

2151 River Plaza Drive

Sacramento, CA



±4,962 RSF Available for Sublease

## Contact Us

**Tony Whittaker**

Senior Vice President

+1 916 492 6914

[tony.whittaker@cbre.com](mailto:tony.whittaker@cbre.com)

Lic. 01780828

**Nellie Cruz**

Vice President

+1 916 492 6915

[nellie.cruz@cbre.com](mailto:nellie.cruz@cbre.com)

Lic. 02086140

**Scott Rush**

First Vice President

+1 916 781 4802

[scott.rush@cbre.com](mailto:scott.rush@cbre.com)

Lic. 01228497

**CBRE**

## Gateway Oaks II

2151 River Plaza Drive | Sacramento, CA



## Property Description

Gateway Oaks Corporate Campus is the versatile office experience promoting culture, collaboration and wellness. The building park is comprised of four Class A office buildings located at 2150 River Plaza Drive, 2151 River Plaza Drive, 2295 Gateway Oaks Drive and 2520 Venture Oaks Way. These buildings are rich in amenities including tenant lounges, conferencing facilities, indoor and outdoor collaboration areas with WiFi, fitness center and group classes, and more. Located less than a mile from highways, Gateway Oaks Corporate Campus is nearby to suburban neighborhoods, a 5-minute drive to Downtown Sacramento, and 10 minutes to Sacramento International Airport (SMF).

## Gateway Oaks II

2151 River Plaza Drive | Sacramento, CA

# Property Highlights

- ±4,962 RSF available on the Third Floor
- Master lease expires 6/15/2027; available immediately
- On-site property management and engineer
- Fitness center with showers
- Conference facilities in Gateway I & IV
- Tenant lounge in Gateway I & IV
- Bike racks
- EV charging stations
- Plentiful free parking
- WiFi throughout all common areas and collaboration spaces
- Hotel room and banquet hall discounts at the Courtyard by Marriott
- Lush landscape grounds with tranquil water fountains
- New lobby and common area improvements
- On-site cafe in Gateway I
- New security systems
- Merv-13 HVAC systems



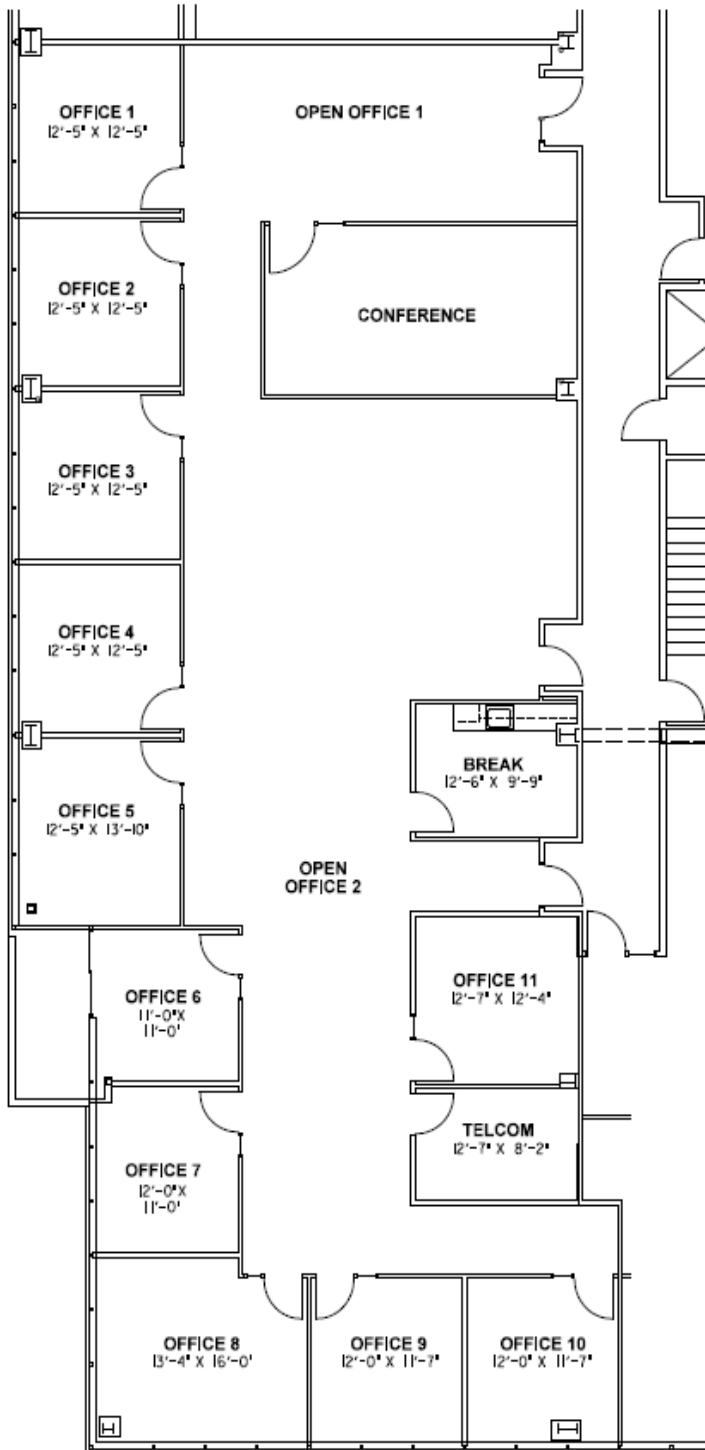
**\$2.15 PSF, Full Service**



# Gateway Oaks II

2151 River Plaza Drive | Sacramento, CA

## Floor Plan

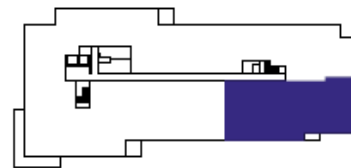


# 2151

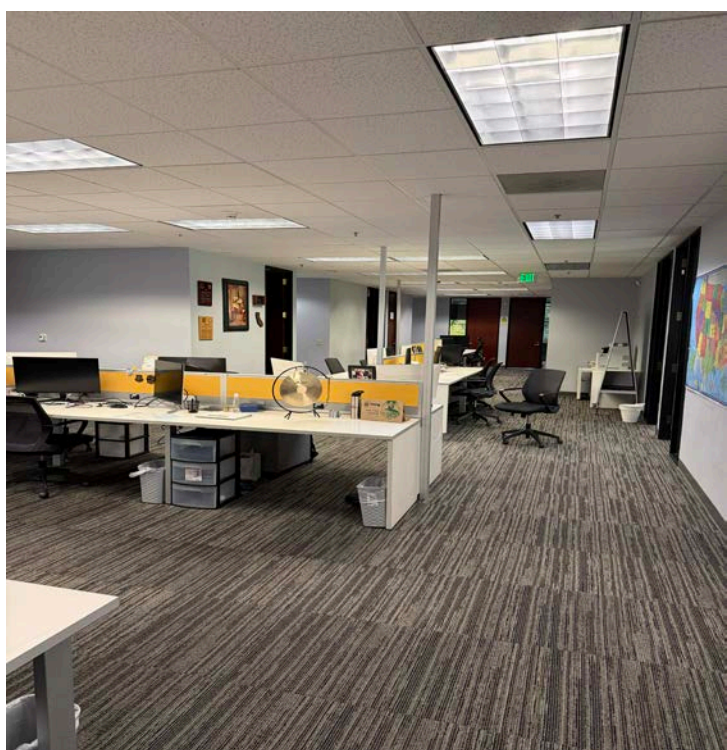
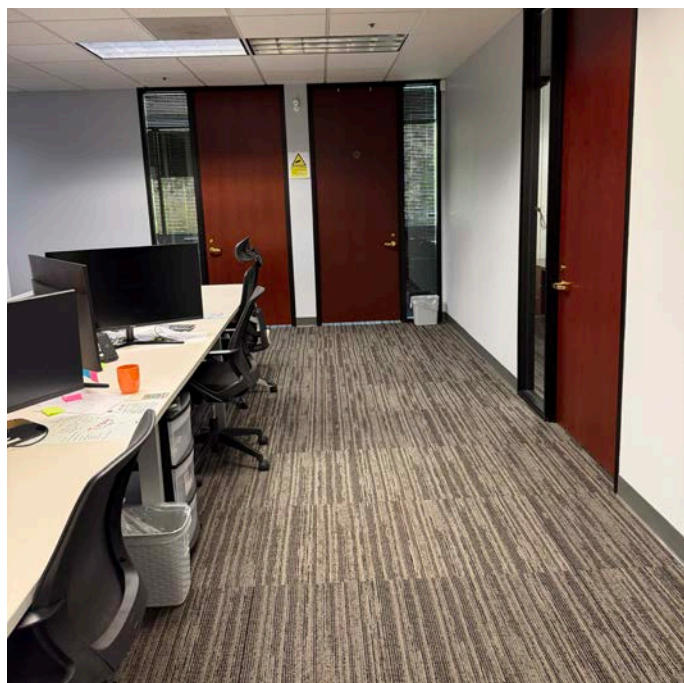
RIVER PLAZA DRIVE

SUITE 320  
2151 River Plaza Drive,  
Sacramento, CA

**4,962 RSF**



## Interior Photos



# Gateway Oaks II

2151 River Plaza Drive

Sacramento, CA



## Contact Us

### Tony Whittaker

Senior Vice President  
+1 916 492 6914  
tony.whittaker@cbre.com  
Lic. 01780828

### Nellie Cruz

Vice President  
+1 916 492 6915  
nellie.cruz@cbre.com  
Lic. 02086140

### Scott Rush

First Vice President  
+1 916 781 4802  
scott.rush@cbre.com  
Lic. 01228497

© 2026 CBRE, Inc. All rights reserved. This information has been obtained from sources believed reliable but has not been verified for accuracy or completeness. CBRE, Inc. makes no guarantee, representation or warranty and accepts no responsibility or liability as to the accuracy, completeness, or reliability of the information contained herein. You should conduct a careful, independent investigation of the property and verify all information. Any reliance on this information is solely at your own risk. CBRE and the CBRE logo are service marks of CBRE, Inc. All other marks displayed on this document are the property of their respective owners, and the use of such marks does not imply any affiliation with or endorsement of CBRE. Photos herein are the property of their respective owners. Use of these images without the express written consent of the owner is prohibited.