

9,544 SF OF OFFICE  
SPACE FOR SUBLEASE

# *The* Pointe VI

25 E SCENIC POINTE DR | DRAPER | UT



SCOTT WILMARTH  
Executive Vice President  
+1 801 869 8025  
scott.wilmarth@cbre.com

DYLAN WHITE  
Senior Associate  
+1 801 869 8054  
dylan.whitew@cbre.com

ISAAC CAMPBELL  
Sales Associate  
+1 801 869 8020  
isaac.campbell@cbre.com

**CBRE**

# PROPERTY

SPECIFICATIONS

Contact Broker  
For Pricing

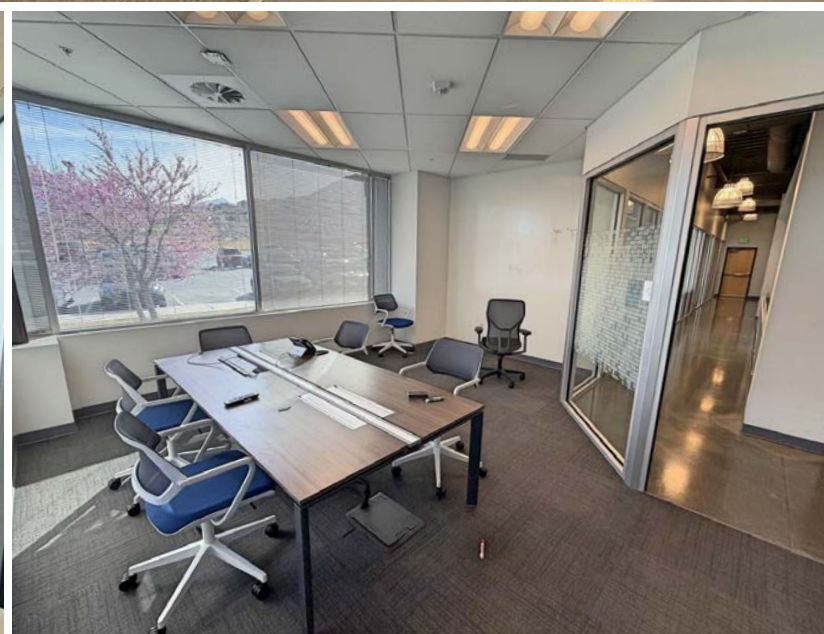
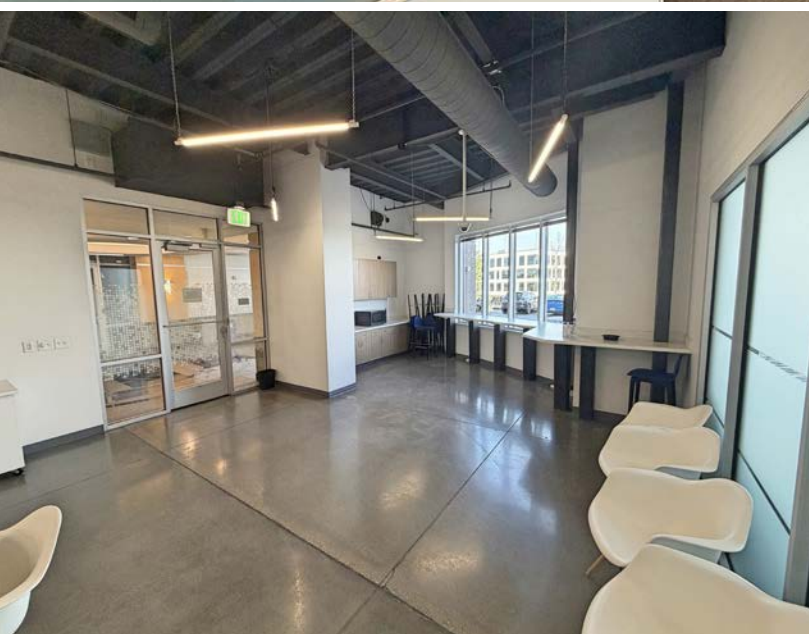
4/1,000 SF  
Parking Ratio

9,544  
SF Available

Furniture  
Available

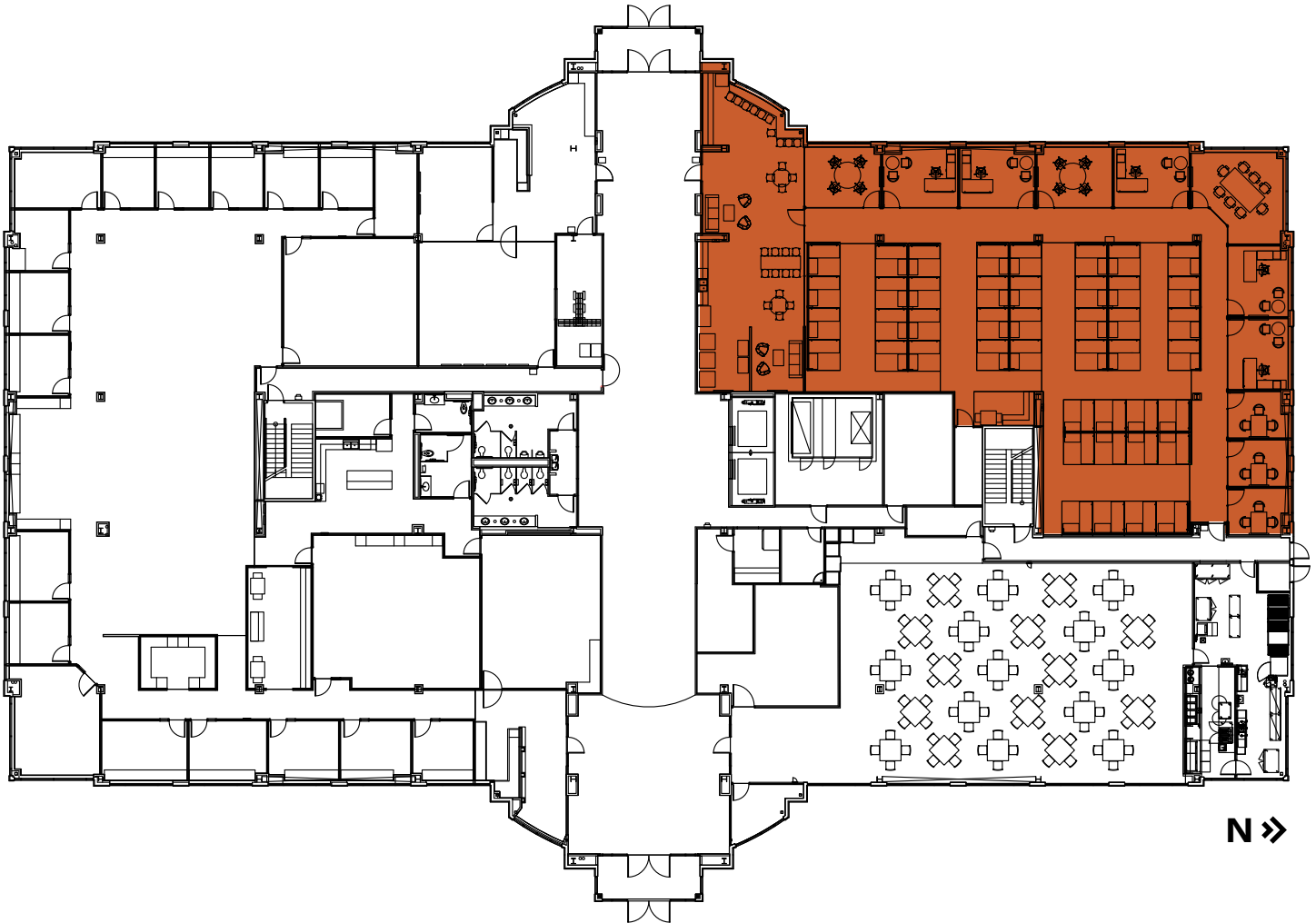
2/28/2030  
Lease Expiration

Class A  
Building and Finishes



# FLOORPLAN

FIRST FLOOR



9,544 sf

*Meet at the Pointe*

9,544 SF OF OFFICE SPACE FOR SUBLEASE

# *The* Pointe VI

25 E SCENIC POINTE DR | DRAPER | UT

SCOTT WILMARTH  
Executive Vice President

+1 801 869 8025  
scott.wilmarth@cbre.com

DYLAN WHITE  
Senior Associate

+1 801 869 8054  
dylan.whitew@cbre.com

ISAAC CAMPBELL  
Sales Associate

+1 801 869 8020  
isaac.campbell@cbre.com

**CBRE**

© 2026 CBRE, Inc. All rights reserved. This information has been obtained from sources believed reliable but has not been verified for accuracy or completeness. CBRE, Inc. makes no guarantee, representation or warranty and accepts no responsibility or liability as to the accuracy, completeness, or reliability of the information contained herein. You should conduct a careful, independent investigation of the property and verify all information. Any reliance on this information is solely at your own risk. CBRE and the CBRE logo are service marks of CBRE, Inc. All other marks displayed on this document are the property of their respective owners, and the use of such marks does not imply any affiliation with or endorsement of CBRE. Photos herein are the property of their respective owners. Use of these images without the express written consent of the owner is prohibited.