

3157

E. ELWOOD ST

PHOENIX, AZ



**FLEX INDUSTRIAL BUILDING
AVAILABLE FOR LEASE IMMEDIATELY!**

CBRE



Property Features

BUILDING SIZE



±76,135 SF

AVAILABLE



Suite 2 | ±22,200 SF

ZONING



A-2, Phoenix

AVAILABLE POWER



1,600 Amps

CEILING HEIGHT



±21' Clear

PARKING



3.87/1,000
292 Stalls

HVAC



100% A/C

BUILDING SIGNAGE



Opportunities along
I-10 Freeway



LOADING

1 Dock Door, 1 Grade
Level Door *Exclusively
for Suite 2*

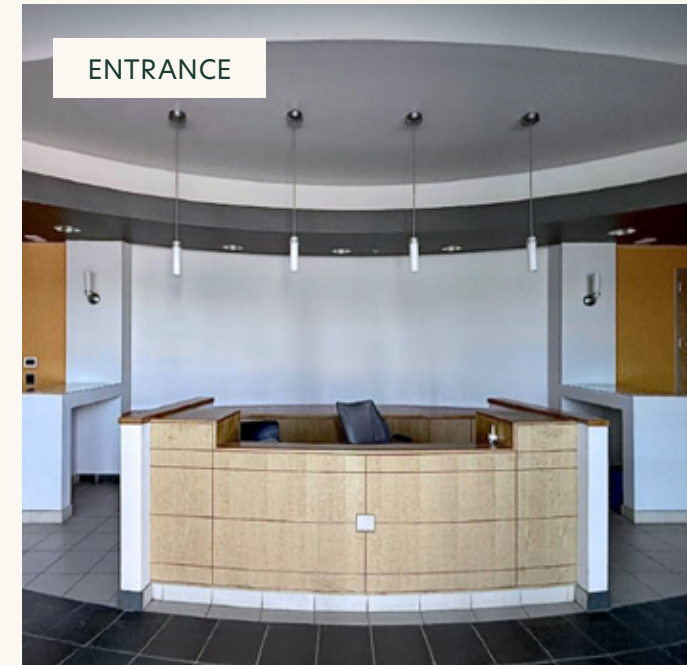


POTENTIAL for Industrial Outdoor Storage

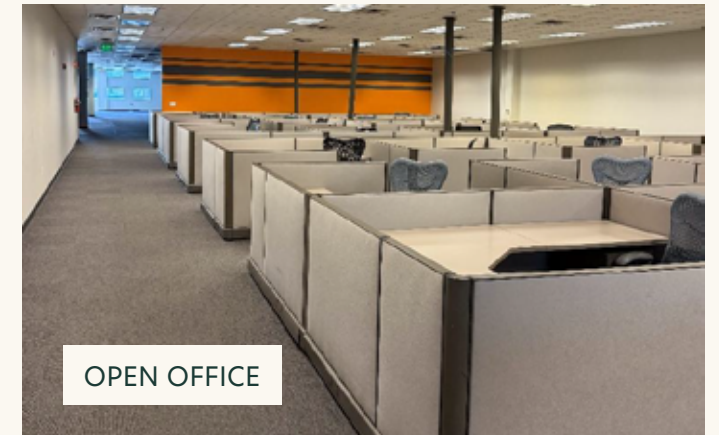


CUBES

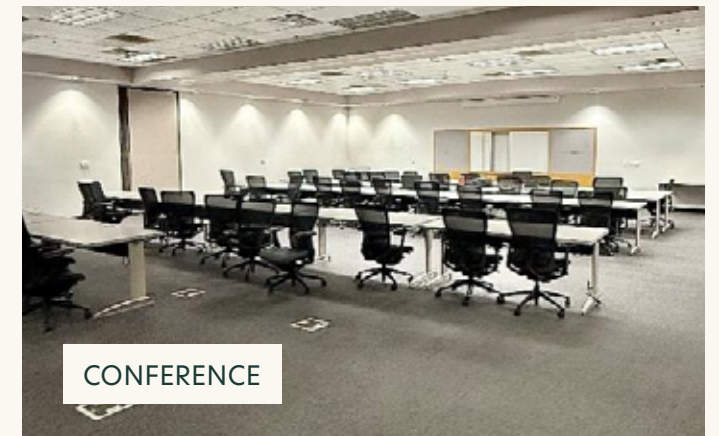
32 Existing
Cubes in
Place



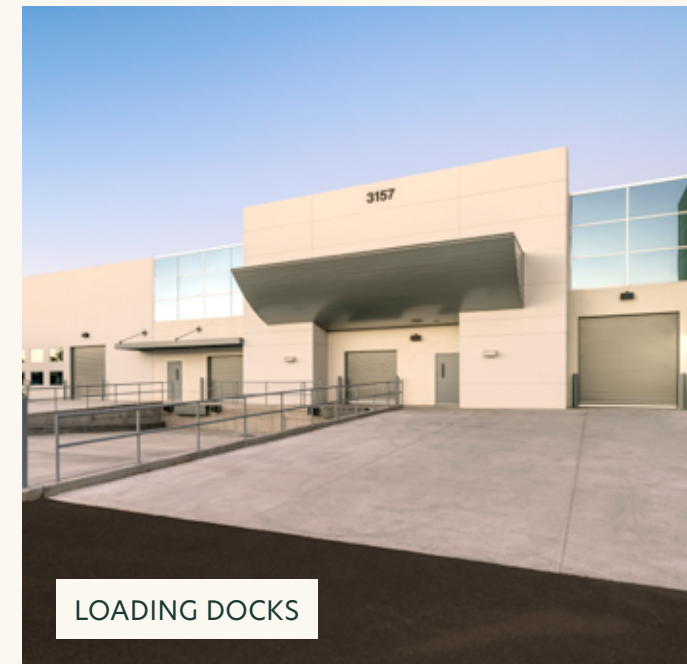
ENTRANCE



OPEN OFFICE



CONFERENCE



LOADING DOCKS



KITCHEN

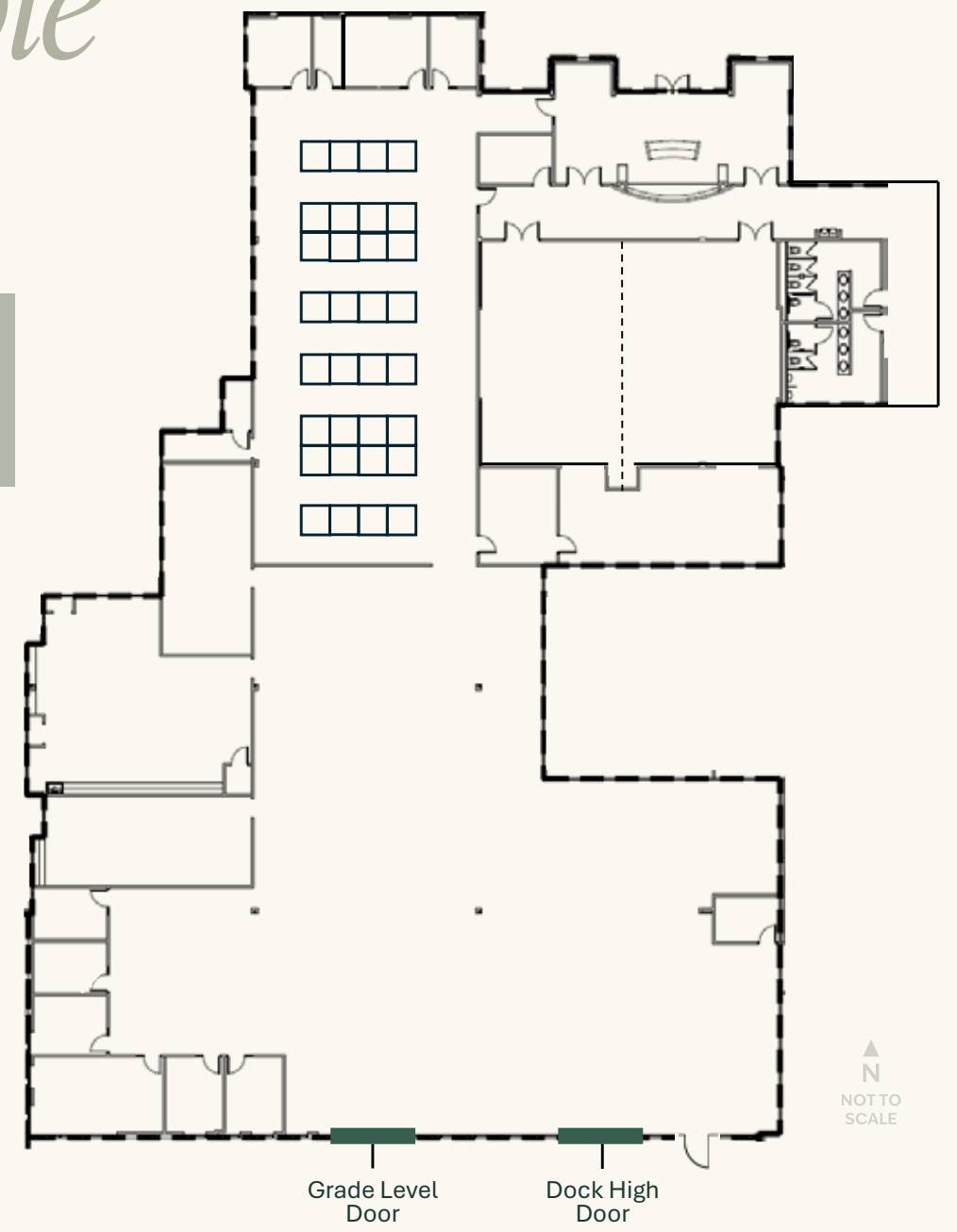
▲ Dock Door
 ■ Drive-in Door
 N
 NOT TO SCALE



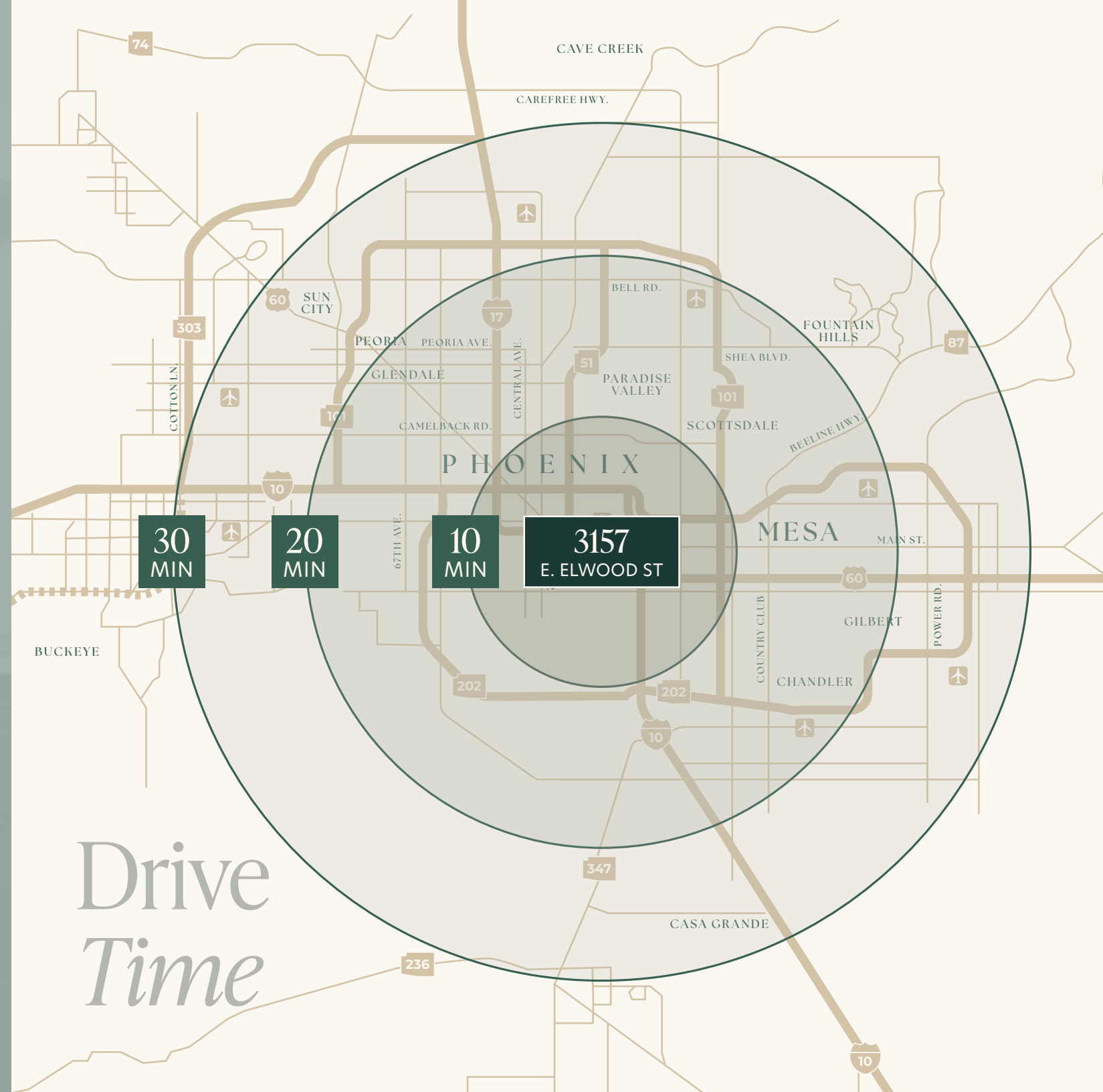
Site Plan

Available Space

SUITE 2
 ±22,200 SF



Location Highlights



Drive Time

3157

E. ELWOOD ST

PHOENIX, AZ



MARK GUSTIN, SIOR, CCIM

+1 602 430 0605

mark.gustin@cbre.com

JIMMY CORNISH

+1 602 980 8844

jimmy.cornish@cbre.com

CBRE



© 2026 CBRE, Inc. All rights reserved. This information has been obtained from sources believed reliable but has not been verified for accuracy or completeness. CBRE, Inc. makes no guarantee, representation or warranty and accepts no responsibility or liability as to the accuracy, completeness, or reliability of the information contained herein. You should conduct a careful, independent investigation of the property and verify all information. Any reliance on this information is solely at your own risk.