



FOR LEASE | CLASS A OFFICE | DOWNTOWN SACRAMENTO

# MERIDIAN PLAZA

1415 L Street | Sacramento, CA

**CBRE**

# BUILDING FEATURES

-  **Two-block walk** to the State Capitol
-  **12-Story Class A Office** Building across from the State Capitol & Capitol Park
-  **Panoramic views** of the State Capitol and Downtown Sacramento
-  Suites Available between **1,297-8,681 RSF**
-  **Suite 180** has a private outdoor patio
-  **24/7 Security**
-  **Move-in ready** spec suites
-  **Professional on-site** property management and engineers
-  **On-site parking**
-  **Fully equipped** fitness center
-  **New!** Conferencing facility
-  **Dry cleaning** pick-up and delivery service
-  **Within walking distance** to a multitude of Downtown Sacramento eateries, hotels and venues



MERIDIAN PLAZA | FOR LEASE | CLASS A OFFICE | DOWNTOWN SACRAMENTO



STATE CAPITOL

MERIDIAN PLAZA

1415 L Street | Sacramento, CA

**Capitol Annex –  
Estimated Completion  
Q3 2027!**



FITNESS CENTER



# INTERIOR FEATURES



CONFERCING CENTER



BUILDING LOBBY

# NEARBY AMENITIES

**20+ Restaurants  
within a 3-Block  
Radius**

## LEGEND

1. Sheraton Hotel, Mayahuel, Ella
2. Pizza Rock, California Family Fitness, El Santo Cantina
3. Starbucks
4. Darling Aviary, Kodaiko Ramen, Bailarin Cellars, Beach Hut Deli
5. 24 Hour Fitness, Sauced BBQ, Chipotle, Estelle's Bakery, Fizz Champagne
6. Kimpton Sawyer, Punch Bowl
7. DOCO, Golden 1 Center, Trophy Club, U.S. Bank, T-Mobile, Kings Store
8. Yard House, Polanco Cantina
9. Bank of America, House Kitchen, Old Soul Coffee, Camden Spit & Larder
10. Morton's Steakhouse
11. BMO, Panera Bread
12. Wells Fargo, Il Fornaio

## MERIDIAN PLAZA

1415 L Street | Sacramento, CA



STATE CAPITOL

DOWNTOWN COMMONS  
Golden 1 Credit Union  
CENTER



Convention & Performing Arts District

CONVENTION & PERFORMING ARTS CENTER WELCOMED 724K VISITORS IN 2025!

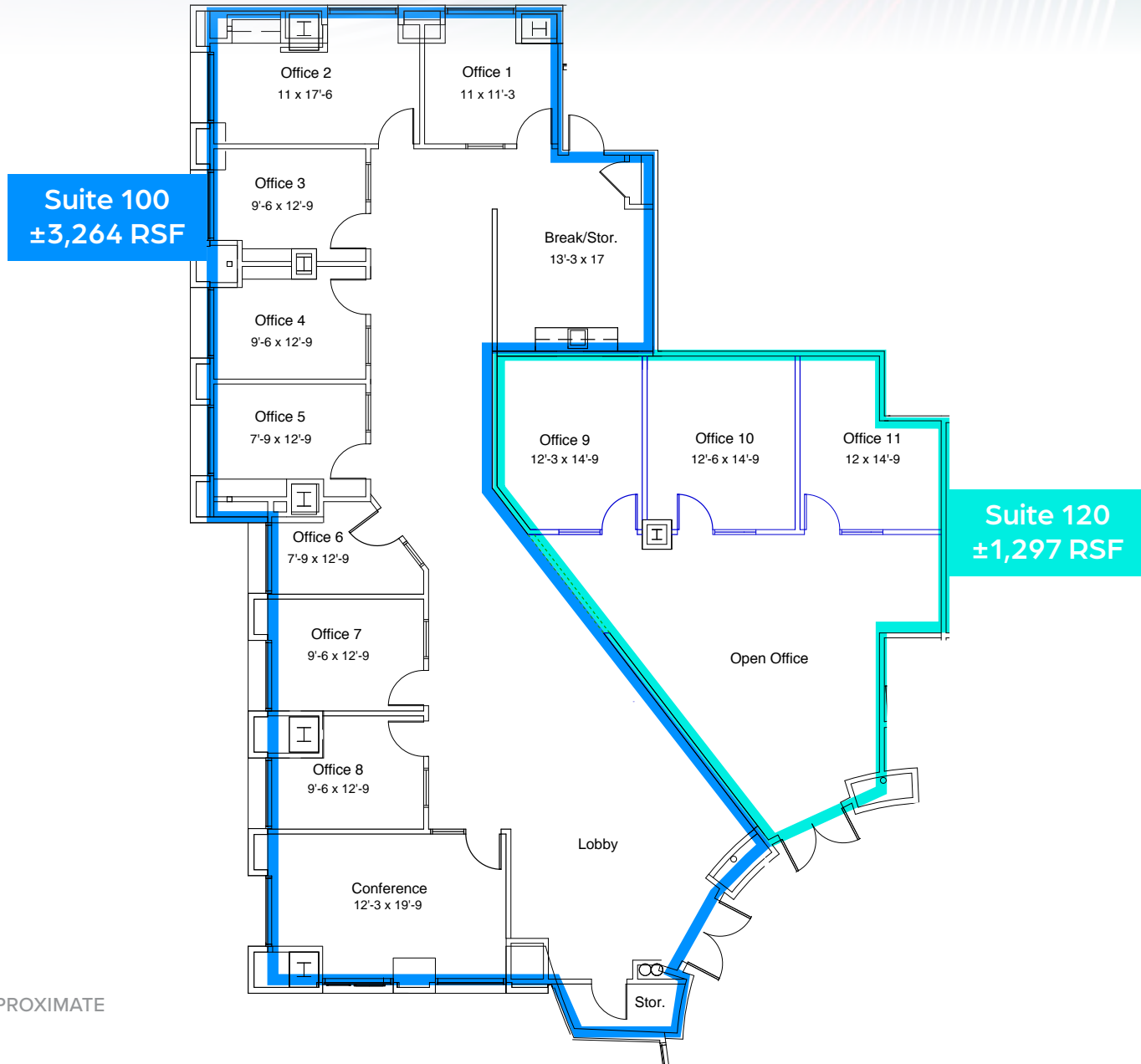
SACRAMENTO'S THEATER DISTRICT RECEIVED 2.9M VISITS IN 2025!

SOURCE: PLACER.AI

CONVENTION CENTER

# SUITES 100/120 | FLOOR PLAN

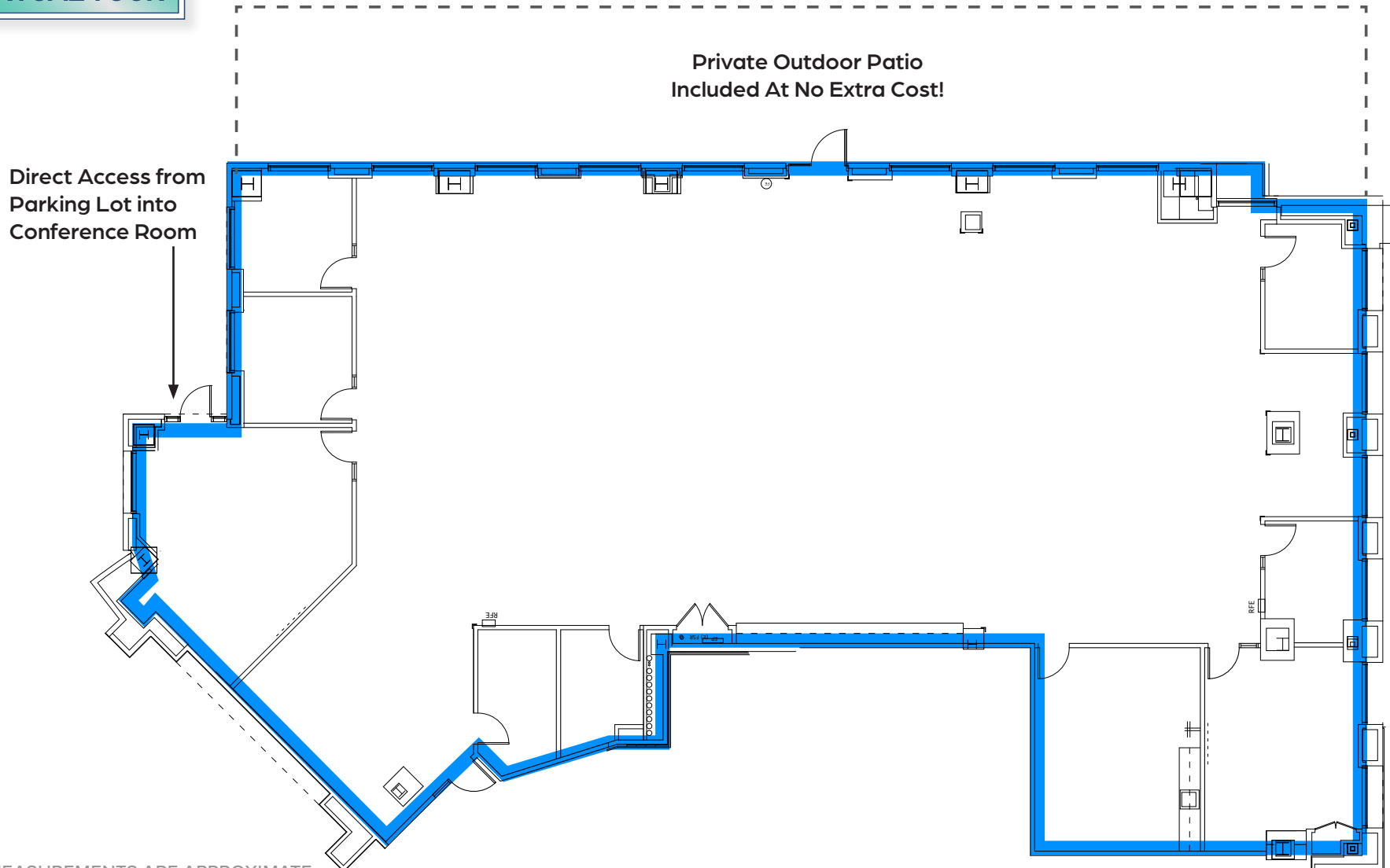
±1,297–4,561 RSF | *Contiguous* | *Office/Retail on the 1st Floor*



# SUITE 180 | FLOOR PLAN

±7,604 RSF | Office/Retail on the 1st floor

[Click to take  
VIRTUAL TOUR](#)

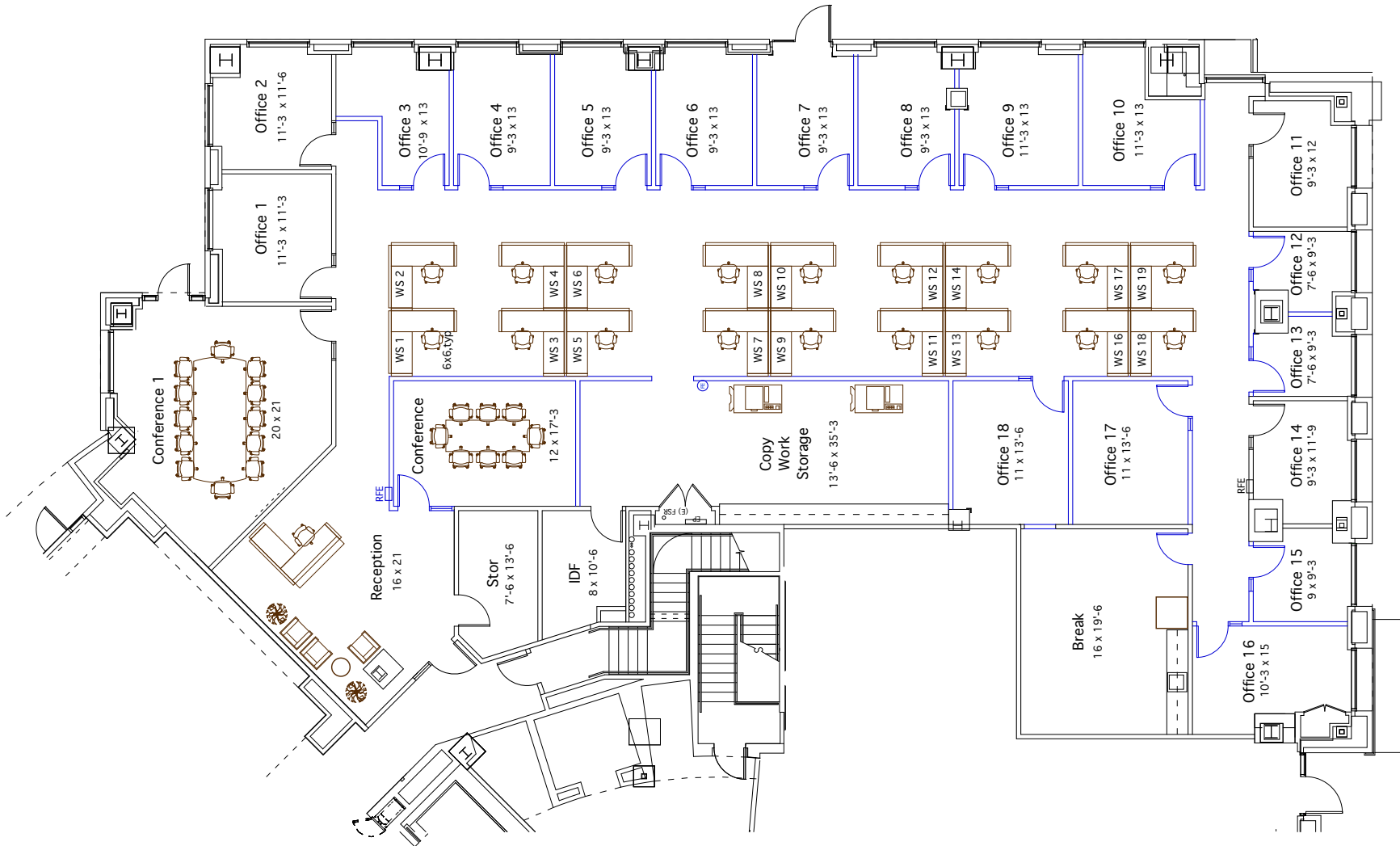


ALL MEASUREMENTS ARE APPROXIMATE

# SUITE 180 | FLOOR PLAN

±7,604 RSF | Office/Retail on the 1st floor

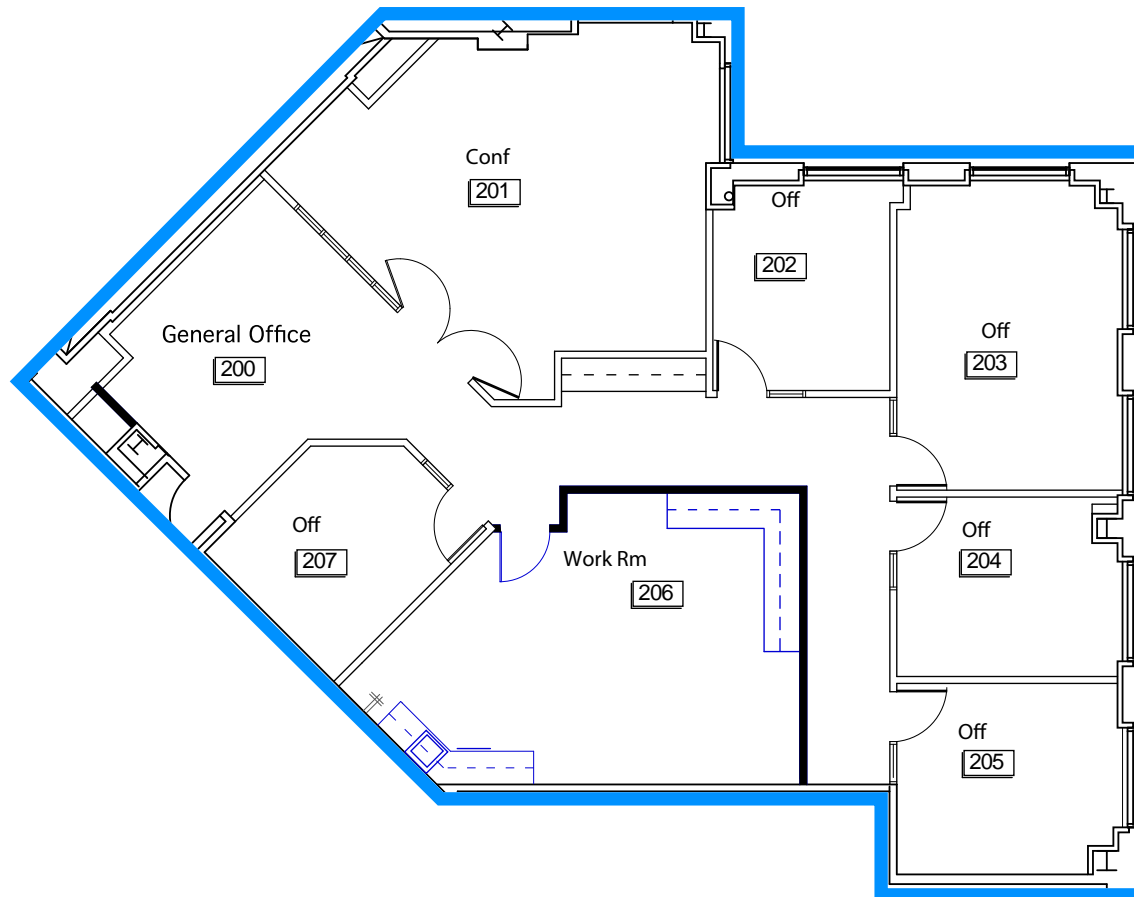
Test-Fit Sample Plan



# SUITE 250 | FLOOR PLAN

±2,870 RSF

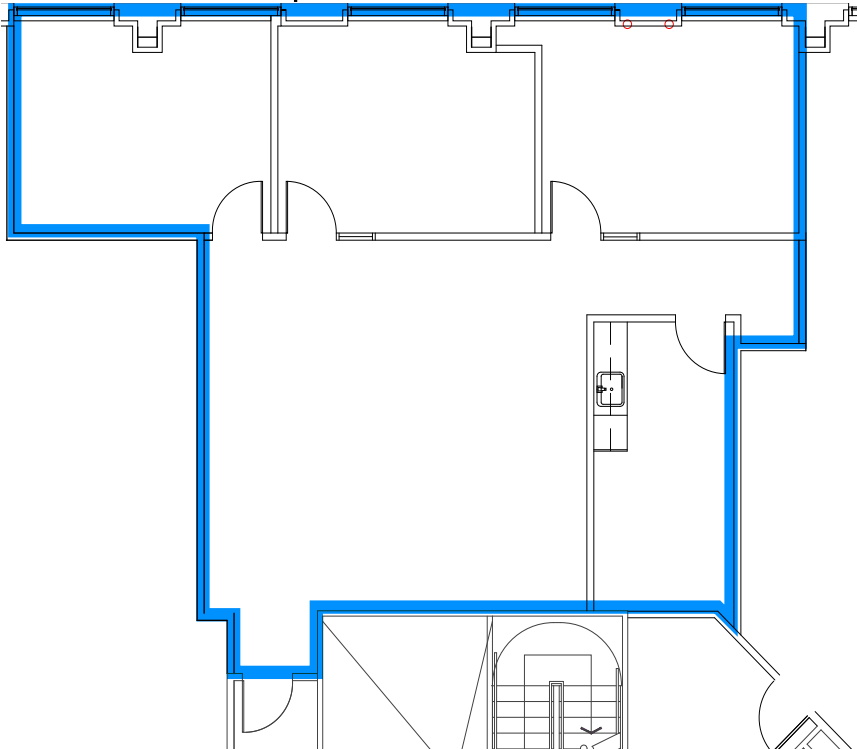
[Click to take  
VIRTUAL TOUR](#)



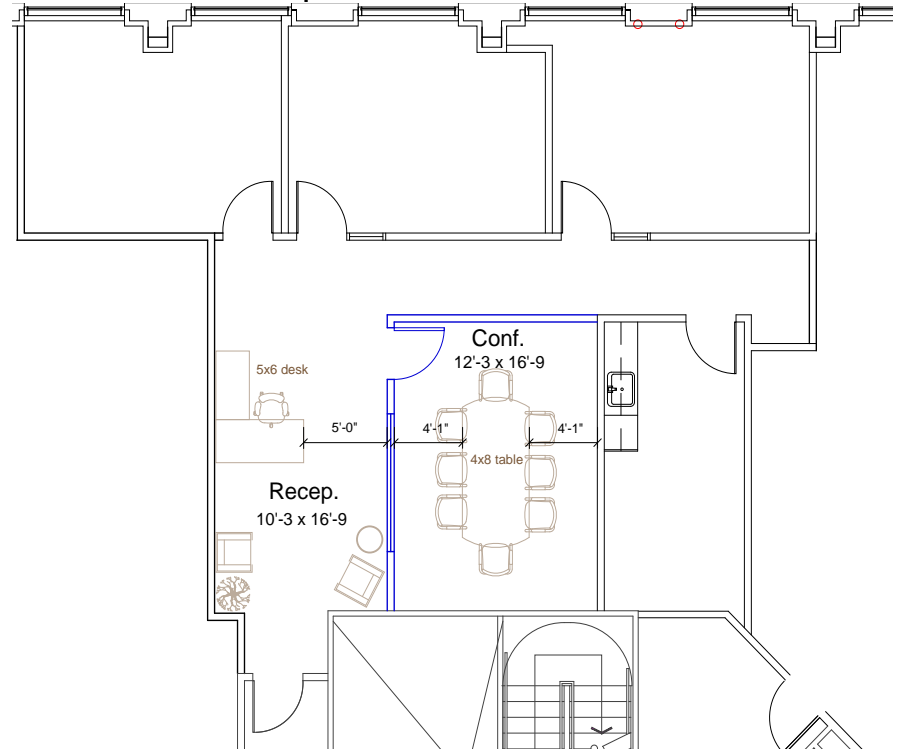
# SUITE 440 | FLOOR PLAN

±1,691-4,841 RSF | *Move-In Ready!* | *Contiguous with Suite 450*

As-Built Plan

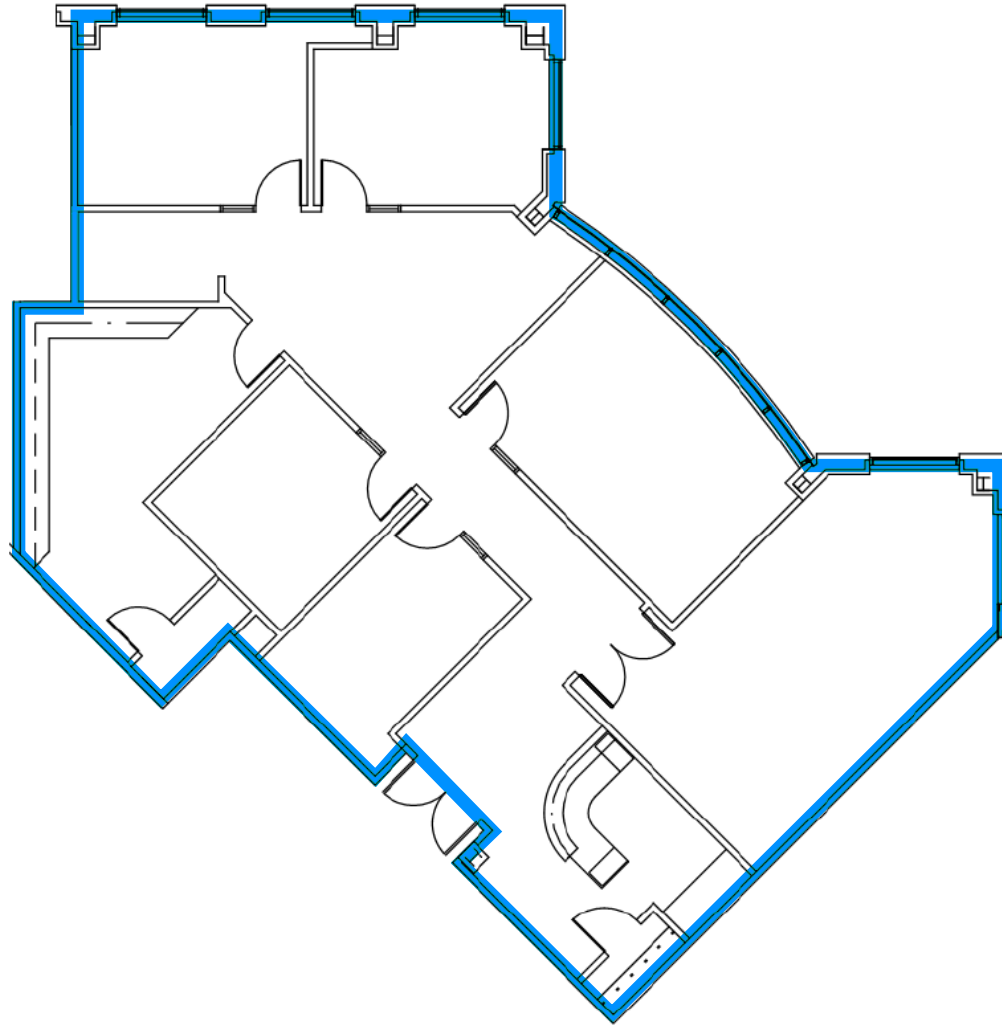


Test-Fit Sample Plan



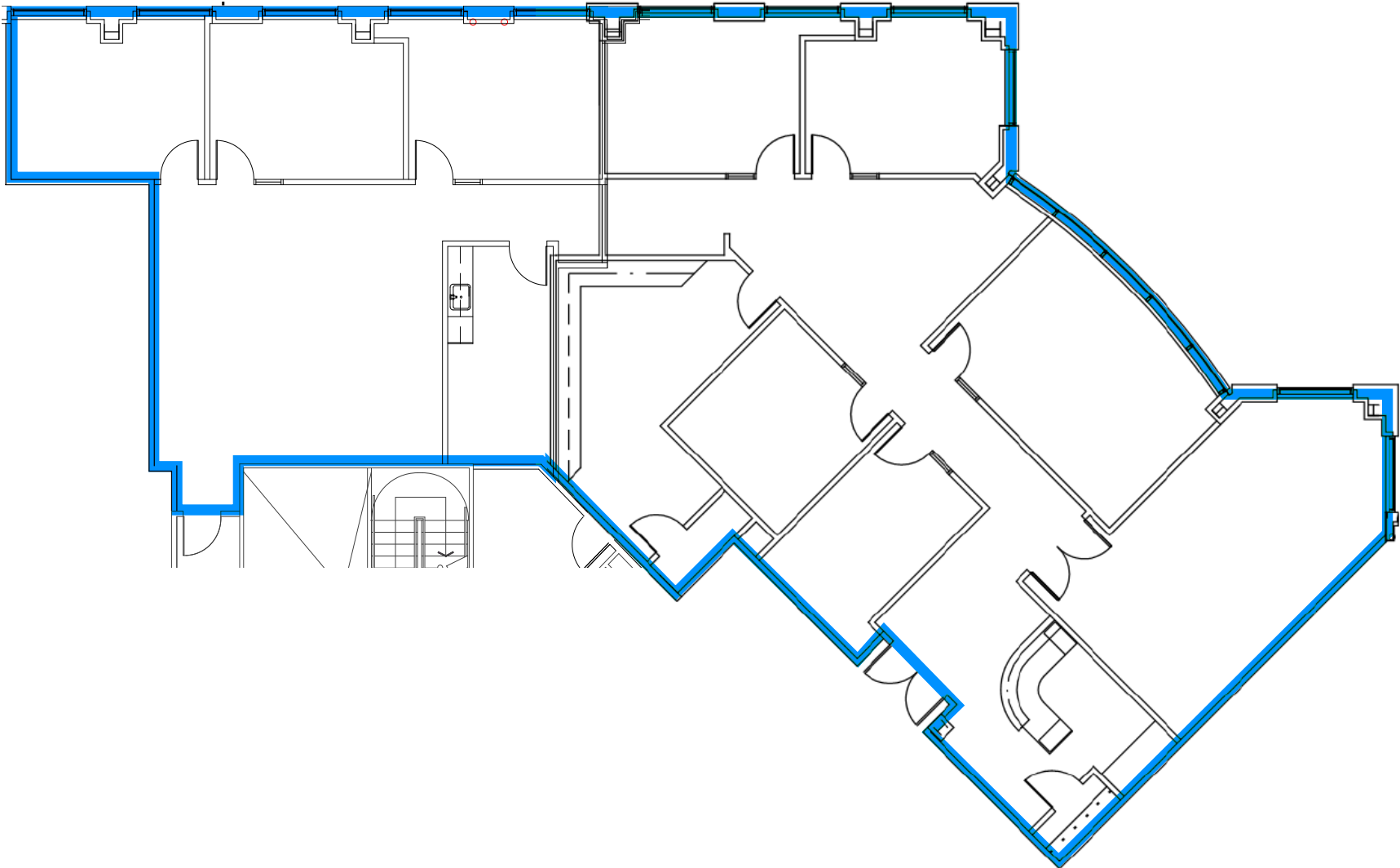
# SUITE 450 | FLOOR PLAN

±3,150–4,841 RSF | *Contiguous with Suite 440*



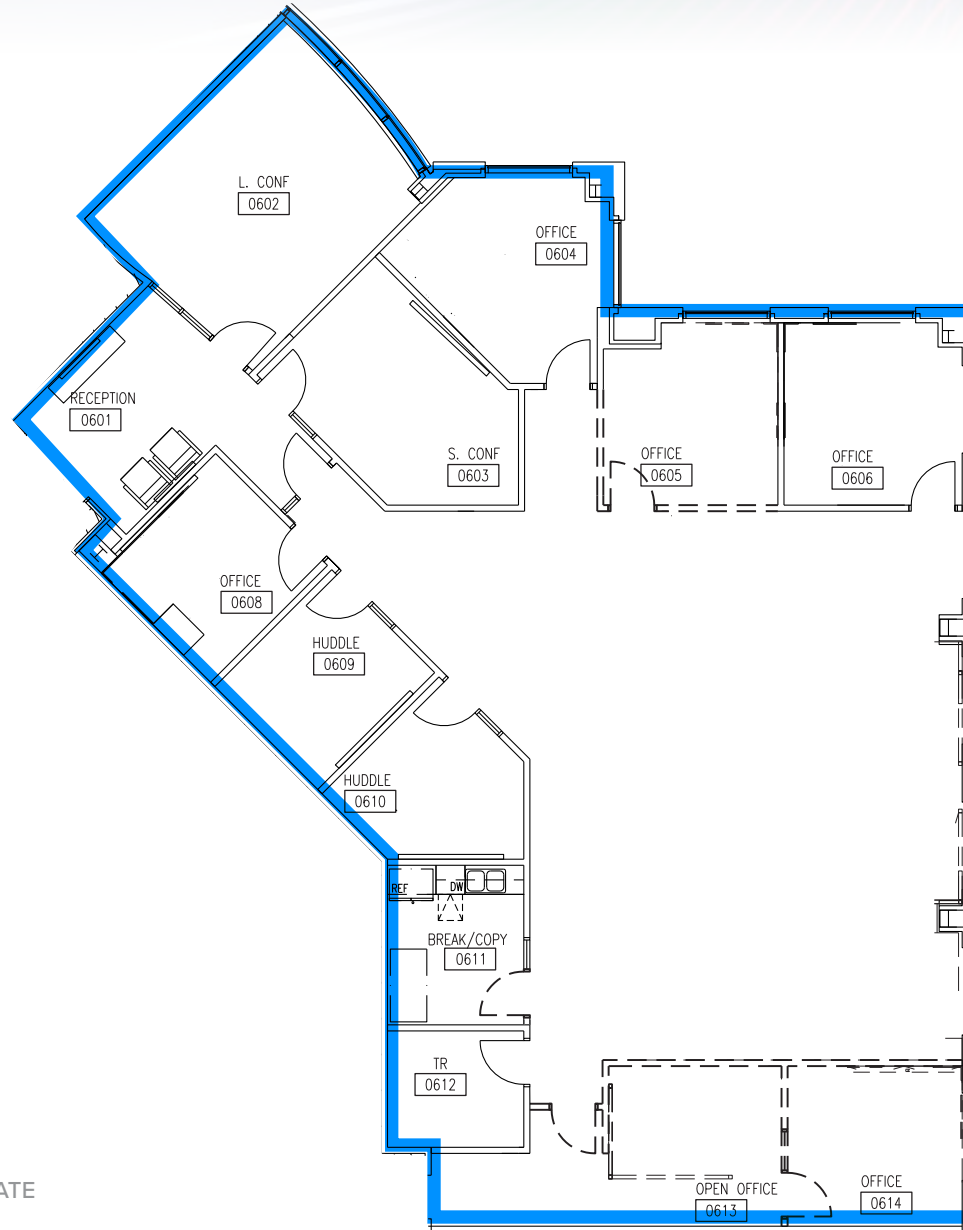
# SUITES 440/450 | FLOOR PLAN

±4,841 RSF | *Contiguous*



# SUITE 650 | FLOOR PLAN

±4,354 RSF



ALL MEASUREMENTS ARE APPROXIMATE

# SUITE 740 | FLOOR PLAN

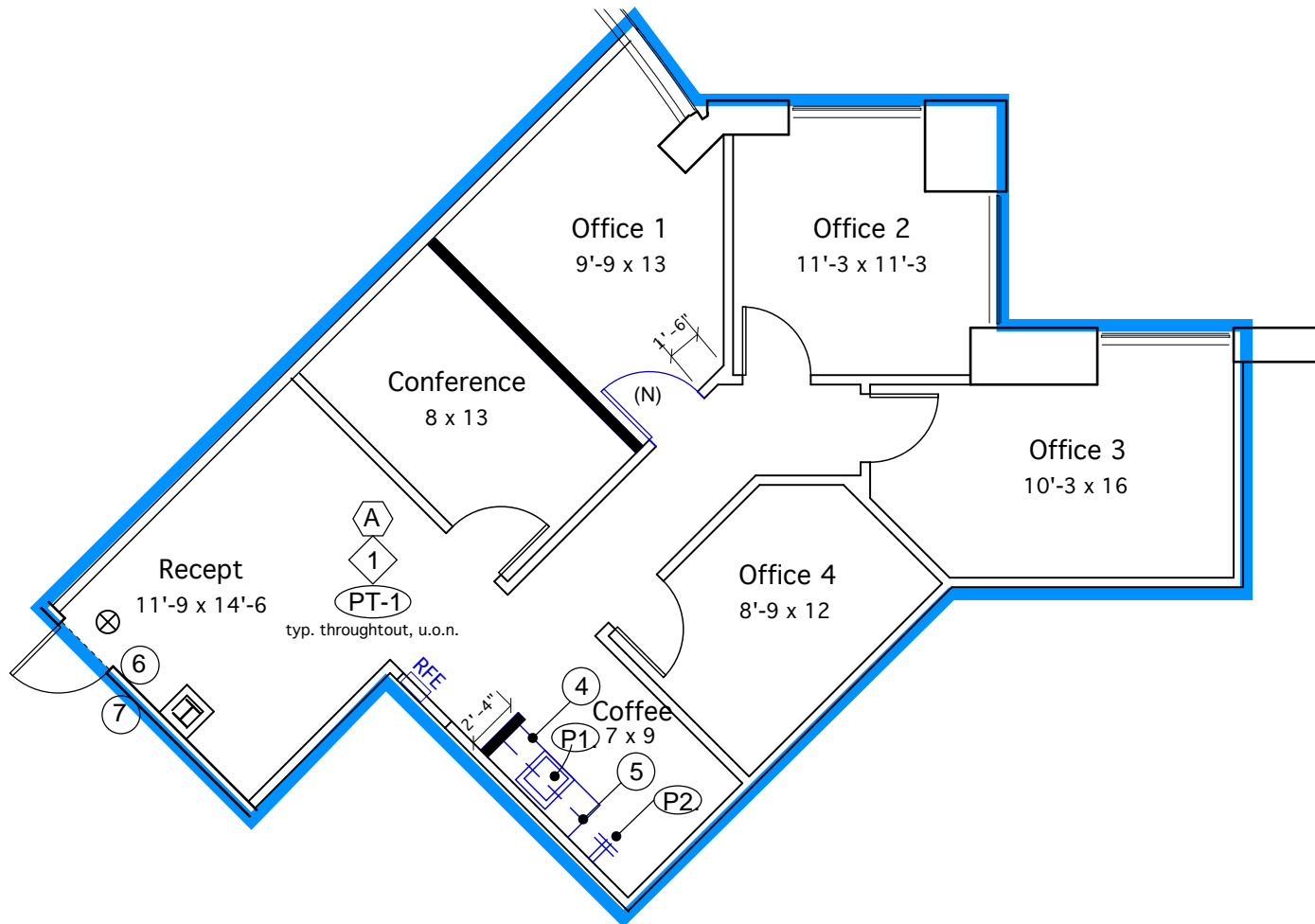
±8,681 RSF | *Move-In-Ready!* | *Plug & Play with Furniture*

[Click to take  
VIRTUAL TOUR](#)



# SUITE 870 | FLOOR PLAN

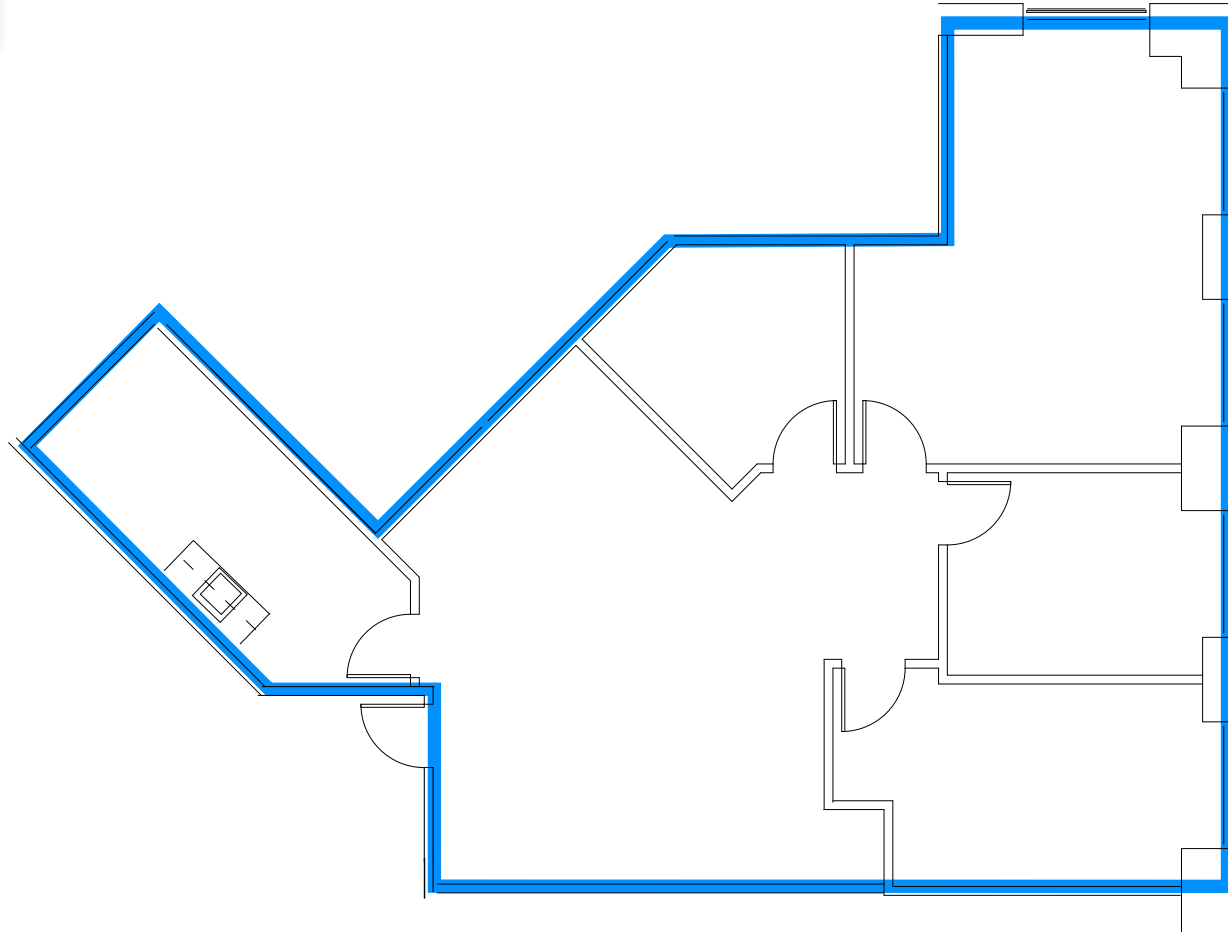
±1,247 RSF | Available 1/1/2027



# SUITE 880 | FLOOR PLAN

±1,610 RSF

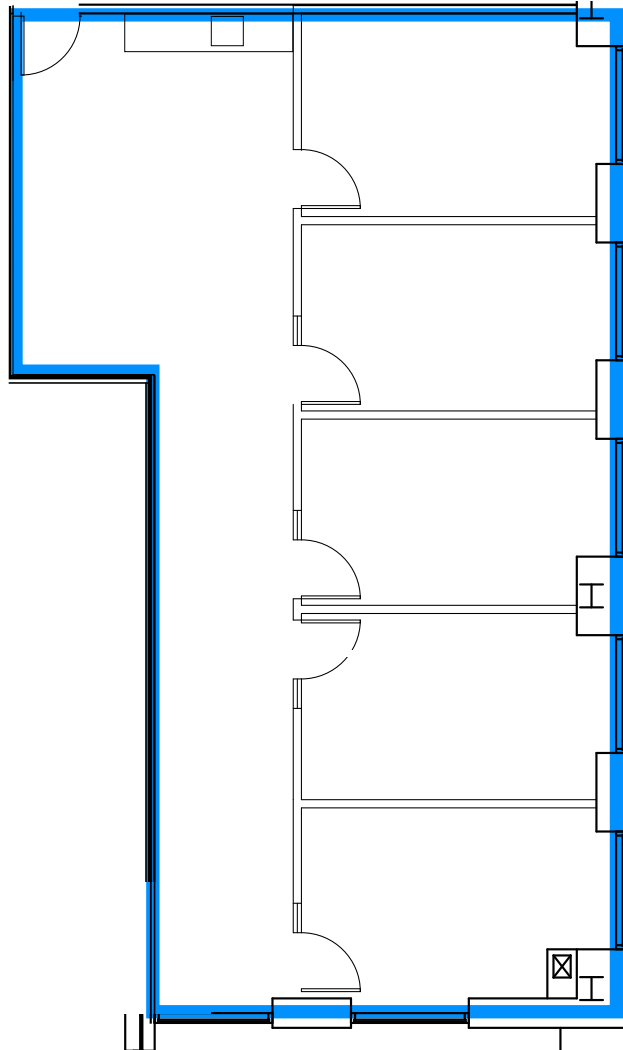
[Click to take  
VIRTUAL TOUR](#)



# SUITE 940 | FLOOR PLAN

±1,655 RSF | *Move-In Ready!*

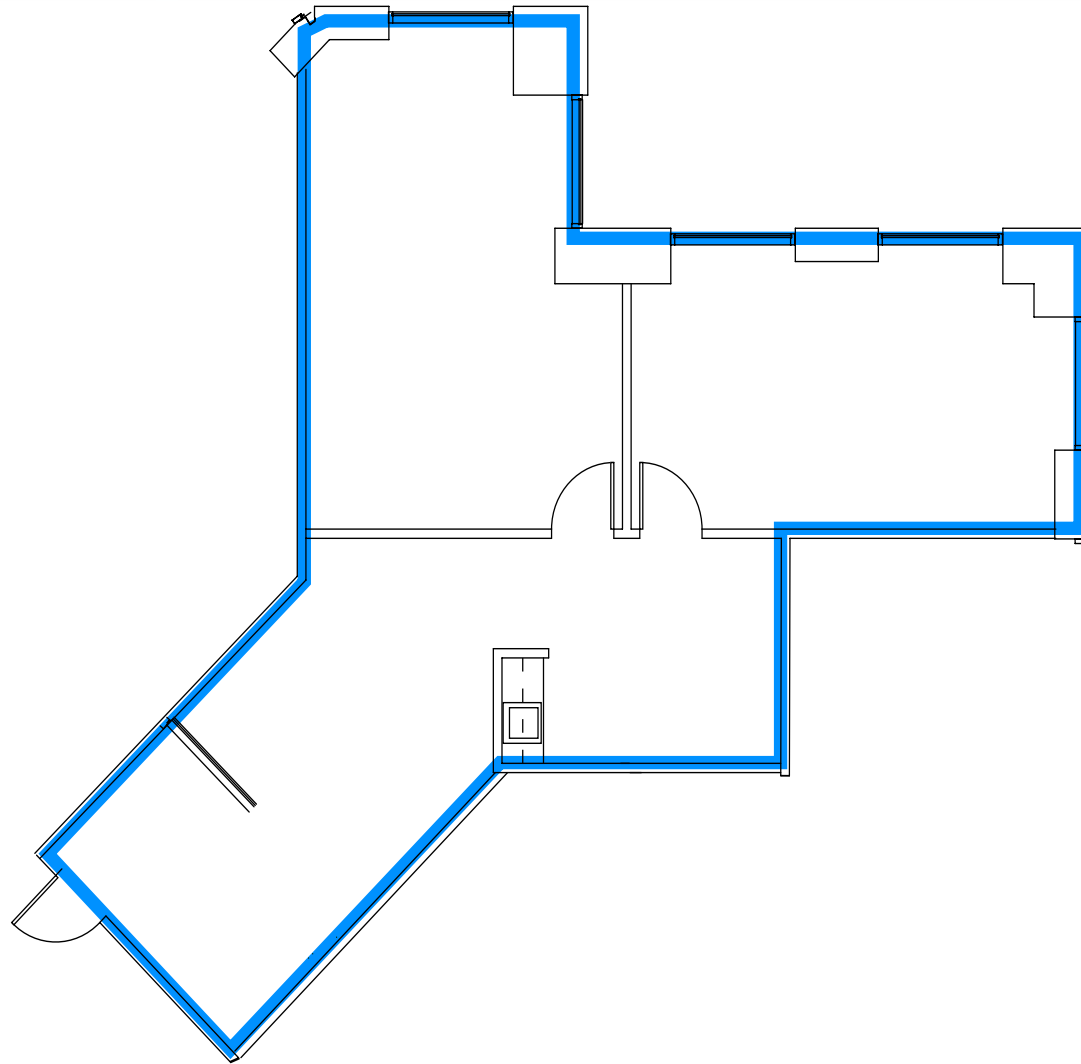
[Click to take  
VIRTUAL TOUR](#)



# SUITE 1185 | FLOOR PLAN

±1,308 RSF | *Move-In Ready!*

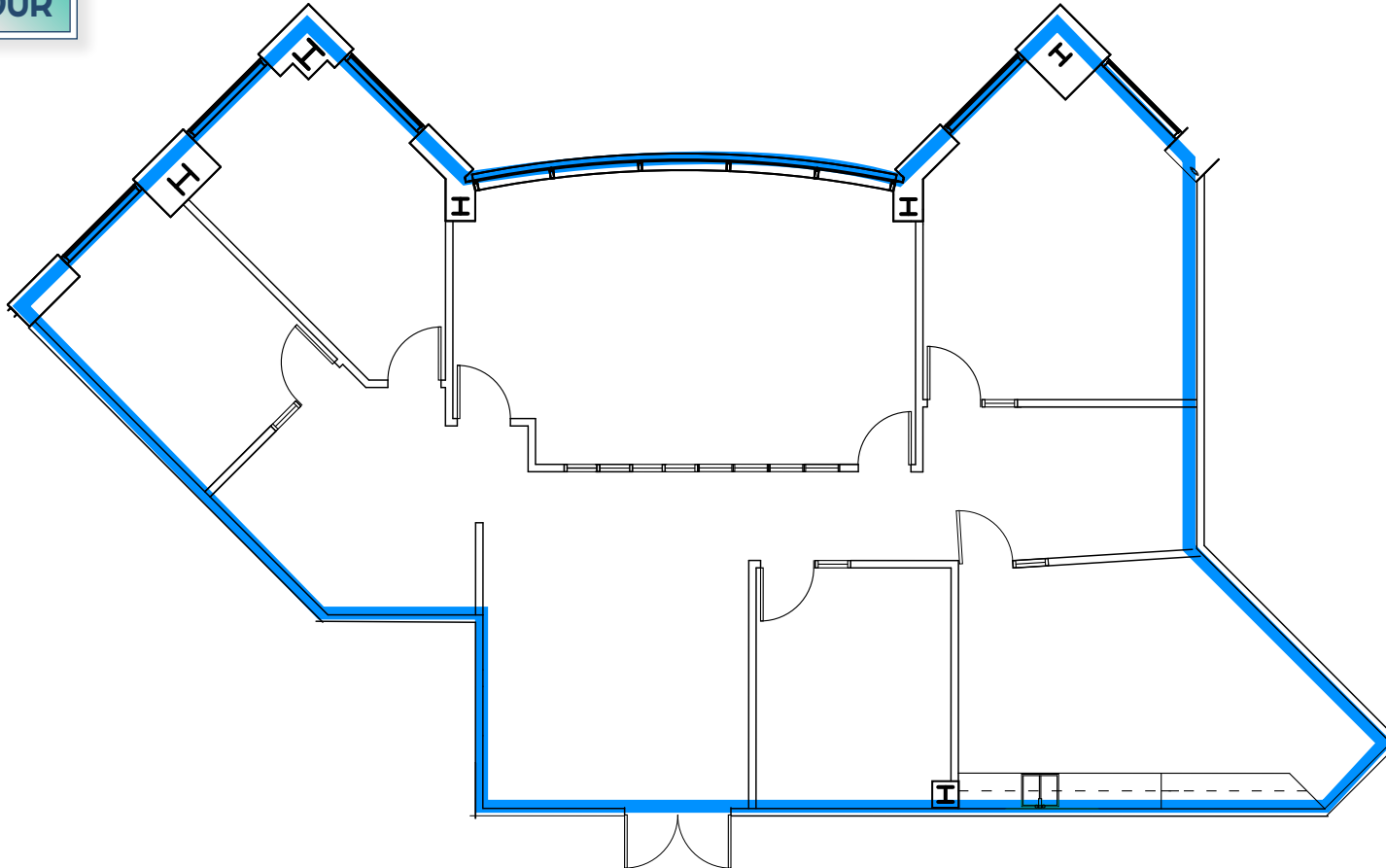
[Click to take  
VIRTUAL TOUR](#)



# SUITE 1240 | FLOOR PLAN

±2,664 RSF | *Move-In Ready!* | *Plug & Play with Furniture*

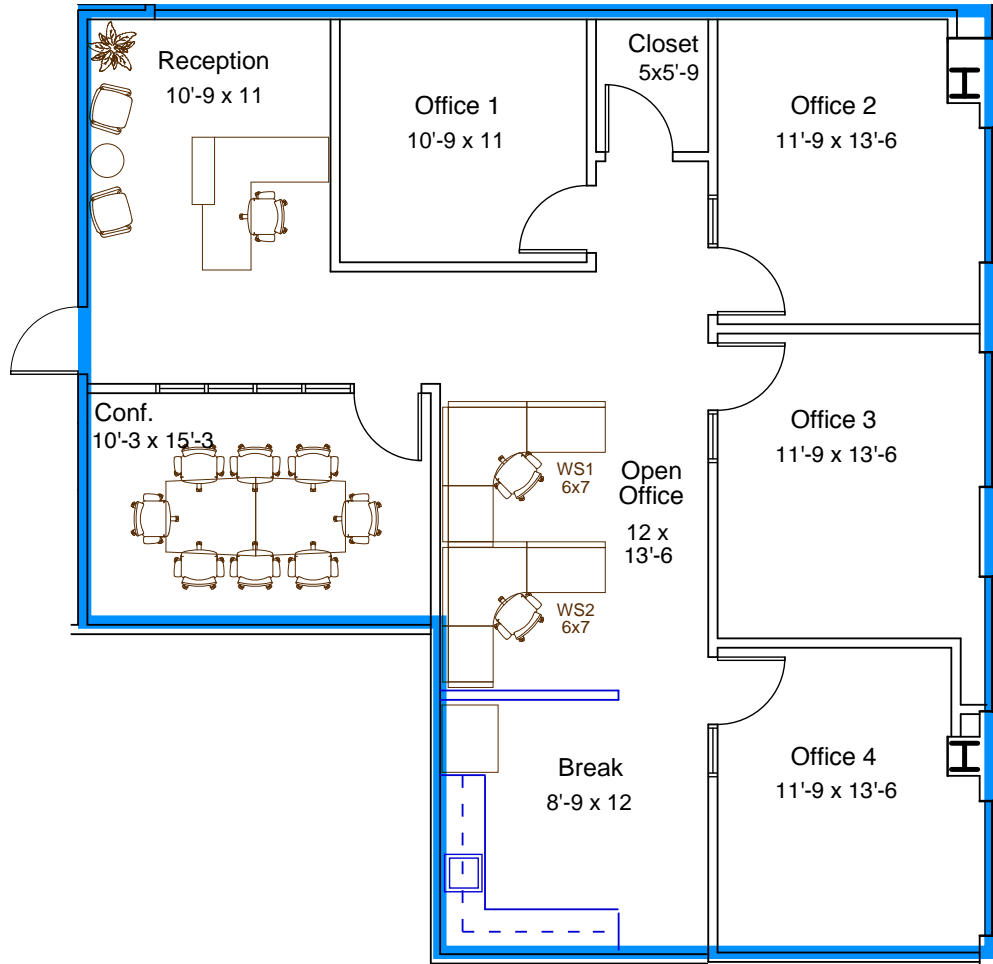
Click to take  
VIRTUAL TOUR



# SUITE 1260 | FLOOR PLAN

±1,768–3,318 RSF | *Move-In Ready!* | *Contiguous to Suite 1280*

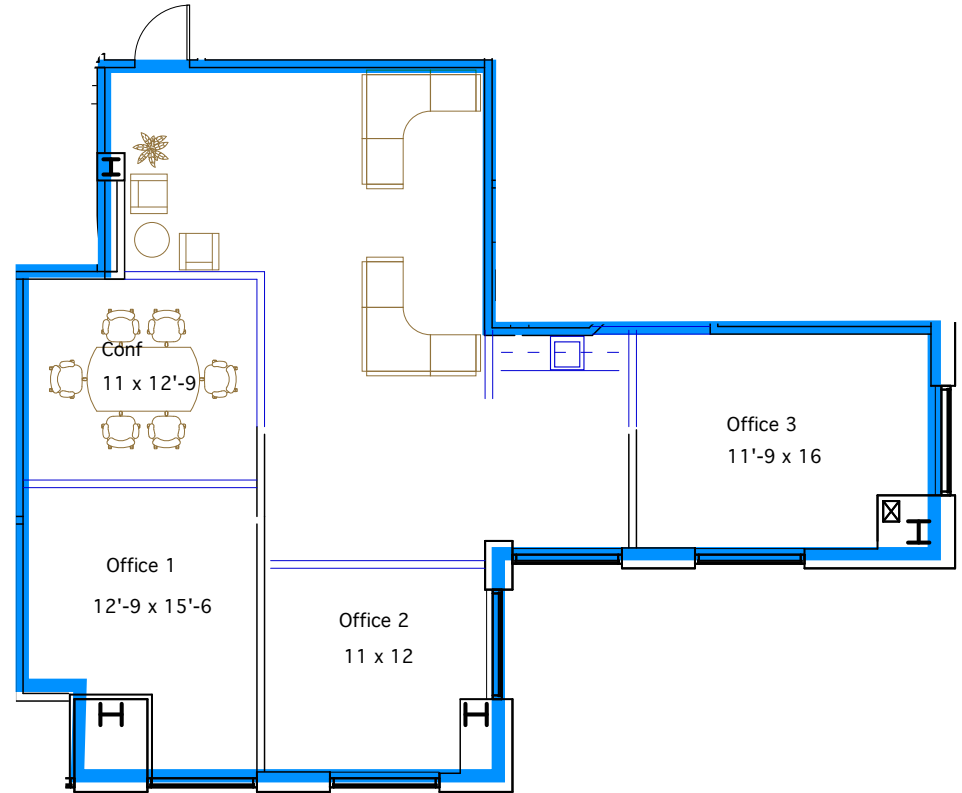
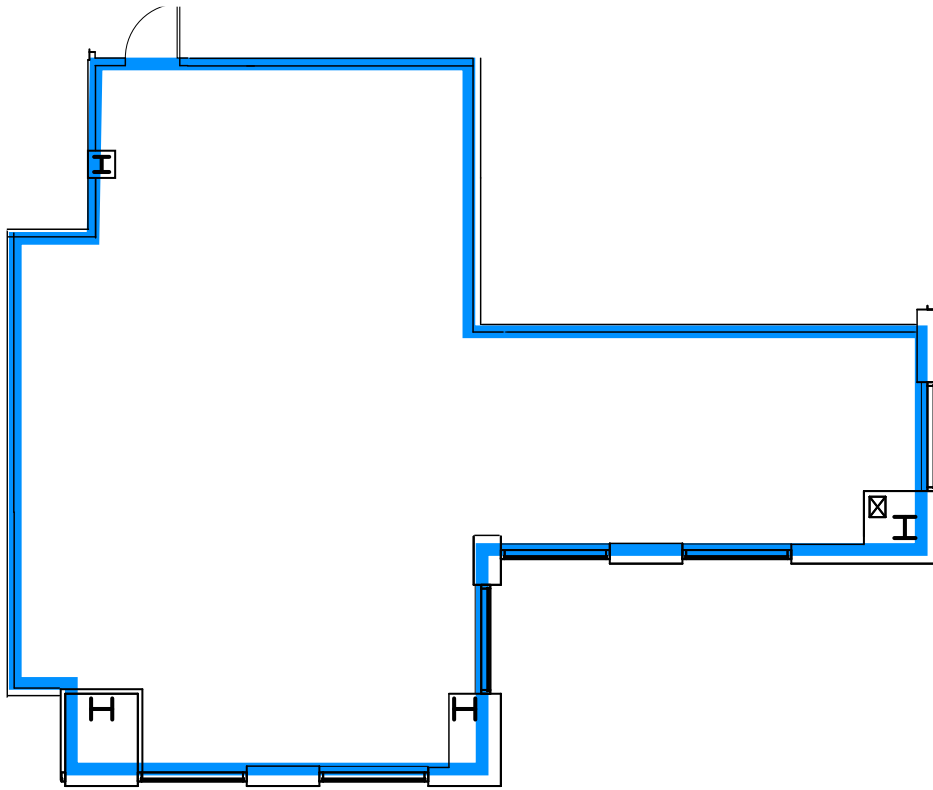
[Click to take  
VIRTUAL TOUR](#)



# SUITE 1280 | FLOOR PLAN

±1,550–3,318 RSF | *Contiguous to Suite 1260*

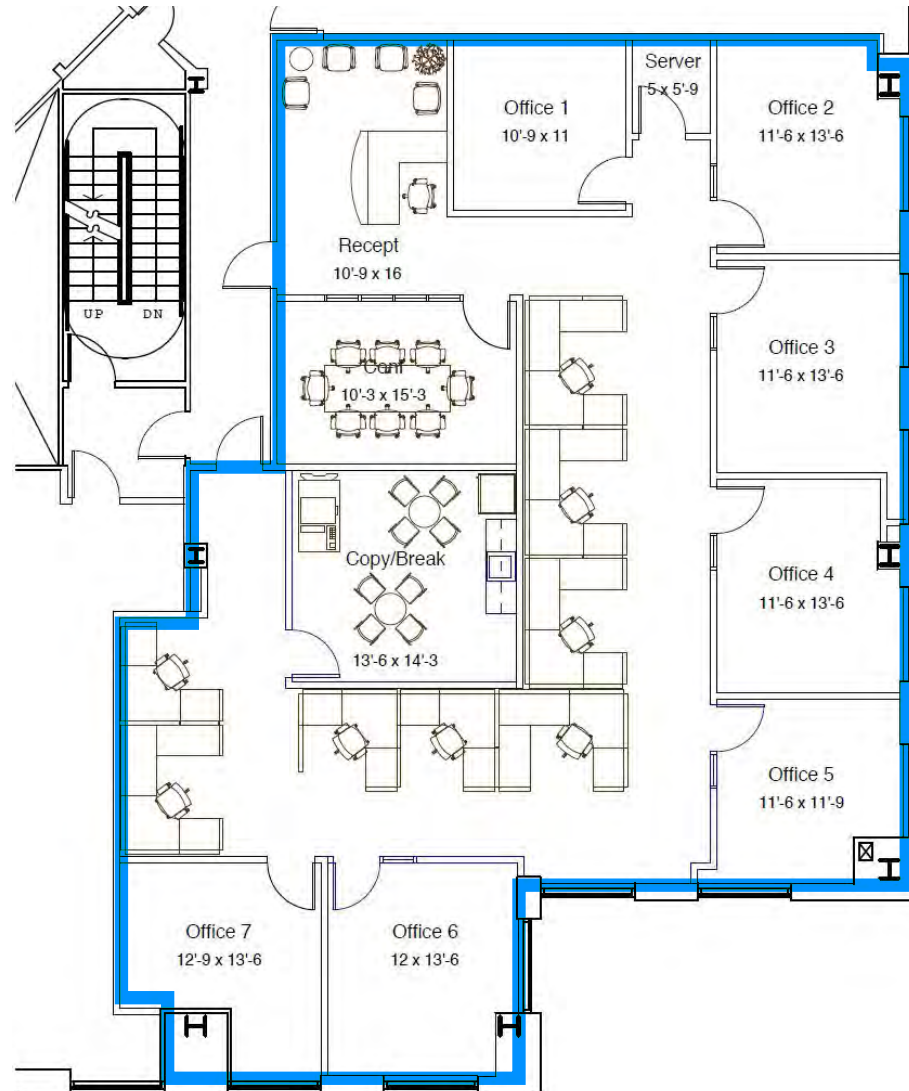
Test-Fit Sample Plan



# SUITES 1260/1280 | FLOOR PLAN

±3,318 RSF | *Contiguous*

Test-Fit Sample Plan



ALL MEASUREMENTS ARE APPROXIMATE

FOR LEASE | CLASS A OFFICE | DOWNTOWN SACRAMENTO

# MERIDIAN PLAZA

FOR MORE INFORMATION, PLEASE CONTACT:

**TONY WHITTAKER**

Senior Vice President

+1 916 492 6914

Lic. 01780828

tony.whittaker@cbre.com

**NELLIE CRUZ**

Vice President

+1 916 492 6915

Lic. 02086140

nellie.cruz@cbre.com

**CBRE**

© 2026 CBRE, Inc. All rights reserved. This information has been obtained from sources believed reliable, but has not been verified for accuracy or completeness. You should conduct a careful, independent investigation of the property and verify all information. Any reliance on this information is solely at your own risk. CBRE and the CBRE logo are service marks of CBRE, Inc. All other marks displayed on this document are the property of their respective owners, and the use of such logos does not imply any affiliation with or endorsement of CBRE. Photos herein are the property of their respective owners. Use of these images without the express written consent of the owner is prohibited. PMStudio\_June2026

1415 L STREET | SACRAMENTO, CA