

# Westpark Building J

Suite 110

8561 154th Ave NE  
Redmond, WA 98052  
[www.cbre.com/bellevue](http://www.cbre.com/bellevue)

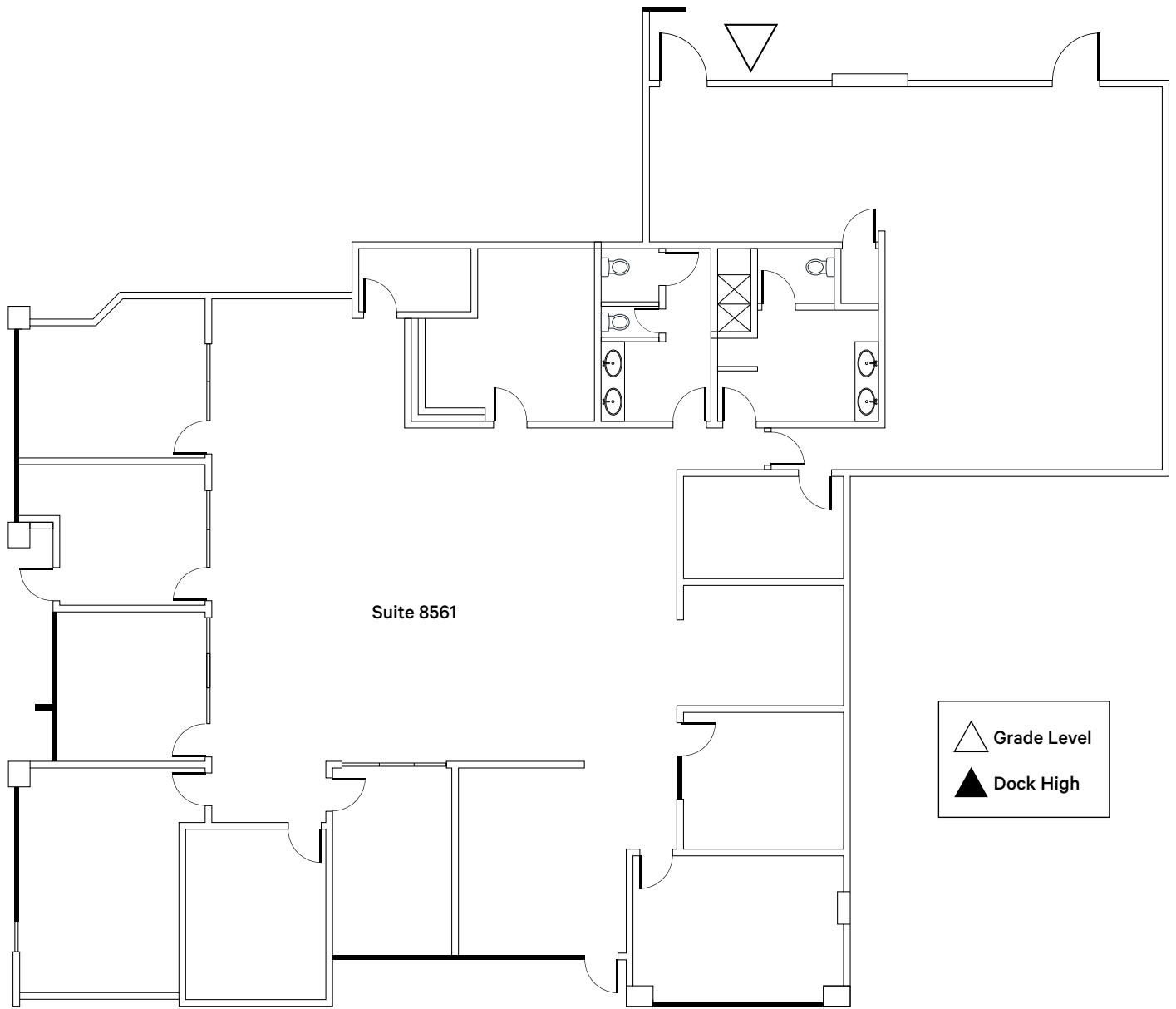


## Property Details

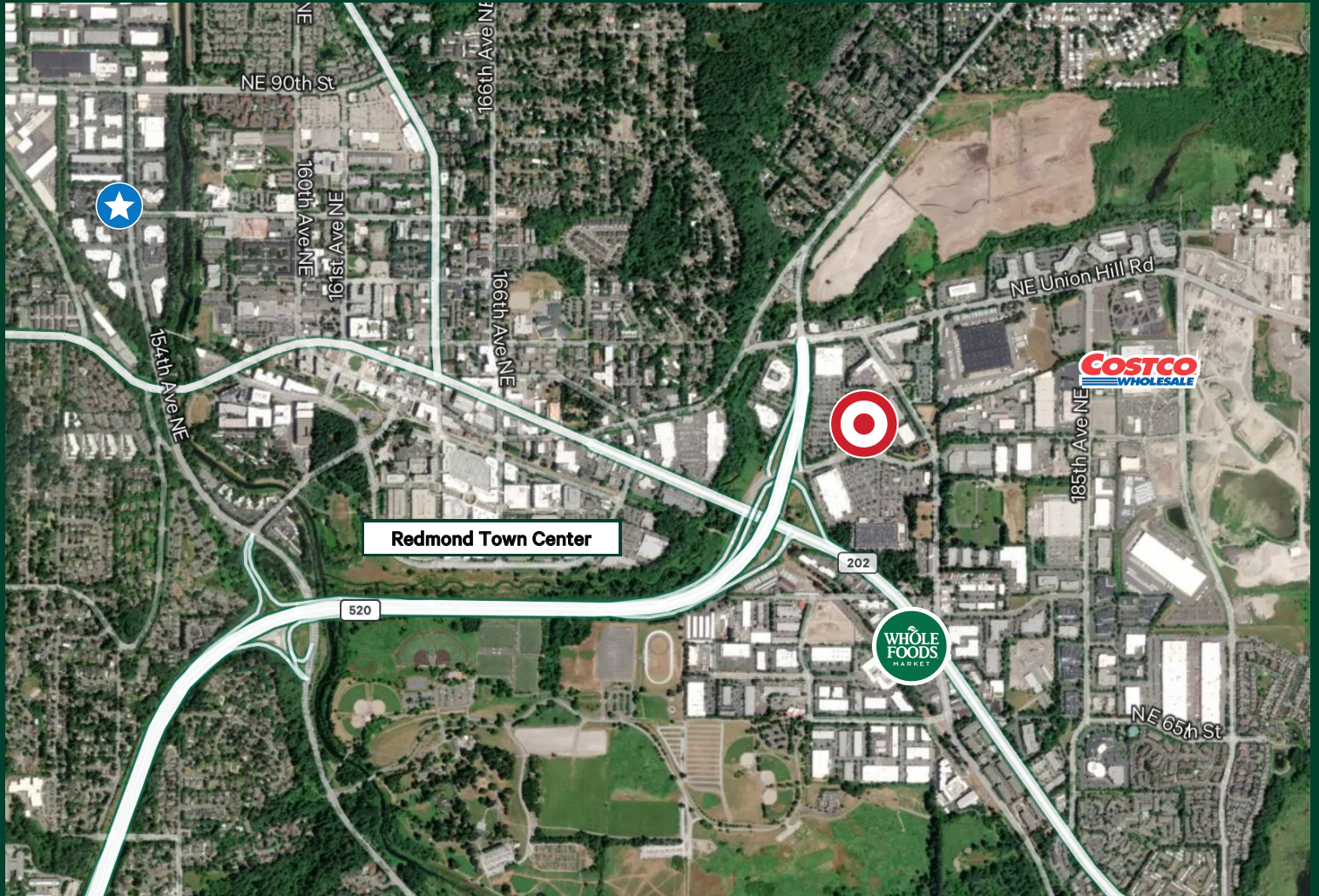
Suite 110

- + 5,732 SF
- + Lease Expiration: December 31, 2027
- + Minutes from SR-520
- + Fully conditioned warehouse
- + Amenity Rich Location
- + Mix of private offices and warehouse space with grade level loading with roll-up door

# Floor Plan



# Area Map



## Contact Us

**Brian Biege**

Executive Vice President  
+1 425 462 6914  
brian.biege@cbre.com

**Bryan Oliver**

Senior Vice President  
+1 425 749 9903  
bryan.oliver@cbre.com

**Jacob Hamlin**

Vice President  
+1 425 319 7252  
jacob.hamlin@cbre.com

© 2026 CBRE, Inc. All rights reserved. This information has been obtained from sources believed reliable, but has not been verified for accuracy or completeness. You should conduct a careful, independent investigation of the property and verify all information. Any reliance on this information is solely at your own risk. CBRE and the CBRE logo are service marks of CBRE, Inc. All other marks displayed on this document are the property of their respective owners, and the use of such logos does not imply any affiliation with or endorsement of CBRE. Photos herein are the property of their respective owners. Use of these images without the express written consent of the owner is prohibited. DW\_4.21.26