

FOR LEASE

±1,813 RSF  
AVAILABLE

# 2020 V Street

*Vibrant Office Building in  
Midtown Sacramento*

**CBRE**

# Building Highlights



1,813 RSF  
AVAILABLE OFFICE SPACE



Common  
conference room  
with break room



Parking  
2.0/1,000



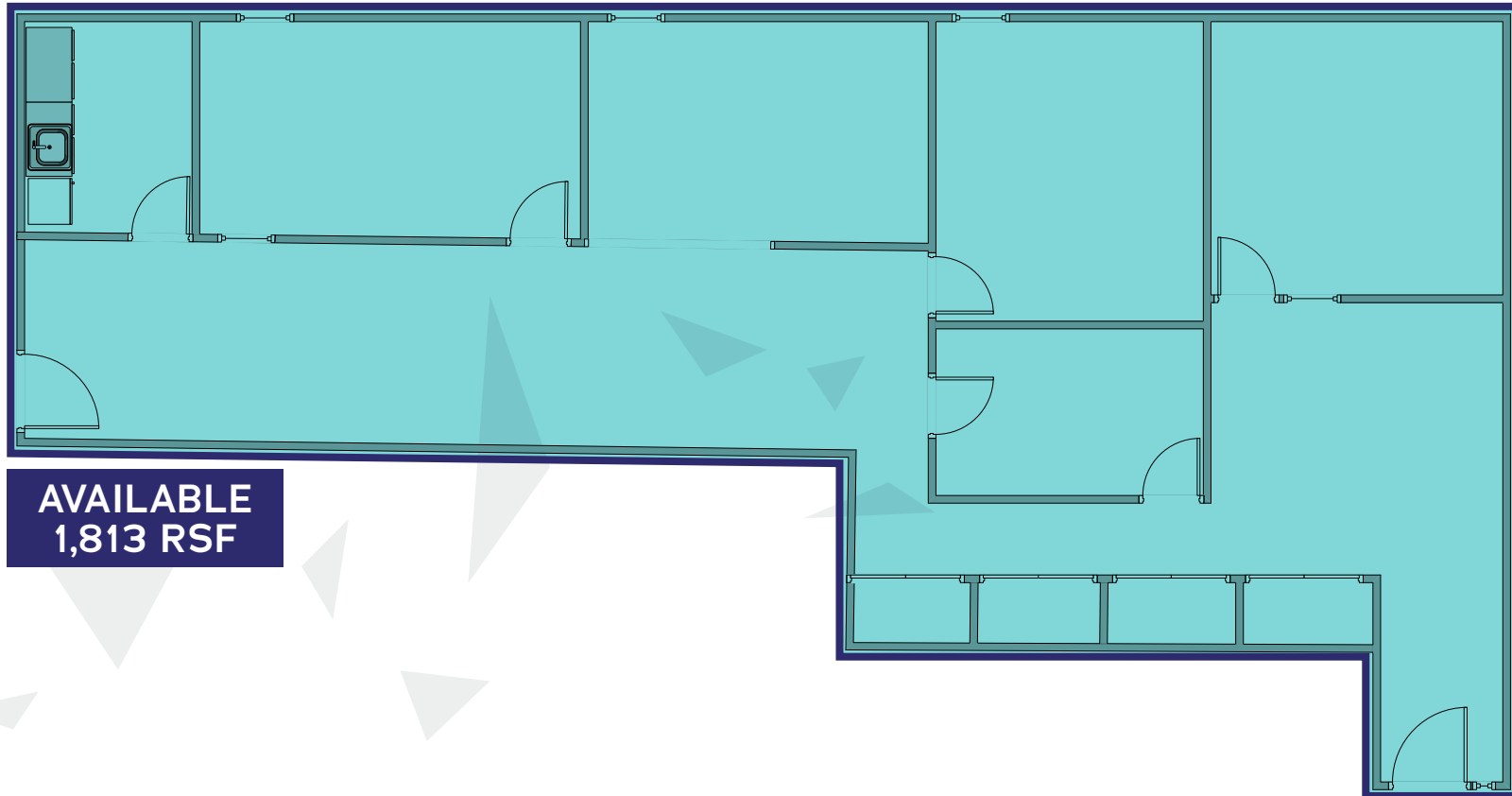
Walking distance  
to retail, restaurants, and residential



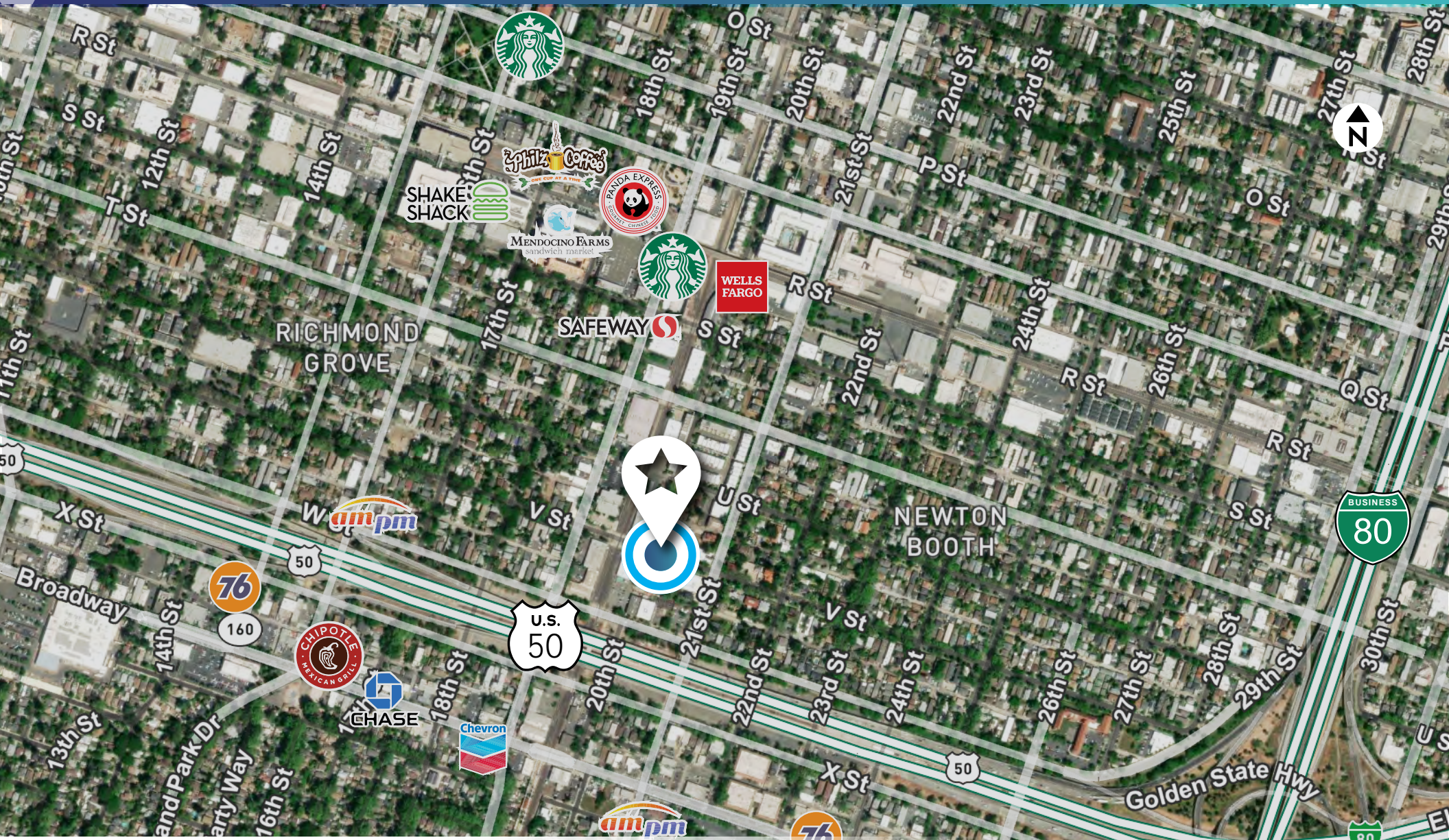
Located in Midtown,  
the heart of Sacramento's  
Live-Work-Play environment



# Floor Plan Office Space



**AVAILABLE  
1,813 RSF**



# Nearby Amenities

Smart & Final

**FOR LEASE**

**±1,813 RSF  
AVAILABLE**

# 2020 **V** Street

## Contact Us

**TONY WHITTAKER**

Senior Vice President

+1 916 492 6914

Tony.Whittaker@cbre.com

Lic. 01780828

**NELLIE CRUZ**

Vice President

+1 916 492 6915

Nellie.Cruz@cbre.com

Lic. 02086140

**HAYDEN NABERS**

Associate

+1 916 446 8207

Hayden.Nabers@cbre.com

Lic. 02231233

[www.cbre.com/sacramento](http://www.cbre.com/sacramento)

© 2026 CBRE, Inc. All rights reserved. This information has been obtained from sources believed reliable, but has not been verified for accuracy or completeness. You should conduct a careful, independent investigation of the property and verify all information. Any reliance on this information is solely at your own risk. CBRE and the CBRE logo are service marks of CBRE, Inc. All other marks displayed on this document are the property of their respective owners, and the use of such logos does not imply any affiliation with or endorsement of CBRE. Photos herein are the property of their respective owners. Use of these images without the express written consent of the owner is prohibited. PMStudio\_May2026

**CBRE**