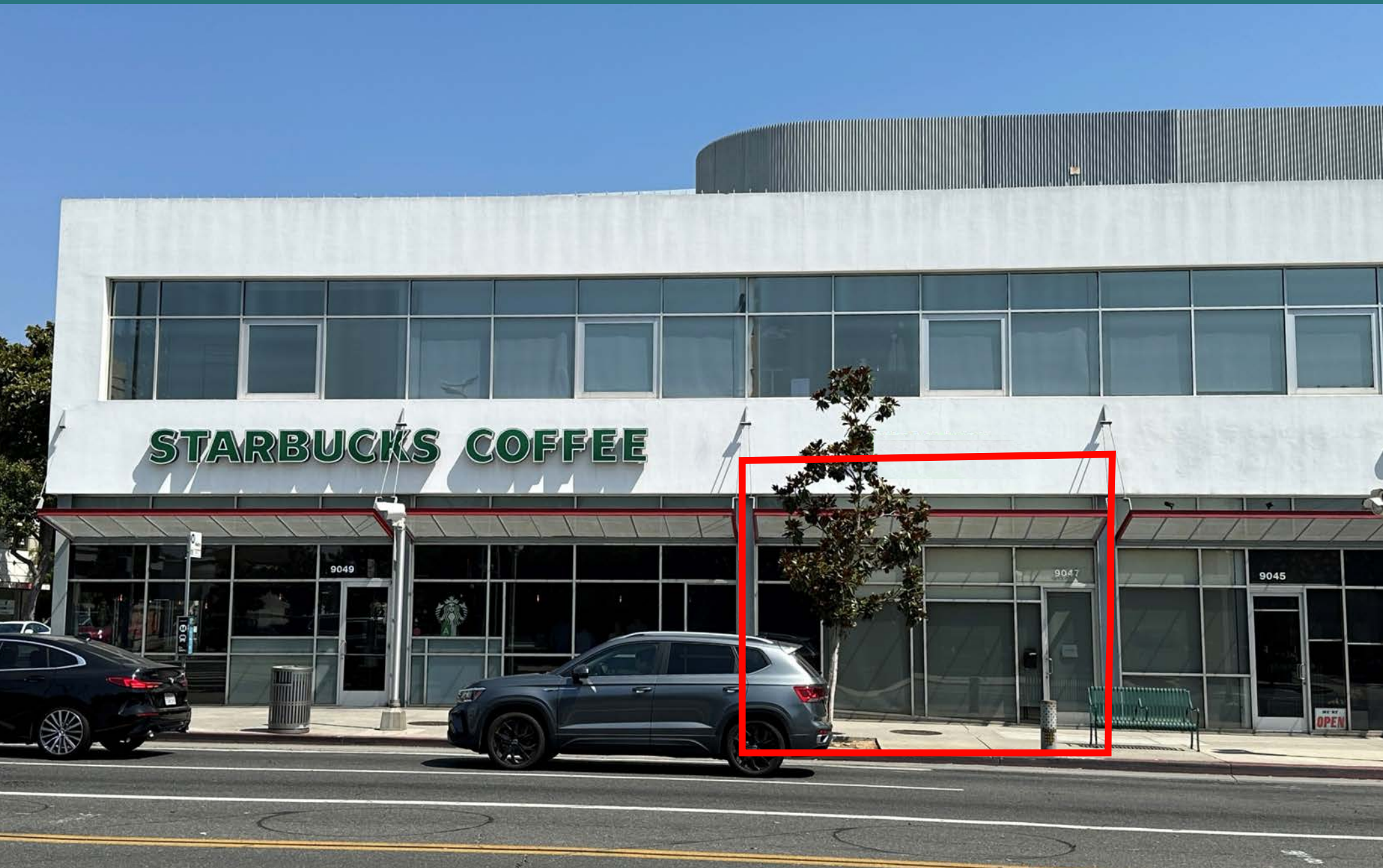


9047 W OLYMPIC BLVD

BEVERLY HILLS, CA 90212

RETAIL SPACE FOR LEASE





WELCOME TO BEVERLY HILLS

9047 Olympic Blvd, sits within one of the most revered and coveted retail locales not just in the United States, but globally. The strength of the real estate in Beverly Hills and its extremely close proximity to some of the world's most affluent consumers ensures that the space will meet the expectations of the highest quality retail professionals and related occupiers.

\$1.76B

CONSUMER
SPENDING

\$2.08M

AVG. HH.
NET WORTH

22,836

TOTAL
POPULATION

7,752

LOCAL BUSINESS

PROPERTY HIGHLIGHTS



LOCATION

In the heart of Beverly Hills at the signalized corner of W Olympic Blvd & S Doheny Dr

SIZE

±761 SF

RENT

Contact Broker for Details

AVAILABLE

Immediately

PARKING

Secure parking in rear

SIGNAGE

Eyebrow Signage

VEHICULAR TRAFFIC

54,000 cars per day (W Olympic Blvd)

NEARBY TENANTS

CLARK STREET



SEABUTTER



MARISA RENFRO Vice President | Lic.#02178774 | +1 310 550 2651 | marisa.renfro@cbre.com



© 2026 CBRE, Inc. All rights reserved. This information has been obtained from reliable sources but has not been verified for accuracy or completeness. CBRE, Inc. makes no guarantee, representation, or warranty and accepts no responsibility or liability for the accuracy, completeness, or reliability of the information contained herein. You should conduct a careful, independent investigation of the property and verify all information. Any reliance on this information is solely at your own risk. CBRE and the CBRE logo are service marks of CBRE, Inc. All other marks displayed on this document are the property of their respective owners, and the use of such marks does not imply any affiliation with or endorsement of CBRE. Photos herein are the property of their respective owners. Use of these images without the express written consent of the owner is prohibited.

CBRE