

Salt Lake Hardware

SUBLEASE

*155 North 400 West
Salt Lake City, UT*



CBRE



*Historic
Charm.
Professional
Presence.*



PROPERTY HIGHLIGHTS

Negotiable
Lease Rate

Flexible
Sublease Terms

Furniture
Available

2/1,000 RSF
Parking Ratio

TRAX/FrontRunner
transfer station on-site

Fitness Center
with showers and locker rooms

Tenant Lounge
shared on the main floor

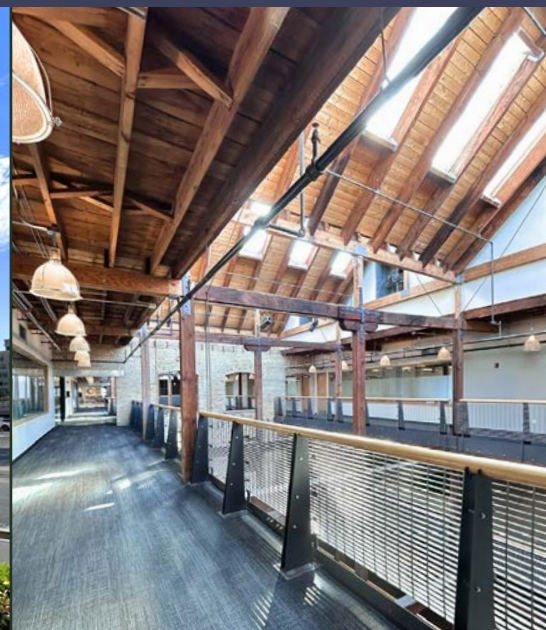
Conference Rooms
shared on the main floor

On-Site Café
located in the main floor

Freeway Access
direct connectivity via I-15 and I-80

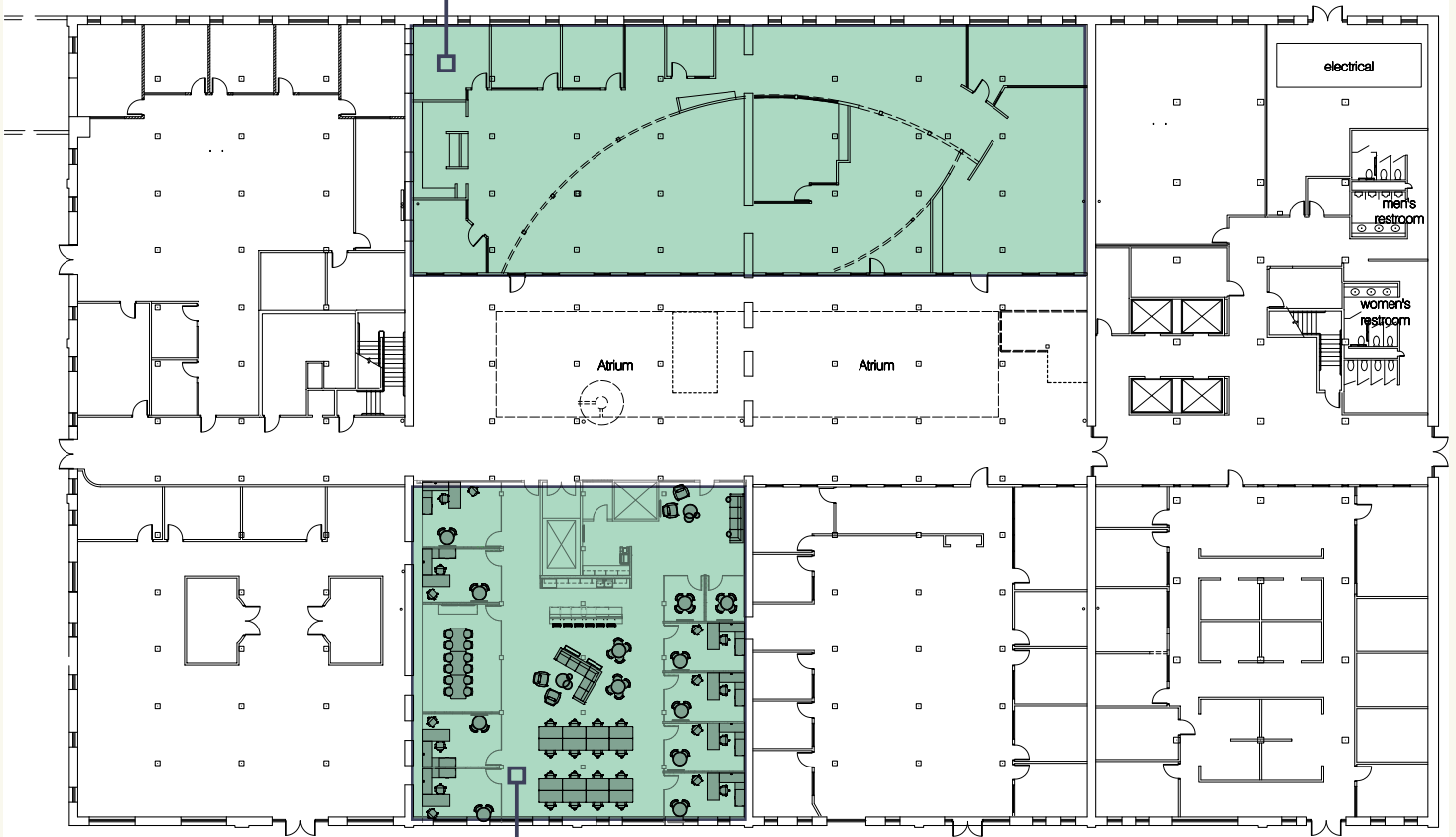
Bike Storage
on-site

Gateway
shopping, dining, entertainment

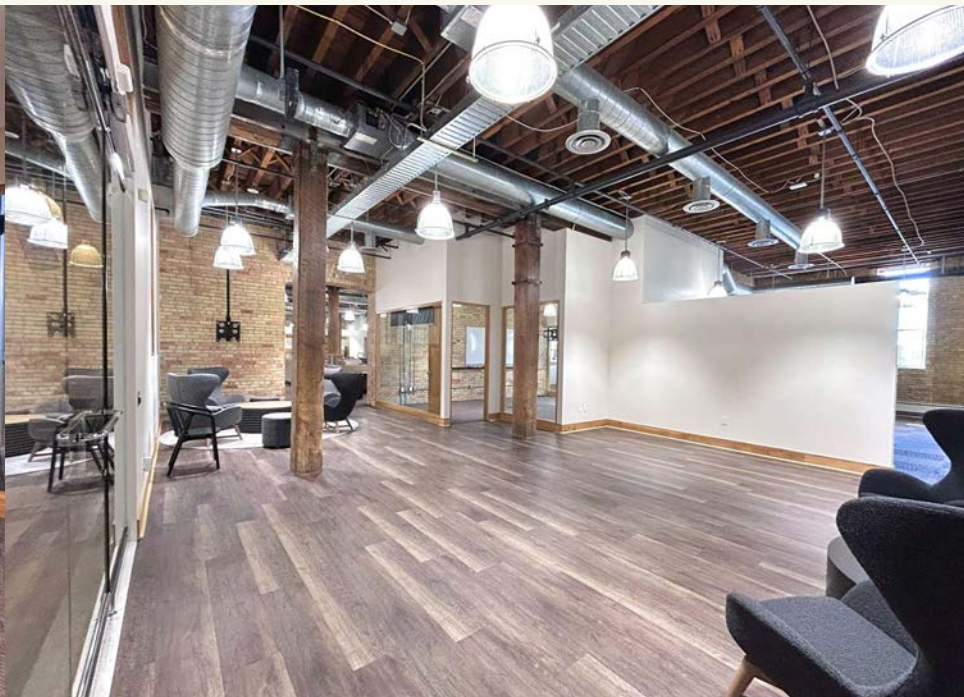


FIRST FLOOR

SUITE 111
8,684 SF AVAILABLE
MAY 31, 2027 LEASE END DATE



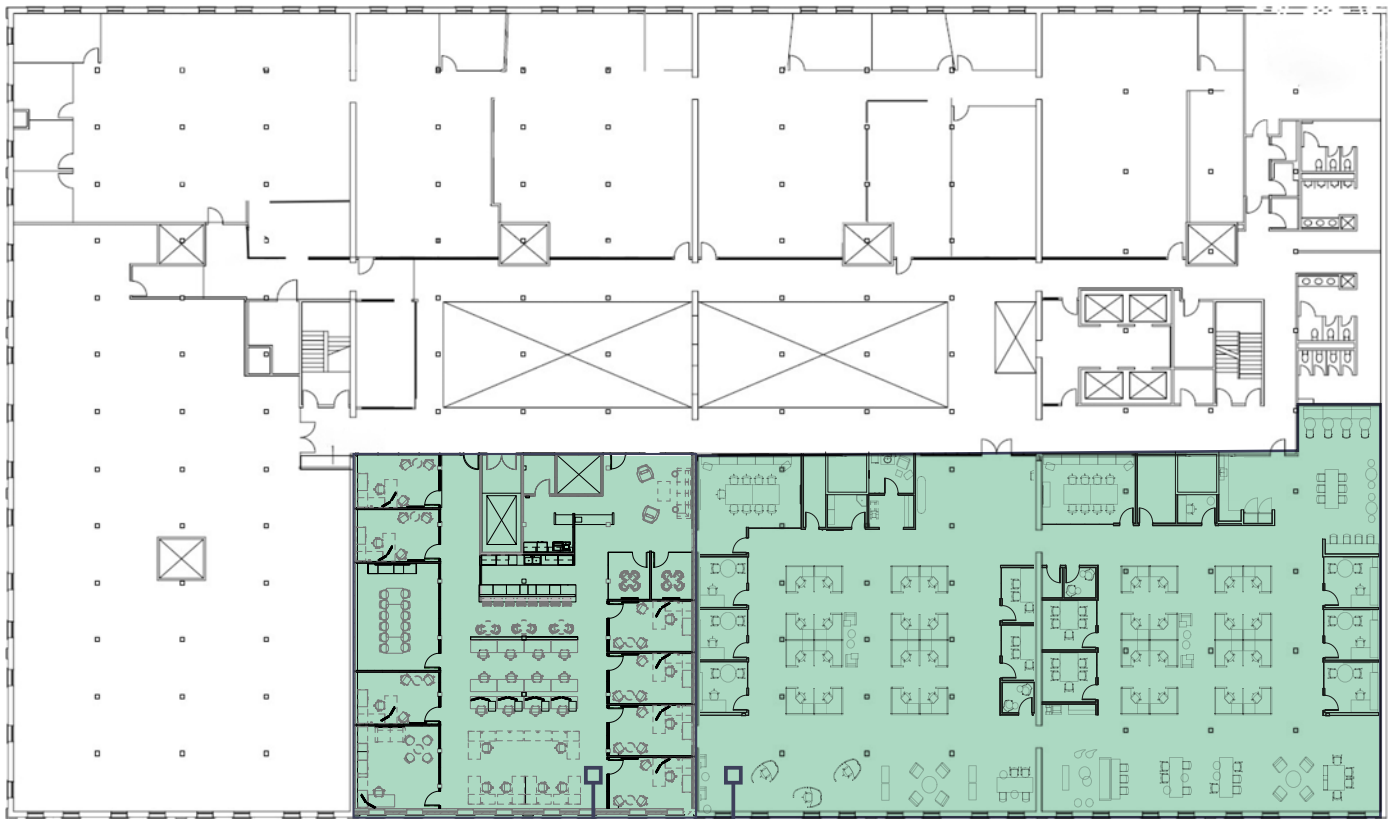
SUITE 150
5,682 SF AVAILABLE
JULY 31, 2030 LEASE END DATE





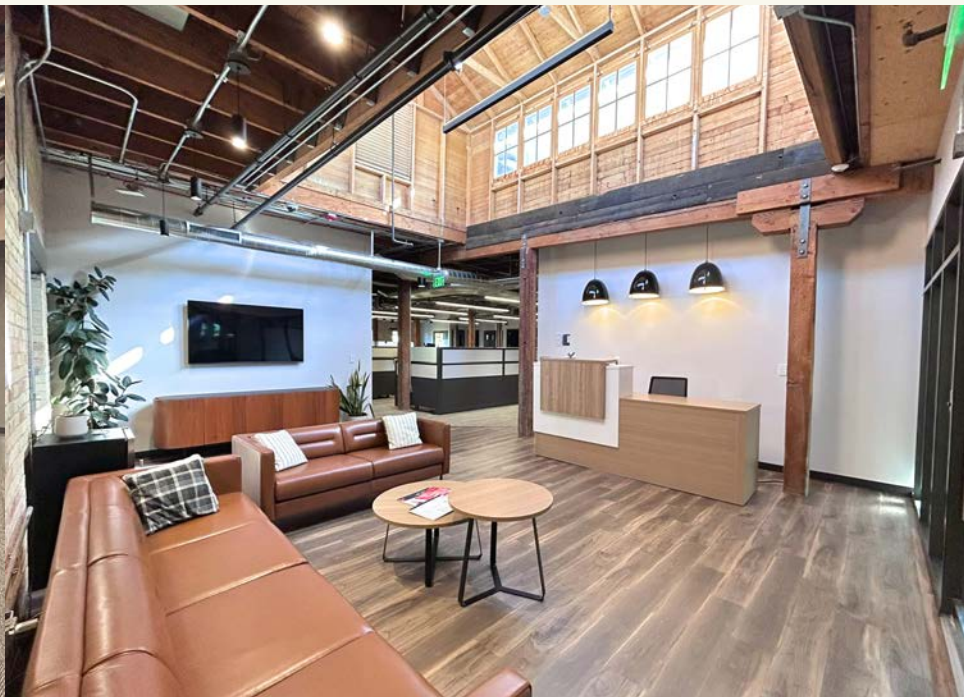
FIFTH FLOOR

18,173 TOTAL SF AVAILABLE



SUITE 580
5,837 SF AVAILABLE
JULY 31, 2030 LEASE END DATE

SUITE 555
12,336 SF AVAILABLE
DECEMBER 31, 2032 LEASE END DATE

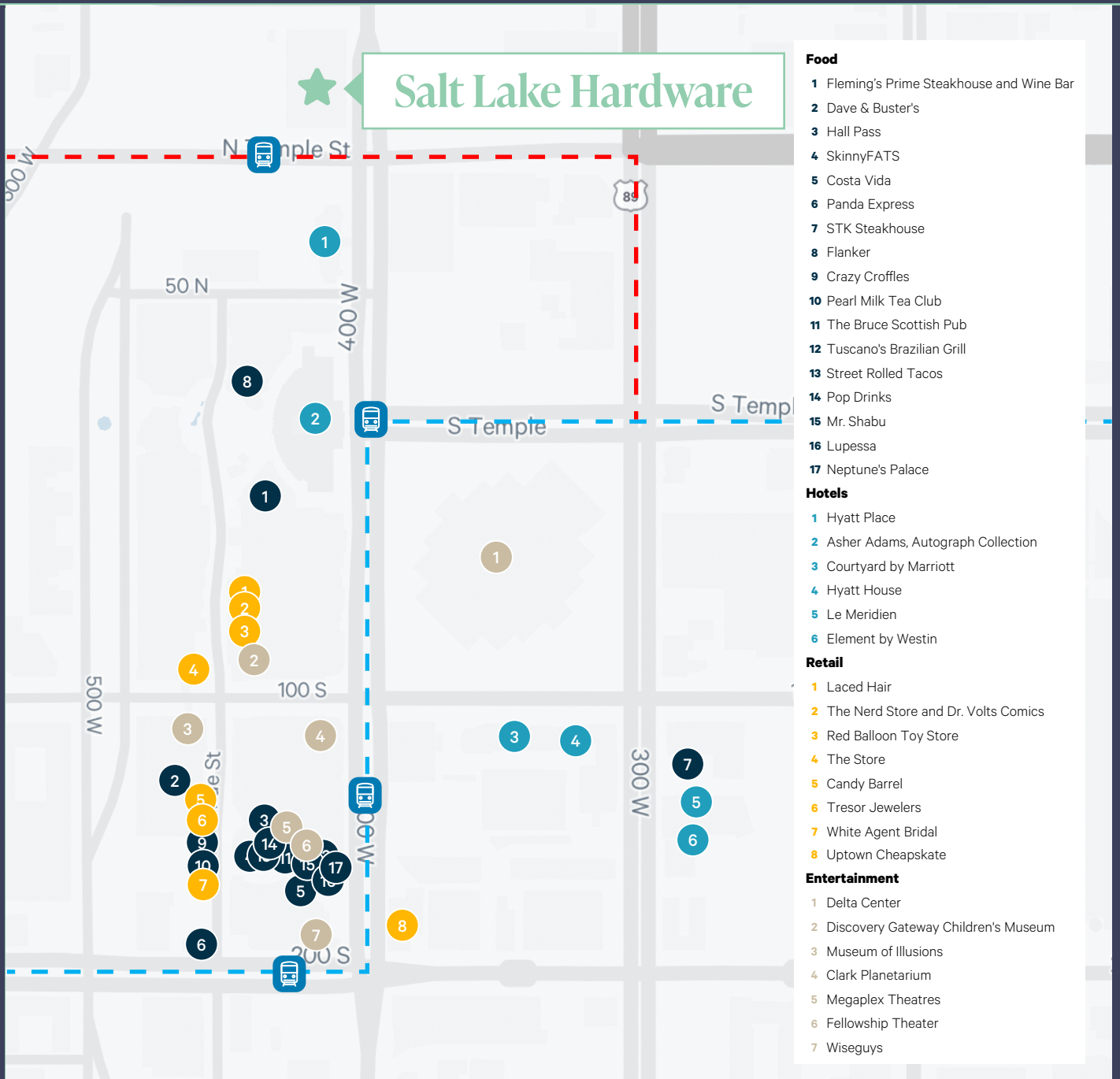




Salt Lake Hardware

FOR SUBLEASE

155 North 400 West, Suite 170 and 500
Salt Lake City, UT



NADIA LETEY
Senior Vice President
+1 801 869 8055
nadia.letey@cbre.com

ROMAN BERNARDO
Senior Associate
+1 801 930 6118
roman.bernardo@cbre.com

CBRE

© 2026 CBRE, Inc. All rights reserved. This information has been obtained from sources believed reliable but has not been verified for accuracy or completeness. CBRE, Inc. makes no guarantee, representation or warranty and accepts no responsibility or liability as to the accuracy, completeness, or reliability of the information contained herein. You should conduct a careful, independent investigation of the property and verify all information. Any reliance on this information is solely at your own risk. CBRE and the CBRE logo are service marks of CBRE, Inc. All other marks displayed on this document are the property of their respective owners, and the use of such marks does not imply any affiliation with or endorsement of CBRE. Photos herein are the property of their respective owners. Use of these images without the express written consent of the owner is prohibited.