

For Sublease

Available Now

18,491 SF plug and play space

RAINIER TOWER

1301 5th Ave Seattle, WA 98101



CBRE

Sublease Highlights

Floor 18: 18,491 RSF

Term: Sublease term through June 30th, 2028

Asking Rate: \$28.00 FSG

Plug and Play: FF&E available

Views: Downtown and Elliot Bay vistas

Parking: 10 stalls available

Building Amenities: New tenant fitness center, showers & lockers, and bike storage, with Fonte Bar, PCC Corner Market, Mendocino Farms, Fogo de Chao, and Equinox Fitness on-site

Location: 50-Yard-Line Seattle CBD location, walking distance to mass transit and restaurants



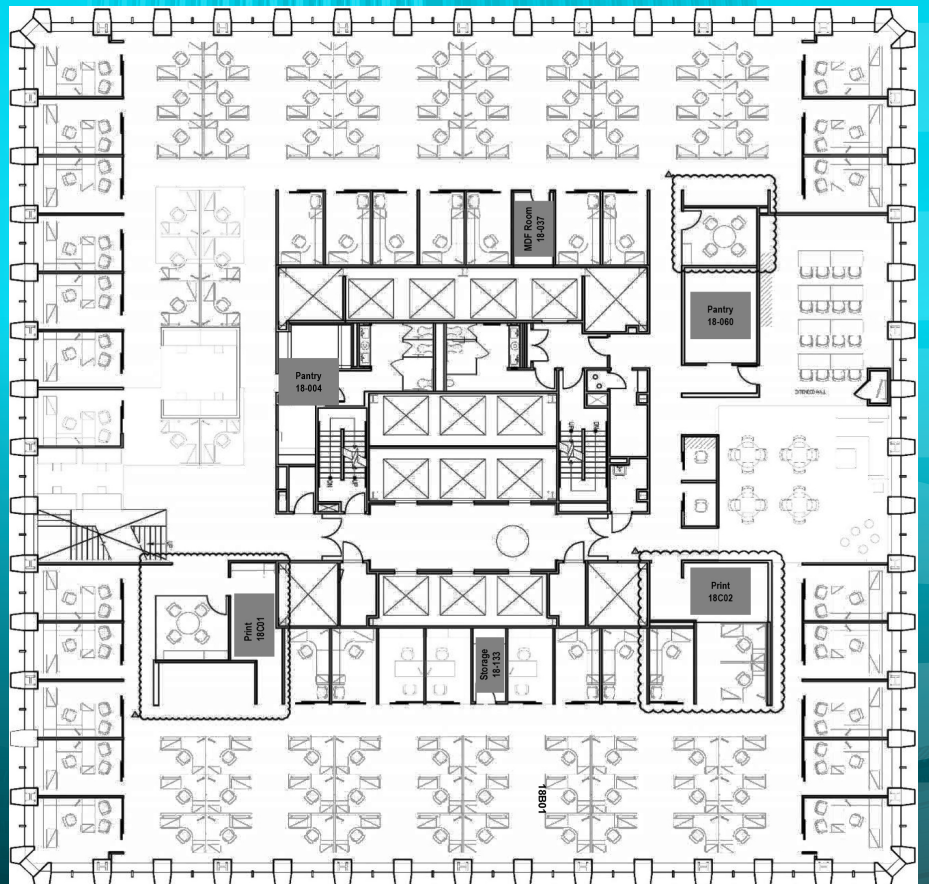
Virtual Tour





Space Highlights

- 70 Large Workstations
- 35 Private Offices
- Collaboration Area
- Kitchen
- Large Training Room



For Sublease

18,491 SF SF plug and play space

RAINIER TOWER

1301 5th Ave Seattle, WA 98101

DAN MARCONI

Vice President

+1 206 769 9607

dan.marconi@cbre.com

JOE RILEY

Senior Vice President

+1 206 743 2432

joe.riley1@cbre.com

MICHAEL DASH

Vice Chairman

+1 206 292 6170

michael.dash@cbre.com

KATE DASH

Associate

+1 206 618 1528

kate.dash@cbre.com



© 2026 CBRE, Inc. All rights reserved. This information has been obtained from sources believed reliable but has not been verified for accuracy or completeness. CBRE, Inc. makes no guarantee, representation or warranty and accepts no responsibility or liability as to the accuracy, completeness, or reliability of the information contained herein. You should conduct a careful, independent investigation of the property and verify all information. Any reliance on this information is solely at your own risk. CBRE and the CBRE logo are service marks of CBRE, Inc. All other marks displayed on this document are the property of their respective owners, and the use of such marks does not imply any affiliation with or endorsement of CBRE. BSO_5.5.26

CBRE