

Cornell Business and Tech Park

33 Thornwood Drive, Ithaca, NY



17,491 SQ FT Available

Current Layout:

Suite 100 - 1,865 SF

Suite 104 - 3,239 SF (Mix of Office & Lab)

Suite 200 - 498 SF

Suite 202 - 2,959 SF

Suite 300 - 2,222 SF

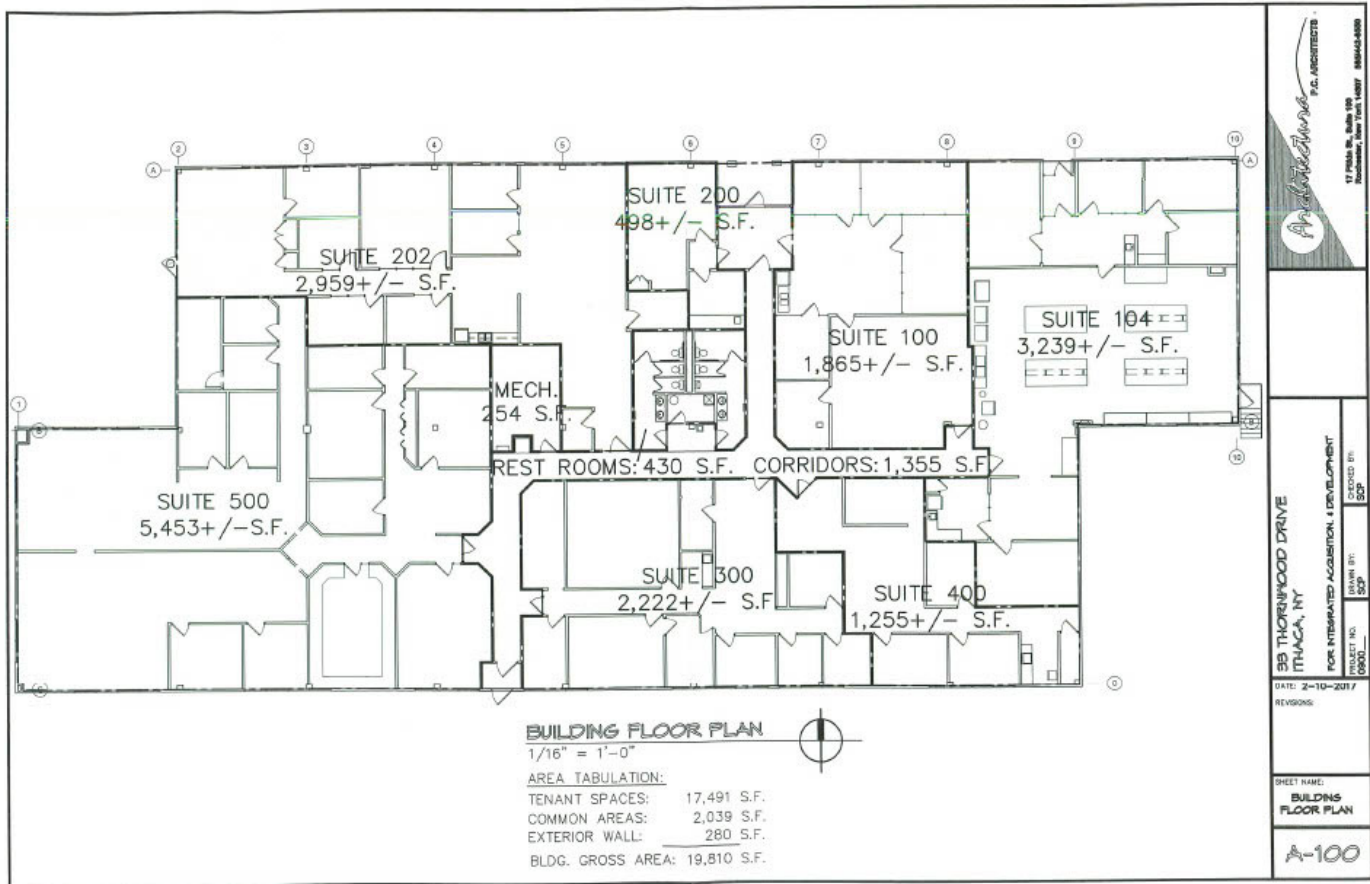
Suite 400 - 1,255 SF

Suite 500 - 5,453 SF



Cornell Business and Tech Park

33 Thornwood Drive, Ithaca, NY



Contact Us

Mark Rupprecht

Lic. Associate Real Estate Broker
+1 315 422 4200 x 323
mark.rupprecht@cbre-syr.com

Bill Anninos

Lic. Associate Real Estate Broker
+1 315 422 4200 x 315
bill.anninos@cbre-syr.com

Amie Culver

Lic. Real Estate Salesperson
+1 315 422 4200 x 327
amie.culver@cbre-syr.com

CBRE Upstate NY

500 Plum Street, Suite 402
Syracuse, New York 13204
+1 315 422 4200

© 2025 CBRE Upstate NY, part of the CBRE Affiliate Network. All rights reserved. This information has been obtained from sources believed reliable, but has not been verified for accuracy or completeness. You should conduct a careful, independent investigation of the property and verify all information. Any reliance on this information is solely at your own risk. CBRE Upstate NY and the CBRE Upstate NY logo are service marks of CBRE Upstate NY. All other marks displayed on this document are the property of their respective owners, and the use of such logos does not imply any affiliation with or endorsement of CBRE Upstate NY. Photos herein are the property of their respective owners. Use of these images without the express written consent of the owner is prohibited.