



18,572 SF
FOR SUBLEASE

AVAILABLE IN 30 DAYS

5000

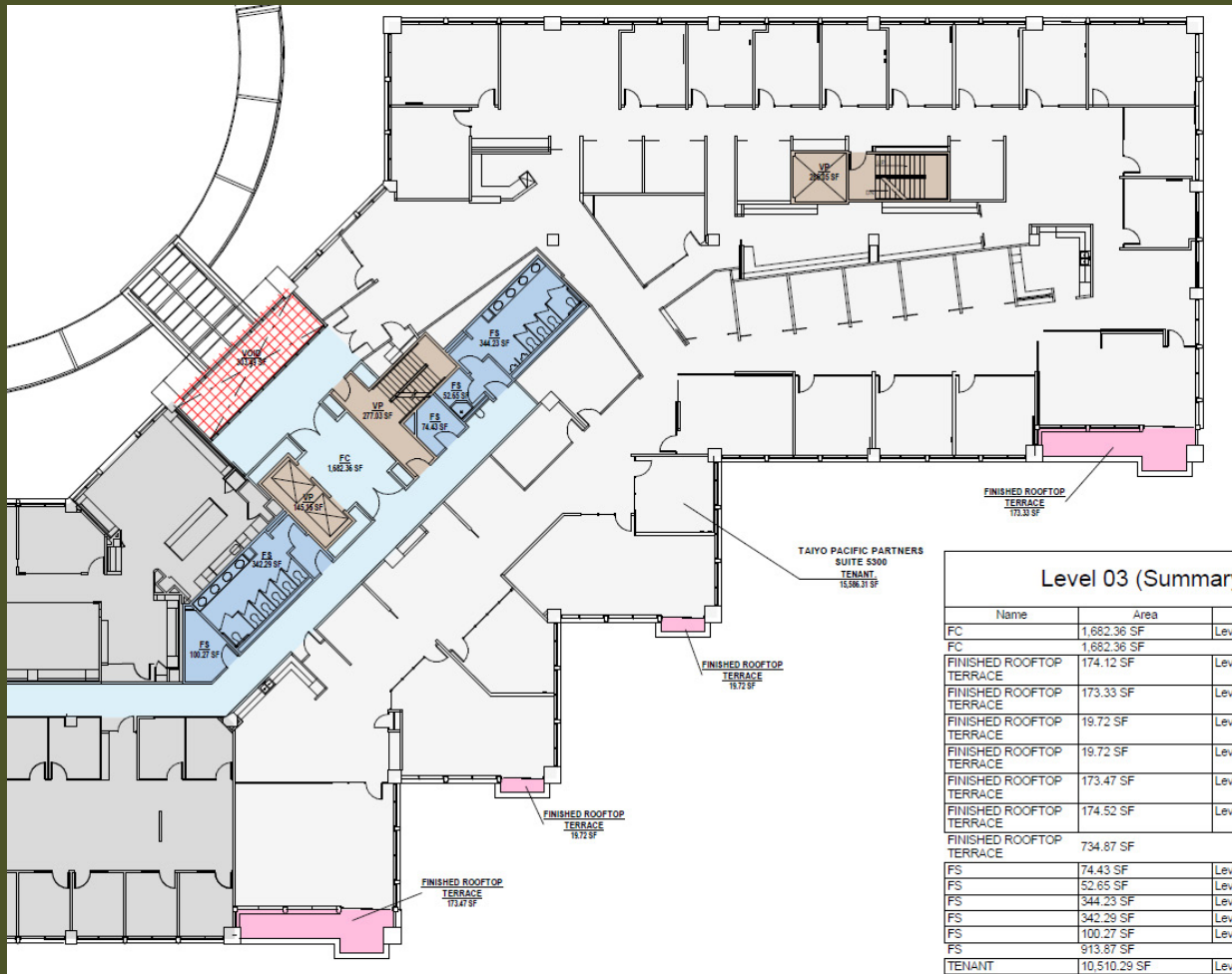
CARILLON
POINT

Kirkland, WA

CBRE



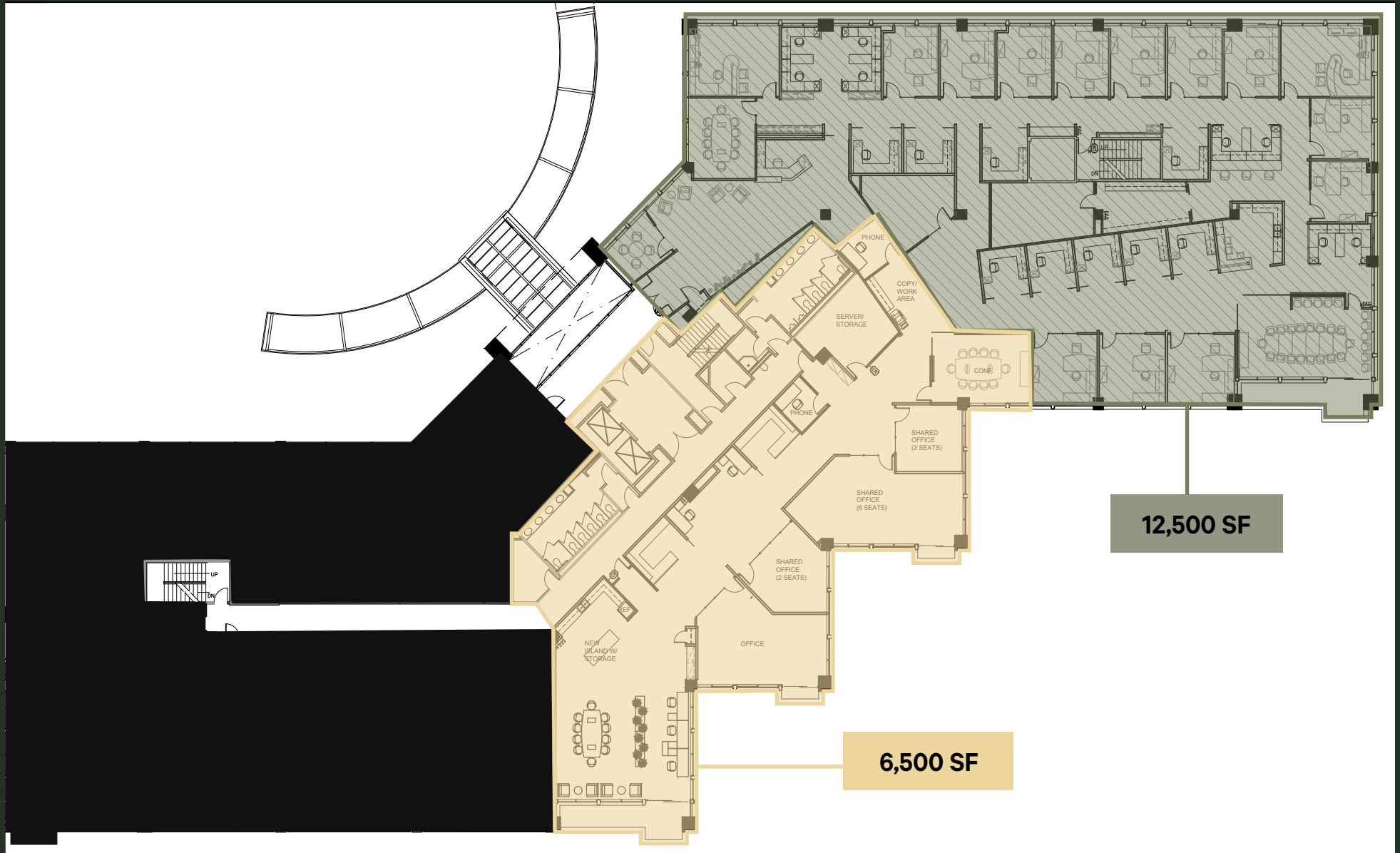
FLOOR PLAN



Property Details:

- Suite 5300
- Call for Rates
- Master Lease expires 6/30/30
- Flexible sublease term available
- Ability to demise to 12,204 RSF
- Unmatched views of Lake Washington and Carillon Marina
- Onsite amenities include a first class fitness center, marina, restaurants + retail, and The Woodmark Hotel and Still Spa
- Parking Ratio : 2.62/1,000 SF
- 5 minutes to SR-520

DEMISING PLAN



18,572 SF
FOR LEASE

5000

CARILLON POINT

Kirkland, WA



TOM ROGERS
First Vice President

+1 425 495 6114

tom.rogers@cbre.com

LESTER SAUVAGE
Sales Associate

+1 206 678 3954

lester.sauvage@cbre.com

CBRE BELLEVUE
929 108th Ave NE,
Bellevue, WA 98004

+1 425 455 8500

CBRE

© 2026 CBRE, Inc. All rights reserved. This information has been obtained from sources believed reliable but has not been verified for accuracy or completeness. CBRE, Inc. makes no guarantee, representation or warranty and accepts no responsibility or liability as to the accuracy, completeness, or reliability of the information contained herein. You should conduct a careful, independent investigation of the property and verify all information. Any reliance on this information is solely at your own risk. CBRE and the CBRE logo are service marks of CBRE, Inc. All other marks displayed on this document are the property of their respective owners, and the use of such marks does not imply any affiliation with or endorsement of CBRE. Photos herein are the property of their respective owners. Use of these images without the express written consent of the owner is prohibited. BSO 04.22.26