

OAKLAND AIRPORT COMMERCE CENTER



CBRE

7303 EDGEWATER DRIVE, SUITE E
OAKLAND, CA

Big Enough To Serve You. Small Enough To Know You...



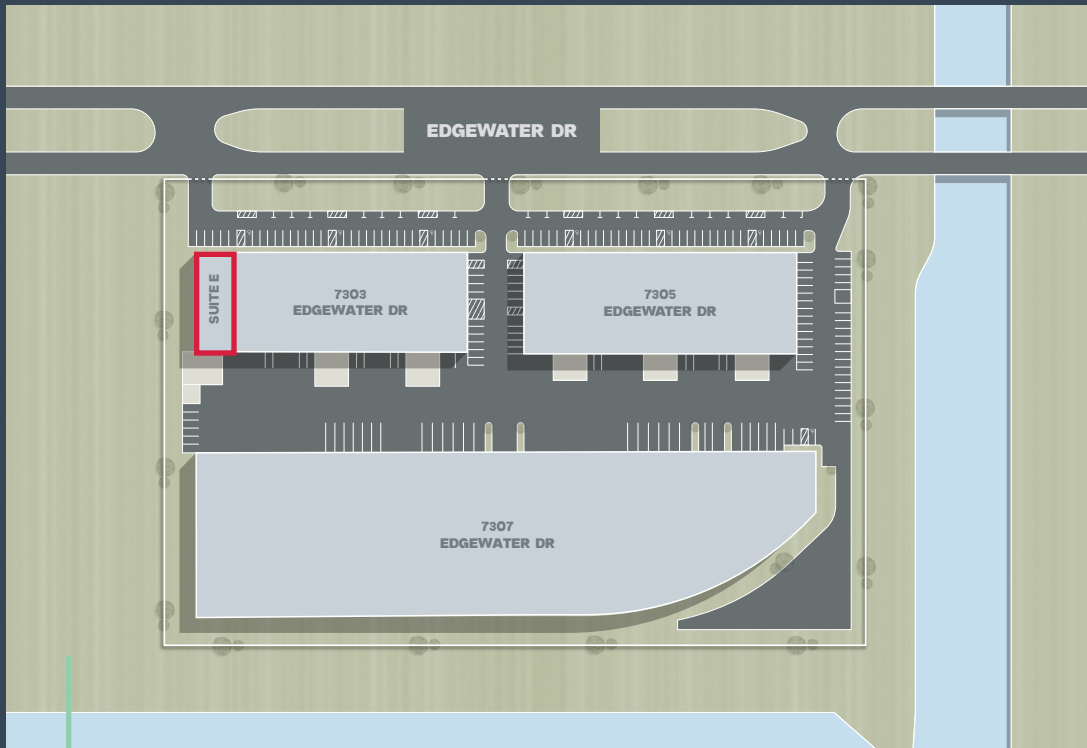
CHRIS VAN KEULEN
Executive Vice President
+1 510 874 1934
chris.vankeulen@cbre.com
Lic. 01845520

PAUL BOSKOVICH
Vice President
+1 408 472 8168
paul.boskovich@cbre.com
Lic. 02079999

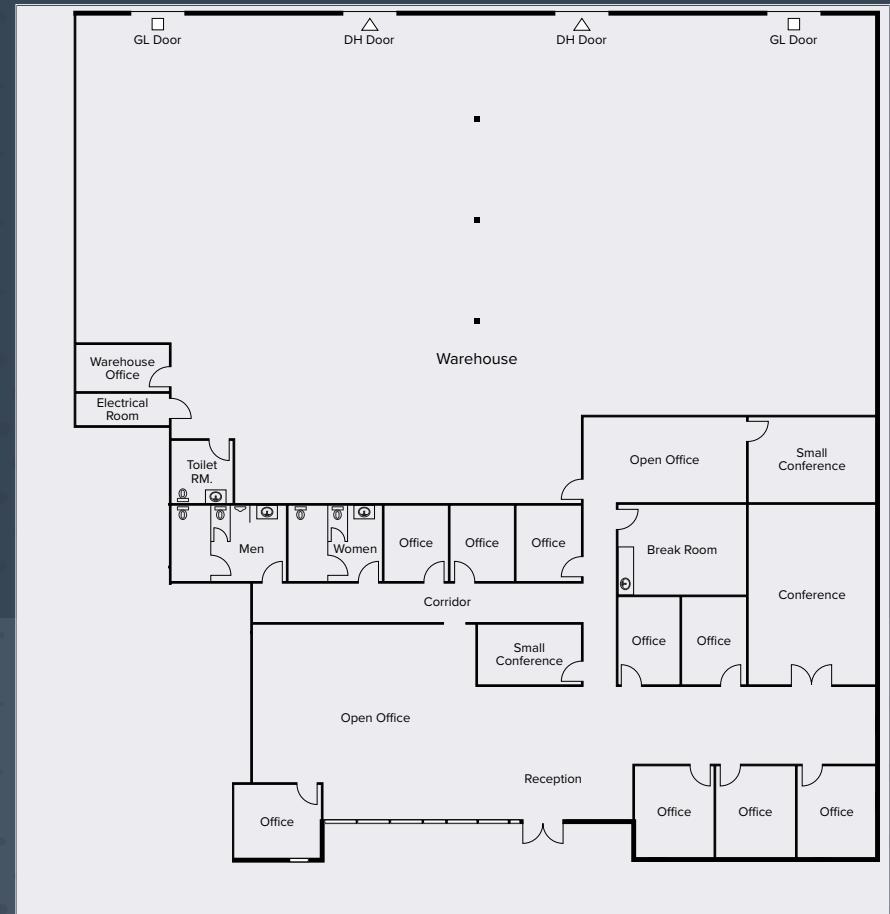
BROOKS BAKER
Senior Associate
+1 510 874 1927
brooks.baker@cbre.com
Lic. 02000900

**±11,317 SF
SPACE FOR LEASE**

7303 EDGEWATER DRIVE
SUITE E
OAKLAND, CA



FLOOR PLAN



PROPERTY FEATURES

- ±11,317 Square Feet Available
- ±3,668 Square Feet of High End Corporate Office
- 2 Dock High Doors, 2 Grade Level Doors
- Clear Height: ±18'-20'
- 200 amps, 3 phase
- Fully Sprinklered
- Insulated Warehouse
- Security System Upgrade in-place
- 6 Miles from Port of Oakland, 2 Miles from Oakland Airport
- Rate: \$1.30/SF NNN

7303 EDGEWATER DRIVE
SUITE E
OAKLAND, CA

±11,317 SF
SPACE FOR LEASE



CHRIS VAN KEULEN
Executive Vice President
+1 510 874 1934
chris.vankeulen@cbre.com
Lic. 01845520

PAUL BOSKOVICH
Vice President
+1 408 472 8168
paul.boskovich@cbre.com
Lic. 02079999

BROOKS BAKER
Senior Associate
+1 510 874 1927
brooks.baker@cbre.com
Lic. 02000900



© 2026 CBRE, Inc. All rights reserved. This information has been obtained from sources believed reliable but has not been verified for accuracy or completeness. CBRE, Inc. makes no guarantee, representation or warranty and accepts no responsibility or liability as to the accuracy, completeness, or reliability of the information contained herein. You should conduct a careful, independent investigation of the property and verify all information. Any reliance on this information is solely at your own risk. CBRE and the CBRE logo are service marks of CBRE, Inc. All other marks displayed on this document are the property of their respective owners, and the use of such marks does not imply any affiliation with or endorsement of CBRE. Photos herein are the property of their respective owners. Use of these images without the express written consent of the owner is prohibited.