

# OAKLAND AIRPORT COMMERCE CENTER



**CBRE**

7307 EDGEWATER DRIVE, SUITE L  
OAKLAND, CA

*Big Enough To Serve You. Small Enough To Know You...*



**CHRIS VAN KEULEN**  
Executive Vice President  
+1 510 874 1934  
chris.vankeulen@cbre.com  
Lic. 01845520

**PAUL BOSKOVICH**  
Vice President  
+1 408 472 8168  
paul.boskovich@cbre.com  
Lic. 02079999

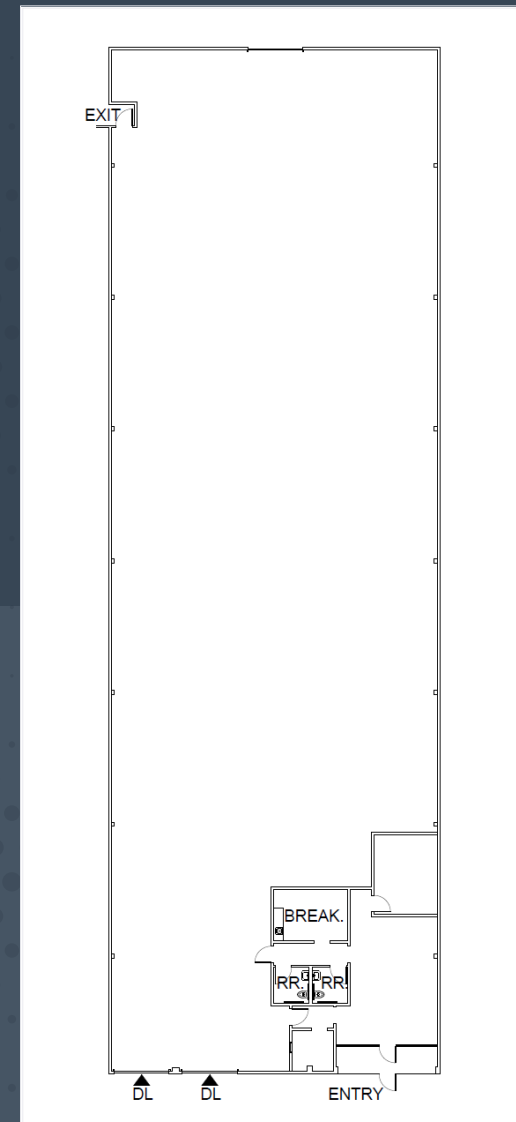
**BROOKS BAKER**  
Senior Associate  
+1 510 874 1927  
brooks.baker@cbre.com  
Lic. 02000900

**±11,220 SF  
SPACE FOR LEASE**

7307 EDGEWATER DRIVE  
SUITE L  
OAKLAND, CA



## FLOOR PLAN



## PROPERTY FEATURES

- ±11,220 Square Feet Available
- ±200 Square Feet Office
- 2 Dock High Doors
- Clear Height: ±24'
- 200 amps, 3 phase
- Fully Sprinklered
- Insulated Warehouse
- Security System Upgrade in-place
- 6 Miles from Port of Oakland, 2 Miles from Oakland Airport
- Rate: \$1.15/SF NNN

7307 EDGEWATER DRIVE  
SUITE L  
OAKLAND, CA

±11,220 SF  
SPACE FOR LEASE



**CHRIS VAN KEULEN**  
Executive Vice President  
+1 510 874 1934  
chris.vankeulen@cbre.com  
Lic. 01845520

**PAUL BOSKOVICH**  
Vice President  
+1 408 472 8168  
paul.boskovich@cbre.com  
Lic. 02079999

**BROOKS BAKER**  
Senior Associate  
+1 510 874 1927  
brooks.baker@cbre.com  
Lic. 02000900



**CBRE**

© 2026 CBRE, Inc. All rights reserved. This information has been obtained from sources believed reliable but has not been verified for accuracy or completeness. CBRE, Inc. makes no guarantee, representation or warranty and accepts no responsibility or liability as to the accuracy, completeness, or reliability of the information contained herein. You should conduct a careful, independent investigation of the property and verify all information. Any reliance on this information is solely at your own risk. CBRE and the CBRE logo are service marks of CBRE, Inc. All other marks displayed on this document are the property of their respective owners, and the use of such marks does not imply any affiliation with or endorsement of CBRE. Photos herein are the property of their respective owners. Use of these images without the express written consent of the owner is prohibited.