

OFFICE SPACE FOR LEASE

# 1223

PLEASANT GROVE BLVD



ROSEVILLE | CA | 95678

**CBRE**

## Suite 120 | ±1,416 RSF | \$2.00 PSF/Month | FSG

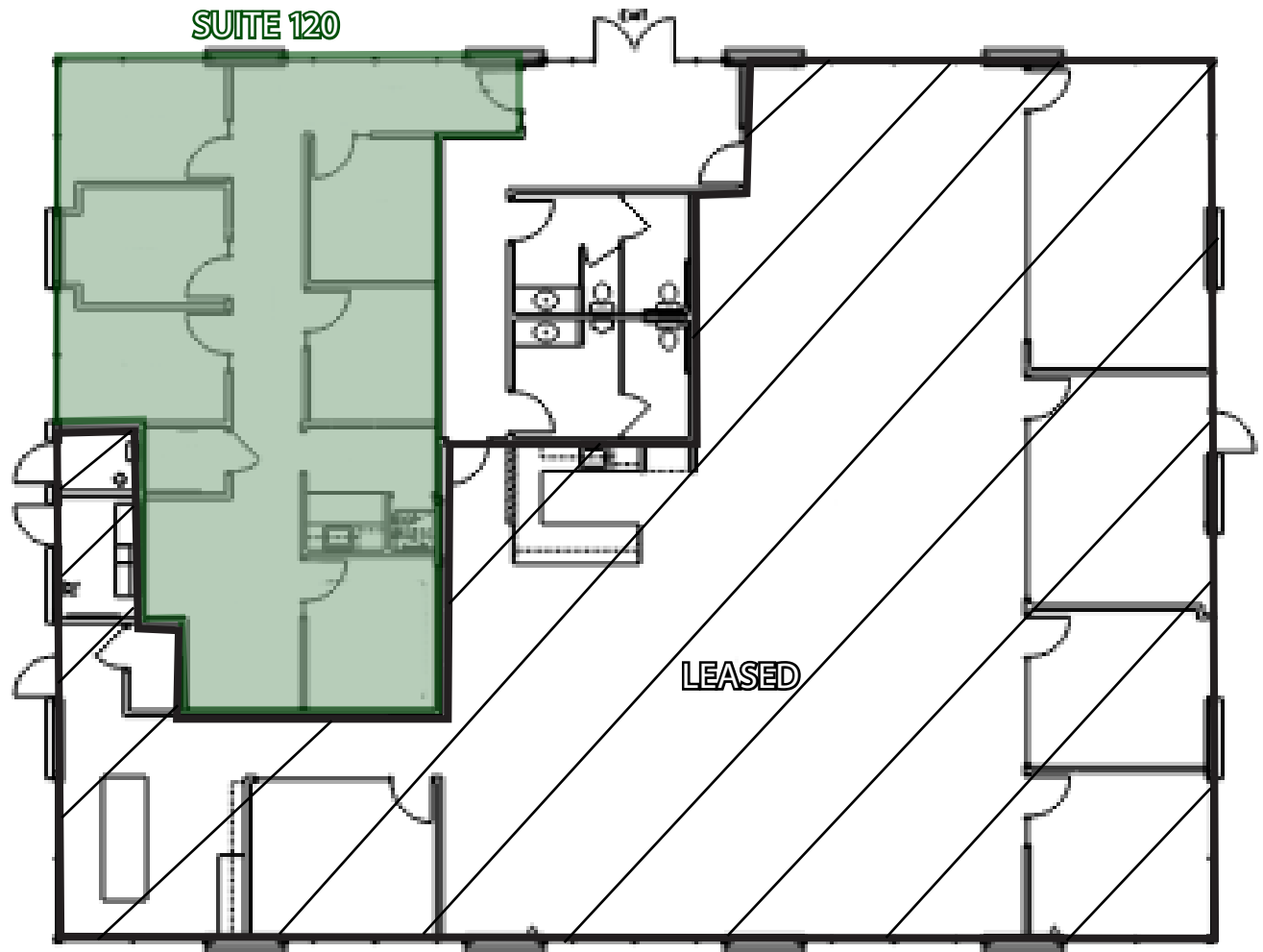
**Flexible Leasing Options** – Short-term lease opportunities may be available, offering convenience and adaptability to suit your business needs.

**Bright and Inviting Atmosphere** – Enjoy an abundance of natural light streaming through numerous windows, creating a vibrant and energizing workspace.

**Prime West Roseville Location** – A rare find in a highly sought-after area, perfect for businesses looking to establish themselves in a thriving professional community.

**Spacious and Functional Layout** – Features six private offices, ideal for teams, client meetings, or focused individual workspaces.

**Well-Equipped Breakroom** – Includes a dedicated break area with a built-in sink, providing a comfortable space for meals, coffee breaks, and casual conversations.





PROPERTY PHOTOS





FOOTHILLS BLVD

SITE

PLEASANT GROVE BLVD



# 1223

PLEASANT GROVE BLVD

© 2025 CBRE, Inc. All rights reserved. This information has been obtained from sources believed reliable but has not been verified for accuracy or completeness. CBRE, Inc. makes no guarantee, representation or warranty and accepts no responsibility or liability as to the accuracy, completeness, or reliability of the information contained herein. You should conduct a careful, independent investigation of the property and verify all information. Any reliance on this information is solely at your own risk. CBRE and the CBRE logo are service marks of CBRE, Inc. All other marks displayed on this document are the property of their respective owners, and the use of such marks does not imply any affiliation with or endorsement of CBRE. Photos herein are the property of their respective owners. Use of these images without the express written consent of the owner is prohibited.

KEVIN LARSCHIED  
Executive Vice President  
+1 916 781 4818  
kevin.larscheid@cbre.com  
Lic. 00816790

SCOTT RUSH  
First Vice President  
+1 916 781 4802  
scott.rush@cbre.com  
Lic. 01228497

PHILLIP LARSCHIED  
Sales Associate  
+1 916 781 4848  
phillip.larscheid@cbre.com  
Lic. 02434984

**CBRE**