

FOR LEASE | ALONG ALHAMBRA MEDICAL CORRIDOR

# ALHAMBRA MEDICAL PLAZA

1315 Alhambra Boulevard  
Sacramento, CA 95816

ALHAMBRA MEDICAL PLAZA

1315

**TONY WHITTAKER**  
+1 916 492 6914  
TONY.WHITTAKER@CBRE.COM  
LIC. 01780828

**JASON GOFF**  
+1 916 446 8222  
JASON.GOFF@CBRE.COM  
LIC. 01205230

**NELLIE CRUZ**  
+1 916 492 6915  
NELLIE.CRUZ@CBRE.COM  
LIC. 02086140

**CBRE**

**IRA**  
CAPITAL

CBRE  
3rd Generation  
Medical Spaces  
Tony Whittaker  
Lic. 01780828  
Jason Goff  
Lic. 01205230  
Nellie Cruz  
Lic. 02086140  
+1 916 492 6914

N 57  
3100

# PROPERTY HIGHLIGHTS



**PROMINENT LOCATION** along Sacramento's Alhambra medical corridor



**WALKING DISTANCE** to eateries, coffee shops, fitness, and other professional amenities



**2ND GENERATION** medical/dental office with accessible parking



**BUILT:** 1989 (Renovated in 1999)



**STORIES:** 3



**RBA:** 29,000 SF



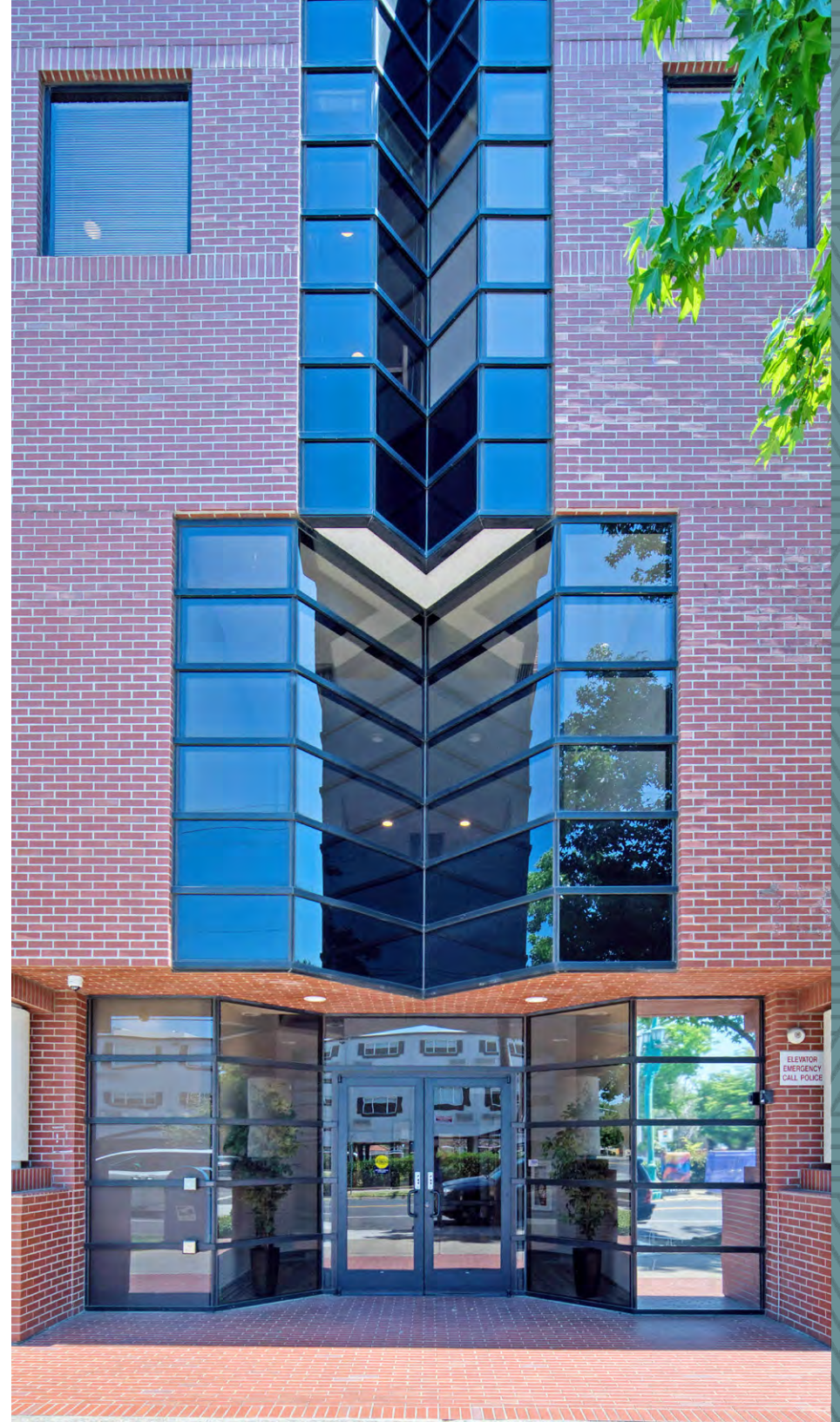
**TYPICAL FLOOR:** 9,667 SF



**ZONING:** C-2-SPD



**PARKING:** On-site secured parking garage



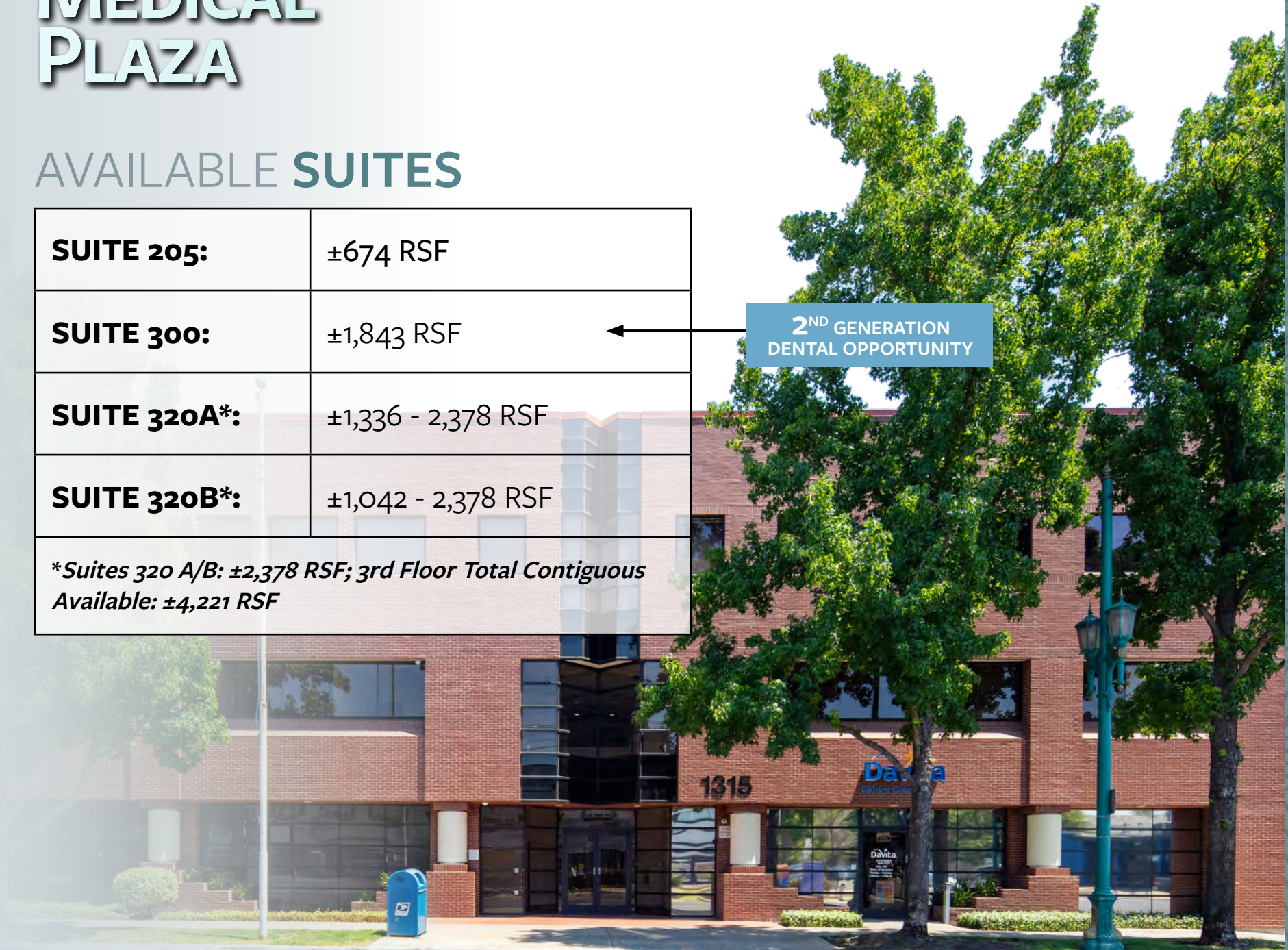
# ALHAMBRA MEDICAL PLAZA

1315 Alhambra Boulevard | Sacramento, CA 95816

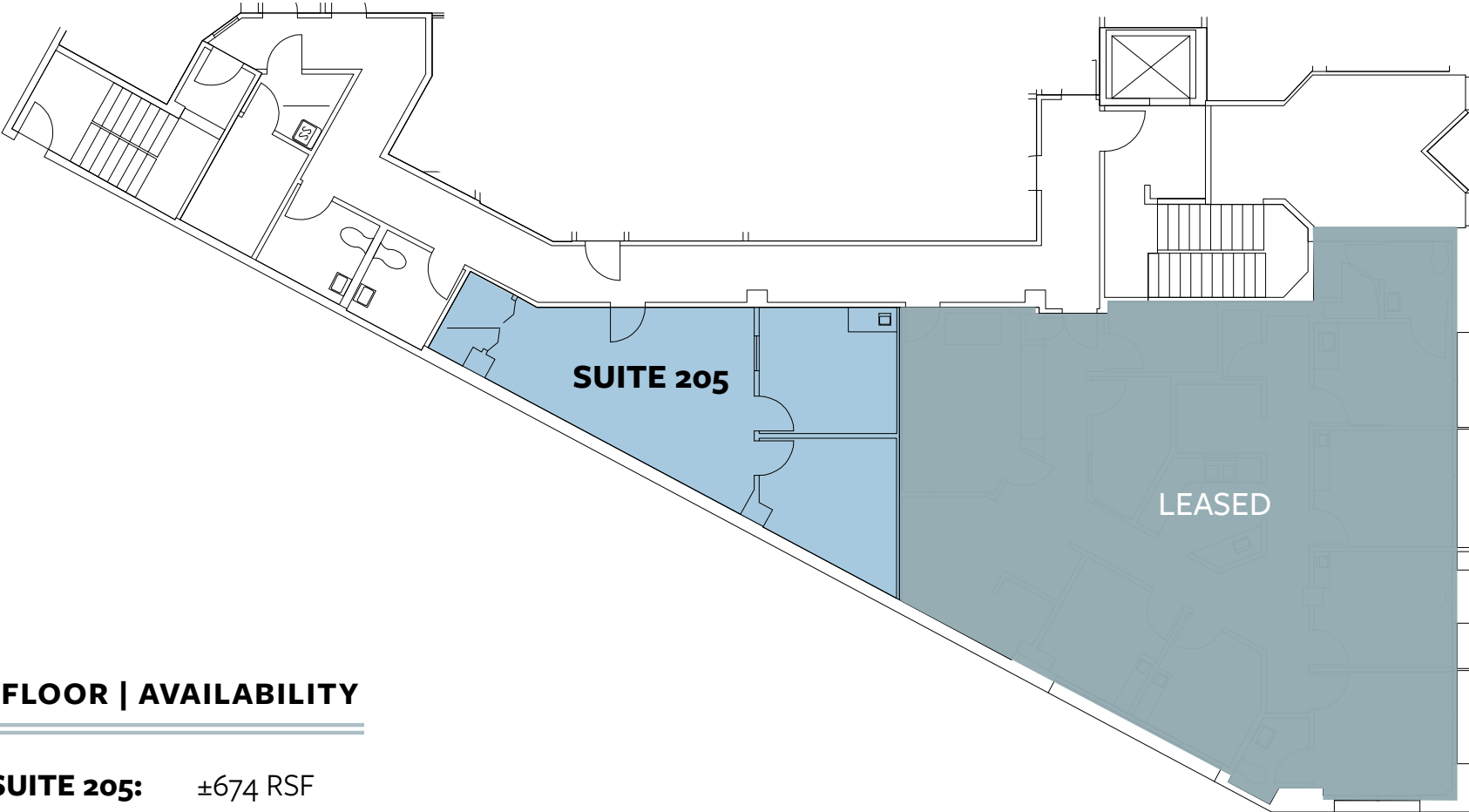
## AVAILABLE SUITES

<b>SUITE 205:</b>	±674 RSF
<b>SUITE 300:</b>	±1,843 RSF
<b>SUITE 320A*:</b>	±1,336 - 2,378 RSF
<b>SUITE 320B*:</b>	±1,042 - 2,378 RSF
<i>*Suites 320 A/B: ±2,378 RSF; 3rd Floor Total Contiguous Available: ±4,221 RSF</i>	

← 2<sup>ND</sup> GENERATION  
DENTAL OPPORTUNITY



# FLOOR PLAN | 2<sup>ND</sup> FLOOR

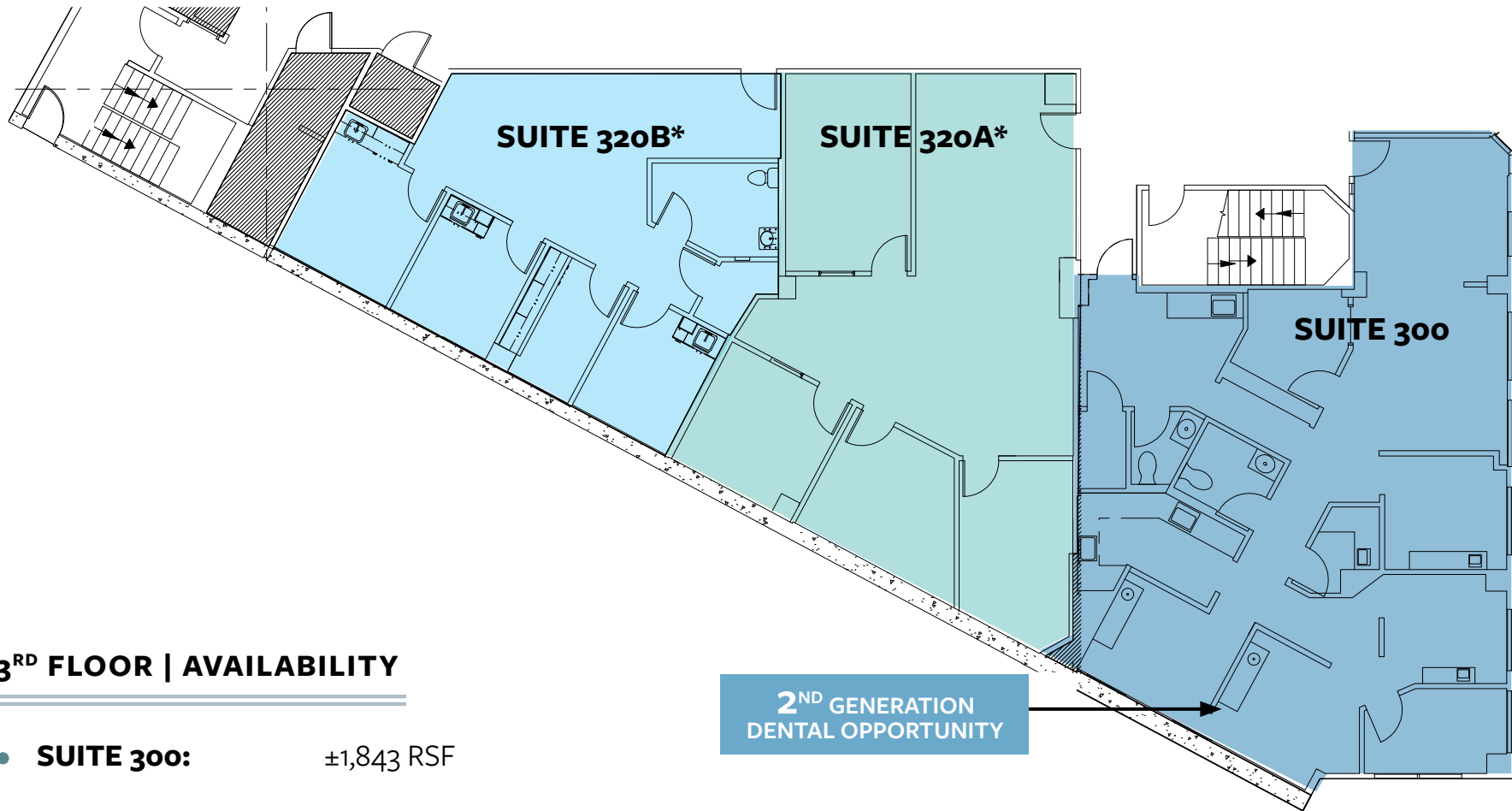


## 2<sup>ND</sup> FLOOR | AVAILABILITY

- **SUITE 205:** ±674 RSF

ALL MEASUREMENTS ARE APPROXIMATE.

# FLOOR PLAN | 3<sup>RD</sup> FLOOR

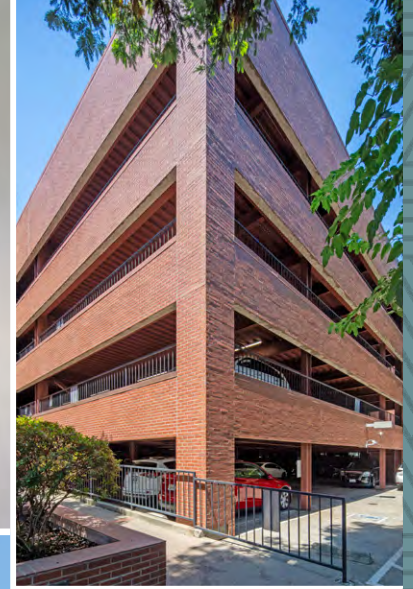


## 3<sup>RD</sup> FLOOR | AVAILABILITY

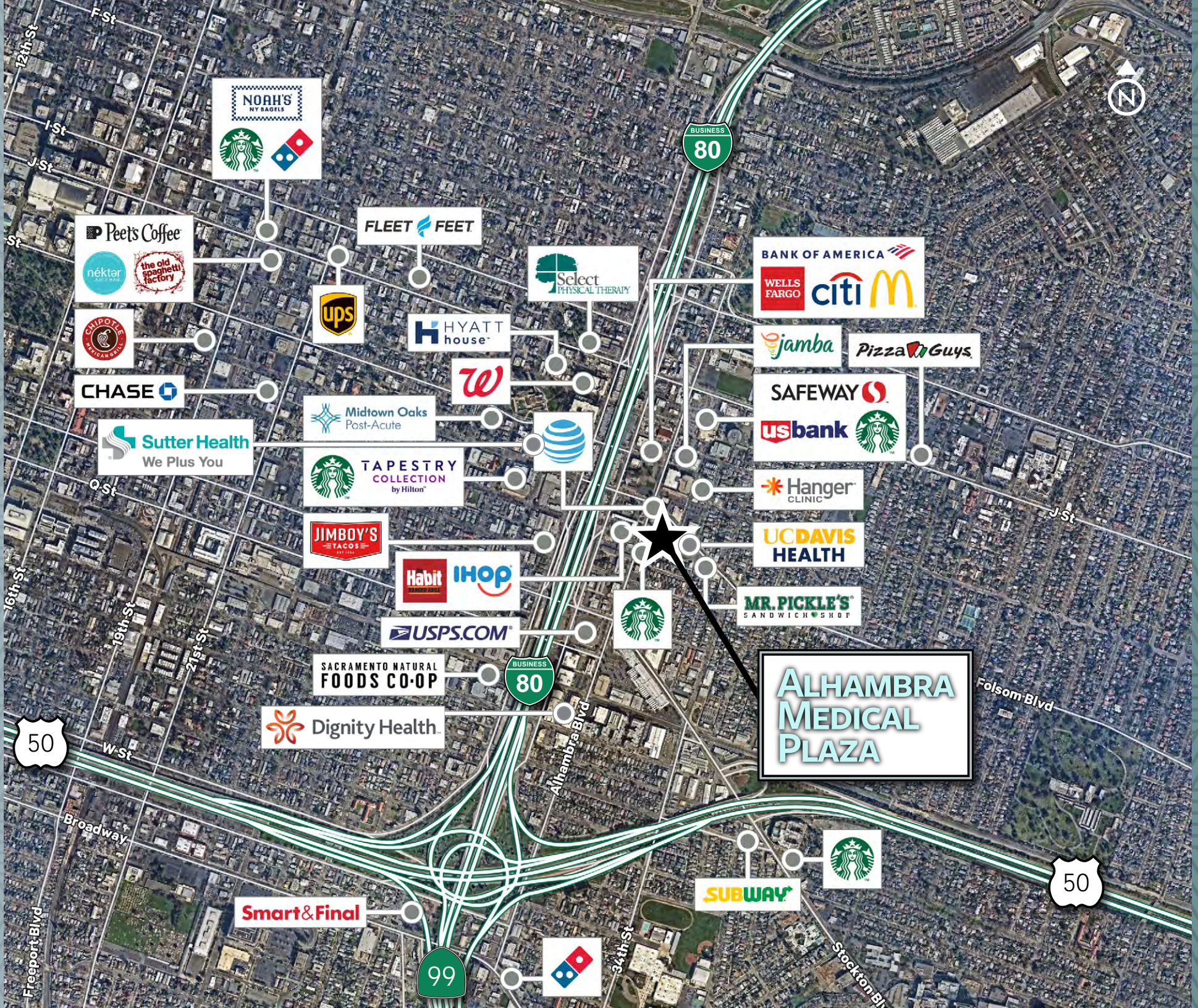
- **SUITE 300:** ±1,843 RSF
- **SUITE 320A\*:** ±1,336 RSF
- **SUITE 320B\*:** ±1,042 RSF

*\*Suites 320 A/B: ±2,378 RSF; 3rd Floor Total Contiguous Available: ±4,221 RSF*

ALL MEASUREMENTS ARE APPROXIMATE.



FOR LEASE | ALHAMBRA MEDICAL PLAZA



**ALHAMBRA  
MEDICAL  
PLAZA**

**NOAH'S  
NY BAGELS**

**Peets Coffee**

**FLEET FEET**

**BUSINESS  
80**

**BANK OF AMERICA  
WELLS FARGO citi MCDONALD'S**

**ups**

**Select  
PHYSICAL THERAPY**

**HYATT  
house**

**jamba Pizza Guys**

**CHIPOTE  
MEXICAN BOWL**

**W**

**CHASE**

**Midtown Oaks  
Post-Acute**

**AT&T**

**SAFeway**

**USbank**

**Sutter Health  
We Plus You**

**STARBUCKS  
TAPESTRY  
COLLECTION  
by Hilton**

**Hanger  
CLINIC**

**JIMBO'S  
TACOS**

**Habit  
BURGER GRILL**

**IHop**

**UC DAVIS  
HEALTH**

**USPS.COM**

**STARBUCKS**

**MR. PICKLE'S  
SANDWICH SHOP**

**SACRAMENTO NATURAL  
FOODS CO-OP**

**BUSINESS  
80**

**Dignity Health**

**50**

**ALHAMBRA  
MEDICAL  
PLAZA**

**Smart & Final**

**99**

**SUBWAY**

**STARBUCKS**

**50**

**DOMINO'S**

FOR LEASE | ALONG ALHAMBRA MEDICAL CORRIDOR

# ALHAMBRA MEDICAL PLAZA

1315 Alhambra Boulevard | Sacramento, CA 95816



## CONTACT US



**TONY WHITTAKER**  
SENIOR VICE PRESIDENT  
+1 916 492 6914  
TONY.WHITTAKER@CBRE.COM  
LIC. 01780828

**JASON GOFF**  
EXECUTIVE VICE PRESIDENT  
+1 916 446 8222  
JASON.GOFF@CBRE.COM  
LIC. 01205230

**NELLIE CRUZ**  
VICE PRESIDENT  
+1 916 492 6915  
NELLIE.CRUZ@CBRE.COM  
LIC. 02086140



© 2026 CBRE, Inc. All rights reserved. This information has been obtained from sources believed reliable, but has not been verified for accuracy or completeness. You should conduct a careful, independent investigation of the property and verify all information. Any reliance on this information is solely at your own risk. CBRE and the CBRE logo are service marks of CBRE, Inc. All other marks displayed on this document are the property of their respective owners, and the use of such logos does not imply any affiliation with or endorsement of CBRE. Photos herein are the property of their respective owners. Use of these images without the express written consent of the owner is prohibited. PMStudio\_March2026