

**530 FIFTH**

**AN ADDRESS FOR BUSINESS**

530 FIFTH

MODERN



WORKPLACE



ELEVATED



AMENITIES

AN ADDRESS FOR



BUSINESS





530 FIFTH

# AT 530 FIFTH

## WE ELEVATE BUSINESS TO A FIFTH AVENUE LIFESTYLE.

Our boutique building merges premium amenities with versatile office solutions, catering to diverse sectors, including tech, creative, hospitality, finance, and law. The building, which extends from 44th to 45th street, has its primary entrance located on Fifth Avenue, creating a true feeling of arrival.

With customizable spaces, state-of-the-art amenities like the Convene Conference Center, co-working spaces, health and fitness programs, and a new specialty coffee shop, we place our tenants at the heart of Manhattan's iconic avenue—ensuring a workspace that's not just about business but about thriving in style.

**300+**

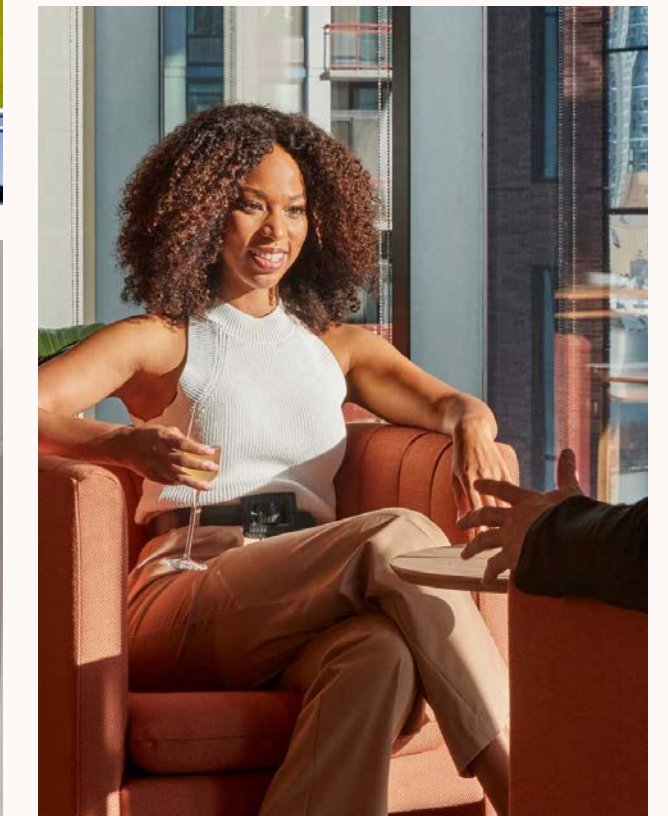
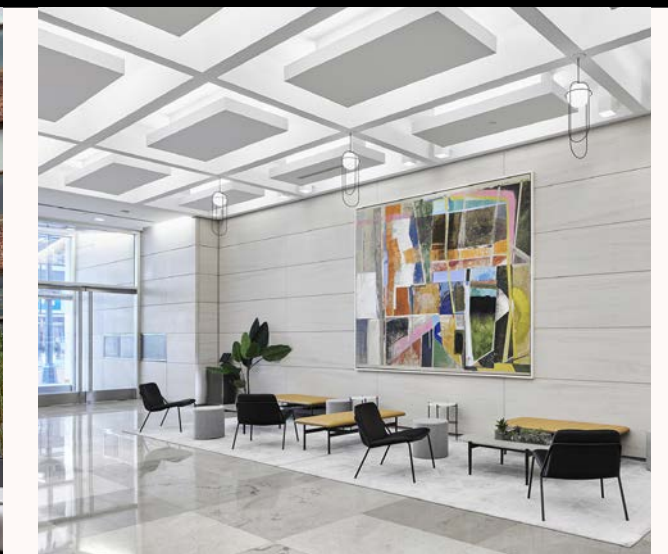
BARS & RESTAURANTS

**250+**

LUXURY FASHION &  
ACCESSORIES

**12**




SUBWAY LINES

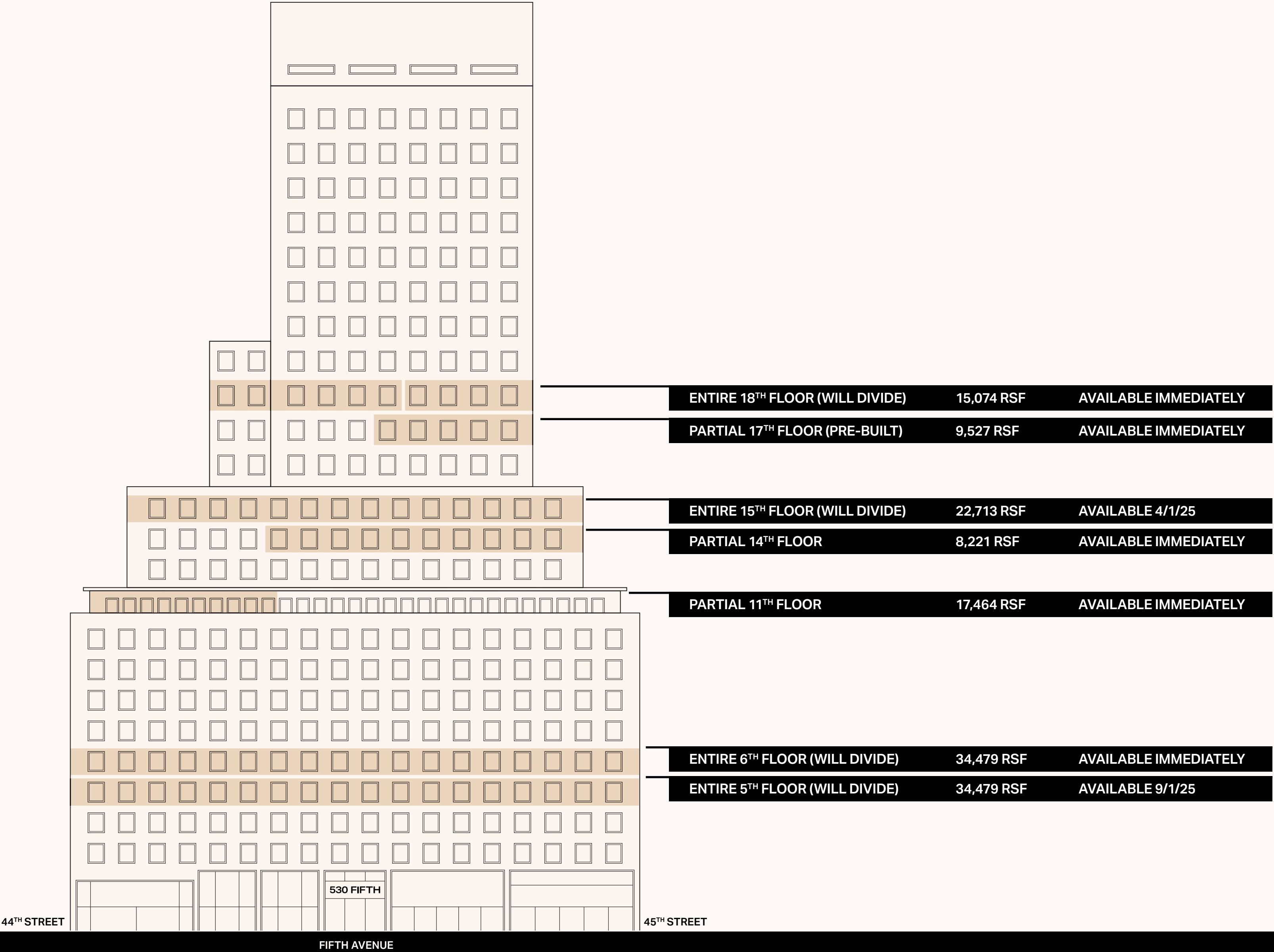




# AVAILABILITIES

Our diverse tenant roster creates a vibrant and collaborative business community. Availabilities of prime office spaces are suited for any size, and any industry.

JOIN OUR PRESTIGIOUS TENANT ROSTER	
<div>AVISON YOUNG</div>	<div> MAJOR, LINDSEY &amp; AFRICA</div>
<div>PEI</div>	<div>convene</div>
<div>vocon.</div>	<div>WAVE HILL PARTNERS</div>
<div>BRE HOTELS &amp; RESORTS</div>	<div> CareAbout HEALTH</div>
<div>THE BEEKMAN GROUP</div>	<div> OPERATIVE</div>





# 530 FIFTH

# MODERN WORKPLACE



LARGE OPEN PLAN PANTRY



COLLABORATIVE WORKSPACE



MEETING ROOMS

## VERSATILE PRE-BUILTS AND TURN-KEY SOLUTIONS

At 530 Fifth, we design our versatile pre-built and turn-key office spaces to cater to diverse industries. These thoughtfully designed spaces provide the flexibility and functionality to support your business's unique needs, ensuring a seamless and productive work environment.



LARGE OPEN SPACES AVAILABLE

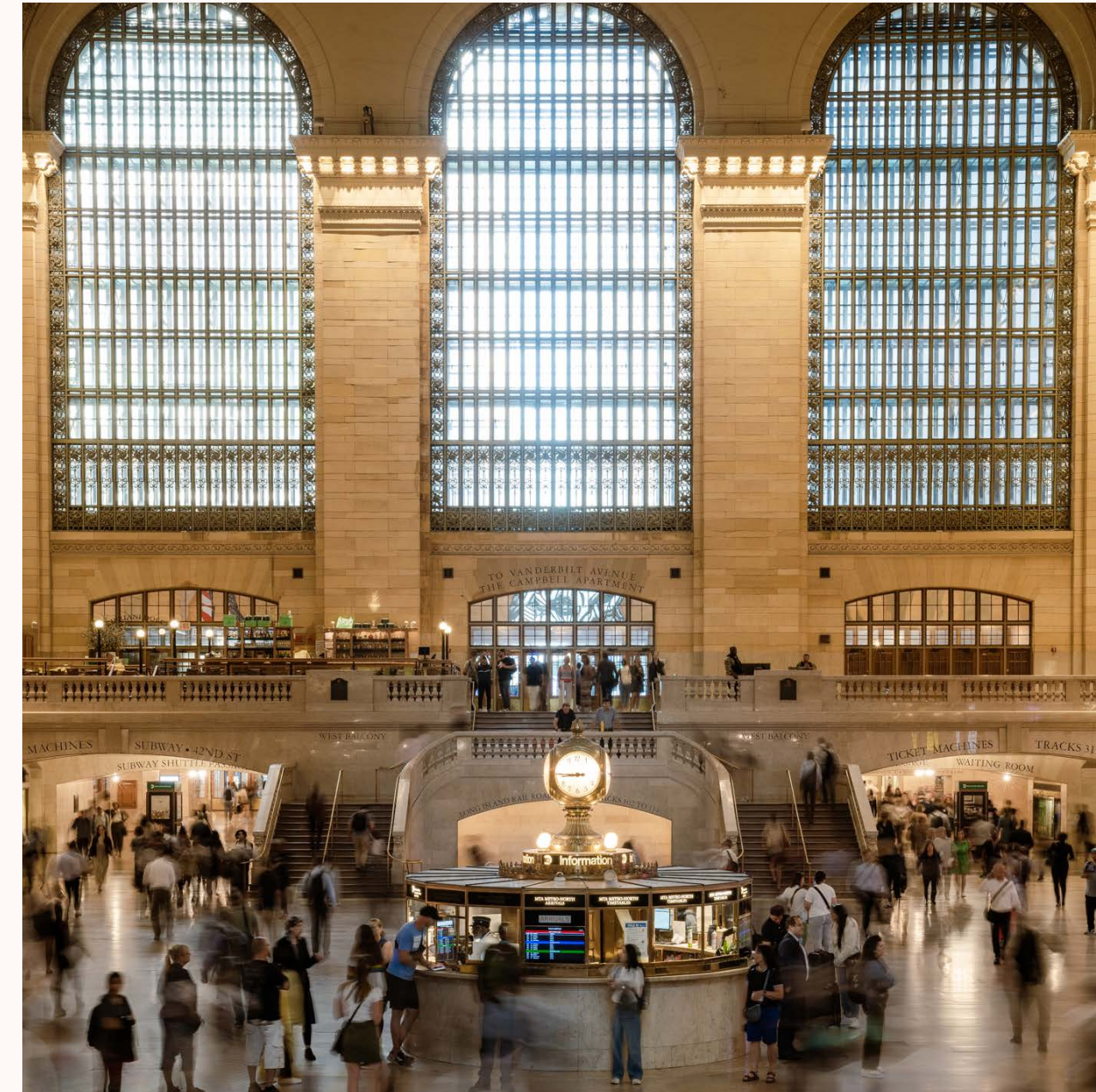


# 530 FIFTH

# FIFTH AVENUE LIFESTYLE



WORLD-CLASS DINING



GRAND CENTRAL TERMINAL

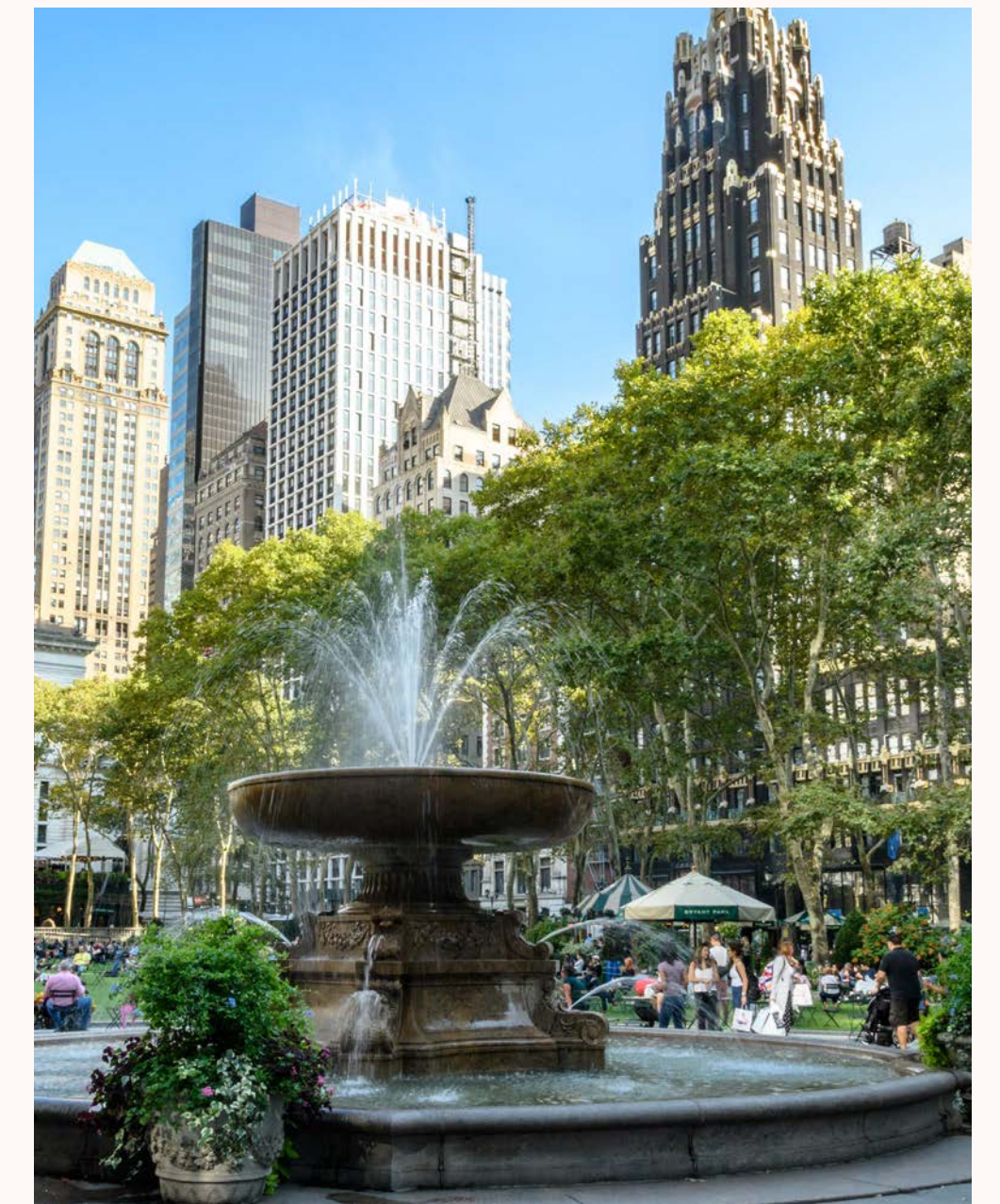
## ONE OF THE WORLD'S MOST ICONIC AVENUES

At 530 Fifth, your business address isn't just a location—it's a statement. Situated in the heart of Manhattan, our building offers remarkable access to the vibrant Fifth Avenue lifestyle, blending business prestige with world-class dining, shopping, and cultural experiences. Join us and elevate your business presence on one of the world's most iconic avenues.

NEIGHBORHOOD MAP →

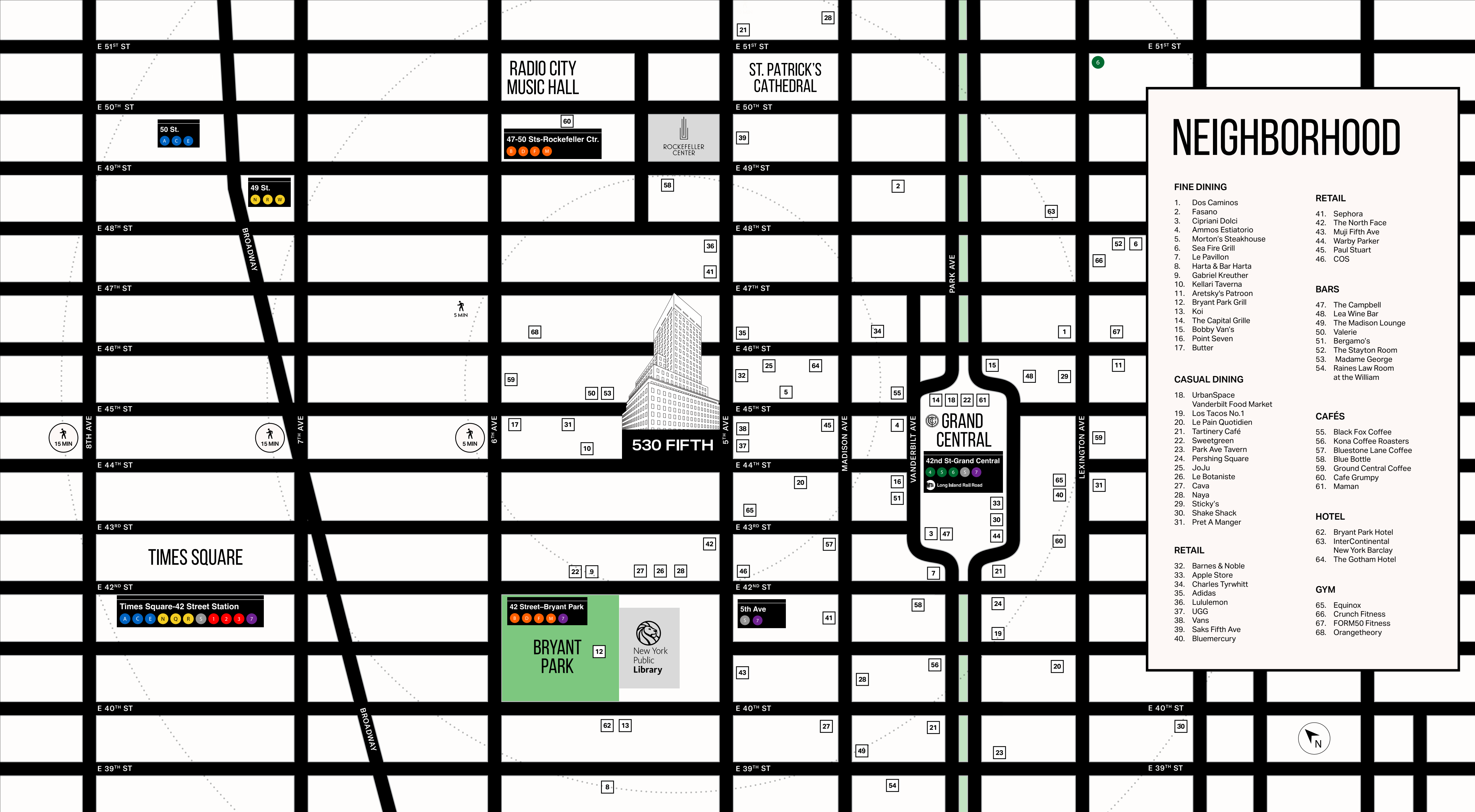


LUXURY SHOPPING



BRYANT PARK





# NEIGHBORHOOD

## FINE DINING

1. Dos Caminos
2. Fasano
3. Cipriani Dolci
4. Ammos Estiatorio
5. Morton's Steakhouse
6. Sea Fire Grill
7. Le Pavillon
8. Harta & Bar Harta
9. Gabriel Kreuther
10. Kellari Taverna
11. Aretsky's Patroon
12. Bryant Park Grill
13. Koi
14. The Capital Grille
15. Bobby Van's
16. Point Seven
17. Butter

## CASUAL DINING

18. UrbanSpace
- Vanderbilt Food Market
19. Los Tacos No.1
20. Le Pain Quotidien
21. Tartinery Café
22. Sweetgreen
23. Park Ave Tavern
24. Pershing Square
25. JoJu
26. Le Botaniste
27. Cava
28. Naya
29. Sticky's
30. Shake Shack
31. Pret A Manger

## RETAIL

32. Barnes & Noble
33. Apple Store
34. Charles Tyrwhitt
35. Adidas
36. Lululemon
37. UGG
38. Vans
39. Saks Fifth Ave
40. Bluemercury

## RETAIL

41. Sephora
42. The North Face
43. Muji Fifth Ave
44. Warby Parker
45. Paul Stuart
46. COS

## BARS

47. The Campbell
48. Lea Wine Bar
49. The Madison Lounge
50. Valerie
51. Bergamo's
52. The Stayton Room
53. Madame George
54. Raines Law Room at the William

## CAFÉS

55. Black Fox Coffee
56. Kona Coffee Roasters
57. Bluestone Lane Coffee
58. Blue Bottle
59. Ground Central Coffee
60. Cafe Grumpy
61. Maman

## HOTEL

62. Bryant Park Hotel
63. InterContinental New York Barclay
64. The Gotham Hotel

## GYM

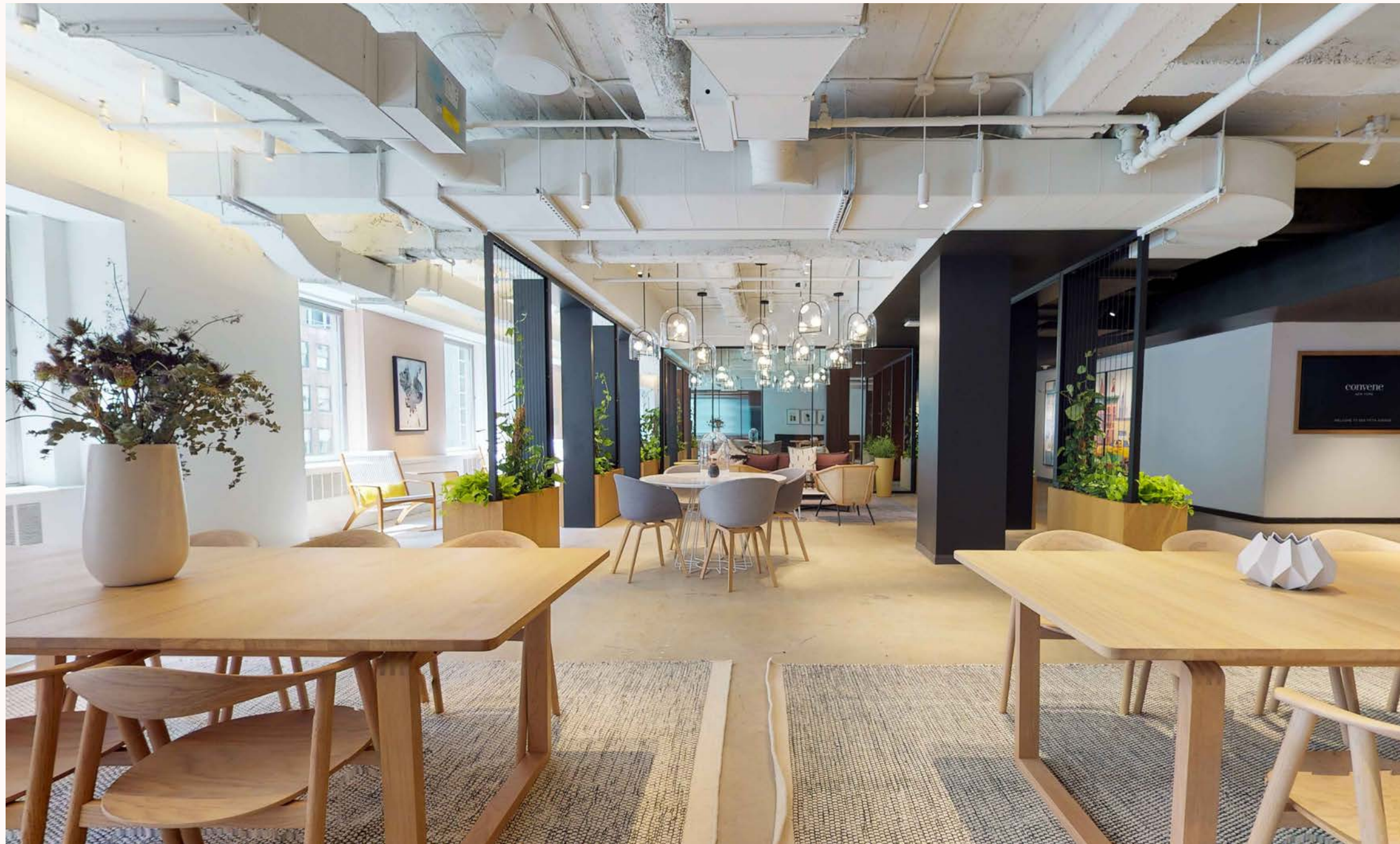
65. Equinox
66. Crunch Fitness
67. FORM50 Fitness
68. Orangetheory







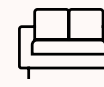







# 530 FIFTH

# ELEVATED AMENITIES



convene™

As a tenant of 530 Fifth, you are eligible for a Corporate Access account, which enables your employees to apply for a community membership. Tenants may also receive access to vertical catering, conferencing, and event space booking.

- |  |  |   |  |   |  |  |   |  |   |
|--|--|---|--|---|--|--|---|--|---|
| <br>HIGH-SPEED<br>WI-FI | <br>COMPLIMENTARY<br>MEETING SPACES | <br>SPACE + DESIGN | <br>CALENDAR<br>OF EVENTS | <br>UNLIMITED ON-SITE<br>DRINKS + SNACKS | <br>GUEST<br>ACCESS | <br>REJUVENATING<br>AMENITIES | <br>OUTDOOR<br>TERRACE | <br>GOURMET<br>CATERING | <br>CONFERENCE<br>ROOMS<br>+ EVENT SPACE |
|--|--|---|--|---|--|--|---|--|---|



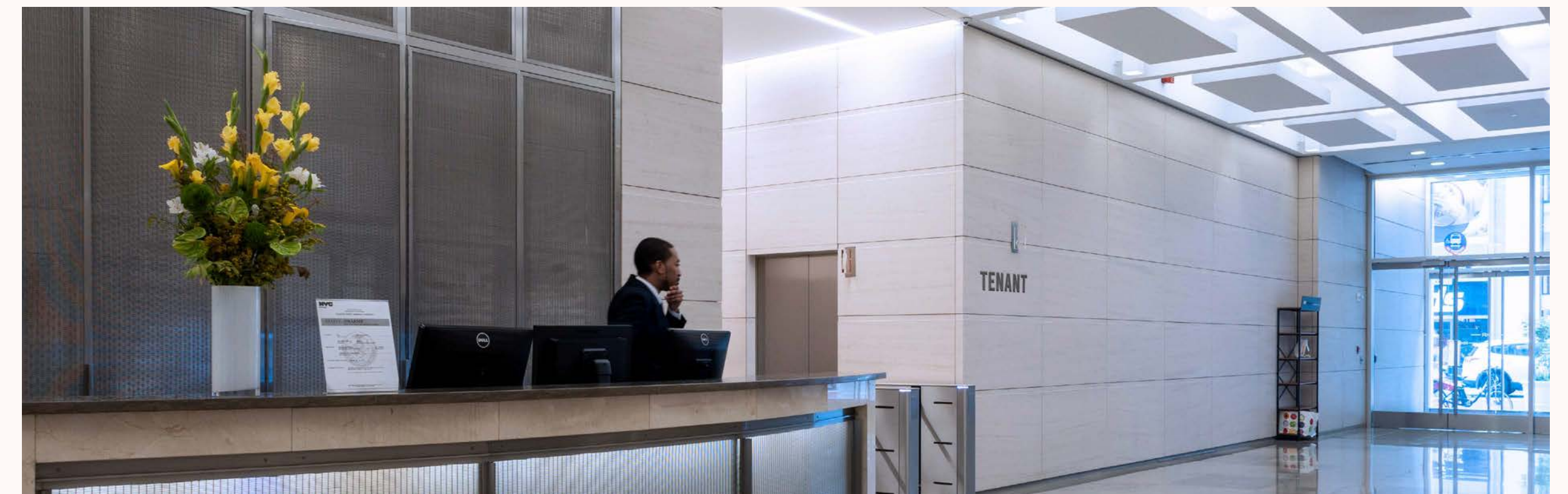
# 530 FIFTH

# BRAND

# VISIBILITY



ELEVATE YOUR PRESENCE



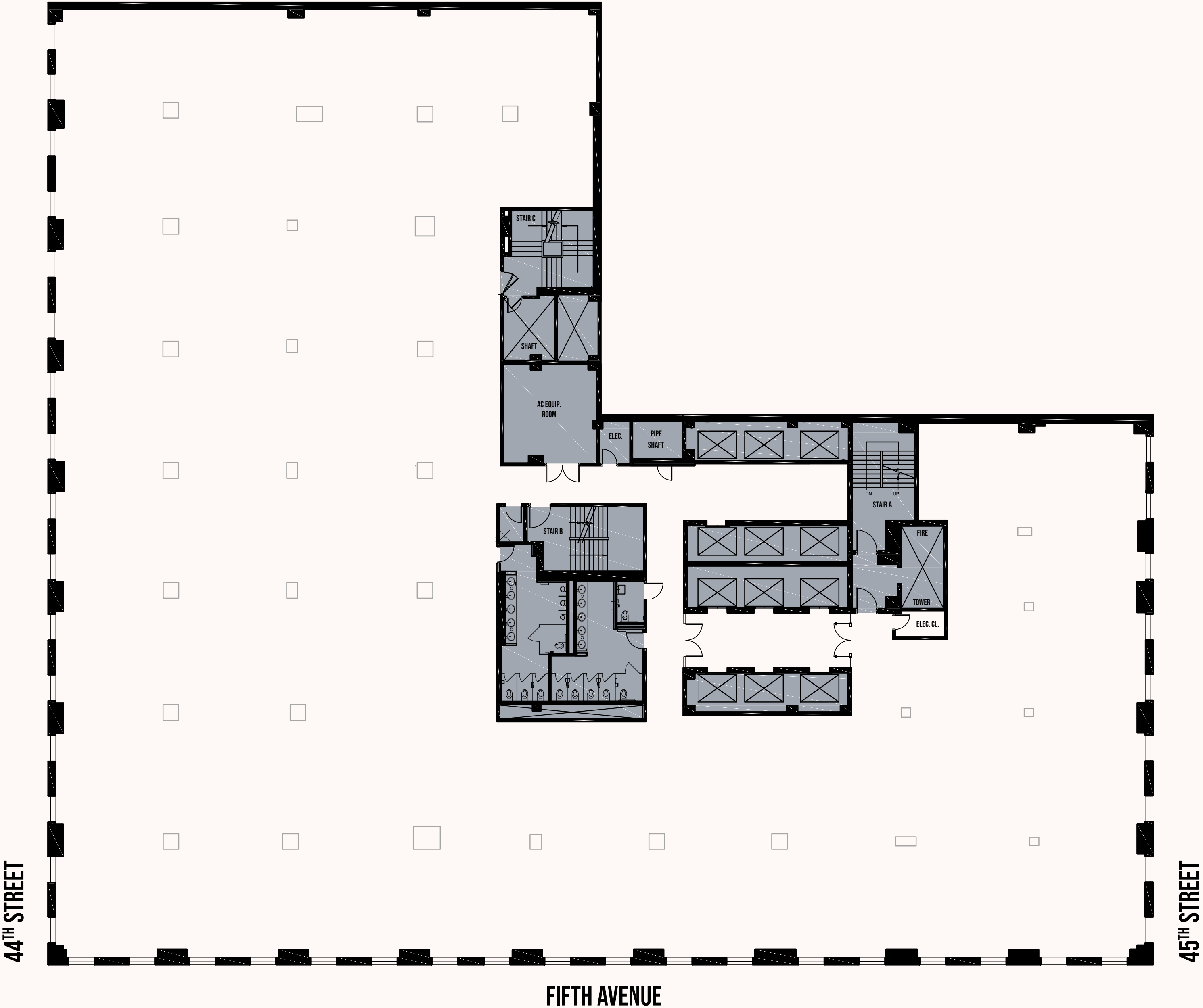
PREMIUM SIGNAGE OPPORTUNITIES



530 FIFTH

ENTIRE  
5<sup>TH</sup> FLOOR  
34,479 RSF

CORE + SHELL



[CLICK TO VIEW AVAILABILITIES](#)

\*FLOOR PLAN CAN BE DIVISIBLE



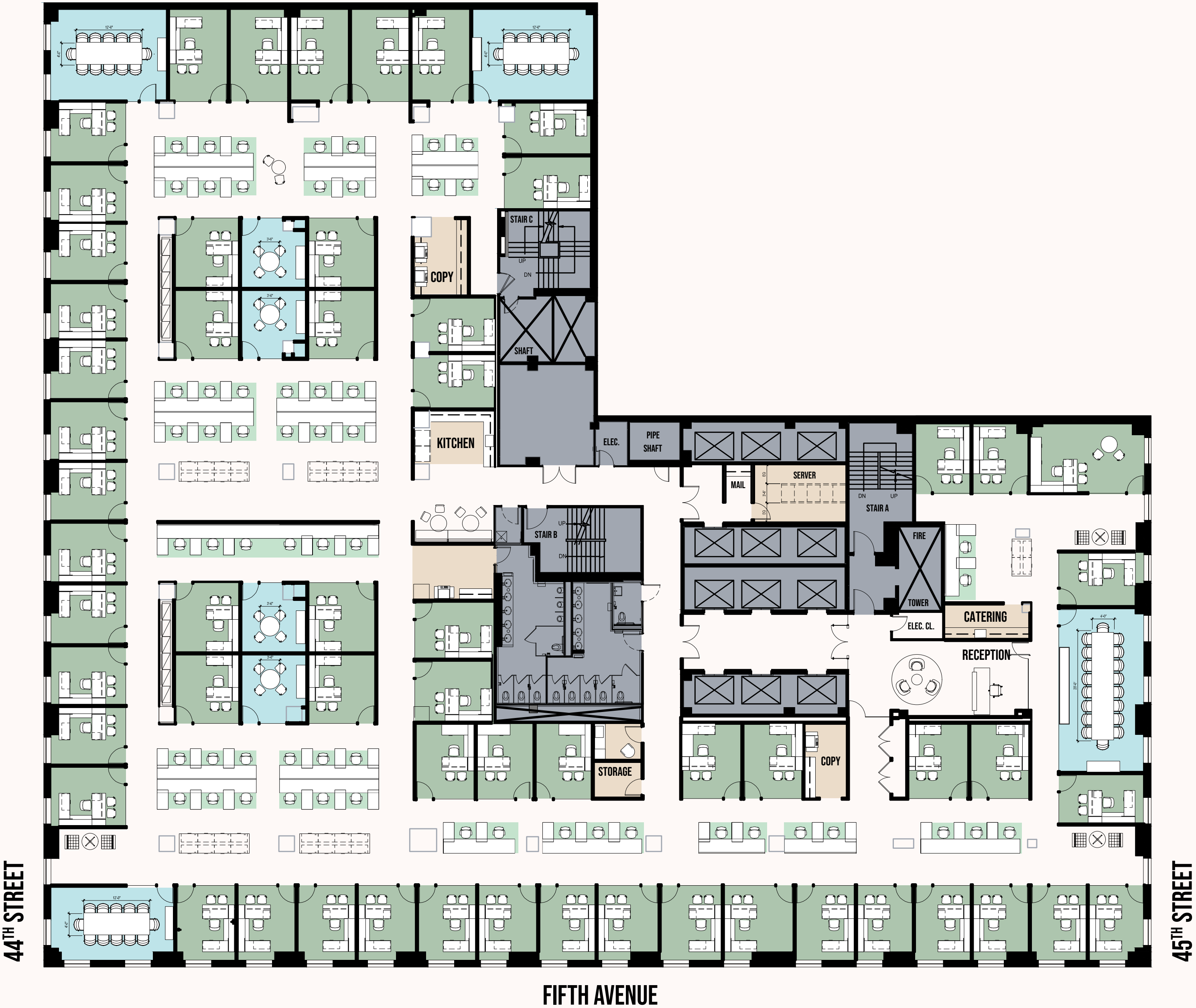
530 FIFTH

ENTIRE

5<sup>TH</sup> FLOOR

34,479 RSF

AS-BUILT



CLICK TO VIEW AVAILABILITIES

\*FLOOR PLAN CAN BE DIVISIBLE



# 530 FIFTH

ENTIRE  
6<sup>TH</sup> FLOOR  
34,479 RSF

CORE + SHELL



[CLICK TO VIEW AVAILABILITIES](#)

\*FLOOR PLAN CAN BE DIVISIBLE



530 FIFTH

ENTIRE  
6<sup>TH</sup> FLOOR  
34,479 RSF

WORKSTATIONS	122
PRIVATE OFFICES	22
CONFERENCE ROOMS	10
PANTRIES	2
WELLNESS ROOMS	1
SERVER ROOMS	1
PHONE BOOTHS	8
COAT/STORAGE	5
COPY STATIONS	3
TOTAL HEADCOUNT	145

CLICK TO VIEW AVAILABILITIES

OPEN TEST FIT



\*FLOOR PLAN CAN BE DIVISIBLE



# 530 FIFTH

## ENTIRE 6<sup>TH</sup> FLOOR 34,479 RSF

WORKSTATIONS	71
PRIVATE OFFICES	39
CONFERENCE ROOMS	15
PANTRIES	2
WELLNESS ROOMS	1
SERVER ROOMS	1
PHONE BOOTHS	5
COAT/STORAGE	3
COPY STATIONS	3
TOTAL HEADCOUNT	111

CLICK TO VIEW AVAILABILITIES

### OFFICE INTENSIVE TEST FIT



\*FLOOR PLAN CAN BE DIVISIBLE

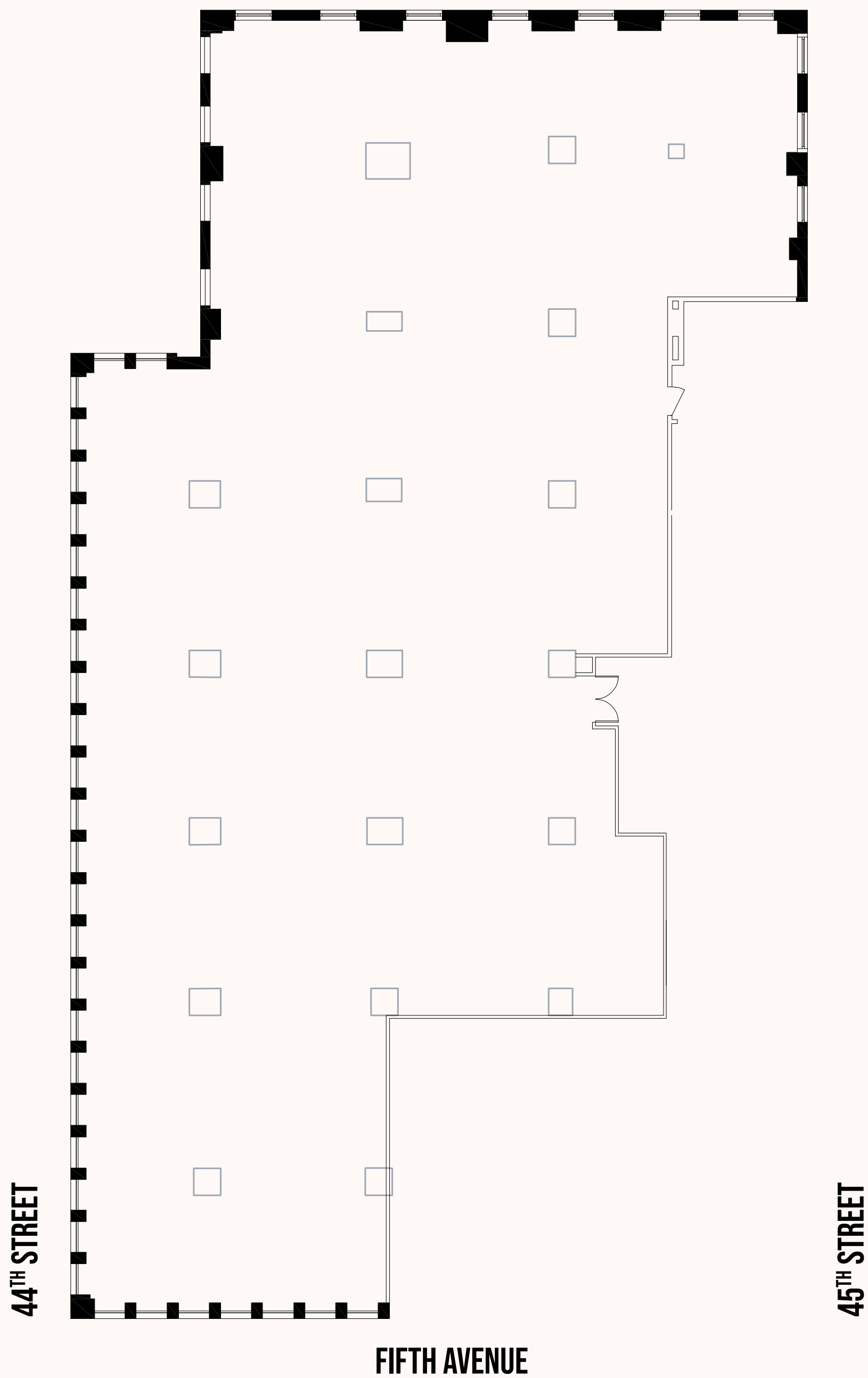


# 530 FIFTH

PARTIAL  
11<sup>TH</sup> FLOOR  
17,464 RSF

CORE + SHELL

CLICK TO VIEW AVAILABILITIES





530 FIFTH

PARTIAL  
11<sup>TH</sup> FLOOR  
17,464 RSF

WORKSTATIONS	75
PRIVATE OFFICES	17
CONFERENCE ROOMS	5
PANTRY	1
WELLNESS ROOMS	1
PHONE BOOTHS	2
COAT/STORAGE	2
COPY STATIONS	1
TOTAL HEADCOUNT	93

CLICK TO VIEW AVAILABILITIES

TEST FIT

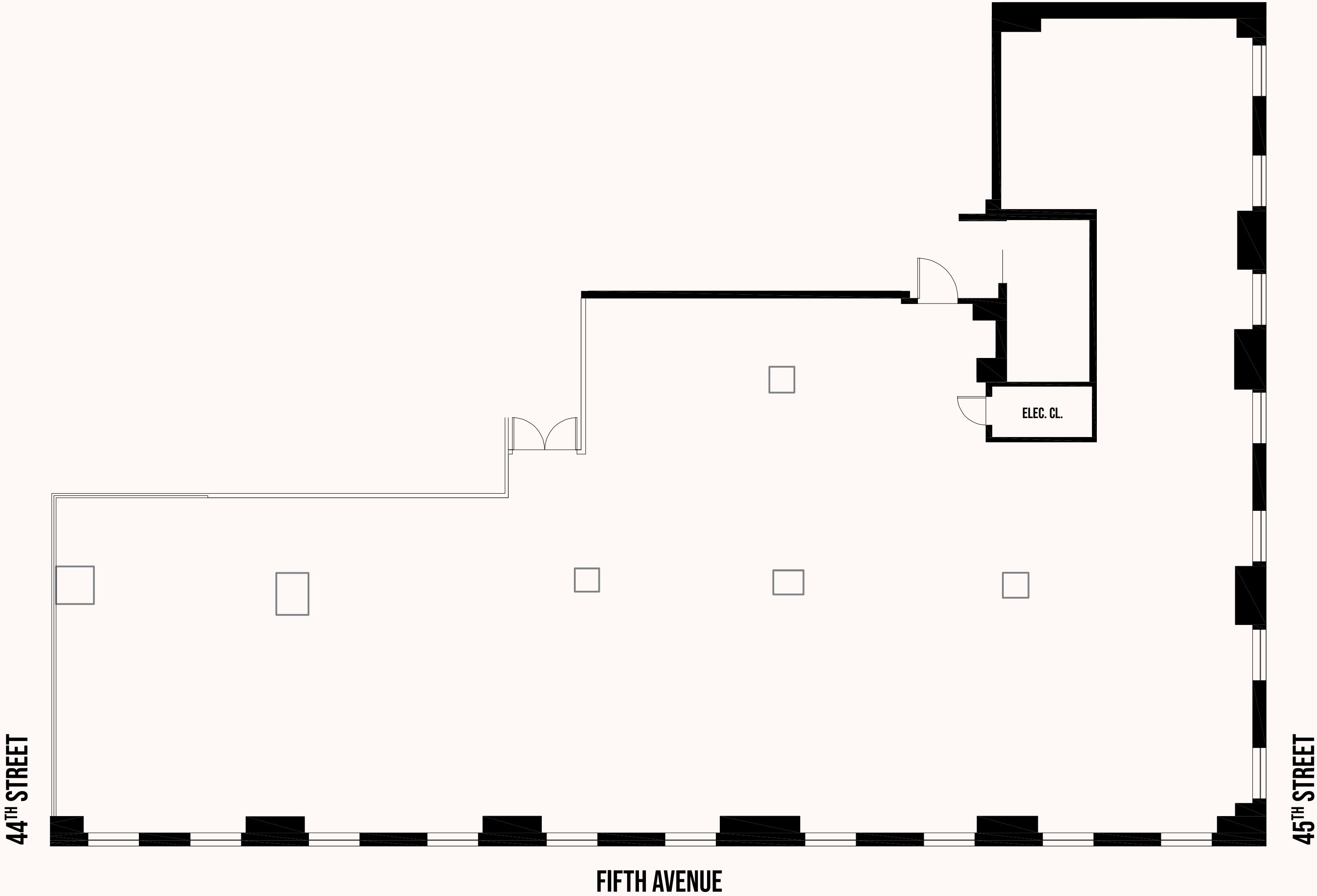




530 FIFTH

CORE + SHELL

PARTIAL  
14<sup>TH</sup> FLOOR  
8,221 RSF



CLICK TO VIEW AVAILABILITIES

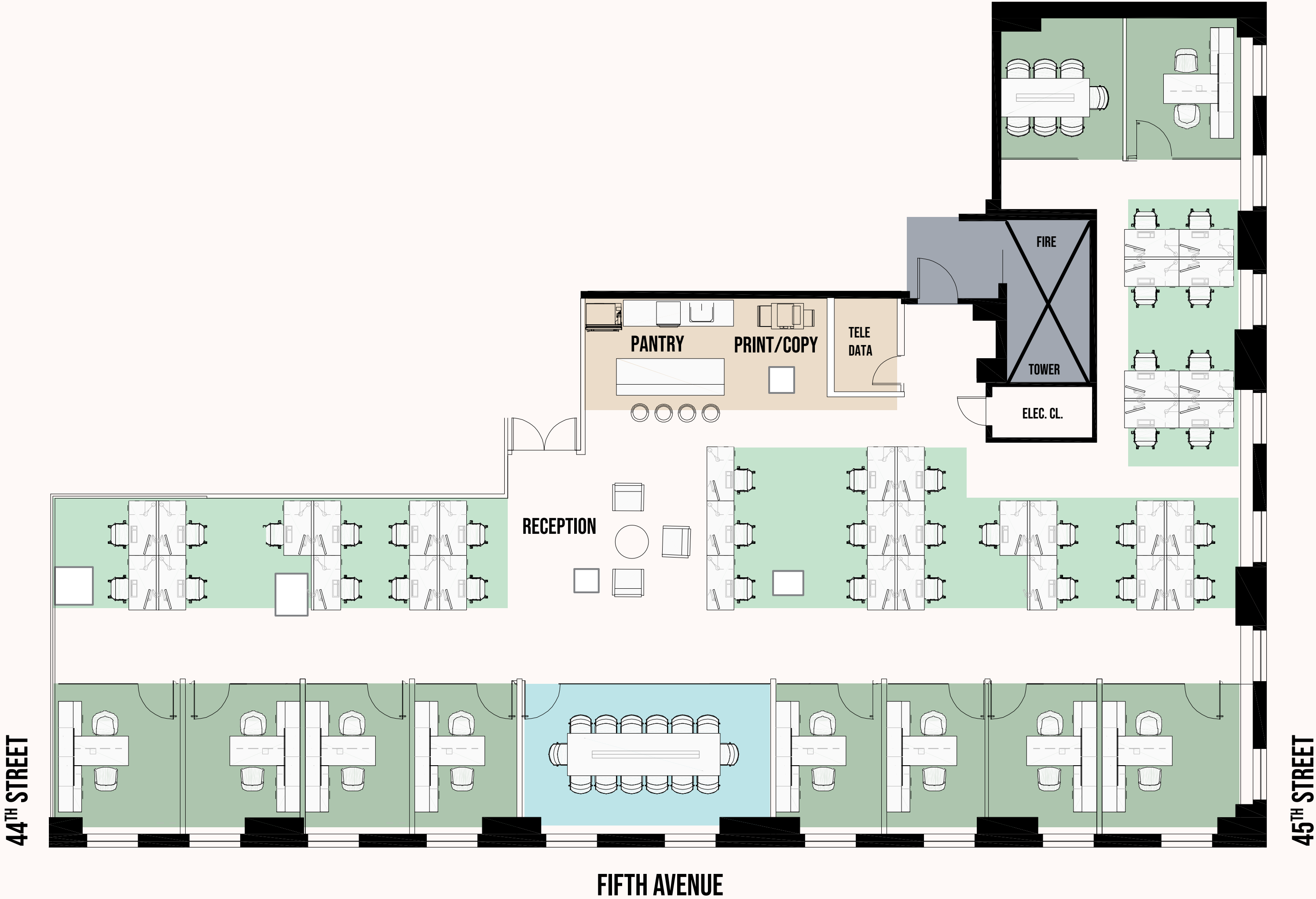


530 FIFTH

TEST FIT

PARTIAL  
14<sup>TH</sup> FLOOR  
8,221 RSF

WORKSTATIONS	35
PRIVATE OFFICES	9
CONFERENCE ROOMS	2
PANTRY	1
SERVER ROOMS	1
STORAGE	1
COPY STATIONS	1
TOTAL HEADCOUNT	44



CLICK TO VIEW AVAILABILITIES



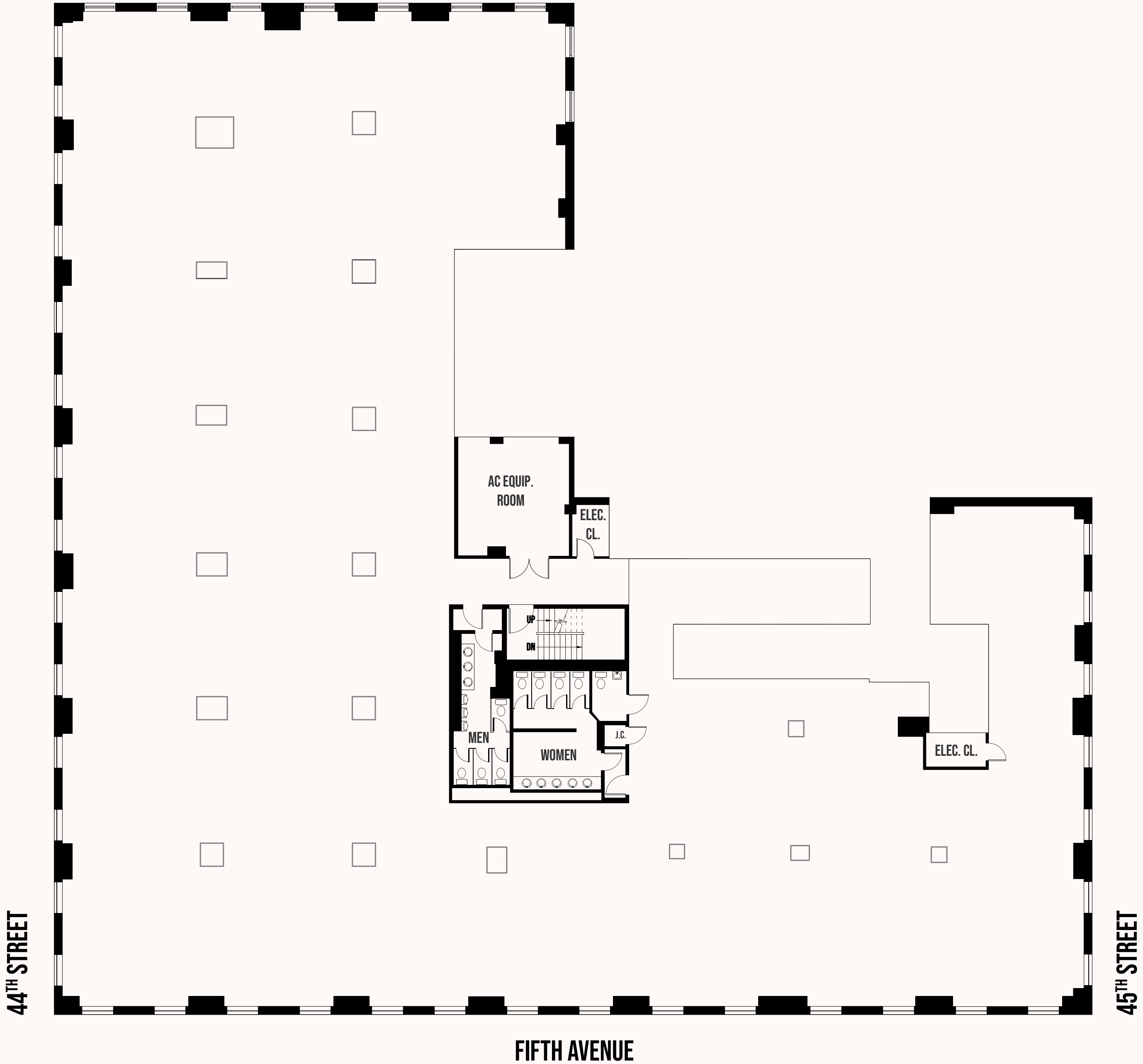
530 FIFTH

ENTIRE

15<sup>TH</sup> FLOOR

22,713 RSF

CORE + SHELL



CLICK TO VIEW AVAILABILITIES

\*FLOOR PLAN CAN BE DIVISIBLE



530 FIFTH

ENTIRE  
15<sup>TH</sup> FLOOR  
22,713 RSF

WORKSTATIONS	119
PRIVATE OFFICES	12
CONFERENCE ROOMS	6
COPY STATIONS	2
PANTRY	1
IT/STORAGE	5
TOTAL HEADCOUNT	132

CLICK TO VIEW AVAILABILITIES

TEST FIT



\*FLOOR PLAN CAN BE DIVISIBLE



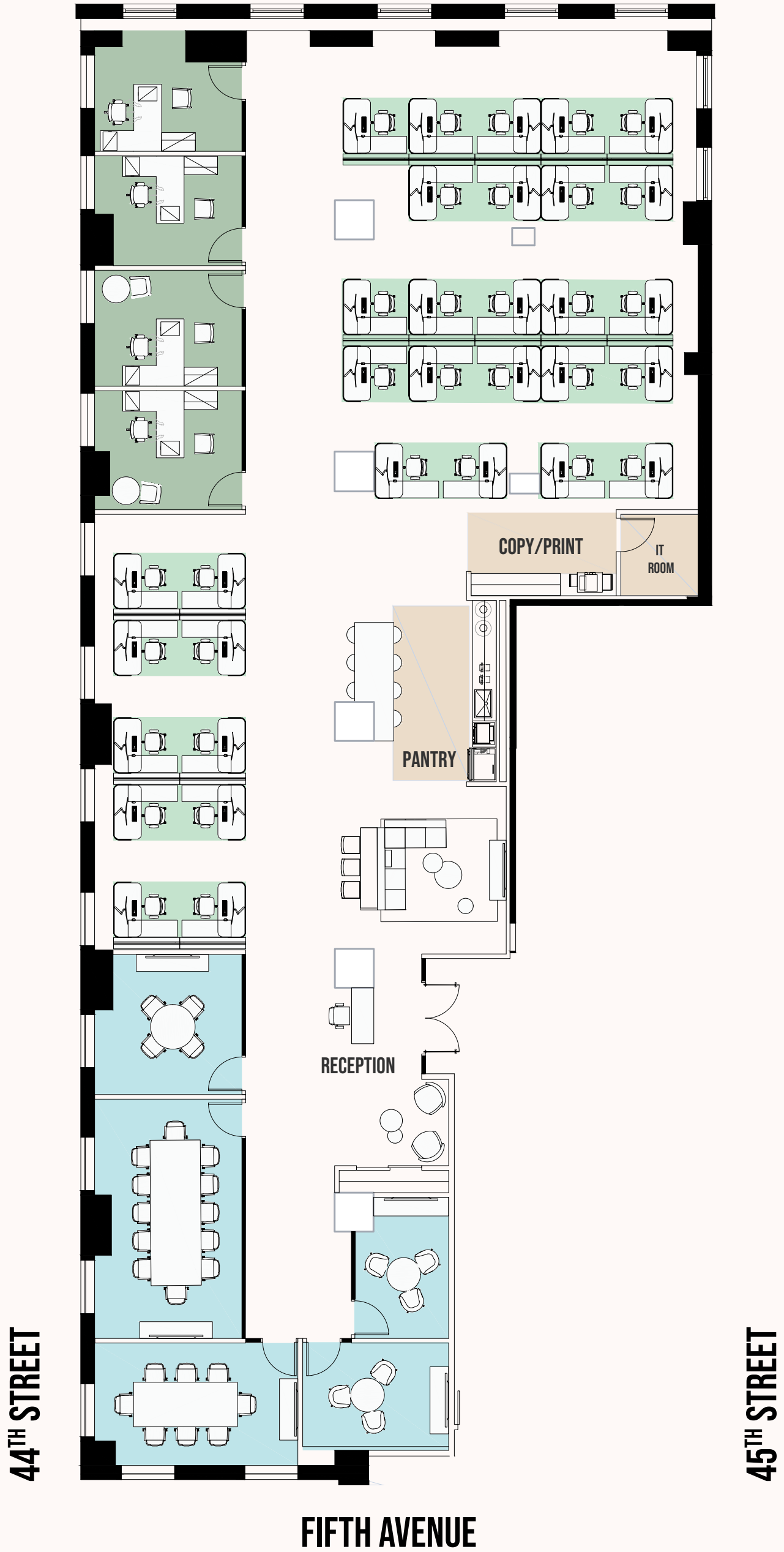
# 530 FIFTH

## PARTIAL 17<sup>TH</sup> FLOOR 9,527 RSF

WORKSTATIONS	33
PRIVATE OFFICES	4
CONFERENCE ROOMS	5
COPY STATIONS	1
PANTRY	1
CAFE	1
IT/STORAGE	1
TOTAL HEADCOUNT	38

CLICK TO VIEW AVAILABILITIES

PRE-BUILT





530 FIFTH

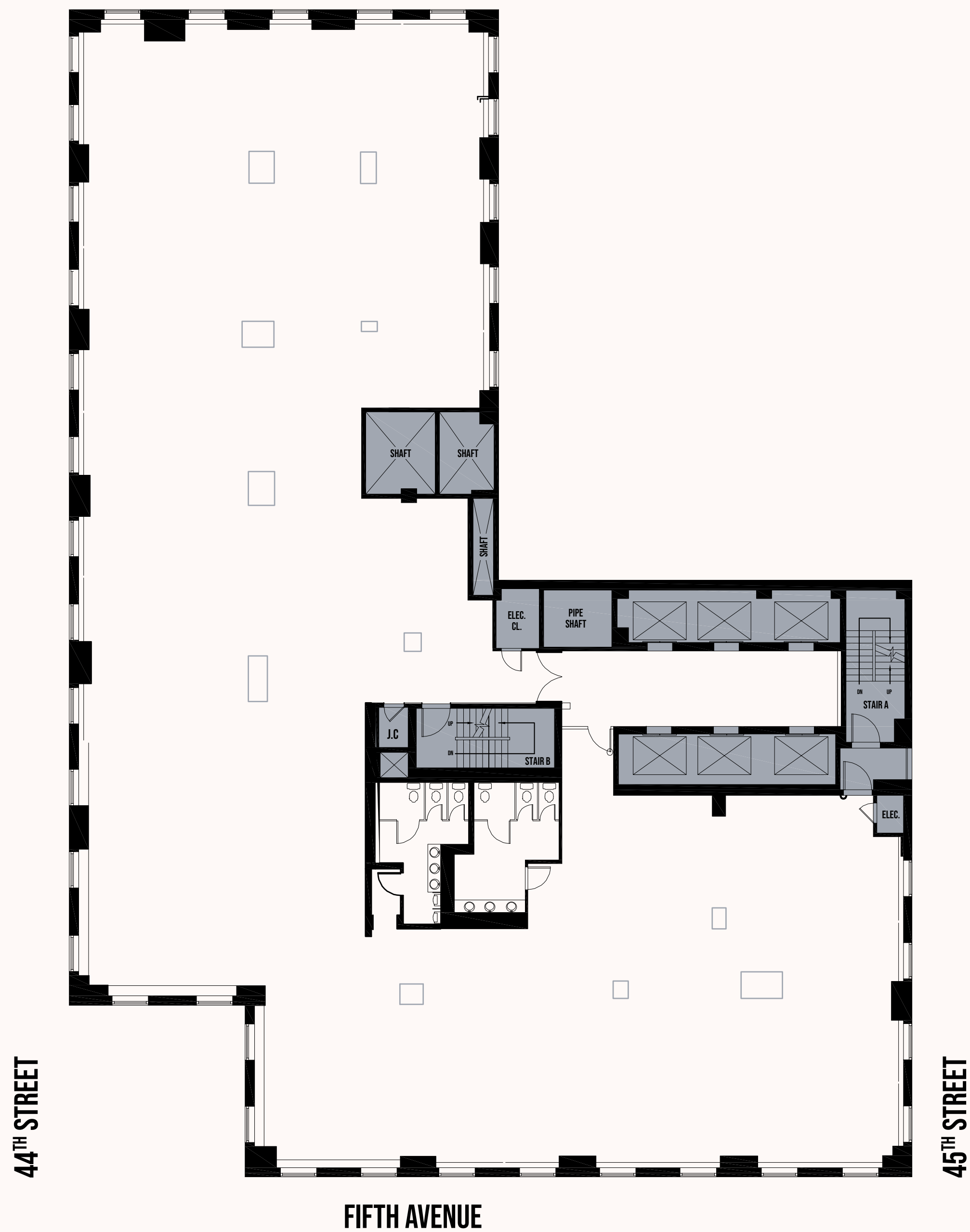
ENTIRE

18<sup>TH</sup> FLOOR

15,074 RSF

CORE + SHELL

CLICK TO VIEW AVAILABILITIES



\*FLOOR PLAN CAN BE DIVISIBLE



530 FIFTH

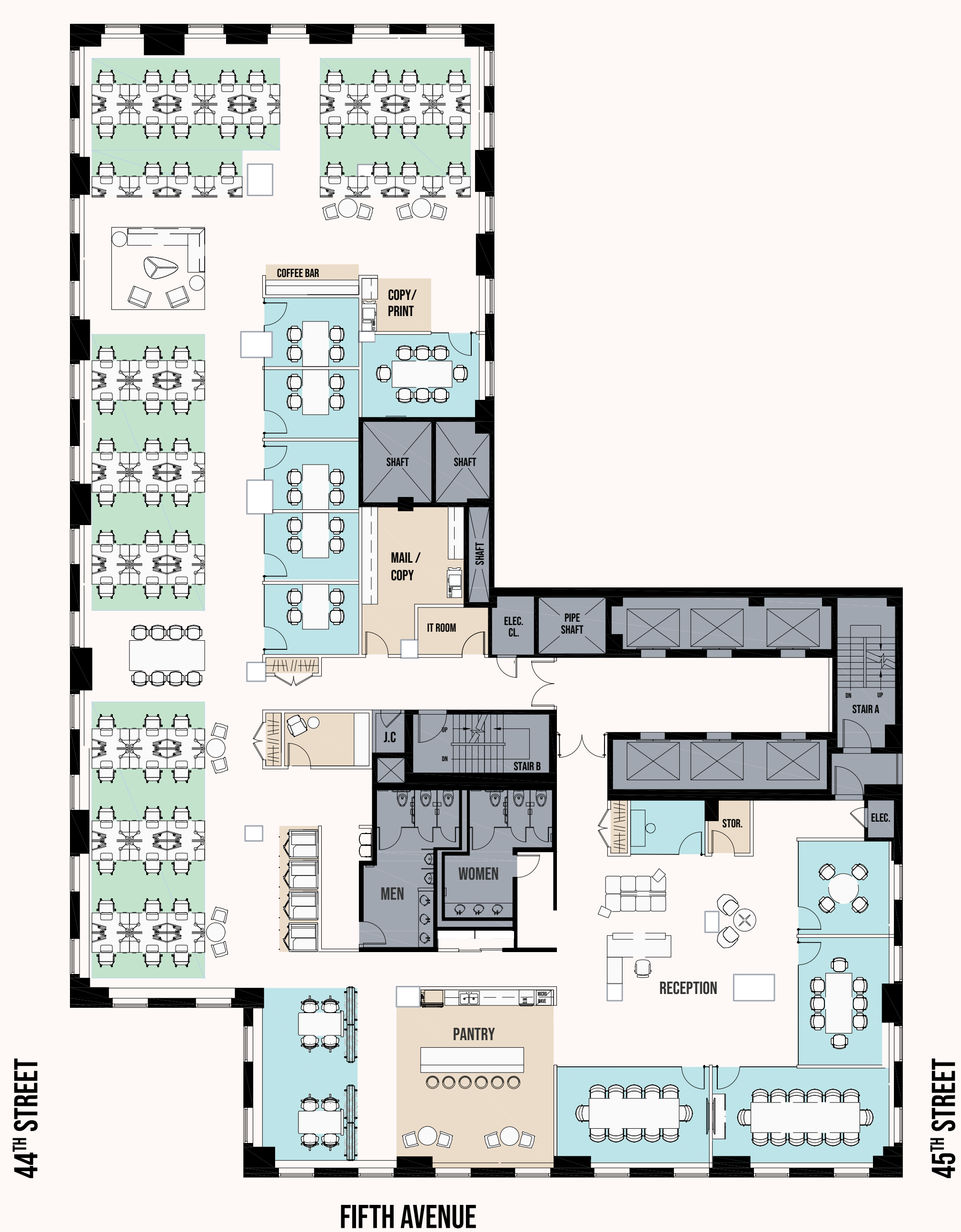
ENTIRE

18<sup>TH</sup> FLOOR

15,074 RSF

WORKSTATIONS	62
CONFERENCE ROOMS	10
PHONE BOOTHS	7
COPY STATIONS	1
PANTRY	1
IT/STORAGE	2
WELLNESS ROOMS	1
TOTAL HEADCOUNT	64

CLICK TO VIEW AVAILABILITIES



TEST FIT

\*FLOOR PLAN CAN BE DIVISIBLE



# 530 FIFTH

PARTIAL

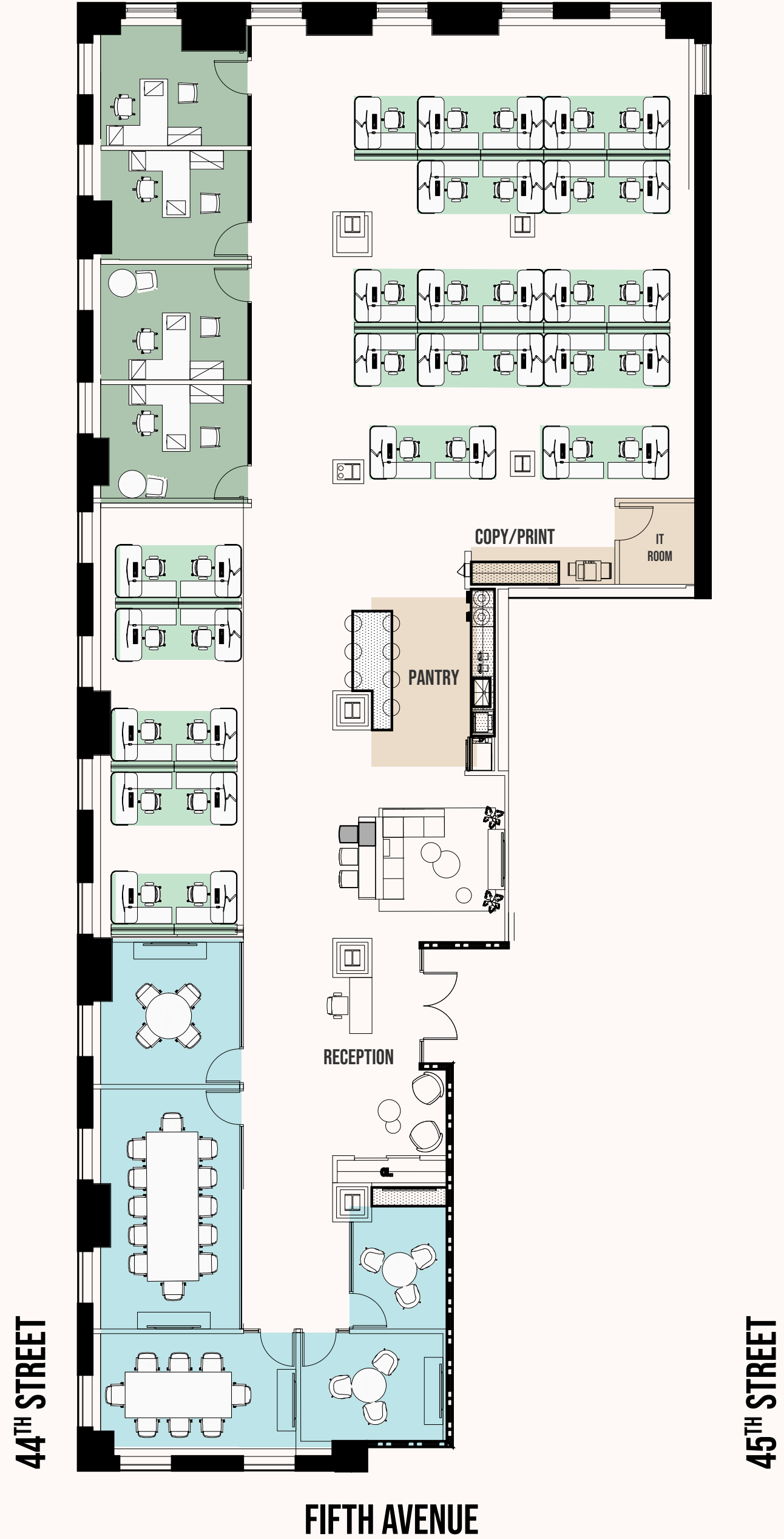
## 18<sup>TH</sup> FLOOR

### 9,620 RSF

WORKSTATIONS	33
PRIVATE OFFICES	6
CONFERENCE ROOMS	2
COPY STATIONS	1
PANTRY	1
IT/STORAGE	1
WELLNESS ROOMS	1
TOTAL HEADCOUNT	40

CLICK TO VIEW AVAILABILITIES

TEST FIT





# 530 FIFTH

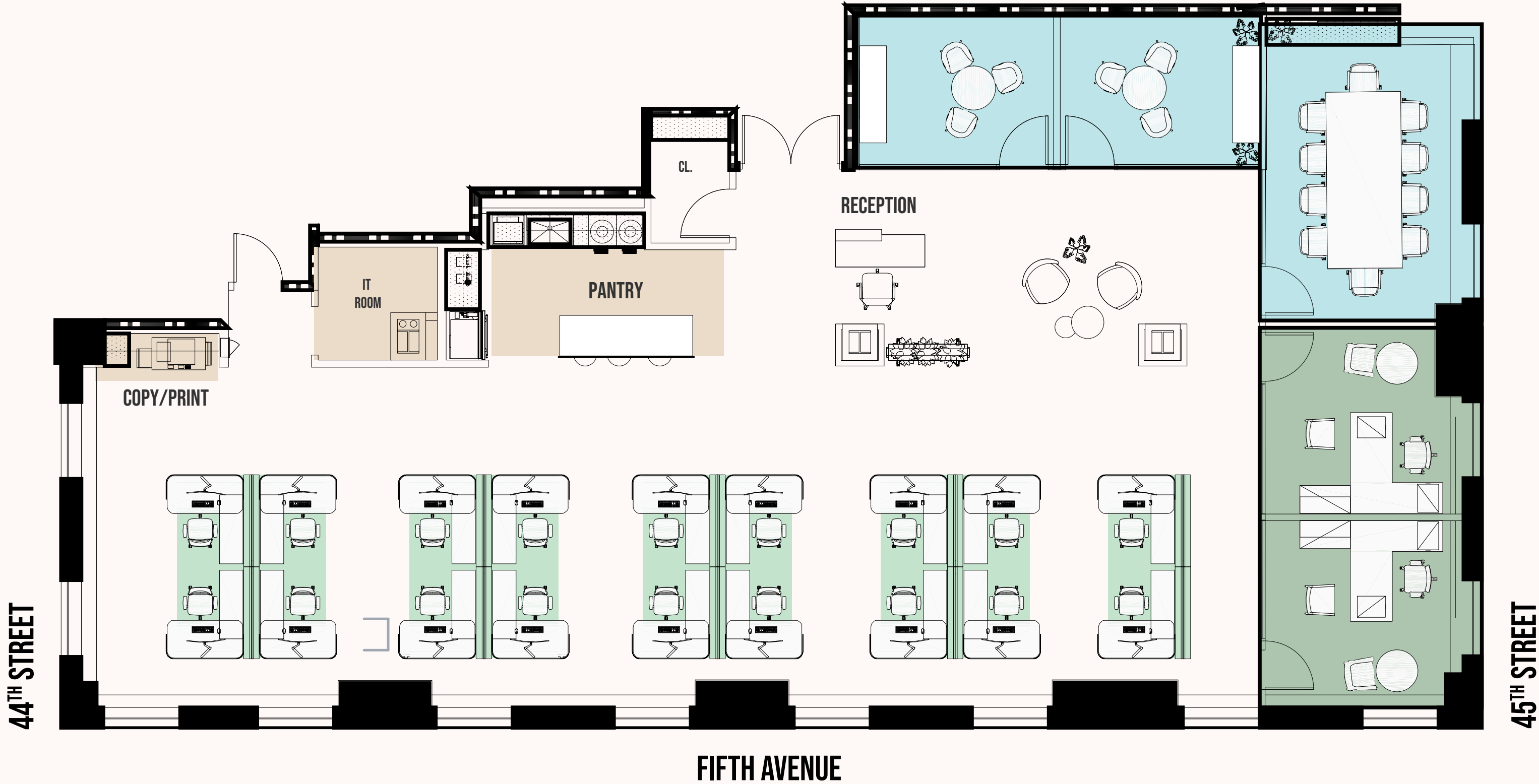
TEST FIT

PARTIAL

## 18<sup>TH</sup> FLOOR

### 5,424 RSF

WORKSTATIONS	18
PRIVATE OFFICES	5
CONFERENCE ROOMS	1
COPY STATIONS	1
PANTRY	1
IT/STORAGE	1
WELLNESS ROOMS	1
TOTAL HEADCOUNT	24



CLICK TO VIEW AVAILABILITIES

**RXR**

**ANDREW ACKERMAN**

aackerman@rxr.com

212.444.3821

**WALTER ROONEY**

wrooney@rxr.com

212.715.6122

**530FIFTHAVENUE.COM**

**CBRE**

**PAUL AMRICH**

paul.amrich@cbre.com

212.984.8122

**MEGHAN ALLEN**

meghan.allen@cbre.com

212.895.0972

**BROOKE DEWING**

brooke.dewing@cbre.com

212.984.8129

**530 FIFTH**