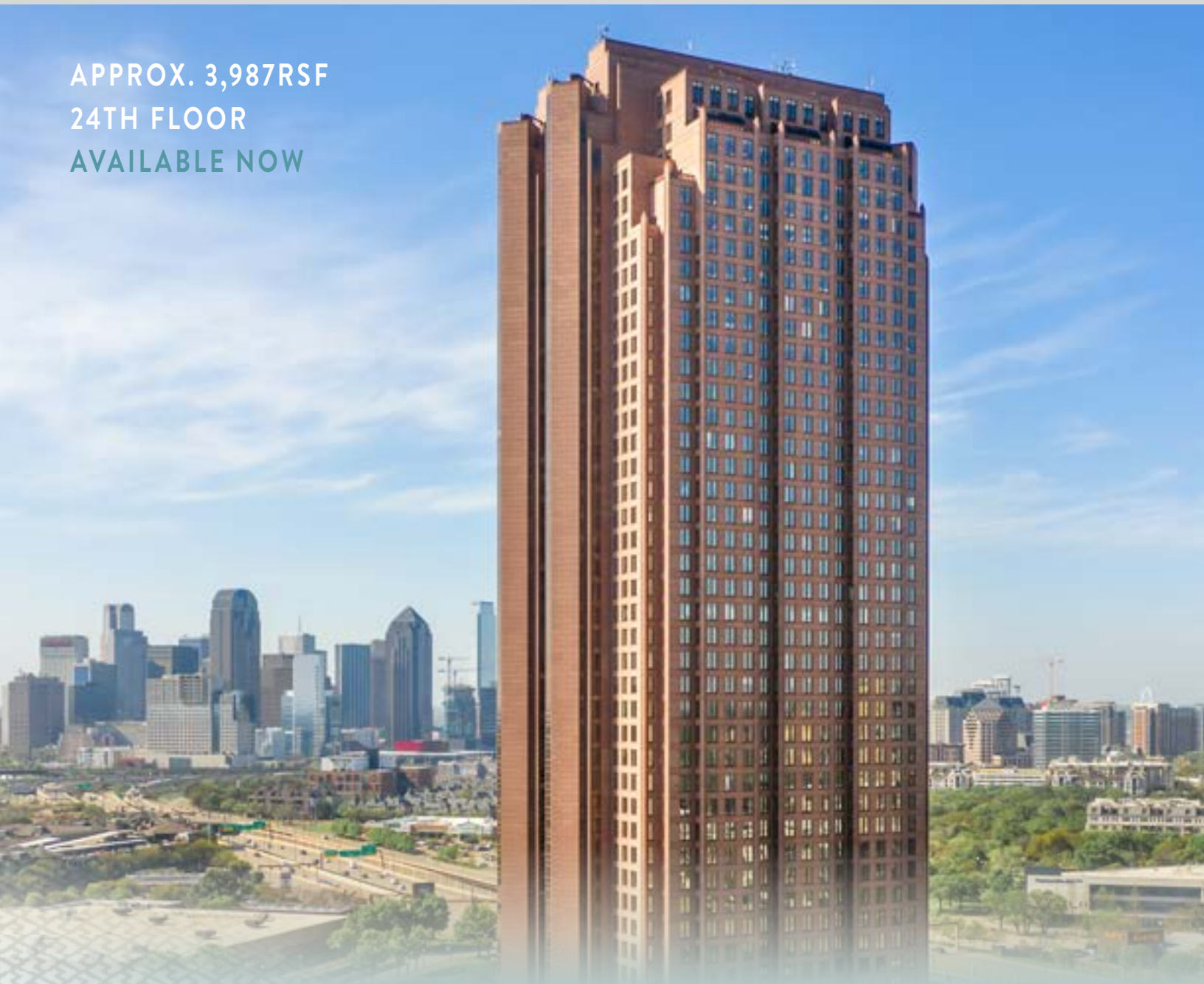


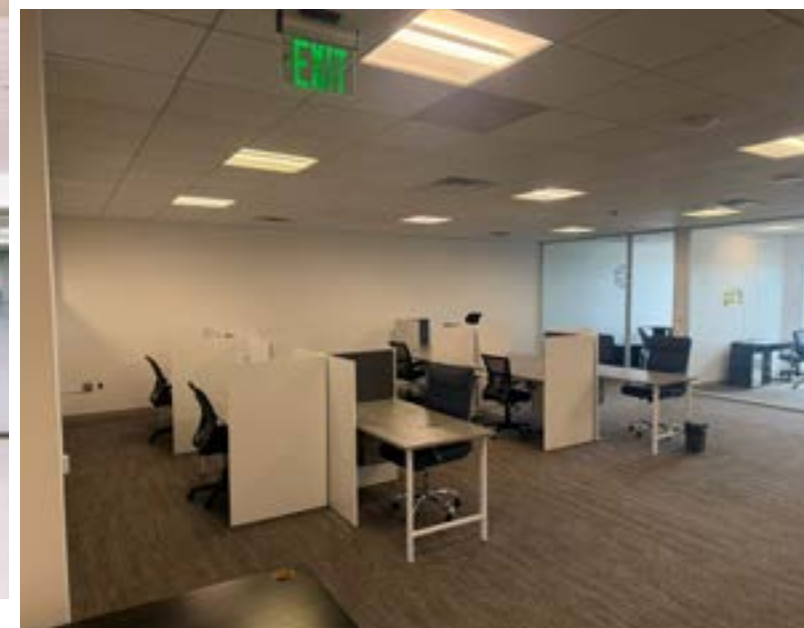
Furnished Sublease in Iconic Dallas Tower

CITYPLACE | 2711 NORTH HASKELL AVE, SUITE 2450 | DALLAS, TX

APPROX. 3,987RSF
24TH FLOOR
AVAILABLE NOW



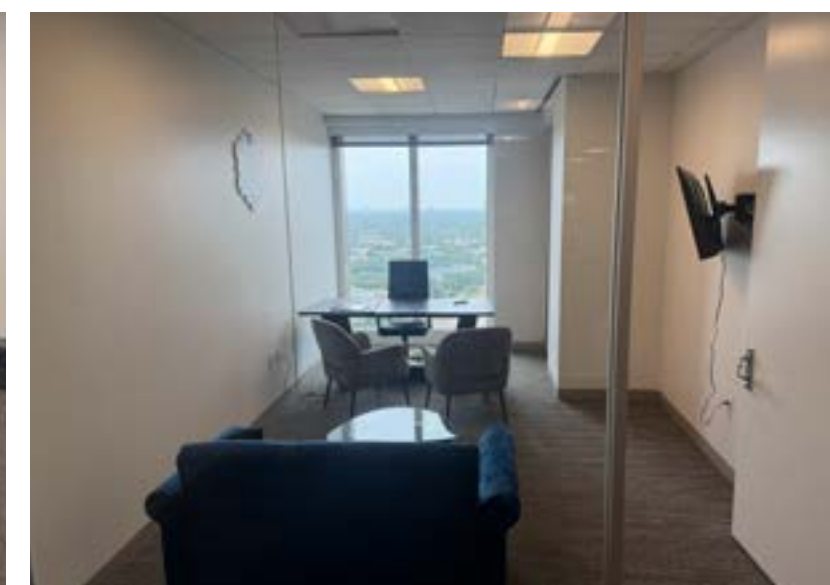
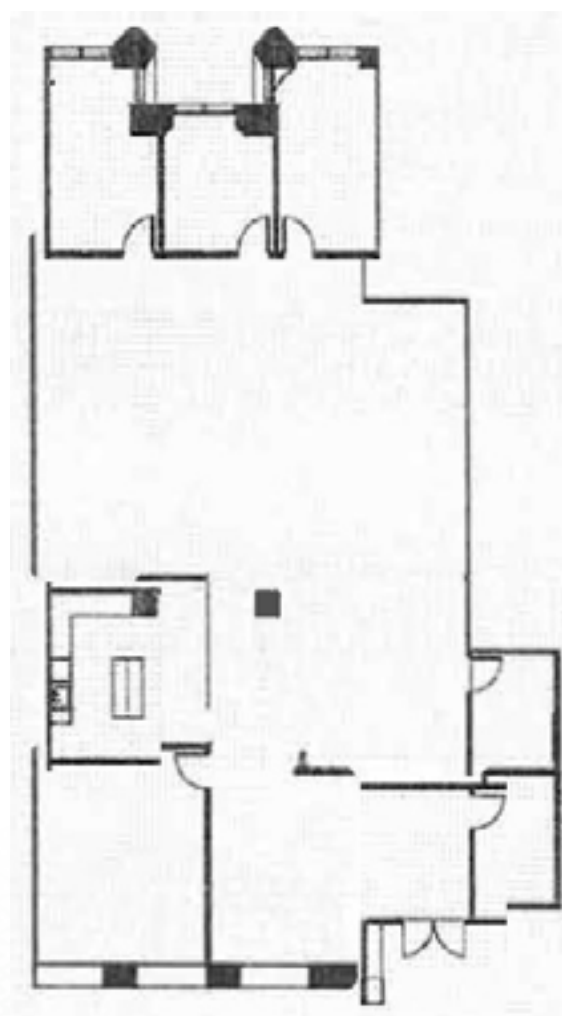
CBRE



FEATURES

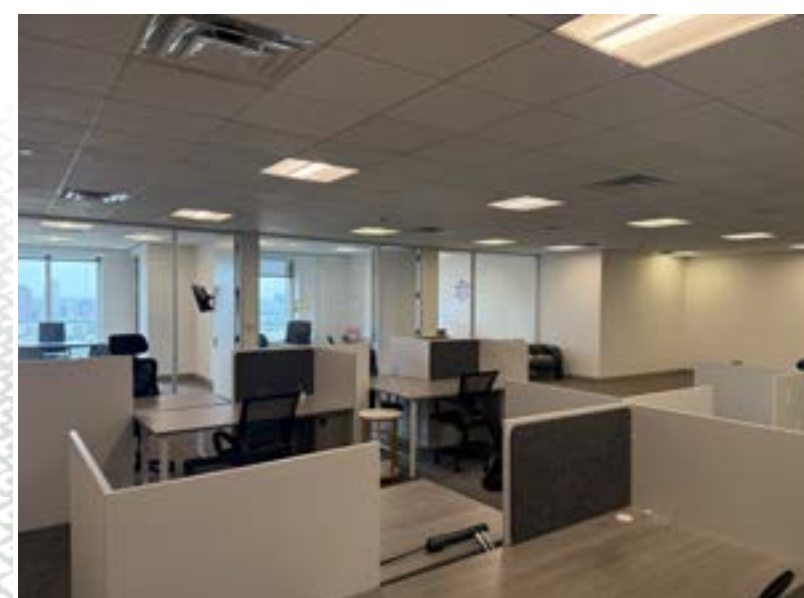
- Approximately 3,987 RSF
- Quoted Rental Rate: \$27.00 NNN (\$11.77) + E (\$ 1.89)
- Lease Expiration: 7/31/2030
- Parking Ratio: 3.0/1,000 RSF
- Conferencing and Event Facilities
- Direct Access to DART Light-Rail
- Card Key Access System and 24/7 Security
- On-Site Property Management by NexVest
- Uptown / North Central Expressway Location
- Excellent Connectivity and Popular Nearby Amenities — Access to West Village

FLOOR PLAN: SUITE 2450



SPACE PROGRAMMING

- 3 Main Offices and Workstations
- 2 Conference Rooms (Large Seats 8, Small Seats 4)
- Coffee Bar



CITYPLACE TOWER

Renovated Lobby, Common Areas, and Conferencing Facilities



Local Food Concepts & Coffee Bar



Dining & Lounge Area



Updated Concourse with Access to West Village & DART Light-Rail



Fitness Center with Locker Rooms



FOR MORE INFORMATION:

NOREEN MEHDI WEATHERS

First Vice President
+1 214 728 8434
noreen.mehdi@cbre.com

ROCK LINTON

Vice President
+1 214 673 5975
rock.linton@cbre.com

JACK GAMBLE

Associate - Intern
+1 214 775 2989
jack.gamble@cbre.com

CBRE