

# Deerfield Professional Center

720 Osterman | Deerfield

Your Practice, Our Priority

**NEW OWNERSHIP!  
BUILDING MODERNIZATION COMPLETE!**

**CBRE**

A dedicated medical office building.



720

# Property Overview

Welcome to Deerfield Professional Center, a premier healthcare destination in the heart of downtown Deerfield.



## REVAMPED

After a comprehensive renovation, our corridors, lighting, HVAC and restrooms have been transformed to provide a modern and comfortable experience for patients and visitors



## CAPITAL

Under new ownership, we are committed to delivering exceptional care and service.



## LOCATION

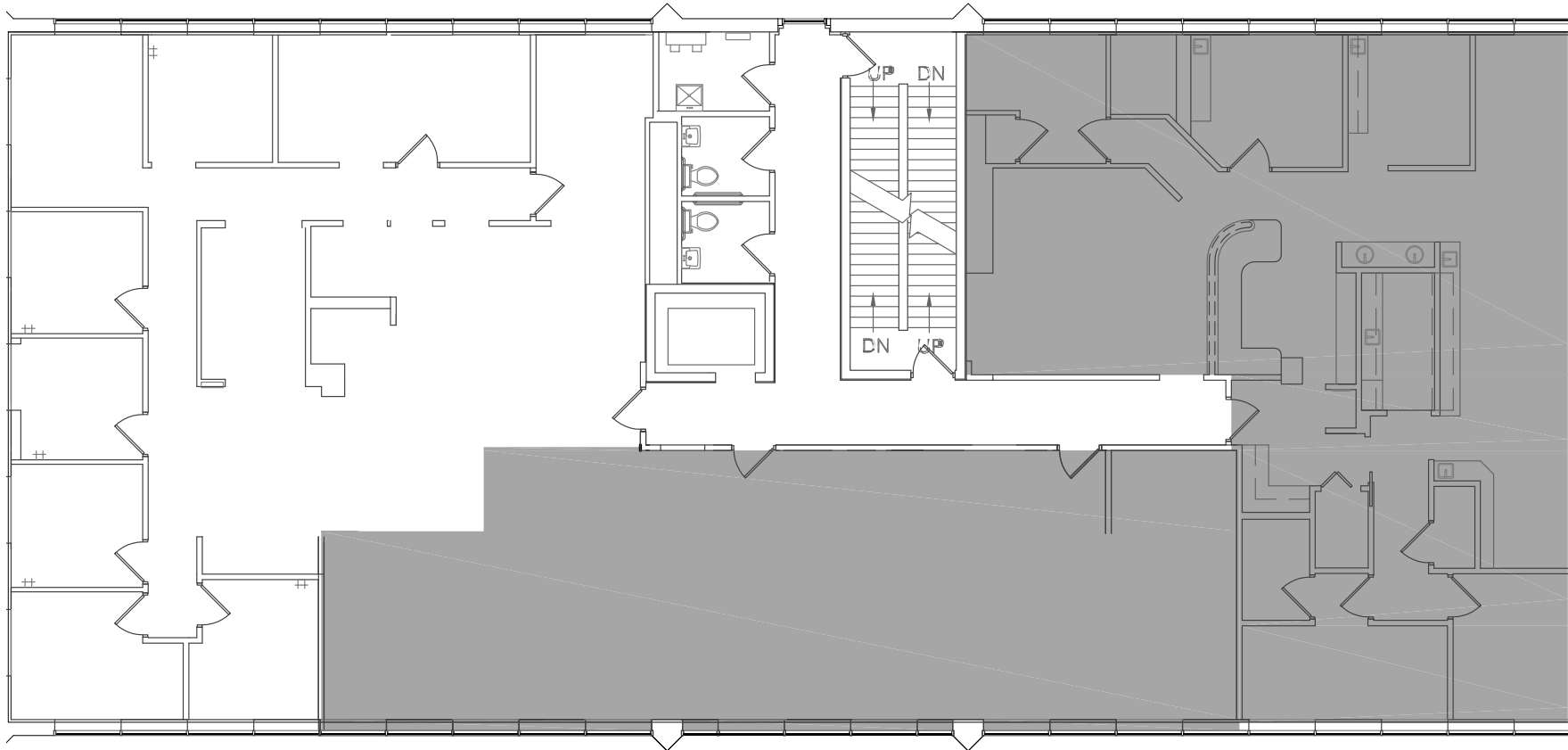
Conveniently located in the heart of downtown, our building offers easy access to parking, public transportation, and local amenities.



SUITE 205: 2,660 SF

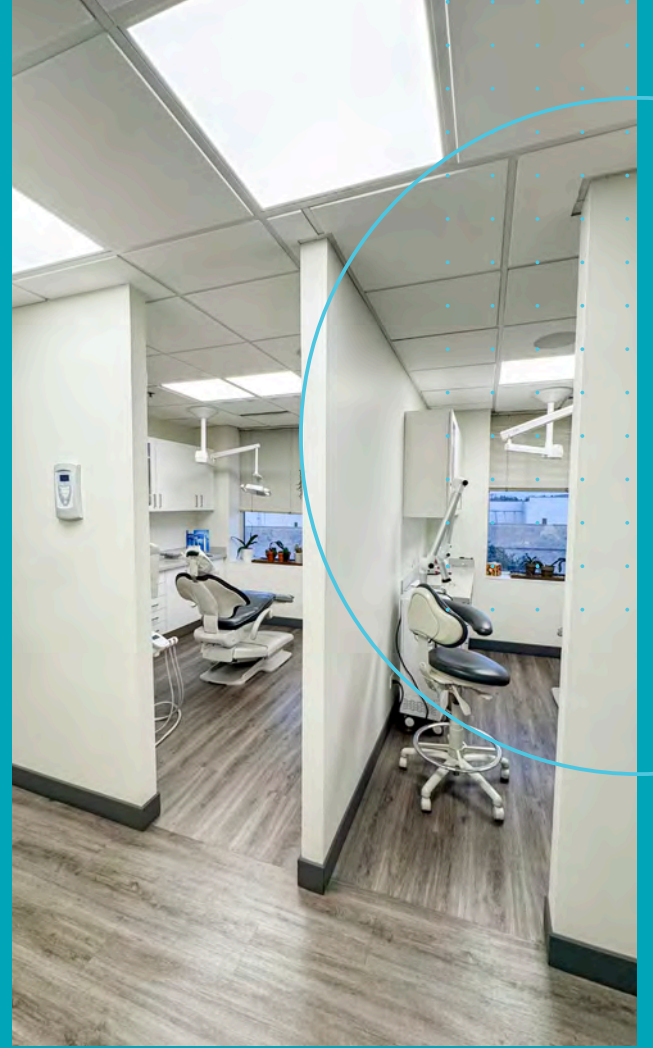
- Divisible to 1,000 SF

# Floor 2



# Amenity Map





# Deerfield Professional Center

720 Osterman Ave, Deerfield

720

- A dedicated medical office building

## Contacts

**Michael Graham**

**Talina Thornton**

+1 847 706 4033

+1 630 473 7843

michael.graham@cbre.com

talina.thornton@cbre.com

**CBRE**

© 2026 CBRE, Inc. All rights reserved. This information has been obtained from sources believed reliable but has not been verified for accuracy or completeness. CBRE, Inc. makes no guarantee, representation or warranty and accepts no responsibility or liability as to the accuracy, completeness, or reliability of the information contained herein. You should conduct a careful, independent investigation of the property and verify all information. Any reliance on this information is solely at your own risk. CBRE and the CBRE logo are service marks of CBRE, Inc. All other marks displayed on this document are the property of their respective owners, and the use of such marks does not imply any affiliation with or endorsement of CBRE. Photos herein are the property of their respective owners. Use of these images without the express written consent of the owner is prohibited.